



**Marathwada Shikshan Prasarak Mandal's**

## **Sunderrao Solanke Mahavidyalaya, Majalgaon**



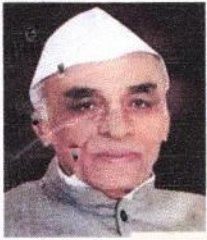
### **INTERNAL QUALITY ASSURANCE CELL**

#### **CRITERION-6: GOVERNANCE, LEADERSHIP AND MANAGEMENT**

##### **6.2 Strategy Development and Deployment**

6.2.1 The functioning of the institutional bodies is effective and efficient as visible from policies, administrative setup, appointment and service rules, procedures, deployment of institutional Strategic/ perspective/development Plan etc.

#### **Students Welfare Policy**



M.S.P.Mandal's

# SUNDERRAO SOLANKE MAHAVIDYALAYA

MAJALGAON, DIST.BEED (MH)-431131

NAAC Re-Accredited "A" Grade



## Student Welfare Policy

### INSTITUTIONAL SCHOLARSHIP, FREESHIP, CONCESSION & FINANCIAL SUPPORT

Welfare of students is at the core of vision and mission of the institution. The governance of the institution ensures every type of support to students on the campus.


The institution comprehensively plans and ensures academic and financial support to students requiring such support for educational purposes. Following are the areas wherein the support is extended to the students on the campus.

1. Curricular Aspects
2. Co-curricular Activities
3. Sports and Games
4. Student Research
5. Hostel Accommodation
6. Study Tours and Field Visits
7. Support to Physically Challenged Students
8. Earn and Learn
9. Poor economic conditions

Students are sensitized about the availability of concessions in fees and freeship in the above areas. The support mechanism to students is governed by the following principles.

- a) No student is denied of admission due to the inability of her/his inability of payment of required fees at the time of admission.
- b) State or National level rank holder in sport students avail the 650 Rs tuition fee concession during admission .
- c) Besides it, financial aids like fee waiver, partial payment, instalment in the total due fees are given.
- d) Needy and poor students are given concession in hostel fees.
- e) Sport persons are given financial support for participating competitions, preparations, purchase of required things, etc.
- f) Students participating competitions like Avishkar given financial support to prepare their projects and their travel expenses are borne by the college.
- g) Students are given opportunities to work and earn money at the campus under Earn and Learn Scheme.
- h) Financial support is provided to the students participating in cultural activities.
- i) Financial support is also provided to students participating in the competitions like elocution and debate in different colleges.

  
**Coordinator**  
Internal Quality Assurance Cell (IQAC)  
Sunderrao Solanke Mahavidyalaya,  
Majalgaon, Dist.Beed (MS)

  
**PRINCIPAL**  
Sunderrao Solanke Mahavidyalaya  
Majalgaon Dist. Beed (M.S.)