



Marathwada Shikshan Prasarak Mandal's

Sunderrao Solanke Mahavidyalaya, Majalgaon



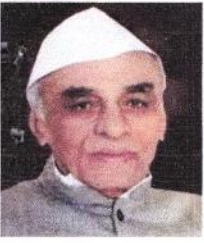
INTERNAL QUALITY ASSURANCE CELL

CRITERION-6: GOVERNANCE, LEADERSHIP AND MANAGEMENT

6.2 Strategy Development and Deployment

6.2.1 The functioning of the institutional bodies is effective and efficient as visible from policies, administrative setup, appointment and service rules, procedures, deployment of institutional Strategic/ perspective/development Plan etc.

Brochure for Divyangjan



M.S.P.Mandal's

SUNDERRAO SOLANKE MAHAVIDYALAYA

MAJALGAON, DIST.BEED (MH)-431131

NAAC Re-Accredited "A" Grade



BROCHURE FOR DIVYANGJAN

As per 'The Rights of Persons with Disabilities Act, 2016 the disability legislation passed by the Indian Parliament, Sunderrao Solanke Mahavidyalaya, Majalgaon has been quite sensitive towards needs and comfort of Divyangjans in college premises. It has strived hard to create Divyangian-friendly atmosphere in the campus. In order to put all Divyangjan students at ease, the following facilities are provided by the college:

1. Formation of the committee that secures rights of Divyangjans
2. Committee looks after Divyangian students are benefitted by governmental scholarships.
3. Human assistance is given to all Divyangjans.
4. Scribes are availed during examinations for Dvyangjans.
5. Ramps and signage have been placed at different places to give directions.
6. Separate parking facility is given.
7. Restroom facility has been created for Divyangjan
8. Divyangian-friendly toilet
9. Wheel chair assistance is made available
8. Different programme for Divyangjans
9. Special care is taken by student mentoring committee to resolve the problem.

Coordinator

Internal Quality Assurance Cell (IQAC)
Sunderrao Solanke Mahavidyalaya,
Majalgaon, Dist. Beed (MS)

PRINCIPAL

Sunderrao Solanke Mahavidyalaya
Majalgaon Dist. Beed (M.S.)