



Marathwada Shikshan Prasarak Mandal's

Sunderrao Solanke Mahavidyalaya, Majalgaon



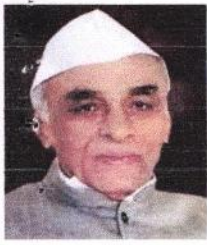
INTERNAL QUALITY ASSURANCE CELL

CRITERION-6: GOVERNANCE, LEADERSHIP AND MANAGEMENT

6.2 Strategy Development and Deployment

6.2.1 The functioning of the institutional bodies is effective and efficient as visible from policies, administrative setup, appointment and service rules, procedures, deployment of institutional Strategic/ perspective/development Plan etc.

Anti-Plagiarism Policy



M.S.P.Mandal's

SUNDERRAO SOLANKE MAHAVIDYALAYA

MAJALGAON, DIST.BEED (MH)-431131

NAAC Re-Accredited "A" Grade



Anti-Plagiarism Policy

Index

Sr. No.	Particulars	Details No.
1.	Vision of Sunderrao Solanke Mahavidyalaya, Majalgaon	I
2.	Mission of Sunderrao Solanke Mahavidyalaya, Majalgaon	II
3.	Introduction	III
4.	Definition	IV
5.	Scope	V
6.	Prevention and Control	VI
7.	Obligation	VII
8.	Report and Handling	VIII
9.	Constitution of Committee	IX



M.S.P.Mandal's
SUNDERRAO SOLANKE MAHAVIDYALAYA
MAJALGAON, DIST.BEED (MH)-431131
NAAC Re-Accredited "A" Grade
Anti-Plagiarism Policy



I. THE VISION

- Eliminating the darkness of ignorance from the lives of people living in age-long poverty and helping them to proceed towards knowledge to achieve all-round development

II. THE MISSION

- Providing quality education to socially and economically backward classes
- Bringing out educational and cultural development of rural population
- Providing standard facilities of hostel accommodation, physical education and value education
- Bringing out social transformation through education
- Creating resources and utilizing them for educational upliftment of common people
- Promoting intellectual, ethical and cultural development of society
- Imparting technical and professional education to increase employability and economic development
- Creating a wide-spread educational network seeking mass participation in education



M.S.P.Mandal's
SUNDERRAO SOLANKE MAHAVIDYALAYA

MAJALGAON, DIST.BEED (MH)-431131

NAAC Re-Accredited "A" Grade

Anti-Plagiarism Policy



III. INTRODUCTION

Plagiarism is an act of academic dishonesty committed by students or faculties and is widely recognized as a serious issue amongst institutions all over the world. To keep plagiarism in check, each institution should have a plagiarism policy which deals with acts similar to academic dishonesty and educates the students and the faculties regarding the ill effects of this act.

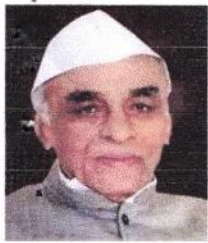
Sunderrao Solanke Mahavidyalaya, Majalgaon is committed to high standards of academic excellence and ethical conduct. The institution has zero tolerance to any sort of scientific misconduct owing to data fabrication, falsification or plagiarism applicable to all students and teaching faculty of the college.

IV. DEFINITION

The dictionary defines plagiarism as an act or instance of using or closely imitating the language and thoughts of another author without authorization and the representation of that author's work as one's own, as by not crediting the original author.

V. SCOPE

- Any academic activity viz, publications, research work, dissertations, case reports can be subject to plagiarism. Examples of plagiarism include the following
 - Copying another writer's work with no attempt to acknowledge that the material was found in an external source.
 - Copying material from several writers & rearranging with citation.
 - Incorporating another writer's words or phrases within a larger paraphrase, without quotation marks or citation.
 - Changing the words of an original source, but using the ideas without citing.
 - Self Plagiarism: reproducing or publishing one's own published work, in a part or whole, without referring to the earlier published work.



M.S.P.Mandal's
SUNDERRAO SOLANKE MAHAVIDYALAYA

MAJALGAON, DIST.BEED (MH)-431131

NAAC Re-Accredited "A" Grade



Anti-Plagiarism Policy

VI. PREVENTION AND CONTROL

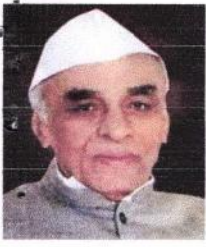
- **Cite the source:** When taking the idea from a source, add a citation to your writing mentioning the full name of source, the year the source was published in and any other necessary citation element.
- **Add quotations:** Add quotations around the text that is taken from a source
- **Paraphrase:** Paraphrasing involves using a source's work but putting it in one's own language. It should be done carefully. Since it involves using someone else's work, citations should be used.
- **Present your own idea:** Teachers are both encouraged and instructed to make use of their own innovative ideas in their research making the research the most genuine one.
- **Use a plagiarism checker:** while conducting a research on a topic, one might use certain sentences or phrases from the source.

VII. OBLIGATION

- Sunderrao Solanke Mahavidyalaya, Majalgaon encourages all its teachers and students to hold regular workshops about principles of anti-plagiarism and ethics in research work.
- All staff members, research scholars are provided a copy of the Anti- Plagiarism Policy.
- All research submitted to the college / University should have an attached report obtained from the plagiarism detection tool, certified by the publications committee.

VIII. REPORT AND HANDLING

- Any suspected case of plagiarism against a student or a research scholar or teachers will be addressed by the committee.
- According to the committee's recommendation with the plagiarism detection report, the level of plagiarism will be divided into the following categories:
 - a) Below 10%: The similarity between two documents within acceptable limits, relevant references present - No actions required.
 - b) 11-20%: Counseling on how to avoid plagiarism and resubmit the document.



M.S.P.Mandal's
SUNDERRAO SOLANKE MAHAVIDYALAYA
MAJALGAON, DIST.BEED (MH)-431131
NAAC Re-Accredited "A" Grade
Anti-Plagiarism Policy



- c) 21-50%: Online resources used to copy certain excerpts, no references mentioned, lack of knowledge. Such researchers would have to undergo research training and then resubmit document again.
- d) More than 50%: This would indicate high level plagiarism, intentional copying of someone's work. The researcher would have to redo the entire submission from initial stages as per guides recommendation and would be reprimanded as per the guidelines
- Any faculty member or a student found guilty of plagiarism has the right to appeal against the punishment awarded if they desire so.

IX. CONSTITUTION OF COMMITTEE

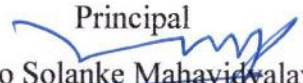
- The Research Committee constituted at the college will be by-default the Plagiarism Check Committee of the respective college. And it will continue to work in association with its library as Information Resource Centre.


IQAC

Coordinator
Coordinator
Internal Quality Assurance Cell (IQAC)
Sunderrao Solanke Mahavidyalaya,
Majalgaon, Dist.Beed (MS)


Chairman

Research Committee
Dr. B. D. Rathod

Principal

Sunderrao Solanke Mahavidyalaya,
PRINCIPAL
Sunderrao Solanke Mahavidyalaya
Majalgaon Dist. Beed (M.S.)