



Marathwada Shikshan Prasarak Mandal's

Sunderrao Solanke Mahavidyalaya, Majalgaon



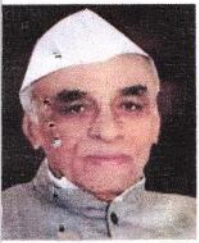
INTERNAL QUALITY ASSURANCE CELL

CRITERION-6: GOVERNANCE, LEADERSHIP AND MANAGEMENT

6.2 Strategy Development and Deployment

6.2.1 The functioning of the institutional bodies is effective and efficient as visible from policies, administrative setup, appointment and service rules, procedures, deployment of institutional Strategic/ perspective/development Plan etc.

Research Committee



M.S.P.Mandal's

SUNDERRAO SOLANKE MAHAVIDYALAYA

MAJALGAON, DIST.BEED (MH)-431131

NAAC Re-Accredited "A" Grade

Research Committee



Research Committee of SSM

Evolving a culture of standard research, one of the aims of any tertiary institute, is a slow and difficult process, but once it happens through conscious effort, credibility ensues. Research is a crucial activity for any college and without the active involvement of its faculty members and students; it will be difficult to sustain the academic and professional knowledge of the faculty members and students. Standard research activities generate new knowledge and skills, besides update existing ones. We can bring a shift in the paradigm from teacher-fuelled learning to students-initiated research and book based learning, to students creating their own meaning.

The research Committee of College is set up with the following visions and missions.

Vision

SSM will be a center of excellence in research and innovative practices in the region producing knowledge that will influence policy, teaching and partnerships with external agencies.

Mission

1. To engage faculty members and students in quality research projects and encourage them to publish papers in reputed journals, thereby generating confidence and interest in the outside universities and institutions to establish productive linkages, collaboration and MoUs with the college.
2. To generate research papers on various themes related to pedagogy and teacher development in the nation.
3. To generate innovative pedagogy to inform classroom teaching.
4. Nurture Gross National Happiness values through sustained quality education.



M.S.P.Mandal's
SUNDERRAO SOLANKE MAHAVIDYALAYA

MAJALGAON, DIST.BEED (MH)-431131

NAAC Re-Accredited "A" Grade



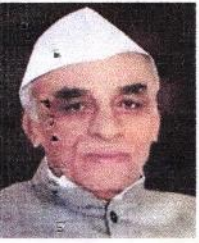
Research Committee

The College Research Committee (CRC) was formally instituted in 2004. Since then the college is deeply committed in promoting research activities among faculty members and students.

Aims:

The CRC aims to support and promote research and research training within and outside the college. Members of the CRC are required to play a proactive role in creating a research environment in the College. The committee will endeavour to foster research within the college and encourage members of staff to apply for research grants. Some of the specific aims include:

1. To encourage, maintain and support research activities in the college
2. To formulate and implement policy recommendations for the strategic development of research and research training in conjunction with other relevant committees of the college
3. To make proposals for allocation of funds for research activities in the college
4. To monitor operational goals within the context of the college research and research training management plans
5. To evaluate research proposals for research grants
6. To fund research projects
7. To facilitate peer review of research works and enable their publication in reputed journals
8. To appraise the faculty members and the students of the latest developments in research
Advise the college library on recent research journals and publications
9. To discuss other research-related matters that may from time to time be referred to it
10. To ensure the maintenance of ethical standards of research in the college
11. To ensure the maintenance and record of research activities carried out by the faculty members and disseminate research materials for general consumption



M.S.P.Mandal's
SUNDERRAO SOLANKE MAHAVIDYALAYA

MAJALGAON, DIST.BEED (MH)-431131

NAAC Re-Accredited "A" Grade

Research Committee



The powers, duties and functions of the College Research Committee:

1. To create conducive and supportive environment for faculty members and students to conduct research
2. To formulate and implement policy recommendations for the strategic development of research and research training in the college.
3. To make proposals for allocation of funds for college research activities
4. To monitor operational goals within the context of the college research and research training management plans
5. To evaluate research proposals for research grants
6. To facilitate peer review of research works and enable their publications in reputed journals
7. To establish linkages, MoUs with external organizations and Universities to conduct joint research projects
8. To provide consultancy services to schools, member colleges and other agencies
9. To apprise the faculty members and students of the latest developments in research
10. Advise the college library to subscribe to the latest research publications
11. To ensure the maintenance of ethical standards of research in the college
12. To ensure the maintenance and record of research activities carried out by the faculty and disseminate research materials for general consumption
13. Promote to faculties for organization conferences, seminars, symposium, workshops etc.

Research Committee

Sr. No.	Committee member	Designation
1	Dr. G. K. Sanap	Chairman
2	Dr. B.D. Rathod	Member
3.	Dr. N.K. Muley	Member
4.	Dr. R.T. Pawar	Member
5.	Dr. B.R. Nale	Member




Coordinator
Internal Quality Assurance Cell (IQAC)
Sunderrao Solanke Mahavidyalaya,
Majalgaon, Dist. Beed (MS)


PRINCIPAL
Sunderrao Solanke Mahavidyalaya
Majalgaon Dist. Beed (M.S.)