



Marathwada Shikshan Prasarak Mandal's

Sunderrao Solanke Mahavidyalaya, Majalgaon



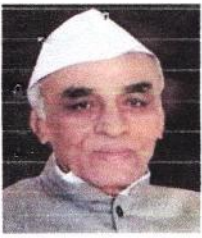
INTERNAL QUALITY ASSURANCE CELL

CRITERION-6: GOVERNANCE, LEADERSHIP AND MANAGEMENT

6.5 Internal Quality Assurance System

6.5.1 Internal Quality Assurance Cell (IQAC) has contributed significantly for institutionalizing the quality assurance strategies and processes. It reviews teaching learning process, structures & methodologies of operations and learning outcomes at periodic intervals and records the incremental improvement in various activities.

Feedback on Infrastructure and Facilities



M.S.P.Mandal's
SUNDERRAO SOLANKE MAHAVIDYALAYA

MAJALGAON, DIST.BEED (MH)-431131

NAAC Re-Accredited "A" Grade



Feedback Analysis

A REPORT ON FEEDBACK BY STUDENTS ON INFRASTRUCTURE & FACILITIES

ACADEMIC YEAR 2021 – 2022

Online feedback on curriculum collected from the student for the academic year 2021-2022 on various important aspects which include:

1. Library Facilities
2. Admission Process
3. Scholarships / EBC / Freeships
4. Infrastructure Facilities
5. Sports Facilities
6. NSS Facility

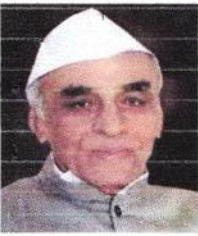
592 students participated in the survey consisting of 6 aspects/questions.

Summary of Feedback

FEEDBACK BY STUDENTS ON INFRASTRUCTURE & FACILITIES

ACADEMIC YEAR 2021 – 2022

| Sr. No. | Parameters | Extreme/Outstanding | Good | Moderate | Slight | Not At All |
|---------|--------------------------------|---------------------|------|----------|--------|------------|
| 1 | Library Facilities | 327 | 118 | 36 | 31 | 81 |
| 2 | Admission Process | 311 | 128 | 60 | 41 | 53 |
| 3 | Scholarships / EBC / Freeships | 305 | 142 | 54 | 38 | 54 |
| 4 | Infrastructure Facilities | 314 | 129 | 49 | 42 | 58 |
| 5 | Sports Facilities | 298 | 138 | 60 | 41 | 55 |
| 6 | NSS Facility | 334 | 108 | 55 | 34 | 62 |

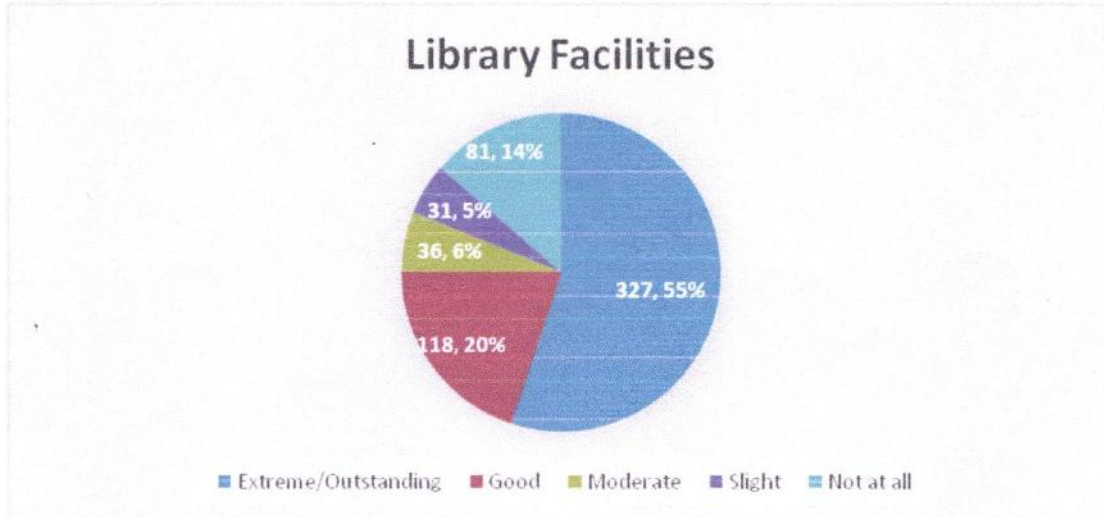


M.S.P.Mandal's
SUNDERRAO SOLANKE MAHAVIDYALAYA
MAJALGAON, DIST.BEED (MH)-431131
NAAC Re-Accredited "A" Grade
Feedback Analysis



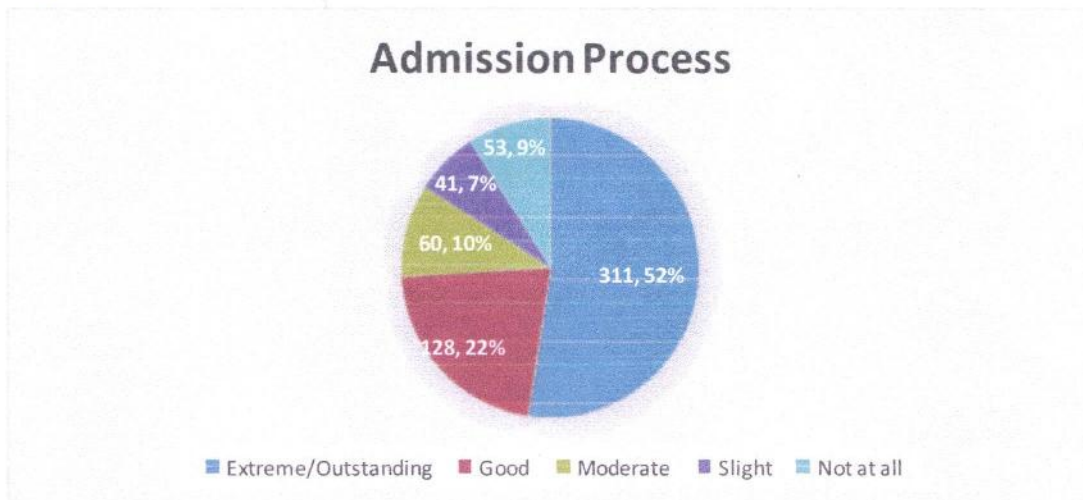
1. Library Facilities

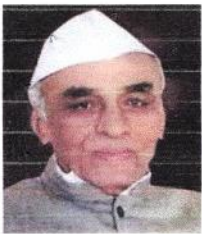
Responses: 592



2. Admission Process

Responses: 592



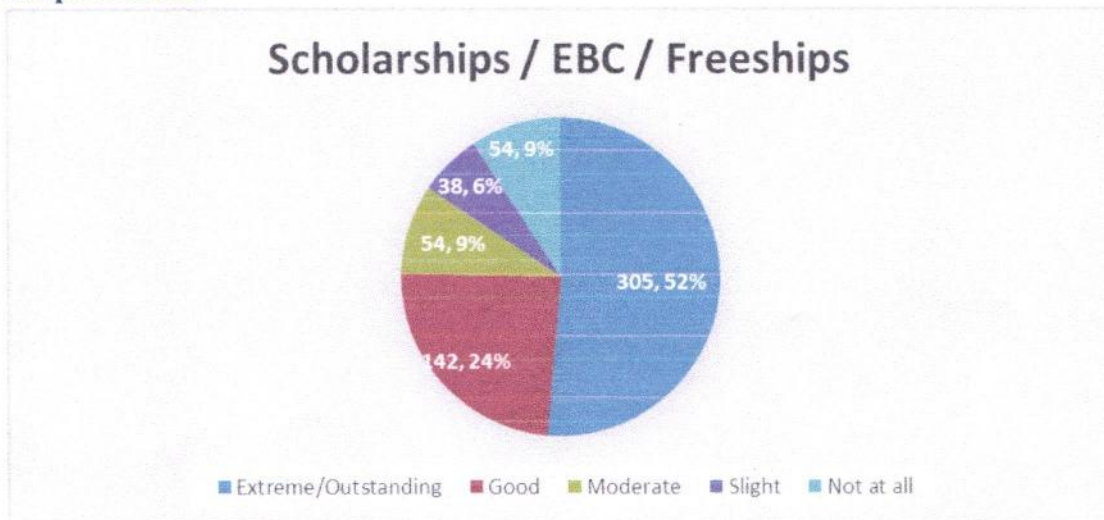


M.S.P.Mandal's
SUNDERRAO SOLANKE MAHAVIDYALAYA
MAJALGAON, DIST.BEED (MH)-431131
NAAC Re-Accredited "A" Grade
Feedback Analysis



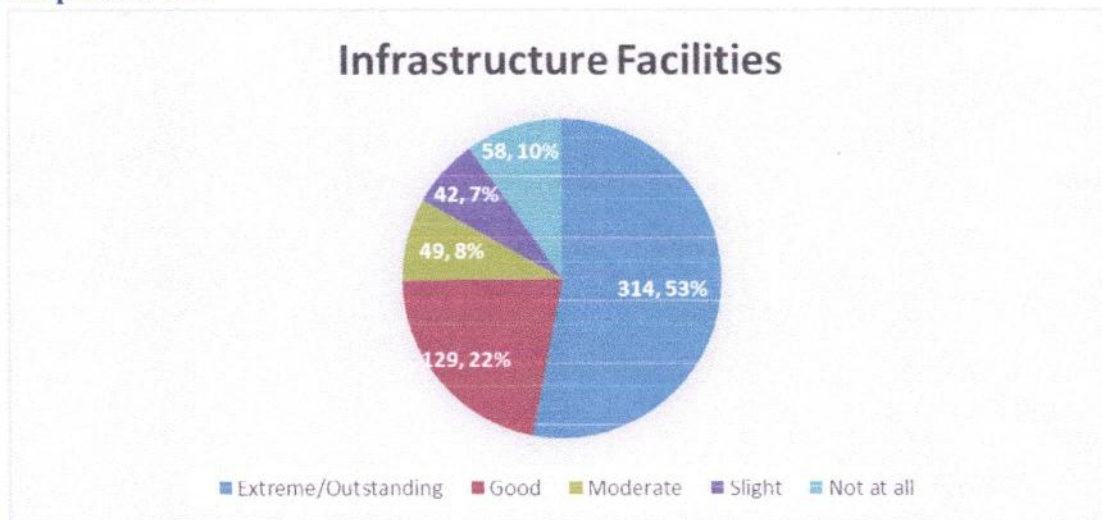
3. Scholarships / EBC / Freeships

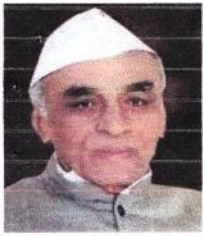
Responses: 592



4. Infrastructure Facilities

Responses: 592





M.S.P.Mandal's
SUNDERRAO SOLANKE MAHAVIDYALAYA

MAJALGAON, DIST.BEED (MH)-431131

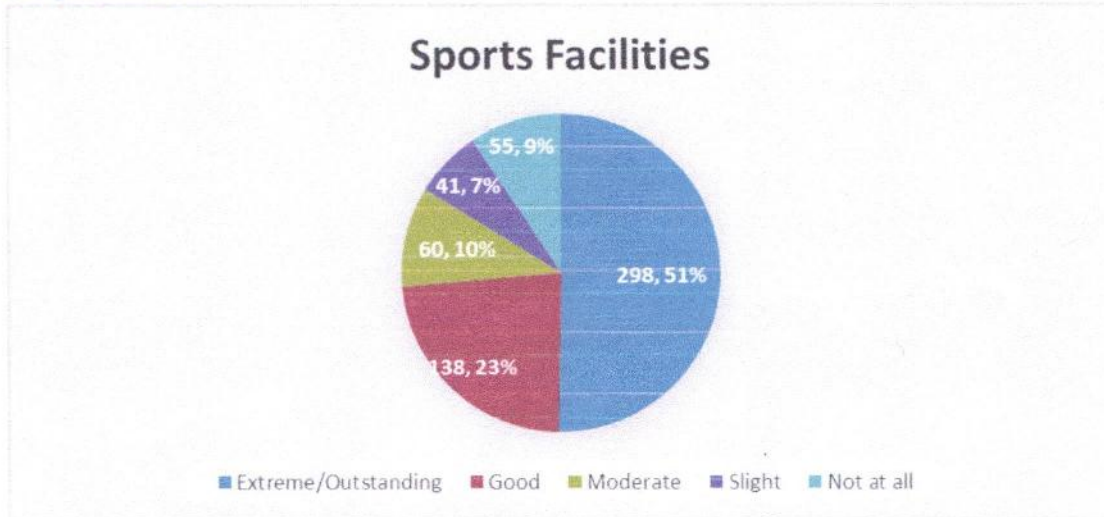
NAAC Re-Accredited "A" Grade



Feedback Analysis

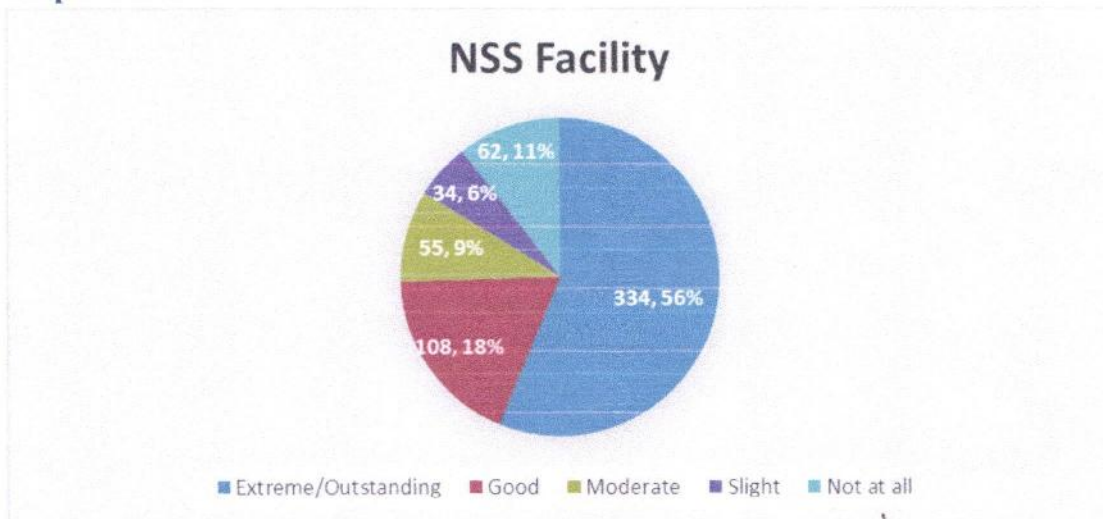
5. Sports Facilities

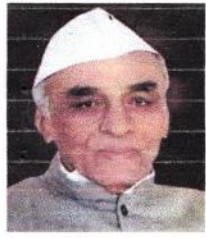
Responses: 592



6. NSS Facility

Responses: 592





M.S.P.Mandal's
SUNDERRAO SOLANKE MAHAVIDYALAYA
MAJALGAON, DIST.BEED (MH)-431131
NAAC Re-Accredited "A" Grade



Feedback Analysis

Respondents Details:

1. Library Facilities

From the total 592 student respondents, maximum (327) respondents rated as excellent in respect of Library Facilities, followed by 118 respondents, rated it as good, 36 moderate, 31 slight and 81 respondents replied as not at all average in this respect.

2. Admission Process

It is found that the maximum (311) of student's respondent opined that the admission process found excellent, 128 think as good, 60 replied as it is moderate, 41 slight and 53 as not at all.

3. Scholarships / EBC / Freeships

The highest (305) respondents from the total students noted that the facilities of scholarships/ EBC/Freeship is excellent; followed by 142 remarked as good, 54 thinks it is moderate. 38 slight and 54 not at all.

4. Infrastructure Facilities

From the total 592 respondents, majority (314) of student respondents opined that the infrastructure facilities are excellent, 129 opined it is good, 49 rated it is moderate, 42 as slight and 58 as not at all.

5. Sports Facilities

It is found that the highest (298) number of respondents opined that the sports facilities are excellent. 138 thinks in this case as good, 60 opined as moderate, 41 slight and 55 as not at all.

6. NSS Facility


The collected information indicate that the maximum number of respondents (334) found the NSS facility is excellent, followed by 108 says it is good, 55 opined as it is moderate, 34 slight and 62 not at all.

Conclusion:

The consolidated feedback report of students on Infrastructure facilities is shared with the all HOD's / Coordinators / Officials of different departments for further appropriate action and decision making in this respect.


Coordinator
Internal Quality Assurance Cell (IQAC)
Sunderrao Solanke Mahavidyalaya,
Majalgaon, Dist. Beed (MS)




PRINCIPAL
Sunderrao Solanke Mahavidyalaya
Majalgaon Dist. Beed (M.S.)