



Marathwada Shikshan Prasarak Mandal's

Sunderrao Solanke Mahavidyalaya, Majalgaon



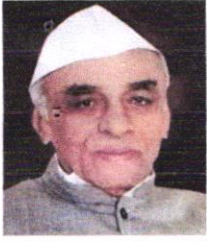
INTERNAL QUALITY ASSURANCE CELL

Criterion – 3 Research, Innovations and Extension

3.2- Innovation Ecosystem

3.2.1 Institution has created an ecosystem for Innovations and has initiatives for Creation and Transfer of Knowledge (Patent filed, published, incubation center facilities in the HEI to be considered)

Incubation Centre



M.S.P. Mandal's
SUNDERRAO SOLANKE MAHAVIDYALAYA

MAJALGAON, DIST.BEED (MH)-431131

NAAC Re-Accredited "A" Grade



Research Development Committee

Programme on Incubation Centre

The main reason to establish incubation centre is to create an ecosystem for creation and transfer of knowledge. The existing facilities are used by the faculty members to take up their research activities. The incubation centre gives hands-on training to students to excel in various verticals and provides an opportunity for the students to enhance their knowledge.

The college organized the programme on incubation centre with the help of Govt. of Maharashtra on dated 09/01/2022. The mobile vehicle of Govt. of Maharashtra was present at this programme. This vehicle has the LED screen through that they plat the various clip on the research and startup progrmme run by the Govt. of Maharashtra. The present programe was inaugurated by principal of the college Prof. G. K. Sanap and the other faculty member of the college was also present for this programme. The main aim of the current incubation centre progrmme is to impart research knowledge among the faculty members and students.

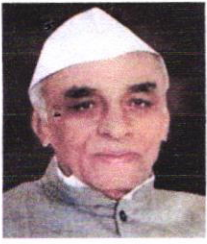
Coordinator

Internal Quality Assurance Cell (IQAC)
Sunderrao Solanke Mahavidyalaya,
Majalgaon, Dist.Beed (MS)



PRINCIPAL

Sunderrao Solanke Mahavidyalaya
Majalgaon Dist. Beed (M.S.)



M.S.P. Mandal's
SUNDERRAO SOLANKE MAHAVIDYALAYA

MAJALGAON, DIST.BEED (MH)-431131

NAAC Re-Accredited "A" Grade

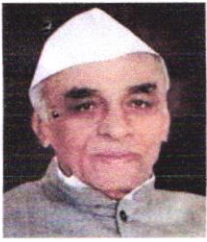


Research Development Committee



Latitude: 19.158871
Longitude: 76.206914
Elevation: 433.5±4 m
Accuracy: 151.5 m
Time: 09-01-2022 14:47
Note: SSM

Powered by NoteCam



M.S.P. Mandal's SUNDERRAO SOLANKE MAHAVIDYALAYA

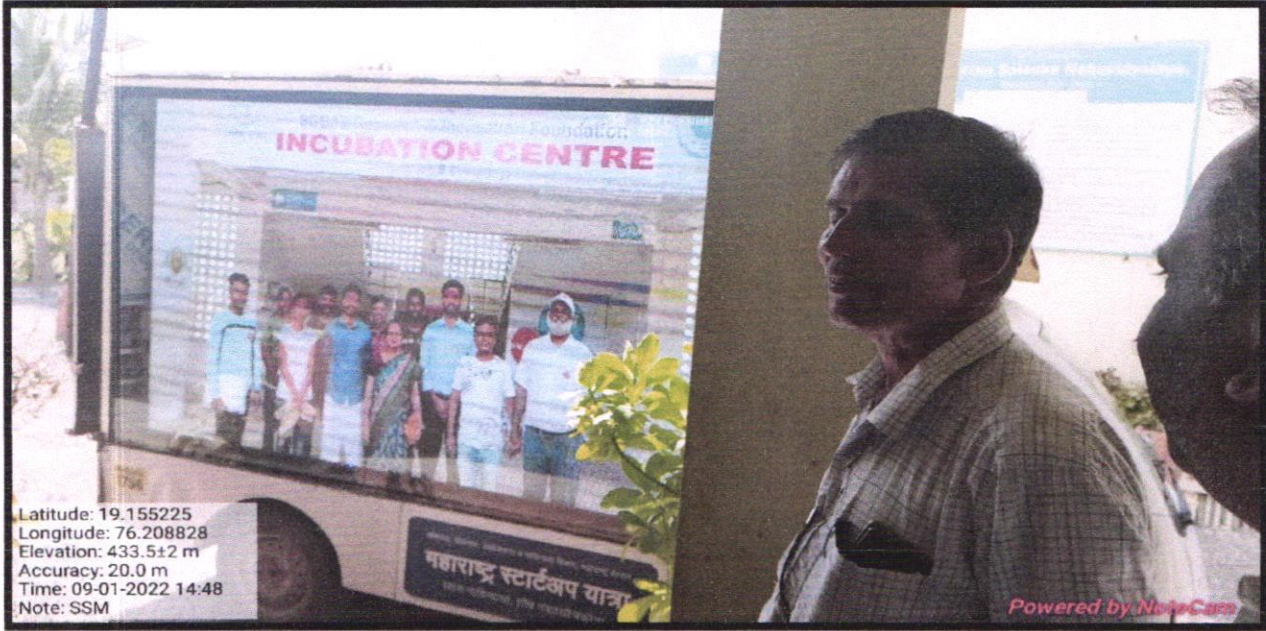
MAJALGAON, DIST.BEED (MH)-431131

NAAC Re-Accredited "A" Grade



Research Development Committee

Photographs of programme on Incubation Centre



Latitude: 19.155225
Longitude: 76.208828
Elevation: 433.5±2 m
Accuracy: 20.0 m
Time: 09-01-2022 14:48
Note: SSM

Powered by NoteCam



Latitude: 19.155215
Longitude: 76.208921
Elevation: 433.5±2 m
Accuracy: 20.0 m
Time: 09-01-2022 14:52
Note: SSM

Powered by NoteCam

Coordinator

Internal Quality Assurance Cell (IQAC)
Sunderrao Solanke Mahavidyalaya,
Majalgaon, Dist. Beed (MS)



PRINCIPAL

Sunderrao Solanke Mahavidyalaya
Majalgaon Dist. Beed (M.S.)