



**Marathwada Shikshan Prasarak Mandal's**

## **Sunderrao Solanke Mahavidyalaya, Majalgaon**



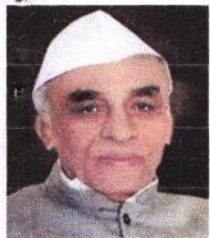
### **INTERNAL QUALITY ASSURANCE CELL**

#### **CRITERION-6: GOVERNANCE, LEADERSHIP AND MANAGEMENT**

##### **6.5 Internal Quality Assurance System**

6.5.1 Internal Quality Assurance Cell (IQAC) has contributed significantly for institutionalizing the quality assurance strategies and processes. It reviews teaching learning process, structures & methodologies of operations and learning outcomes at periodic intervals and records the incremental improvement in various activities.

#### **Feedback on Teachers and ATR 2021-2022**



M.S.P.Mandal's  
**SUNDERRAO SOLANKE MAHAVIDYALAYA**

MAJALGAON, DIST.BEED (MH)-431131

NAAC Re-Accredited "A" Grade



## Feedback Analysis

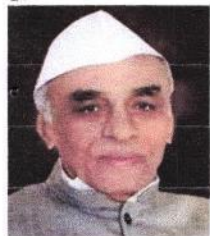
### A REPORT ON THE STUDENTS FEEDBACK ON TEACHERS

#### ACADEMIC YEAR 2021 – 2022

Feedback on curriculum collected from the students on Teachers of various discipline in the college for the academic year 2021-2022 on various important aspects which include:

1. Command on Language
2. Class Control
3. General Knowledge
4. Regularity and Punctuality
5. Skill in Explaining Difficult Points
6. Clarity in Approach and Thinking
7. Behavior with Students
8. Usefulness in Counselling Personal Difficulties of Students
9. Teacher's Participation and Motivation in Extra- curricular Activities by students
10. Teacher's willingness to help Students by Conducting extra Classes
11. Commands on Subject
12. Use of Illustrations and Current Events in Teaching
13. frequency of Resolving students doubts & queries
14. Skill in Making the Subject Interesting
15. Frequency of asking short questions in class while teaching
16. Preparing students for University Exams
17. Use of Teaching Aids
18. Conducting Test and Tutorials
19. Providing sample questions and Model Answer
20. Assessment of Assignments Submitted by the Students

**1780 students participated in the survey consisting of 20 aspects/questions on curriculum.**



M.S.P.Mandal's  
**SUNDERRAO SOLANKE MAHAVIDYALAYA**

MAJALGAON, DIST.BEED (MH)-431131

NAAC Re-Accredited "A" Grade

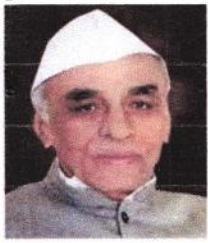
**Feedback Analysis**

**Summary of Feedback**

**STUDENTS FEEDBACK ON TEACHERS**

**ACADEMIC YEAR 2021 – 2022**

Sr. NO.	Parameters	Not at all	Slight	Moderate	Good	Extreme/ Outstanding
1	Command on Language	226	120	120	314	1000
2	Class Control	165	148	141	380	946
3	General Knowledge	183	121	135	393	948
4	Regularity and Punctuality	186	129	134	405	926
5	Skill in Explaining Difficult Points	162	127	150	366	975
6	Clarity in Approach and Thinking	164	115	139	395	967
7	Behavior with Students	182	102	142	373	981
8	Usefulness in Counseling Personal Difficulties of Students	174	139	127	394	946
9	Teacher's Participation and Motivation in Extra- curricular Activities by students	180	113	157	392	938
10	Teacher's willingness to help Students by Conducting extra Classes	164	140	158	351	967
11	Commands on Subject	162	132	153	388	945
12	Use of Illustrations and Current Events in Teaching	163	128	158	364	967
13	frequency of Resolving students doubts & queries	168	117	150	393	952
14	Skill in Making the Subject Interesting	156	117	171	355	981
15	Frequency of asking short questions in class while teaching	167	134	128	396	955
16	Preparing students for University Exams	176	134	130	351	989
17	Use of Teaching Aids	166	117	163	392	942
18	Conducting Test and Tutorials	171	115	150	339	1005
19	Providing sample questions and Model Answer	180	106	131	379	984
20	Assessment of Assignments Submitted by the Students	183	115	113	347	1022



M.S.P.Mandal's  
**SUNDERRAO SOLANKE MAHAVIDYALAYA**

MAJALGAON, DIST.BEED (MH)-431131

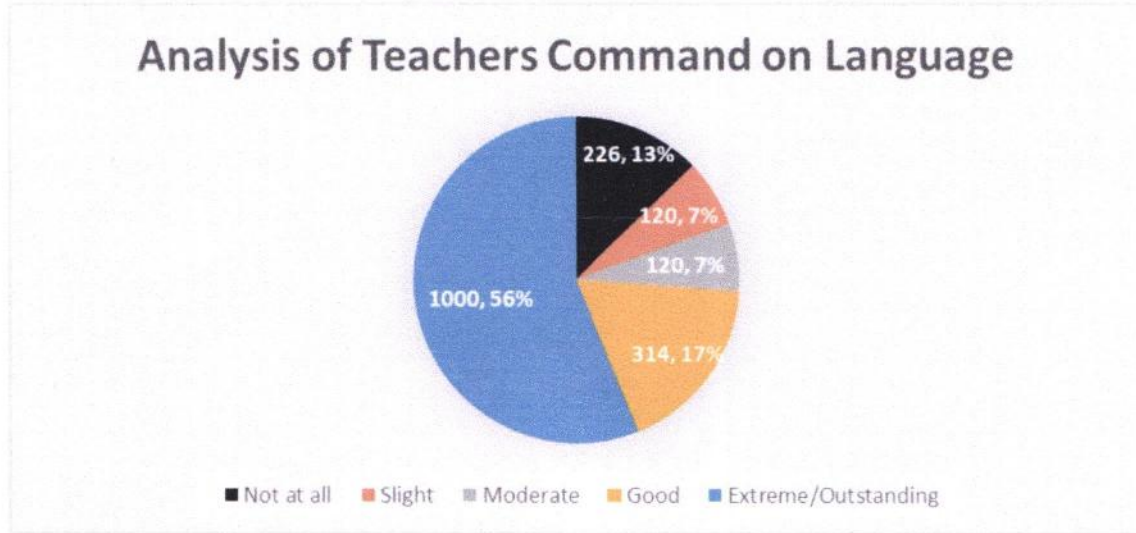
NAAC Re-Accredited "A" Grade



**Feedback Analysis**

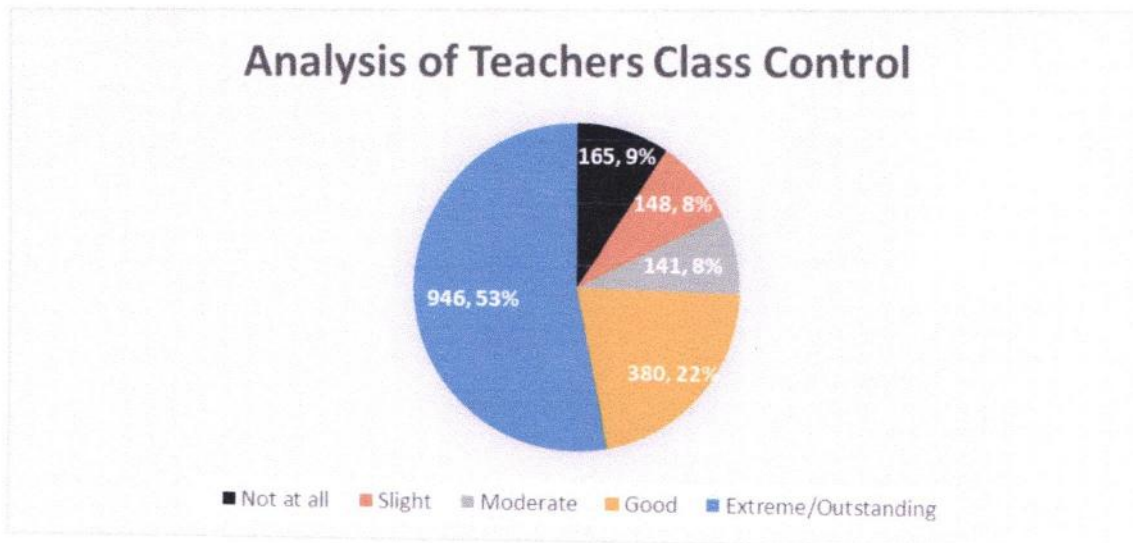
**1. Command on Language**

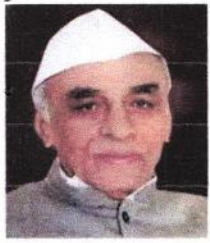
Responses: 1780



**2. Class Control**

Responses: 1780





M.S.P.Mandal's  
**SUNDERRAO SOLANKE MAHAVIDYALAYA**

MAJALGAON, DIST.BEED (MH)-431131

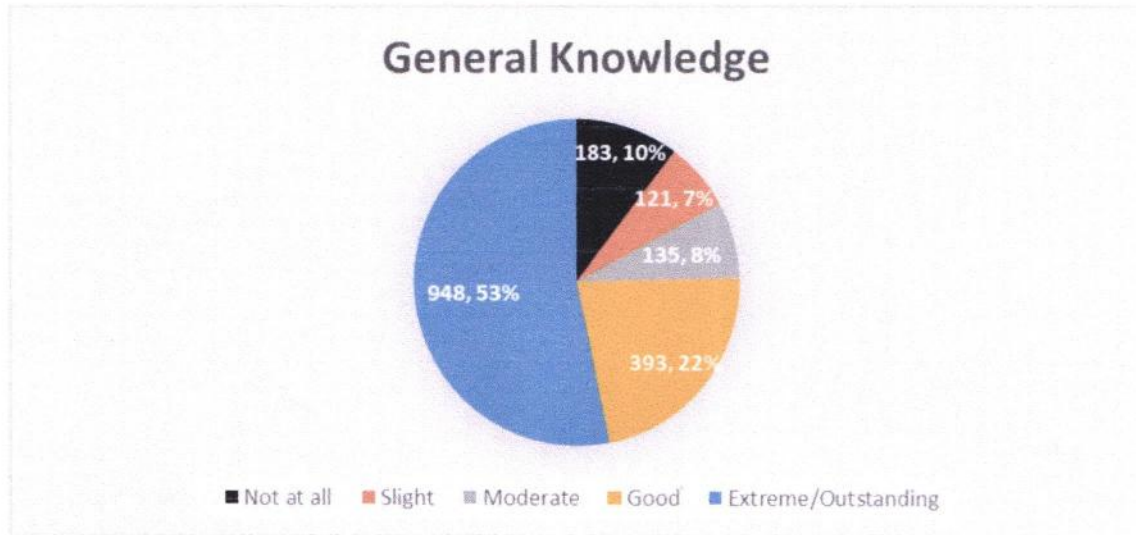
NAAC Re-Accredited "A" Grade



**Feedback Analysis**

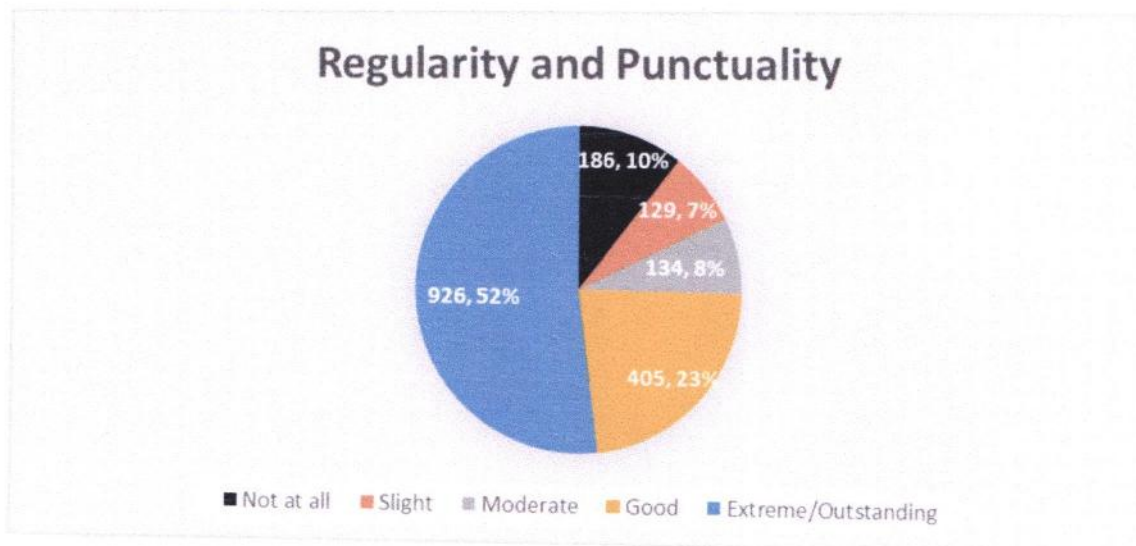
**3. General Knowledge**

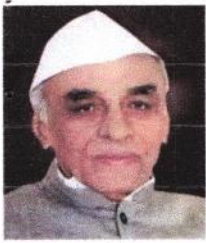
Responses: 1780



**4. Regularity and Punctuality**

Responses: 1780





M.S.P.Mandal's  
**SUNDERRAO SOLANKE MAHAVIDYALAYA**

MAJALGAON, DIST.BEED (MH)-431131

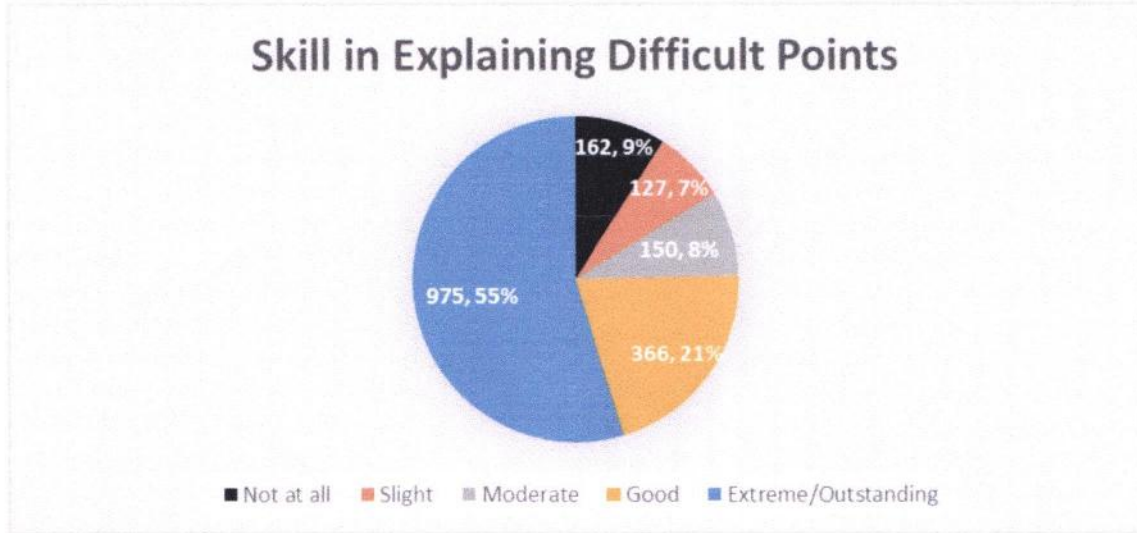
NAAC Re-Accredited "A" Grade



**Feedback Analysis**

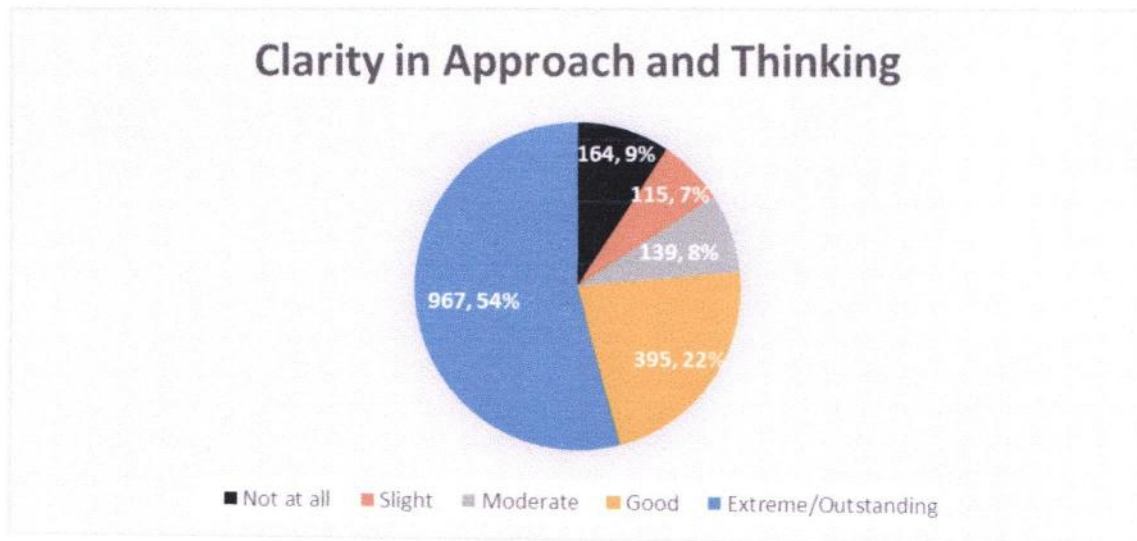
**5. Skill in Explaining Difficult Points**

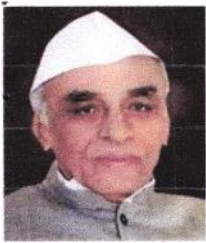
Responses: 1780



**6. Clarity in Approach and Thinking**

Responses: 1780

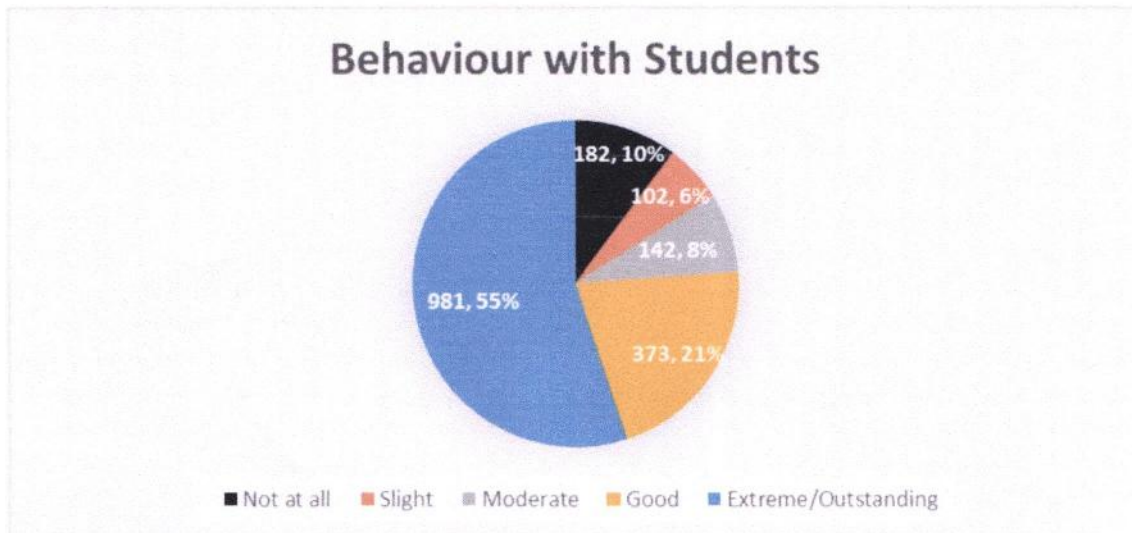




## Feedback Analysis

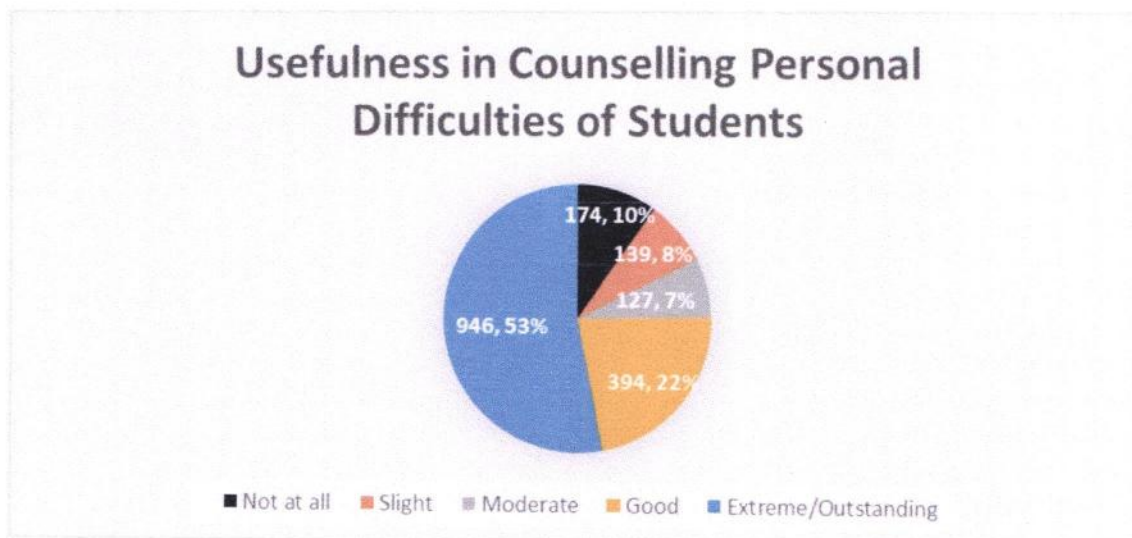
### 7. Behavior with Students

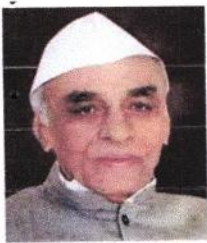
Responses: 1780



### 8. Usefulness in Counseling Personal Difficulties of Students

Responses: 1780





M.S.P.Mandal's  
**SUNDERRAO SOLANKE MAHAVIDYALAYA**

MAJALGAON, DIST.BEED (MH)-431131

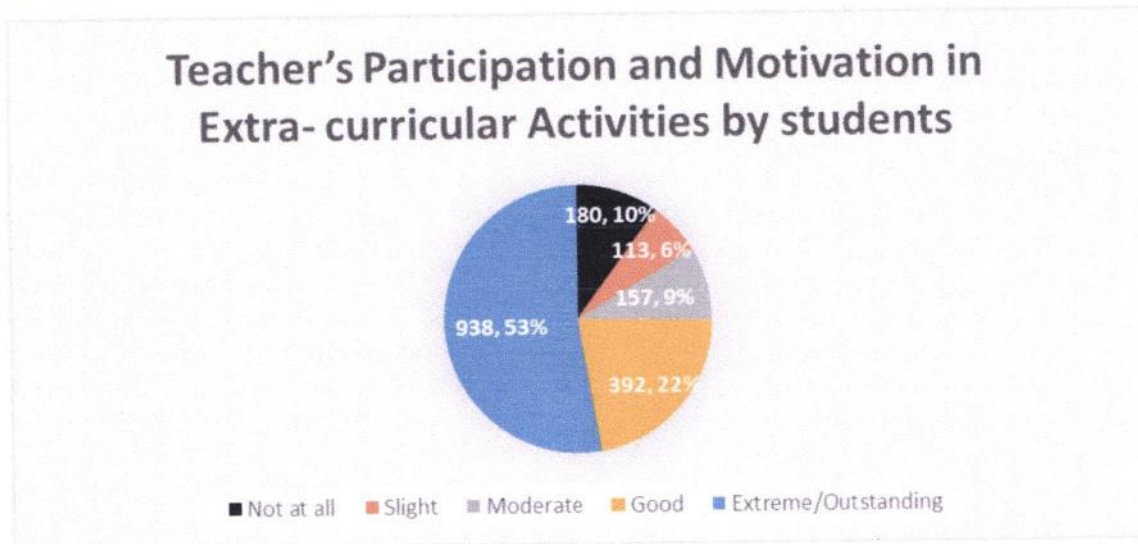
NAAC Re-Accredited "A" Grade



**Feedback Analysis**

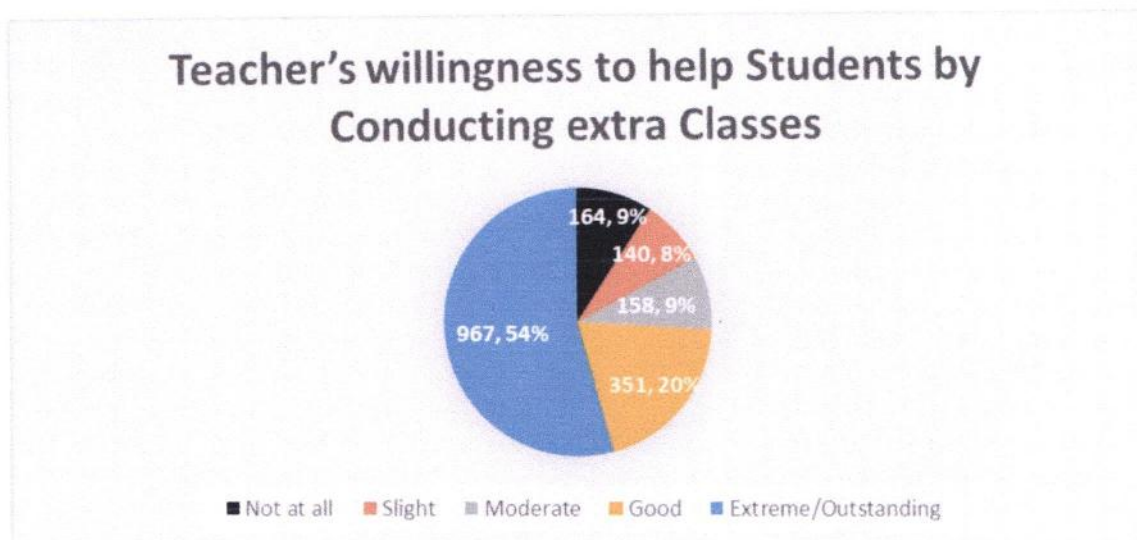
**9. Teacher's Participation and Motivation in Extra- curricular Activities by students**

Responses: 1780

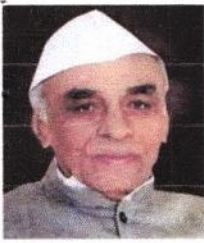


**10. Teacher's willingness to help Students by Conducting extra Classes**

Responses: 1780







M.S.P.Mandal's  
**SUNDERRAO SOLANKE MAHAVIDYALAYA**

MAJALGAON, DIST.BEED (MH)-431131

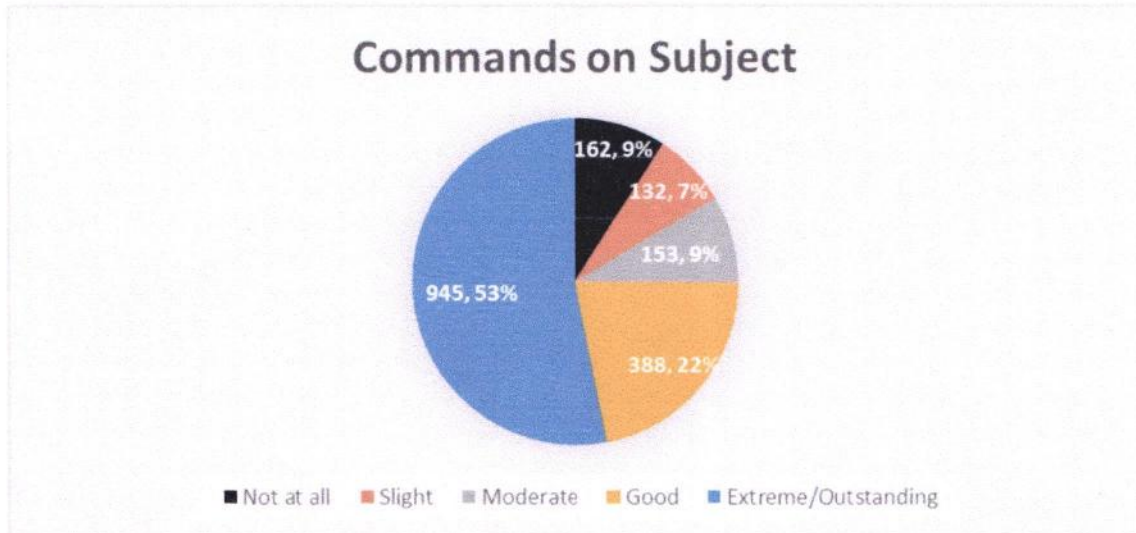
NAAC Re-Accredited "A" Grade



**Feedback Analysis**

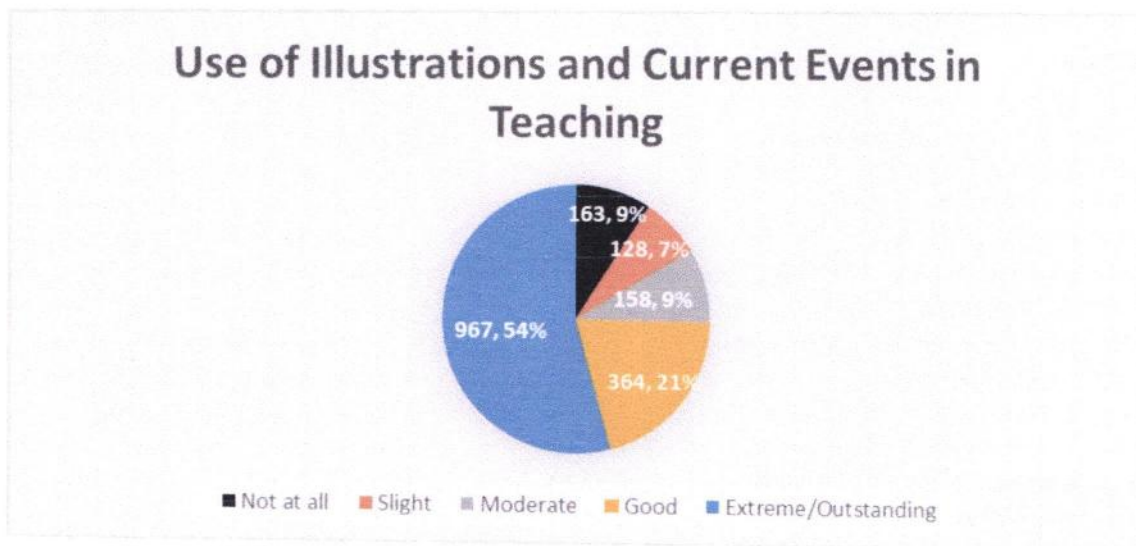
**11. Commands on Subject**

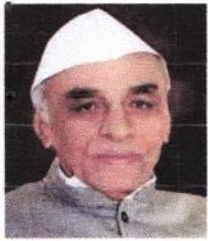
Responses: 1780



**12. Use of Illustrations and Current Events in Teaching**

Responses: 1780





M.S.P.Mandal's  
**SUNDERRAO SOLANKE MAHAVIDYALAYA**

MAJALGAON, DIST.BEED (MH)-431131

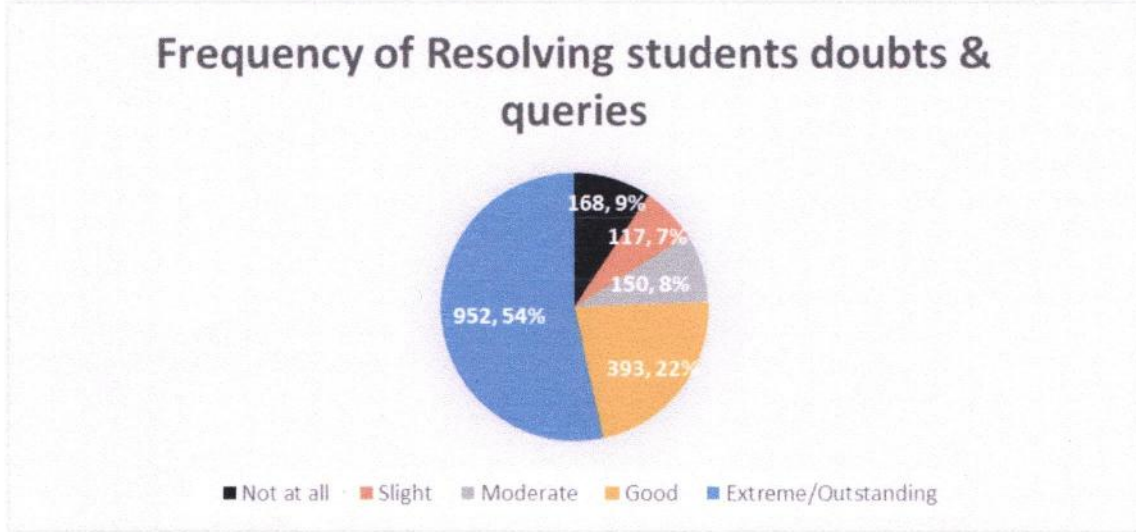
NAAC Re-Accredited "A" Grade



**Feedback Analysis**

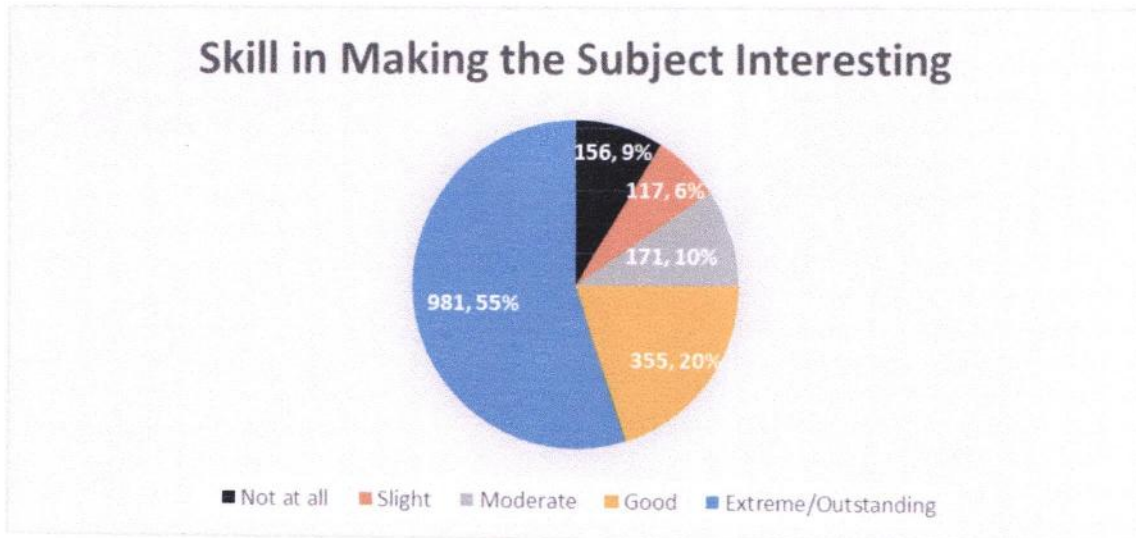
**13. frequency of Resolving students doubts & queries**

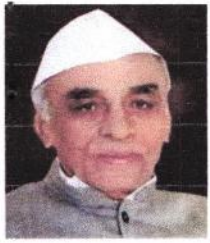
Responses: 1780



**14. Skill in Making the Subject Interesting**

Responses: 1780





M.S.P.Mandal's  
**SUNDERRAO SOLANKE MAHAVIDYALAYA**

MAJALGAON, DIST.BEED (MH)-431131

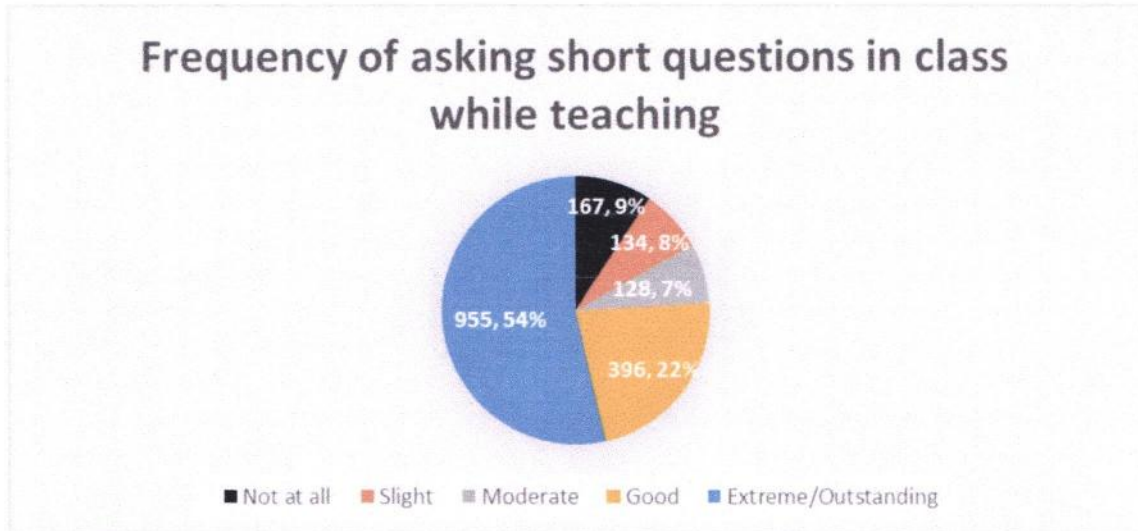
NAAC Re-Accredited "A" Grade



**Feedback Analysis**

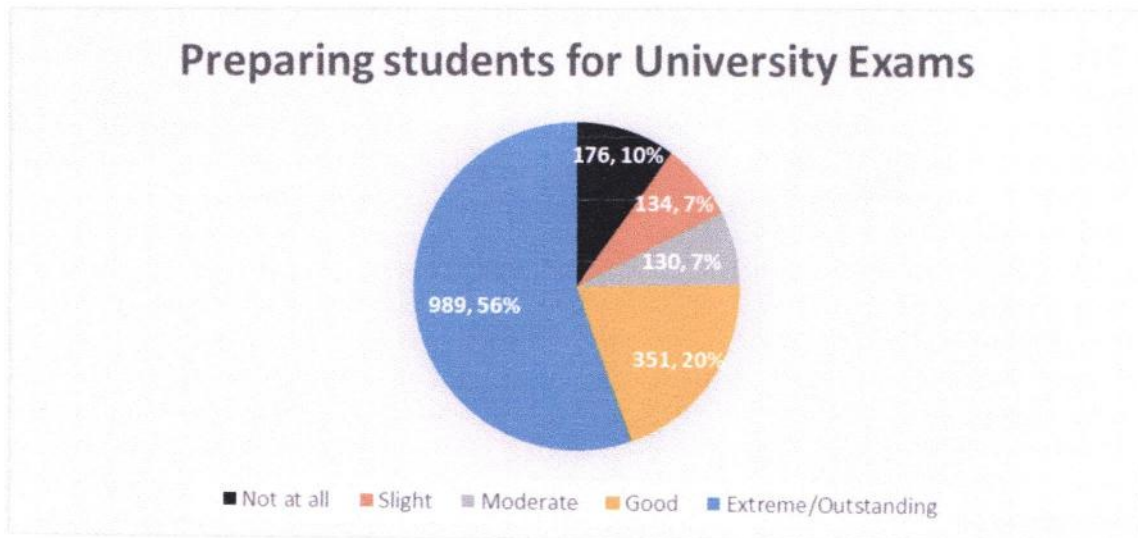
**15. Frequency of asking short questions in class while teaching**

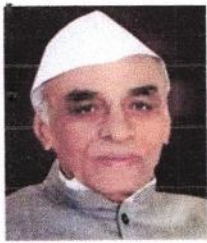
Responses: 1780



**16. Preparing students for University Exams**

Responses: 1780





M.S.P.Mandal's  
**SUNDERRAO SOLANKE MAHAVIDYALAYA**

MAJALGAON, DIST.BEED (MH)-431131

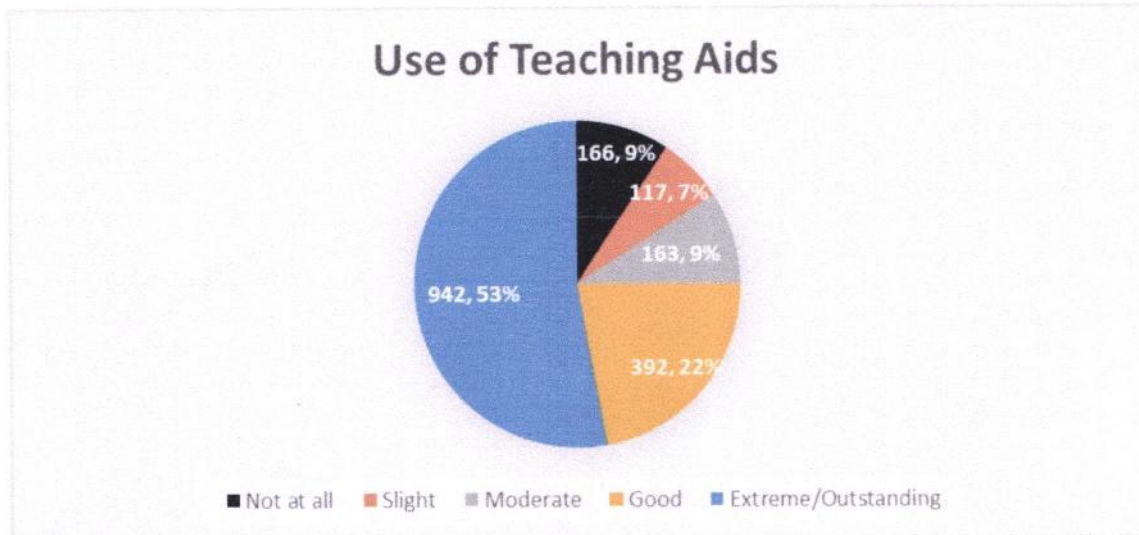
NAAC Re-Accredited "A" Grade



**Feedback Analysis**

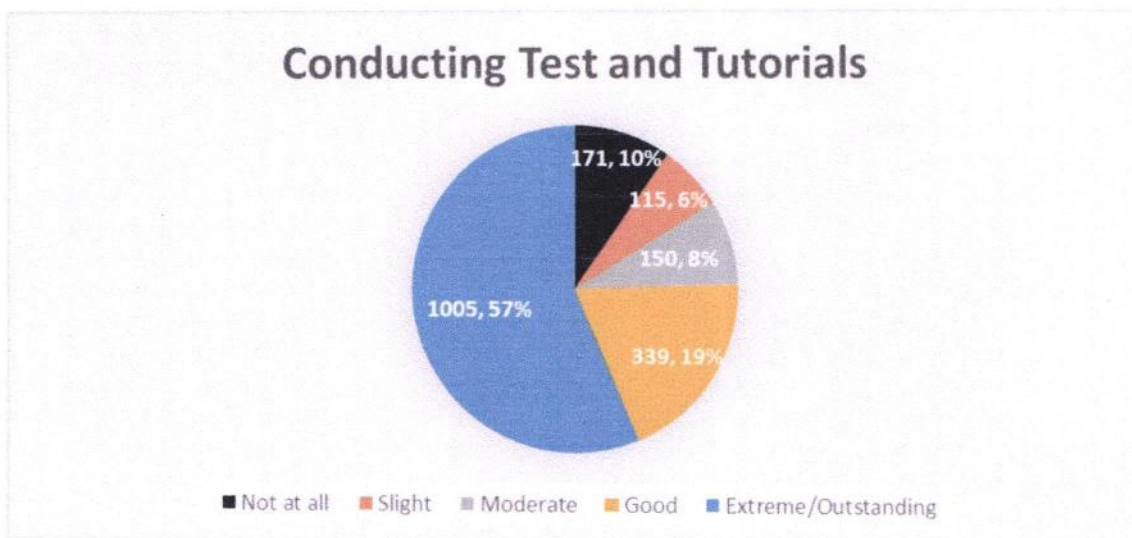
**17. Use of Teaching Aids**

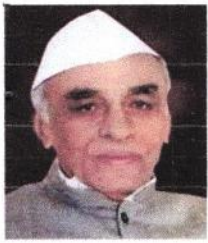
Responses: 1780



**18. Conducting Test and Tutorials**

Responses: 1780





M.S.P.Mandal's  
**SUNDERRAO SOLANKE MAHAVIDYALAYA**

MAJALGAON, DIST.BEED (MH)-431131

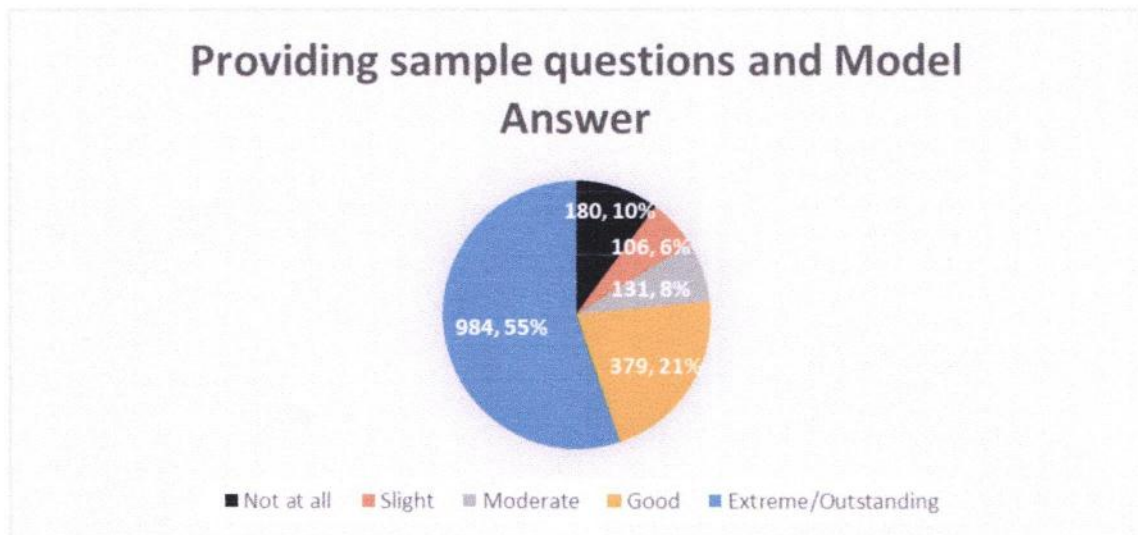
NAAC Re-Accredited "A" Grade



## Feedback Analysis

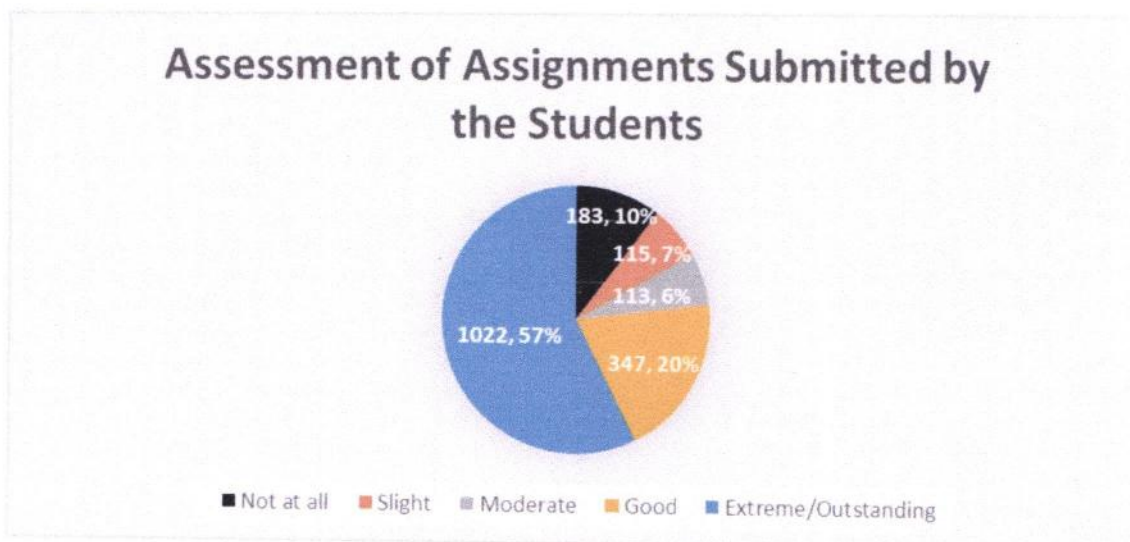
### 19. Providing sample questions and Model Answer

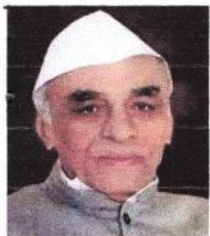
Responses: 1780



### 20. Assessment of Assignments Submitted by the Students

Responses: 1780





M.S.P.Mandal's  
**SUNDERRAO SOLANKE MAHAVIDYALAYA**

MAJALGAON, DIST.BEED (MH)-431131

NAAC Re-Accredited "A" Grade



## Feedback Analysis

### Respondent Details:

#### 1. Command on Language

From total 1780 respondents, maximum 1000 students rated as outstanding, 314 good, 120 moderate, 120 slight and 226 rated as not at all.

#### 2. Class Control

946 students think teachers class control is outstanding, 380 respondents says good, 141 moderate, 148 slight while 165 rated not at all class control.

#### 3. General Knowledge

From total 1780 student respondents maximum (948) rated general knowledge of teachers extreme. 393 says good, 135 moderate, 121 slight and 183 opined as not at all.

#### 4. Regularity and Punctuality

Maximum (926) student respondent opined for extreme/outstanding- regularity and punctuality of teachers. 405 rated as good, 134 moderate, 129 slight and 186 students opined not at all.

#### 5. Skill in Explaining Difficult Points

Out of total 1780 students respondent maximum 975 rated the skill of explaining different points of teachers as outstanding. 366 good, 150 moderate, 127 slight and 162 opined not at all.

#### 6. Clarity in Approach and Thinking

Maximum (967) student respondent think the clarity in approach and thinking of teachers is outstanding. 395 as good, 139 moderate, 115 slight and 164 opined as not at all.

#### 7. Behaviour with Students

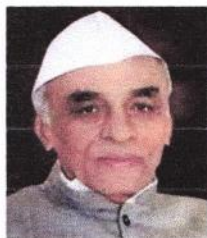
From total 1780 respondents highest that is 981 students think the behavior of teachers towards them is extreme/outstanding. 373 as good, 142 moderate, 102 slight while 182 opined for not at all.

#### 8. Usefulness in Counselling Personal Difficulties of Students

946 opined for outstanding, 394 good, 127 moderate, 139 slight and 174 student respondent opined for not at all for respective category.

#### 9. Teacher's Participation and Motivation in Extra- curricular Activities by students

Highest that is 938 student taught teachers participation and motivation in extracurricular activities is extreme. 392 think as good, 157 moderate, 113 slight and 180 opined as not at all.



M.S.P.Mandal's  
**SUNDERRAO SOLANKE MAHAVIDYALAYA**

MAJALGAON, DIST.BEED (MH)-431131

NAAC Re-Accredited "A" Grade



## Feedback Analysis

### 10. Teacher's willingness to help Students by Conducting extra Classes

967 respondents rated teacher's willingness to help them as outstanding. 351 good, 158 as moderate, 140 slight and 164 of total 1780 opined for not at all in this aspect.

### 11. Commands on Subject

The maximum i.e. 945 student thinks teachers command on subject is outstanding while 388 thinks good, 153 moderate, 132 slight, 162 opined for not at all.

### 12. Use of Illustrations and Current Events in Teaching

From total 1780 respondents, maximum (967) rated the teachers use of illustrations and current events in teaching as extreme. 364 as good, 158 as moderate, 128 slight and 163 as not at all.

### 13. frequency of Resolving students doubts & queries

952 respondent opines as extreme, 393 good, 150 slight, 117 slight while 168 as not at all frequent in doubt solving.

### 14. Skill in Making the Subject Interesting

Highest that is 981 students think skill of teachers in making subject interesting is outstanding. 355 as good, 171 as moderate, 117 slight and 156 opined not at all in this aspect.

### 15. Frequency of asking short questions in class while teaching

Out of total 1780 respondents the maximum (955) opined the frequency of asking short questions in class while teaching by teachers is extreme. 396 as good, 128 moderate, 134 slight and 167 opined it as not at all.

### 16. Preparing students for University Exams

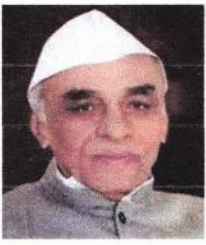
Highest 989 respondent's opined preparation of students for exams by teachers as extreme. 351 as good, 130 moderate, 134 slight and 176 opined for not at all.

### 17. Use of Teaching Aids

Out of 1780 student respondents, 942 opined teaching aids use by teachers as extreme. 392 as good, 163 moderate, 117 slight while 166 opined for not at all.

### 18. Conducting Test and Tutorials

The highest response received for this particular question as outstanding or extreme i.e. of 1005 out of 1780. 339 as good, 150 as moderate, 115 slight and 171 as not at all.



M.S.P.Mandal's  
**SUNDERRAO SOLANKE MAHAVIDYALAYA**  
MAJALGAON, DIST.BEED (MH)-431131  
NAAC Re-Accredited "A" Grade  
**Feedback Analysis**



**19. Providing sample questions and Model Answer**

984 students rated teachers for providing sample question and model answer as outstanding. 379 as good, 131 moderate, 106 slight and 180 opined for not at all.

**20. Assessment of Assignments Submitted by the Students**

Highest that is 1022 respondents found teachers assessment of assignments submitted by students extreme while 347 opined for good, 113 moderate, 115 slight and 183 as not at all.

**Conclusion:**

The consolidated feedback report of students is shared with the all HOD's / Coordinators / Officials of different departments for further appropriate action and decision making in this respect.

  
**Principal**  
Sunderrao Solanke Mahavidyalaya  
Majalgaon Dist. Beed (M.S.)





Marathwada Shikshan Prasarak Mandal's

**Sunderrao Solanke Mahavidyalaya, Majalgaon**

**Internal Quality Assurance Cell**

**Feedback Analysis**

**Feedback by Students on Teachers**

**Action Taken Report**

**2021-2022**

After the analysis of feedback provided by students following actions were taken in order to improve upon teacher's quality and performance

- Student's feedback on teacher was informed.
- Teachers were felicitate at meeting for good and positive feedback
- Teachers were motivated to use ICT tools as much as they can.
- Discussion on improvement and infrastructural facility
- Teachers were advised to keenly follow mentor – mentee program.
- It was advised to the teachers to give more weighted on learning values like skill, analytical abilities etc.

**Coordinator**

Internal Quality Assurance Cell (IQAC)  
Sunderrao Solanke Mahavidyalaya  
Majalgaon, Dist. Beed (MS)

**PRINCIPAL**

Sunderrao Solanke Mahavidyalaya  
Majalgaon Dist. Beed (M.S.)