



Marathwada Shikshan Prasarak Mandal's

Sunderrao Solanke Mahavidyalaya, Majalgaon



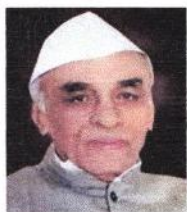
INTERNAL QUALITY ASSURANCE CELL

Criterion 1- Curricular Aspects

1.4 Feedback System

1.4.1 Institution obtains feedback on the academic performance and ambience of the institution from various stakeholders, such as Students, Teachers, Employers, Alumni etc. and action taken report on the feedback is made available on institutional website (Yes or No).

Feedback 2021-2022



M.S.P.Mandal's
SUNDERRAO SOLANKE MAHAVIDYALAYA

MAJALGAON, DIST.BEED (MH)-431131

NAAC Re-Accredited "A" Grade



Feedback Analysis

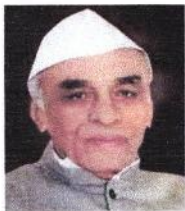
A REPORT ON THE STUDENT FEEDBACK ON CURRICULUM

ACADEMIC YEAR 2021 – 2022

Online feedback on curriculum collected from the students for the academic year 2021-2022 on various important aspects which include:

1. Fulfilment of my learning needs
2. Applicability of the curriculum to real life situations
3. Clarity about the course objectives
4. Weightage given to employability
5. Weightage given to skill development
6. Structure of the syllabus
7. Difficulty level of the course content
8. Promotion of independent thinking by curriculum
9. Exposure to new knowledge and practices
10. Weightage to practical /field work
11. Creation of interest to pursue higher education
12. Overall rating

1475 students participated in the survey consisting of 12 aspects/questions.



M.S.P.Mandal's
SUNDERRAO SOLANKE MAHAVIDYALAYA

MAJALGAON, DIST.BEED (MH)-431131

NAAC Re-Accredited "A" Grade



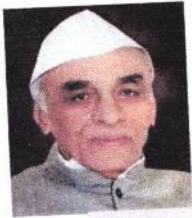
Feedback Analysis

Summary of Feedback

STUDENTS FEEDBACK ON CURRICULUM

ACADEMIC YEAR 2021 – 2022

Sr. NO	PARAMETERS	Excellent	Good	Average	Below Average
1	Fulfillment of my learning needs	769	589	92	25
2	Applicability of the curriculum to real life situations	607	650	170	48
3	Clarity about the course objectives	682	553	188	52
4	Weightage given to employability	603	626	183	63
5	Weightage given to skill development	655	598	177	45
6	Structure of the syllabus	649	608	163	55
7	Difficulty level of the course content	609	567	232	67
8	Promotion of independent thinking by curriculum	701	561	176	37
9	Exposure to new knowledge and practices	668	601	164	42
10	Weightage to practical /field work	663	598	169	45
11	Creation of interest to pursue higher education	735	551	154	35
12	Overall Rating	669	598	168	40
	TOTAL	1475			



M.S.P.Mandal's
SUNDERRAO SOLANKE MAHAVIDYALAYA

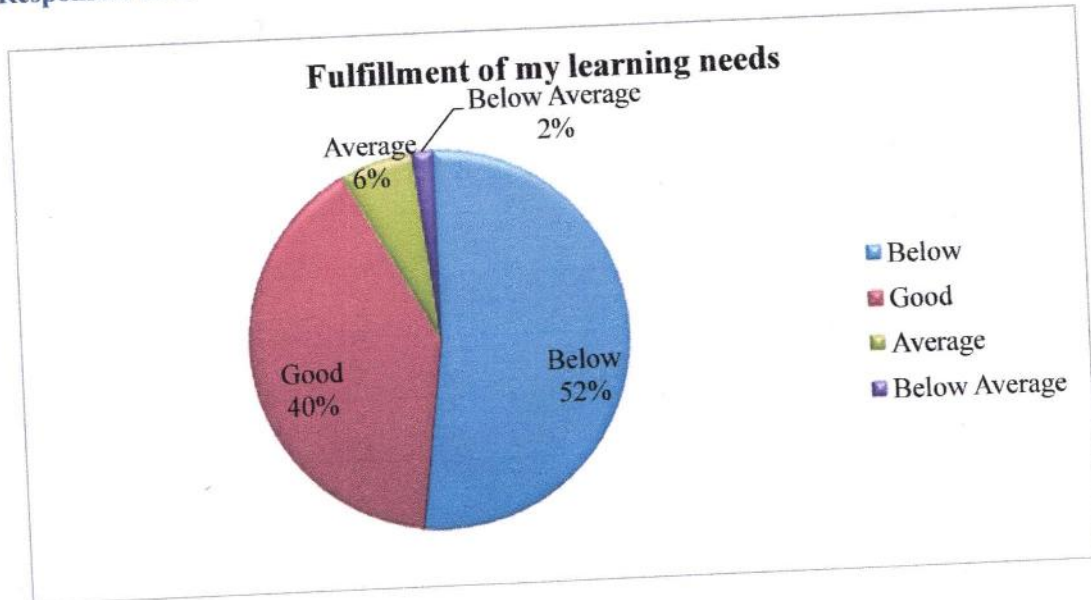
MAJALGAON, DIST.BEED (MH)-431131
NAAC Re-Accredited "A" Grade



Feedback Analysis

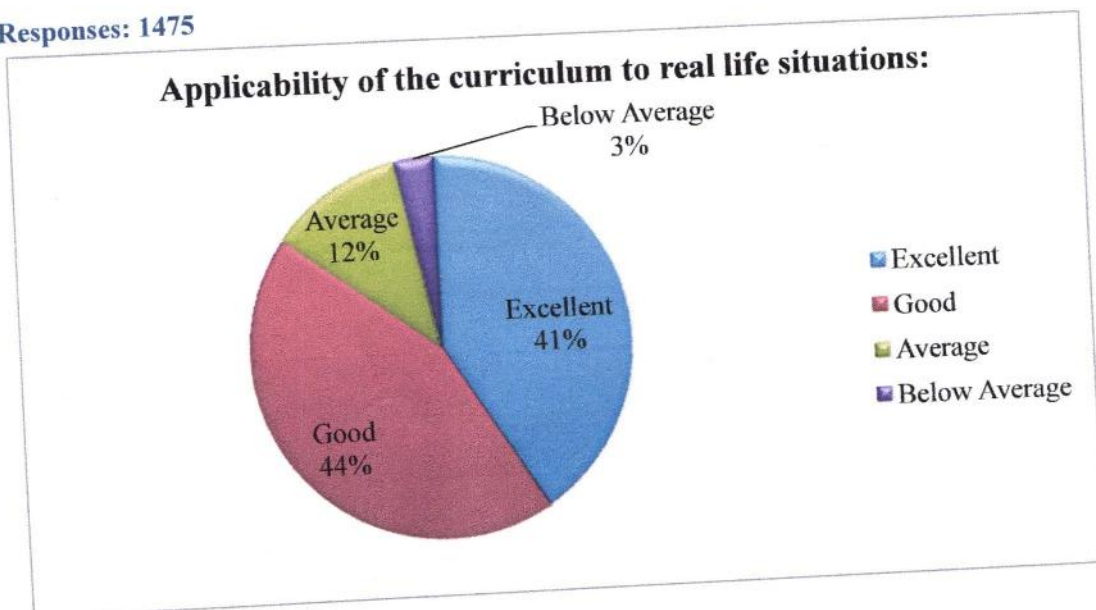
1. Fulfillment of my learning needs

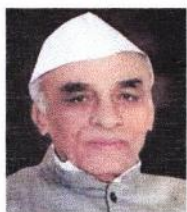
Responses: 1475



2. Applicability of the curriculum to real life situations

Responses: 1475

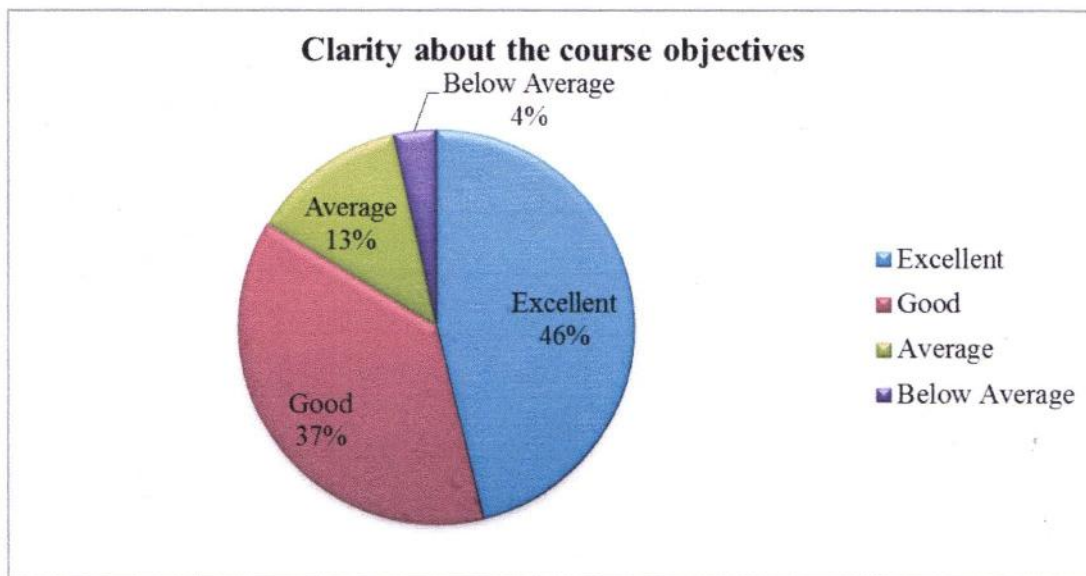




Feedback Analysis

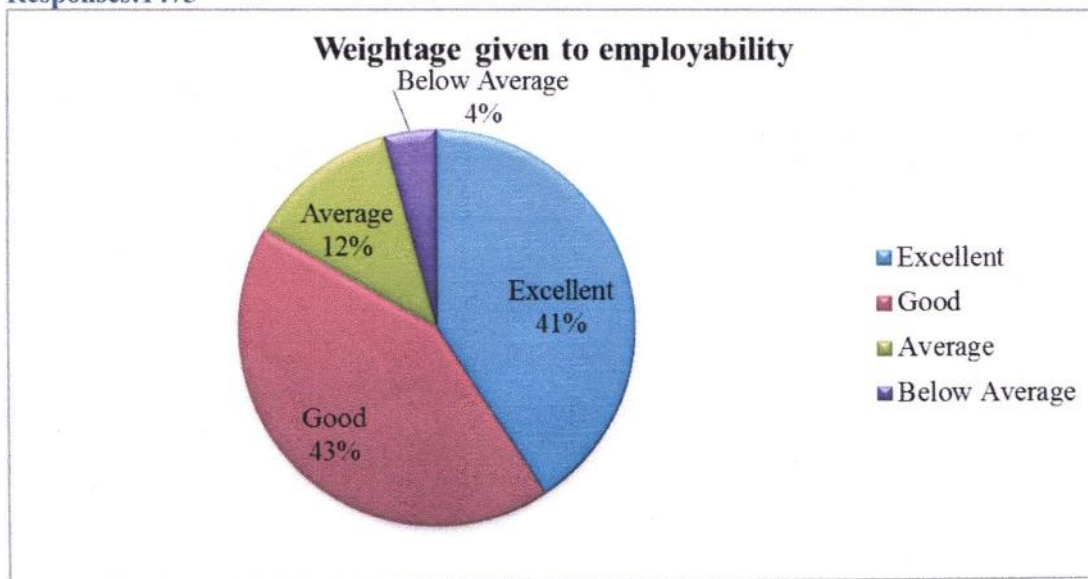
3. Clarity about the course objectives

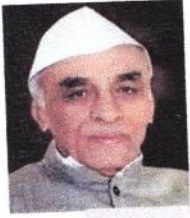
Responses: 1475



4. Weightage given to employability

Responses:1475



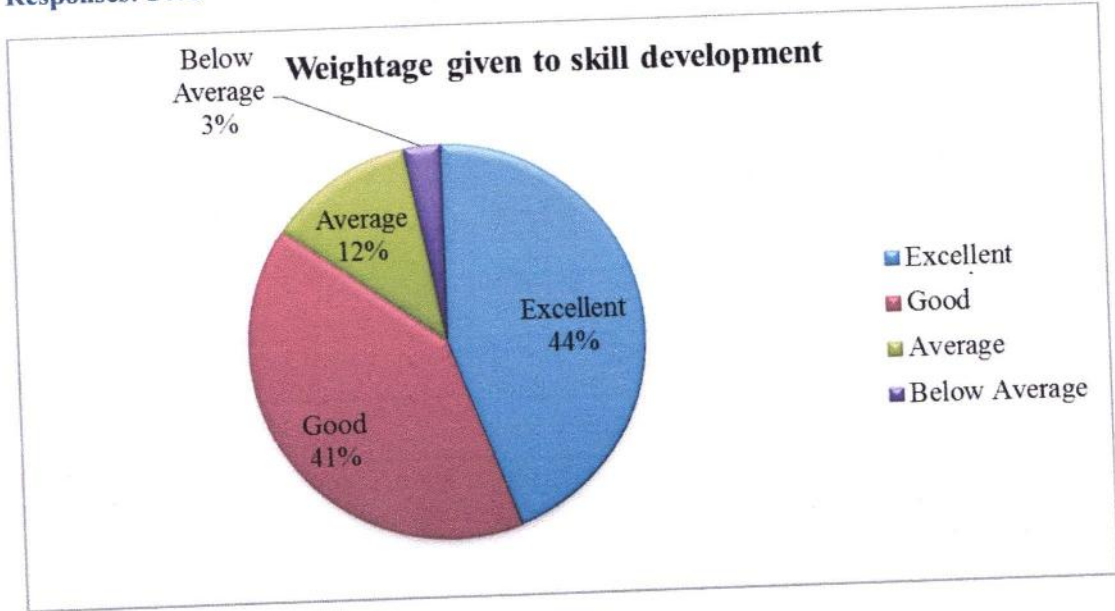


M.S.P.Mandal's
SUNDERRAO SOLANKE MAHAVIDYALAYA
MAJALGAON, DIST.BEED (MH)-431131
NAAC Re-Accredited "A" Grade
Feedback Analysis



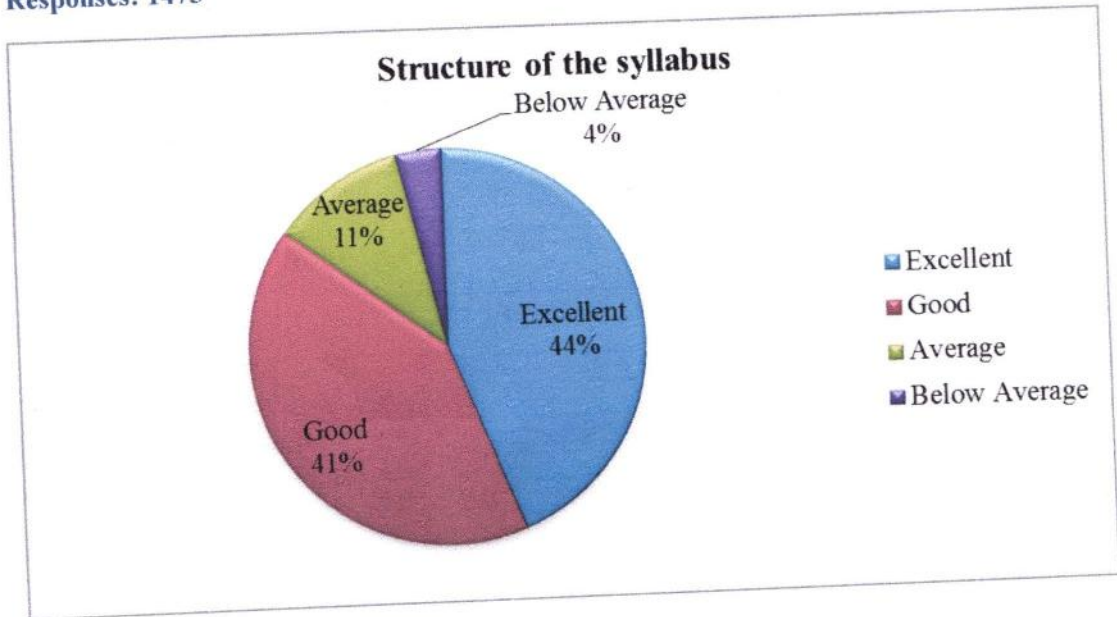
5. Weightage given to skill development

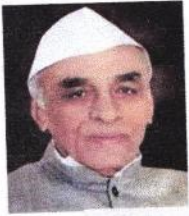
Responses: 1475



6. Structure of the syllabus

Responses: 1475



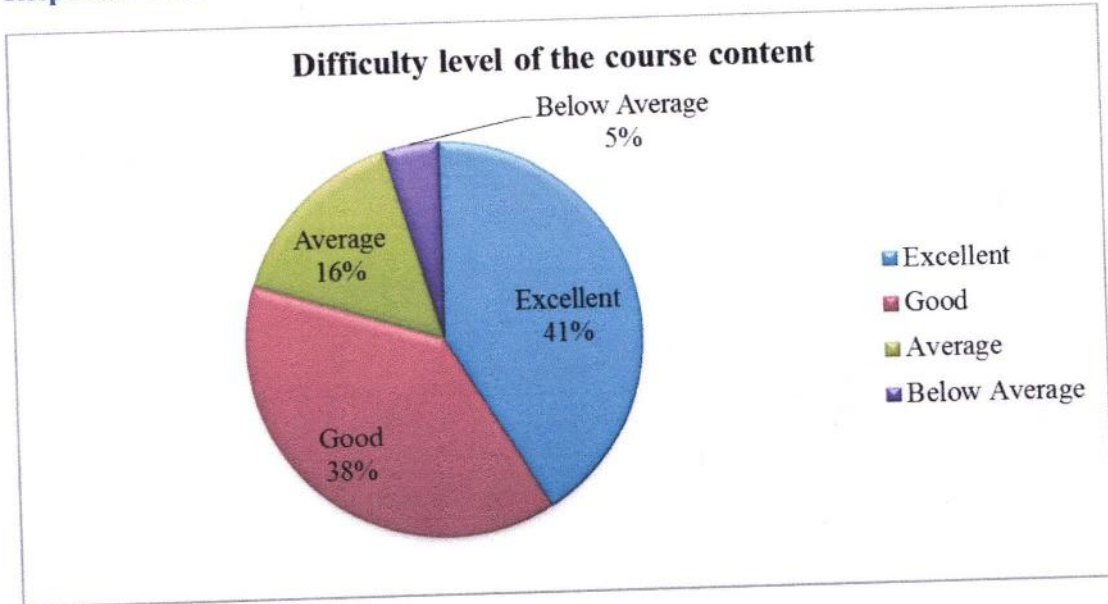


M.S.P.Mandal's
SUNDERRAO SOLANKE MAHAVIDYALAYA
MAJALGAON, DIST.BEED (MH)-431131
NAAC Re-Accredited "A" Grade
Feedback Analysis



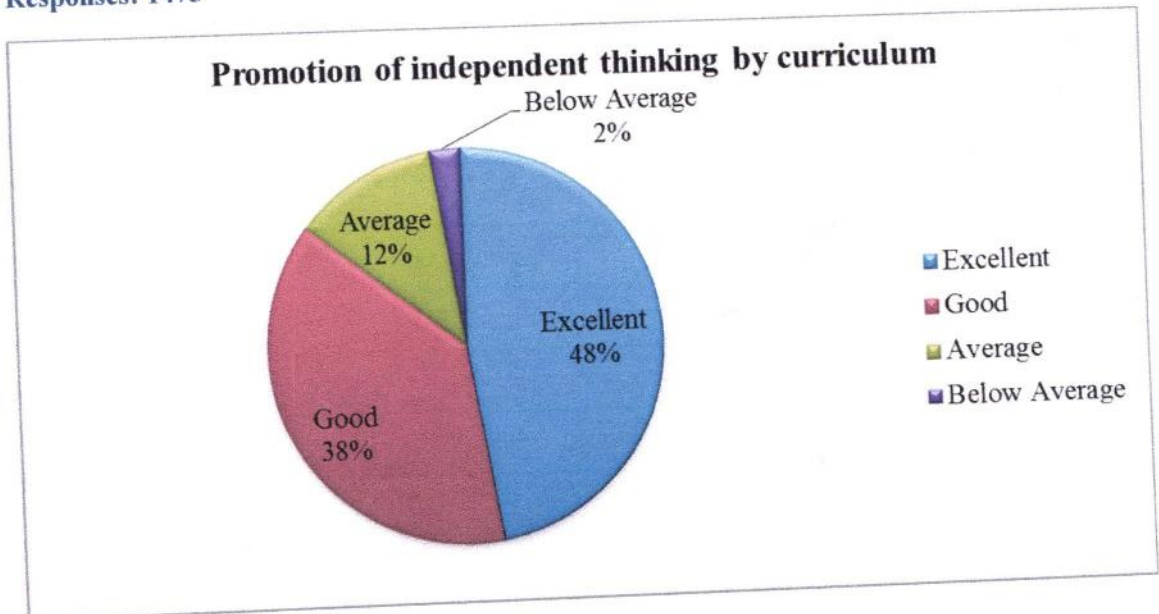
7. Difficulty level of the course content

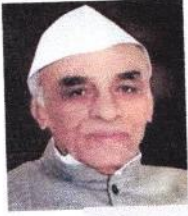
Responses: 1475



8. Promotion of independent thinking by curriculum

Responses: 1475



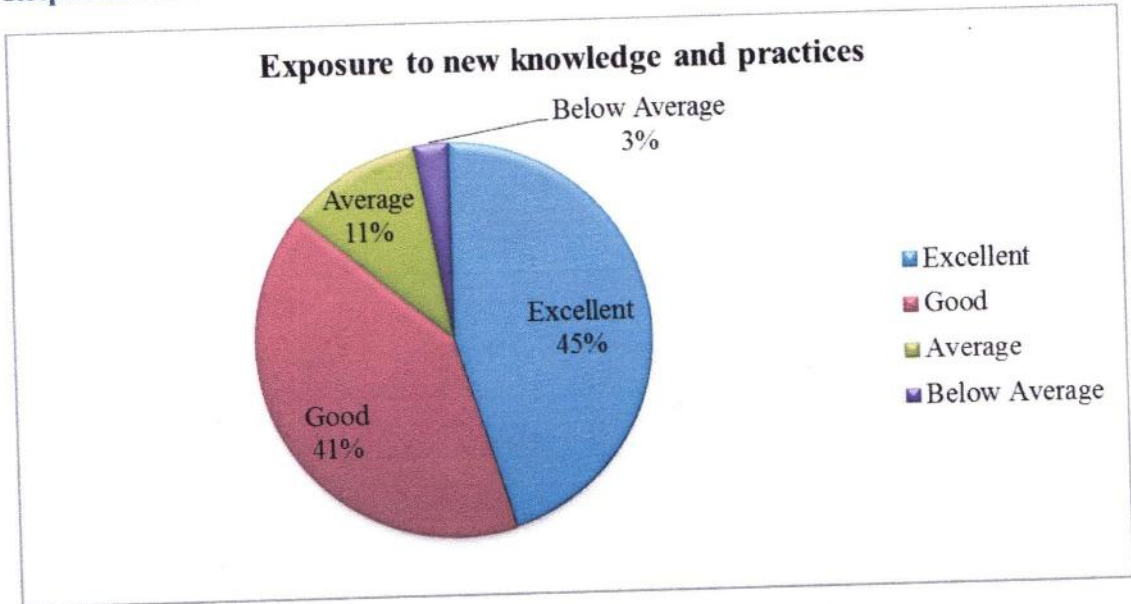


M.S.P.Mandal's
SUNDERRAO SOLANKE MAHAVIDYALAYA
MAJALGAON, DIST.BEED (MH)-431131
NAAC Re-Accredited "A" Grade
Feedback Analysis



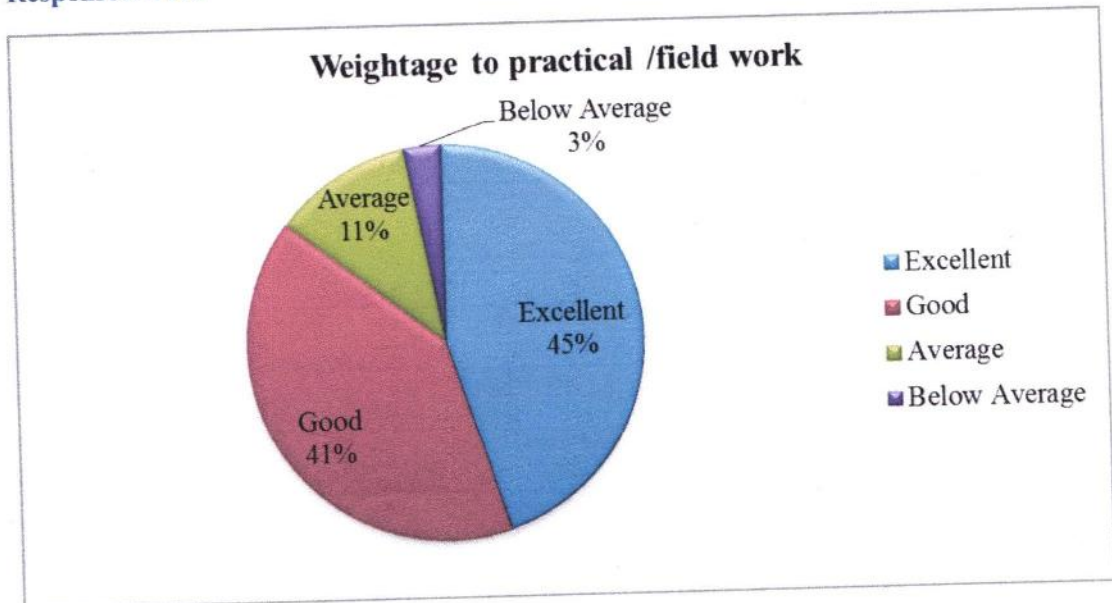
9. Exposure to new knowledge and practices

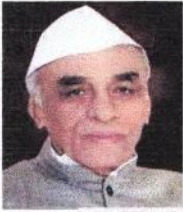
Responses: 1475



10. Weightage to practical /field work

Responses: 1475





M.S.P.Mandal's
SUNDERRAO SOLANKE MAHAVIDYALAYA

MAJALGAON, DIST.BEED (MH)-431131

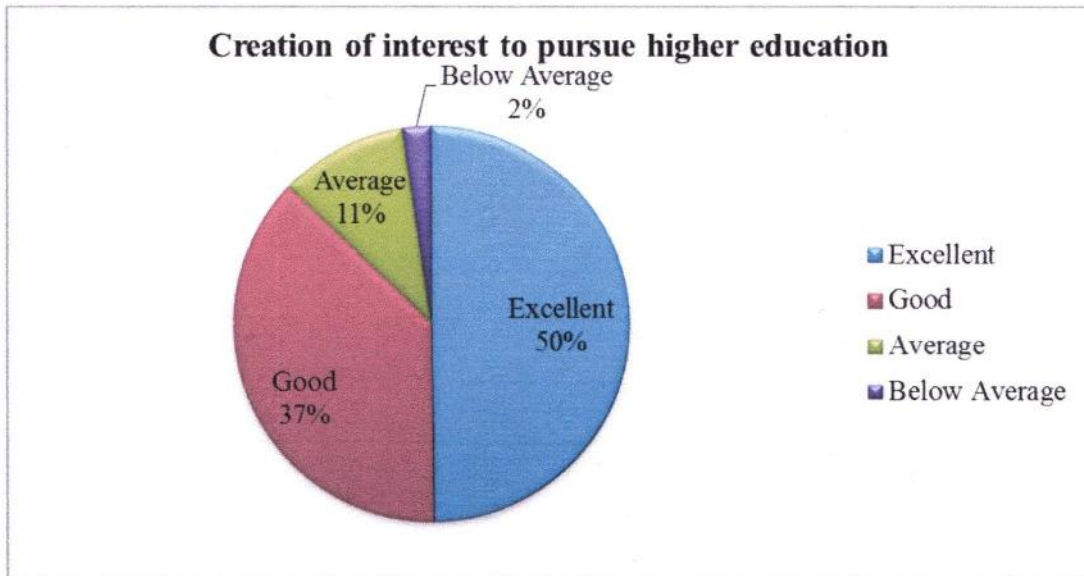
NAAC Re-Accredited "A" Grade



Feedback Analysis

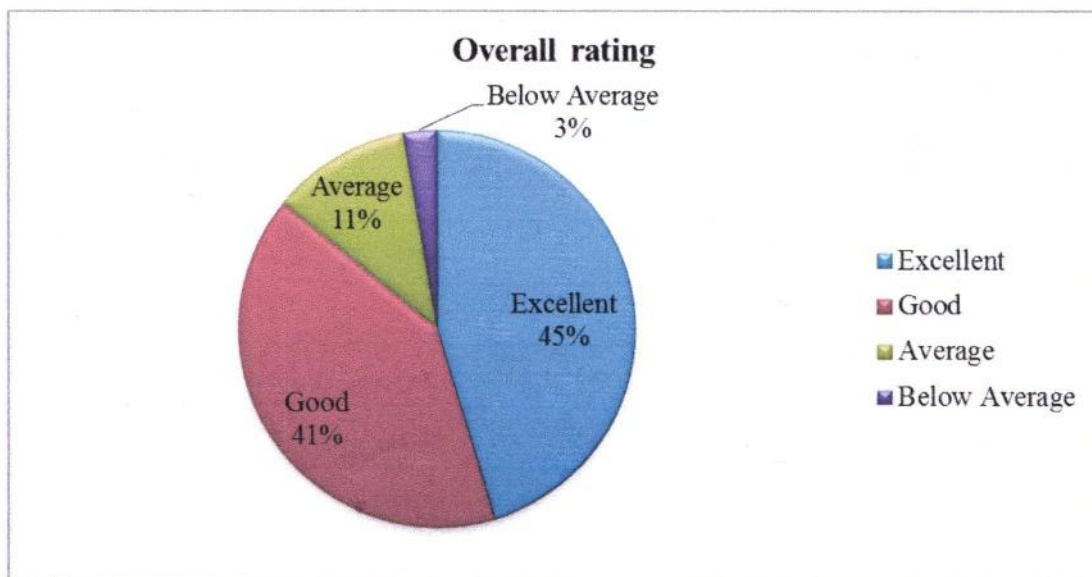
11. Creation of interest to pursue higher education

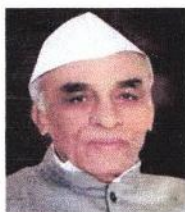
Responses: 1475



12. Overall rating

Responses: 1475





Feedback Analysis

Respondents Details:

A. Fulfillment of My (students) Learning Needs:

From the total 1475 student respondents, maximum (769) respondents rated as excellent in respect of fulfillment of their learning needs by curriculum, followed by 589 respondents, rated it as good, 92 respondents replied as average in this respect and 25 below average.

B. Application of the Curriculum to the Real Life Situation:

It is found that the 607 of student's respondent opined that the applicability of the curriculum to the real life situation found excellent, maximum (650) think as good, 170 replied as it is average while 48 mentioned as below average.

C. Clarity about the Course Objectives:

The highest (682) respondents from the total students noted that clarity about the course objectives in curriculum found excellent; followed by 553 remarked as good, 188 thinks it is average and 52 noted as below average.

D. Weightage Given to Employability:

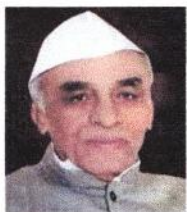
From the total 1475 respondents, 603 of student respondents opined that the Weightage given to employability in curriculum found excellent, 626 opined it is good, 183 rated it is average and 63 as below average.

E. Weightage Given to Skill Development:

It is found that the highest (655) number of respondents opined that the Weightage given to skill development in curriculum is found excellent. 598 thinks in this case as good, 177 opined as average, while 45 responded as below average.

F. Structure of the Syllabus:

The six aspect of the feedback is concerned with structure of the syllabus. The collected information indicate that the maximum number of respondents (649) found the structure of the syllabus in curriculum is excellent, followed by 608 says it is good, 163 opined as it is



M.S.P.Mandal's
SUNDERRAO SOLANKE MAHAVIDYALAYA
MAJALGAON, DIST.BEED (MH)-431131
NAAC Re-Accredited "A" Grade



Feedback Analysis

average and 55 below average.

I. Difficulty Level of the Course Contents:

From the total 1475 respondents, the maximum number of respondents 609 respondents rated as the difficulty level in the course contents in curriculum taught is found excellent, followed by 567 respondents rated to difficulty level of course content in curriculum is as good, 232 respondents says it is average while 67 responded as below average.

J. Promotion of independent Thinking by Curriculum:

It is observed that majority (701) of the students feel that promotion of independent thinking through curriculum taught is excellent, followed by 561 of them opined as good, 176 observed it is average. 67 students respondents rated as below average.

K. Exposure to New Knowledge and Practices:

From the total 1475 student's respondents, highest (668) of the respondents opined that the exposure to new knowledge and practices in curriculum taught found excellent. 601 think as good, 164 observed it is as average and 42 respondents opined as below average.

L. Weightage to Practical or field work:

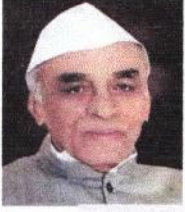
It is observed that the maximum (663) respondents think that Weightage to practical and field work in curriculum is found excellent. The 598 respondents remarked in this respect as good, 169 respondents says Weightage given to practical or field work in curriculum is average, 45 students think as below average.

M. Creation of Interest to Pursue Higher Education:

From the total 1475 respondents highest (735) opined that the creation of interest to pursue higher education from curriculum is found excellent, followed by 551 thinks that it is good, 154 says it is average while 35 respondents opined below average.

N. Overall rating:

It is found that maximum 669 students respondent rated to curriculum found excellent, 598 think it is good, 168 rated it as average, 40 students respondent as below average.



M.S.P.Mandal's
SUNDERRAO SOLANKE MAHAVIDYALAYA

MAJALGAON, DIST.BEED (MH)-431131

NAAC Re-Accredited "A" Grade



Feedback Analysis

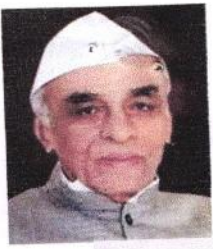
Conclusion:

The consolidated feedback report of Alumni is shared with the all HOD's / Coordinators / Officials of different departments for further appropriate action and decision making in this respect.

IQAC Coordinator
Coordinator
Internal Quality Assurance Cell (IQAC)
Sunderrao Solanke Mahavidyalaya,
Majalgaon, Dist.Beed (MS)

Principal
PRINCIPAL
Sunderrao Solanke Mahavidyalaya
Majalgaon Dist. Beed (M.S.)





M.S.P.Mandal's

SUNDERRAO SOLANKE MAHAVIDYALAYA

MAJALGAON, DIST.BEED (MH)-431131

NAAC Re-Accredited "A" Grade

Feedback Analysis



Marathwada Shikshan Prasarak Mandal's

Sunderrao Solanke Mahavidyalaya, Majalgaon

Dist. Beed



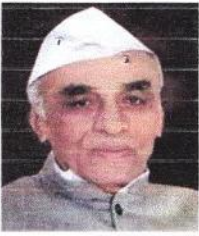
INTERNAL QUALITY ASSURANCE CELL



FEEDBACK ANALYSIS

EMPLOYER FEEDBACK ON CURRICULUM

2021-2022



M.S.P.Mandal's

SUNDERRAO SOLANKE MAHAVIDYALAYA

MAJALGAON, DIST.BEED (MH)-431131

NAAC Re-Accredited "A" Grade



Feedback Analysis

A REPORT ON THE EMPLOYER FEEDBACK ON CURRICULUM

ACADEMIC YEAR 2021 – 2022

Online feedback on curriculum collected from the employer for the academic year 2021-2022

on various important aspects which include:

1. Weightage given to Employability / Skill development
2. Fulfillment of demands at Our work place
3. Inclusion of Course content suitable to my Industry
4. Relevance to Current Knowledge and information
5. Depth of the Course Content
6. Communication / Presentation Skill Development
7. Promotion to Independent thinking
8. Incorporation of Components of Managerial / Leadership abilities
9. Promotion of development of human resources
10. Importance given to learning values
11. Overall rating

07 employers participated in the survey consisting of 11 aspects/questions.



M.S.P.Mandal's
SUNDERRAO SOLANKE MAHAVIDYALAYA
 MAJALGAON, DIST.BEED (MH)-431131
 NAAC Re-Accredited "A" Grade



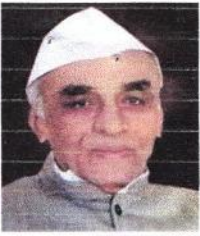
Feedback Analysis

Summary of Feedback

EMPLOYERS FEEDBACK ON CURRICULUM

ACADEMIC YEAR 2021 – 2022

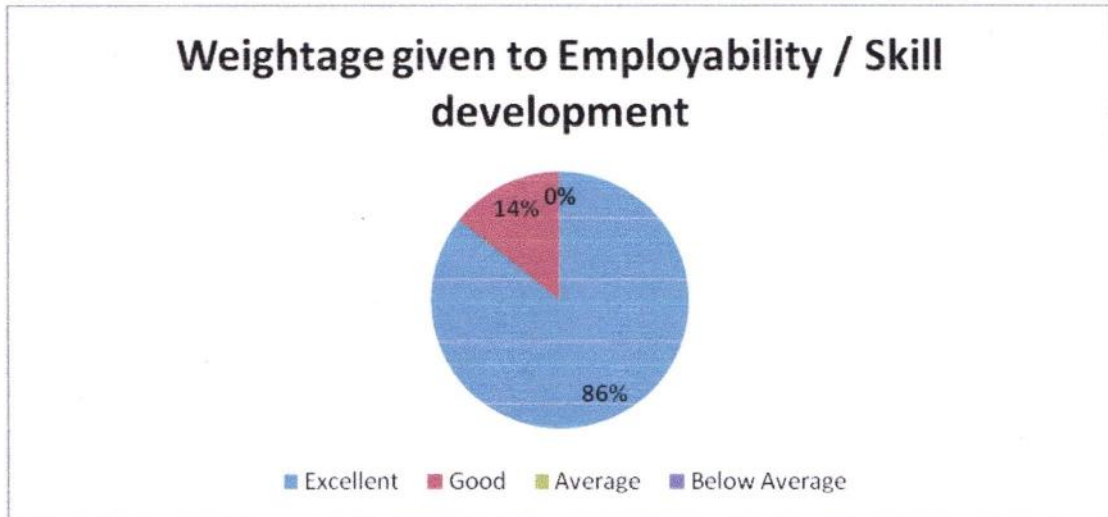
Sr. NO.	PARAMETERS	Excellent	Good	Average	Below Average
1	Weightage given to Employability / Skill development	6	1	0	0
2	Fulfillment of demands at Our work place	4	2	1	0
3	Inclusion of Course content suitable to my Industry	3	4	0	0
4	Relevance to Current Knowledge and information	3	4	0	0
5	Depth of the Course Content	2	5	0	0
6	Communication / Presentation Skill Development	4	3	0	0
7	Promotion to Independent thinking	4	2	1	0
8	Incorporation of Components of Managerial / Leadership abilities	2	5	0	0
9	Promotion of development of human resources	4	3	0	0
10	Importance given to learning values	4	3	0	0
11	Overall rating	4	3	0	0



Feedback Analysis

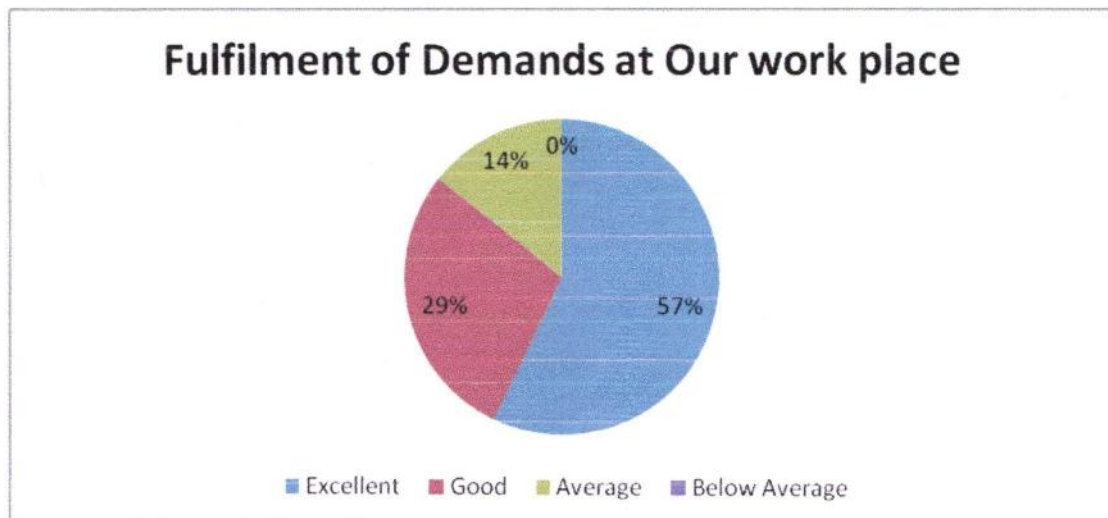
1. Weightage given to Employability / Skill development

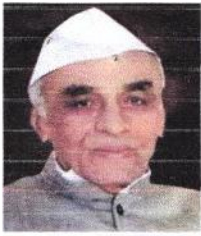
Responses: 07



2. Fulfilment of Demands at Our work place

Responses: 07





M.S.P.Mandal's
SUNDERRAO SOLANKE MAHAVIDYALAYA

MAJALGAON, DIST.BEED (MH)-431131

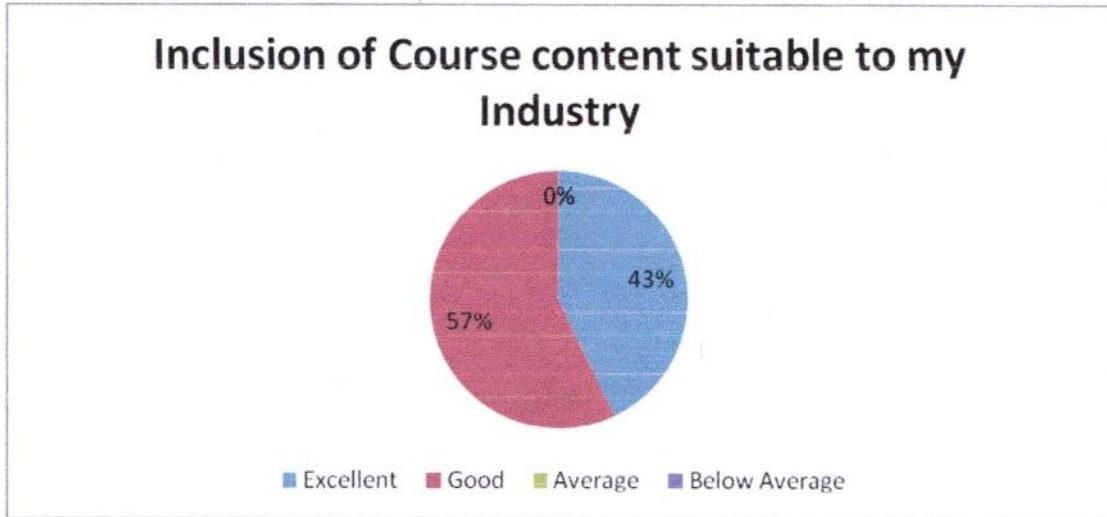
NAAC Re-Accredited "A" Grade



Feedback Analysis

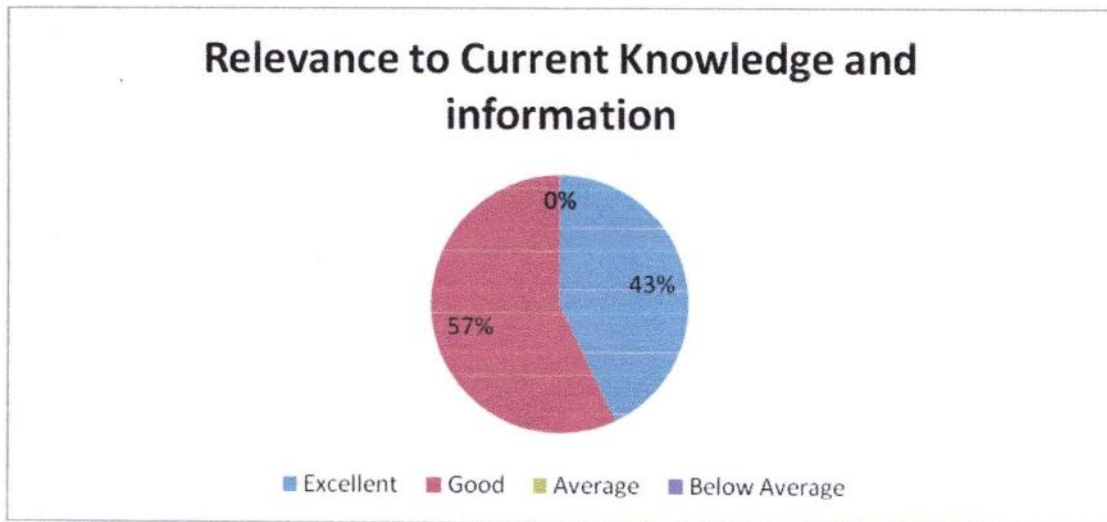
3. Inclusion of Course content suitable to my Industry

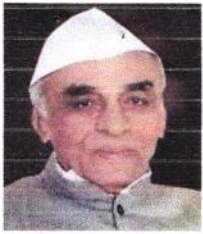
Responses: 07



4. Relevance to Current Knowledge and information

Responses: 07





M.S.P.Mandal's
SUNDERRAO SOLANKE MAHAVIDYALAYA

MAJALGAON, DIST.BEED (MH)-431131

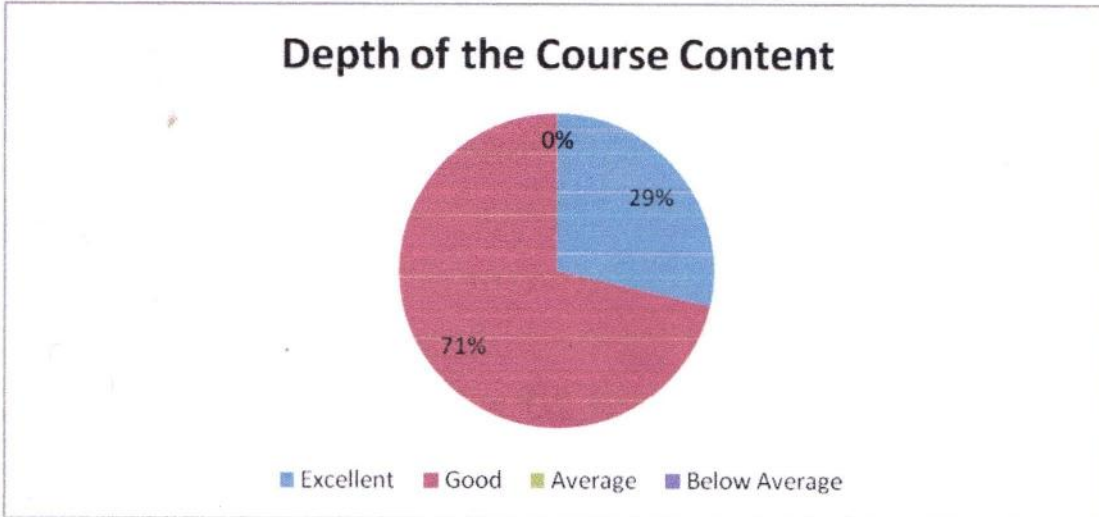
NAAC Re-Accredited "A" Grade



Feedback Analysis

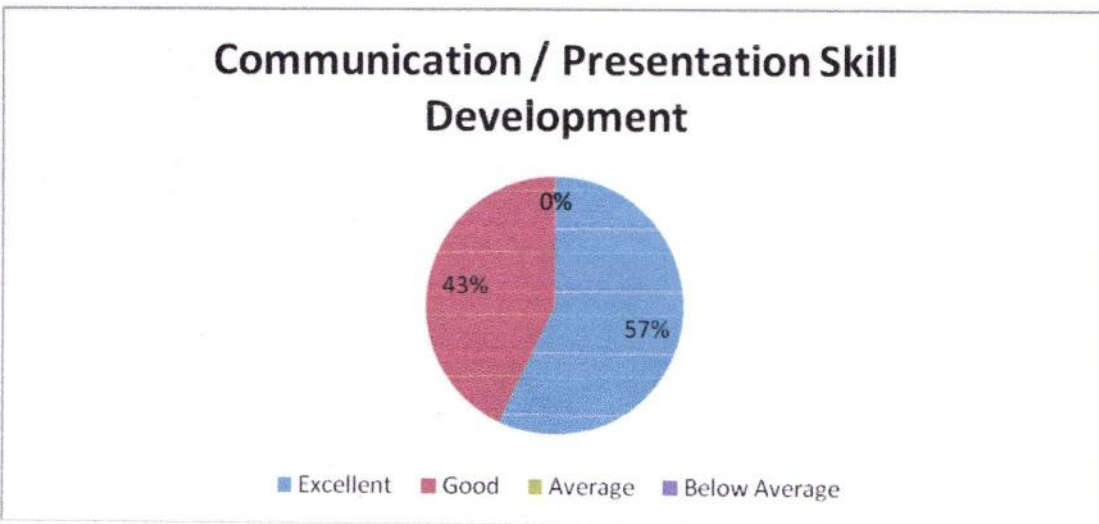
5. Depth of the Course Content

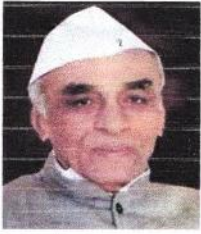
Responses: 07



6. Communication / Presentation Skill Development

Responses: 07

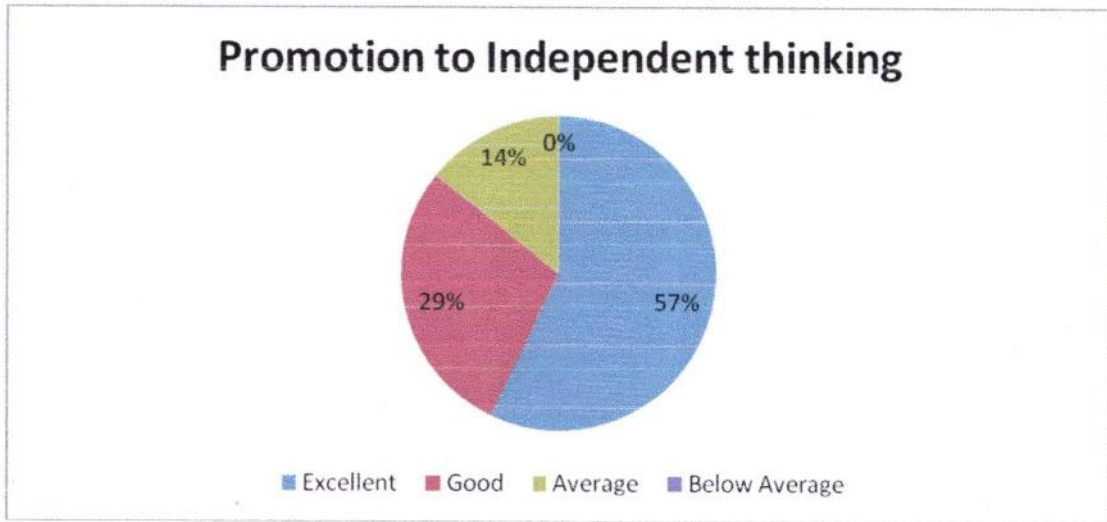




Feedback Analysis

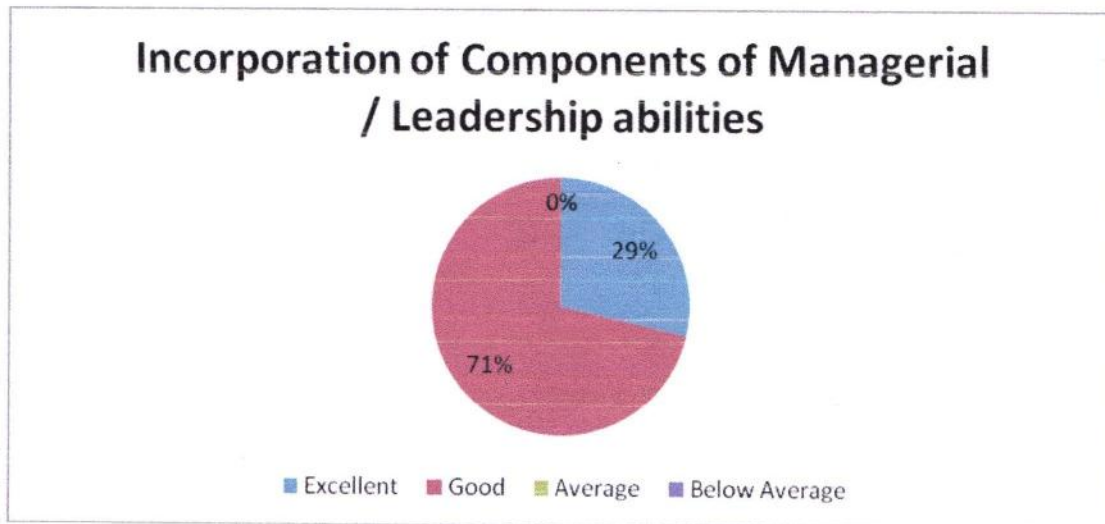
7. Promotion to Independent thinking

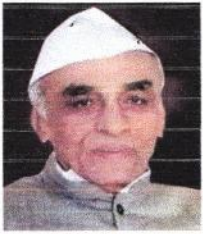
Responses: 07



8. Incorporation of Components of Managerial / Leadership abilities

Responses: 07

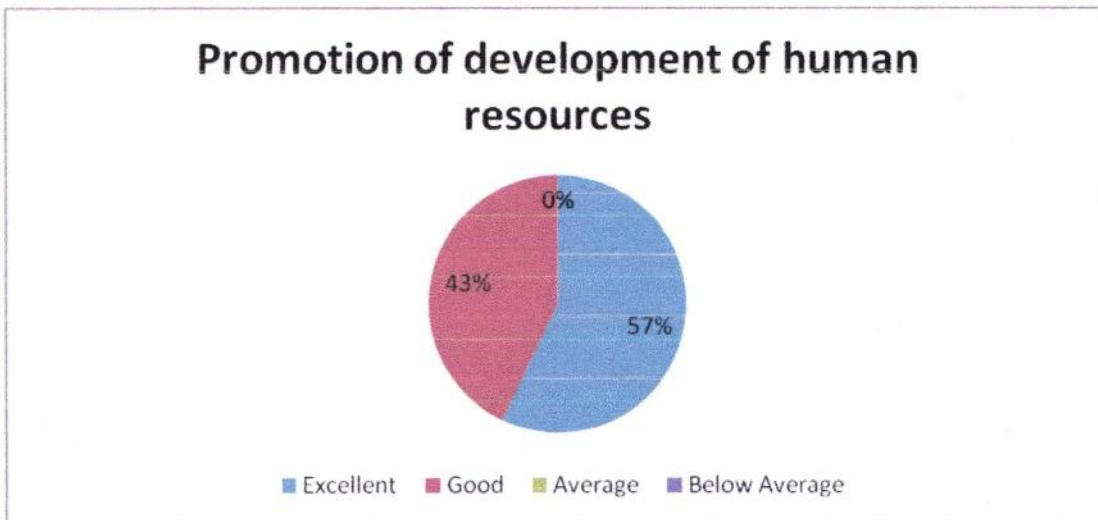




Feedback Analysis

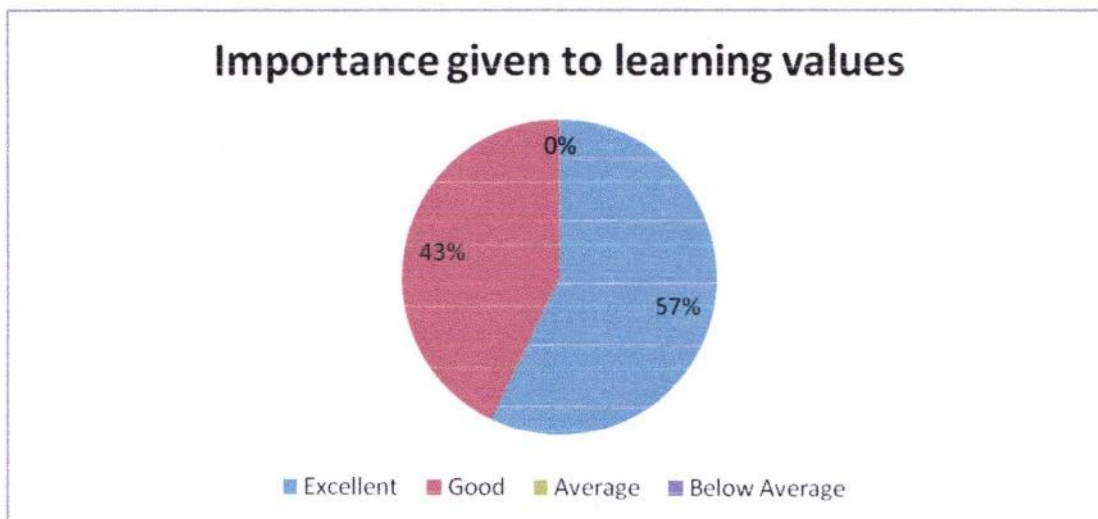
9. Promotion of development of human resources

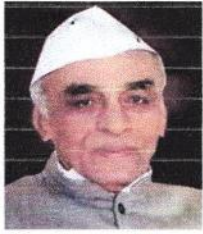
Responses: 07



10. Importance given to learning values

Responses: 07

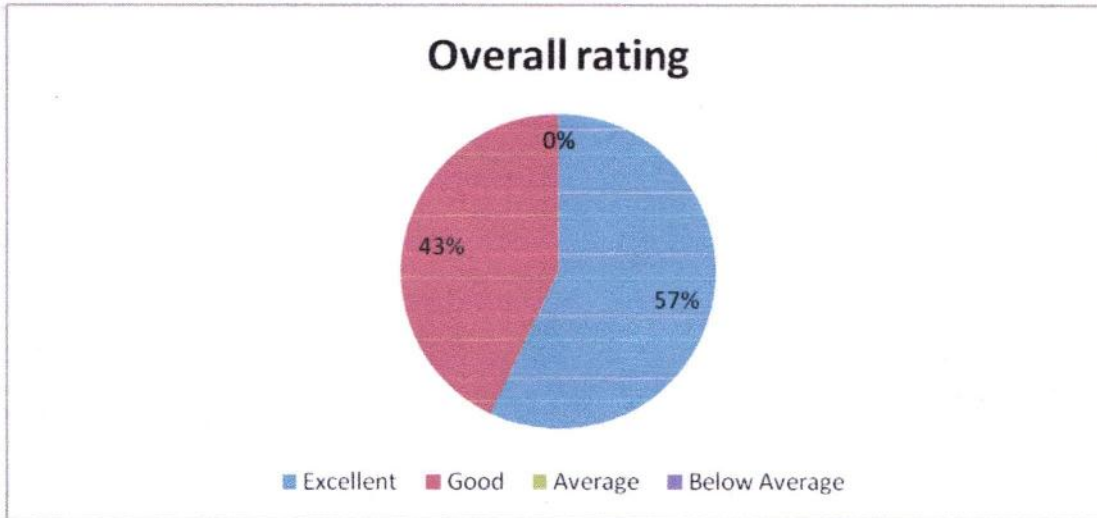


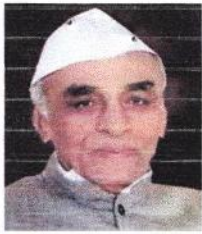


Feedback Analysis

11. Overall rating

Responses: 07





M.S.P.Mandal's
SUNDERRAO SOLANKE MAHAVIDYALAYA

MAJALGAON, DIST.BEED (MH)-431131

NAAC Re-Accredited "A" Grade



Feedback Analysis

Respondents Details:

A. Weightage given to Employability / Skill development

From the total 7 employer respondents, maximum 6 respondents rated as excellent in respect of Weightage given to Employability / Skill development followed, by 1 respondent, rated it as good

B. Fulfillment of demands at Our work place

It is found that the maximum 4 of employers respondent opined that the Fulfilment of demands at Our work place found excellent, 2 think as good, 1 replied as it is average.

C. Inclusion of Course content suitable to my Industry

The 3 respondents from the total employers noted that clarity about the course objectives in curriculum found excellent; followed by 4 remarked as good.

D. Relevance to Current Knowledge and information

From the total 7 respondents, 3 of respondents opined that the relevance to Current Knowledge and information found excellent and 4 opined it is good.

E. Depth of the Course Content

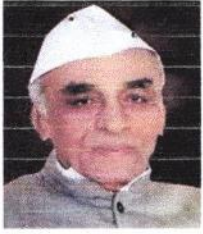
It is found that the 2 number of employers opined that the depth of the Course Content is found excellent. 5 employers thinks in this case as good.

F. Communication / Presentation Skill Development

The collected information indicate that the maximum number of respondents (4) found the Communication / Presentation Skill Development excellent, followed by 3 says it is good.

G. Promotion to Independent thinking

From the total 7 respondents, the maximum number of respondents, 4 respondents rated as the Promotion to Independent thinking is found excellent, followed by 2 respondents rated to Promotion to Independent thinking is as good, 1 respondents says it is average.



M.S.P.Mandal's
SUNDERRAO SOLANKE MAHAVIDYALAYA

MAJALGAON, DIST.BEED (MH)-431131

NAAC Re-Accredited "A" Grade



Feedback Analysis

H. Incorporation of Components of Managerial / Leadership abilities

It is observed that 2 of the employers feel that promotion of. Incorporation of Components of Managerial / Leadership abilities is excellent, followed by majority (5) of them opined as good.

I. Promotion of development of human resources

From the total 7 employer's respondents, highest (4) of the respondents opined that promotion of development of human resources found excellent. 3 think as good.

J. Importance given to learning values

From the total 7 respondents highest (4) opined that the. Importance given to learning values is found excellent, followed by 3 thinks that it is good.

K. Overall rating

It is found that maximum 4 of employers rated to excellent, 3 think it is good.

Conclusion:

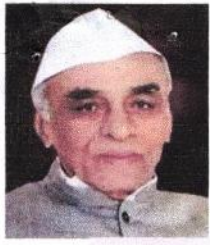
The consolidated feedback report of employers is shared with the all HOD's / Coordinators / Officials of different departments for further appropriate action and decision making in this respect.


IQAC Coordinator
Coordinator

Internal Quality Assurance Cell (IQAC)
Sunderrao Solanke Mahavidyalaya,
Majalgaon, Dist.Beed (MS)




PRINCIPAL
Sunderrao Solanke Mahavidyalaya
Majalgaon Dist. Beed (M.S.)



M.S.P.Mandal's
SUNDERRAO SOLANKE MAHAVIDYALAYA
MAJALGAON, DIST.BEED (MH)-431131
NAAC Re-Accredited "A" Grade
Feedback Analysis



Marathwada Shikshan Prasarak Mandal's
Sunderrao Solanke Mahavidyalaya, Majalgaon
Dist. Beed

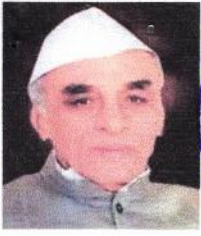


INTERNAL QUALITY ASSURANCE CELL



FEEDBACK ANALYSIS
TEACHER FEEDBACK ON CURRICULUM

2021-2022



M.S.P.Mandal's

SUNDERRAO SOLANKE MAHAVIDYALAYA

MAJALGAON, DIST.BEED (MH)-431131

NAAC Re-Accredited "A" Grade

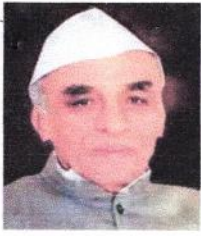
Feedback Analysis

A REPORT ON TEACHER FEEDBACK ON CURRICULUM ACADEMIC YEAR 2021-2022

Online feedback on curriculum collected from the employer for the academic year 2021-2022 on various important aspects which include:

1. Applicability of the syllabus to local developmental needs
2. Difficulty level of the syllabus
3. Clarity about the course objectives
4. Weightage given to employability
5. Depth of the course content
6. Incorporation of latest knowledge & information
7. Research Possibilities
8. Mechanism used for development/ revision of curriculum by BoS
9. Weightage given to learning values like knowledge, skills, analytical abilities, etc.
10. Relevance of course outcomes
11. Quality and clarity of textual/ study/ reference material suggested
12. Overall rating

39 Teachers participated in the survey consisting of 12 aspects/questions on Curriculum



M.S.P.Mandal's

SURESHRAO SOLANKE MAHAVIDYALAYA

MAJALGAON, DIST.BEED (MH)-431131

NAAC Re-Accredited "A" Grade

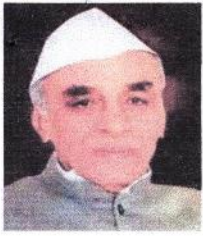
Feedback Analysis

Summary of Feedback

TEACHERS FEEDBACK ON CURRICULUM

ACADEMIC YEAR 2021-2022

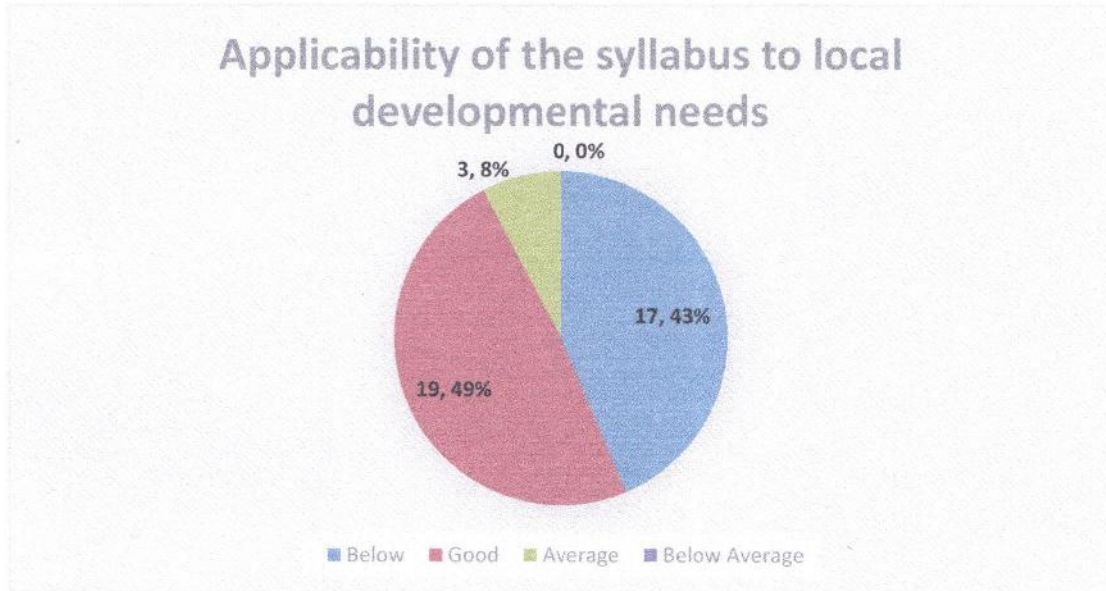
Sr. NO.	PARAMETERS	Excell ent	Go od	Aver age	Below Average
1	Applicability of the syllabus to local developmental needs	17	19	3	0
2	Difficulty level of the syllabus	11	23	5	0
3	Clarity about the course objectives	21	16	2	0
4	Weightage given to employability	16	18	5	0
5	Depth of the Course Content	17	19	3	0
6	Incorporation of latest knowledge & information	19	16	4	0
7	Research Possibilities	13	19	6	1
8	Mechanism used for development/ revision of curriculum by BoS	13	19	7	0
9	Weightage given to learning values like knowledge, skills, analytical abilities, etc.	21	15	3	0
10	Relevance of course outcomes	11	25	3	0
11	Quality and clarity of textual/ study/ reference material suggested	14	23	2	0
12	Overall rating	19	20	0	0



Feedback Analysis

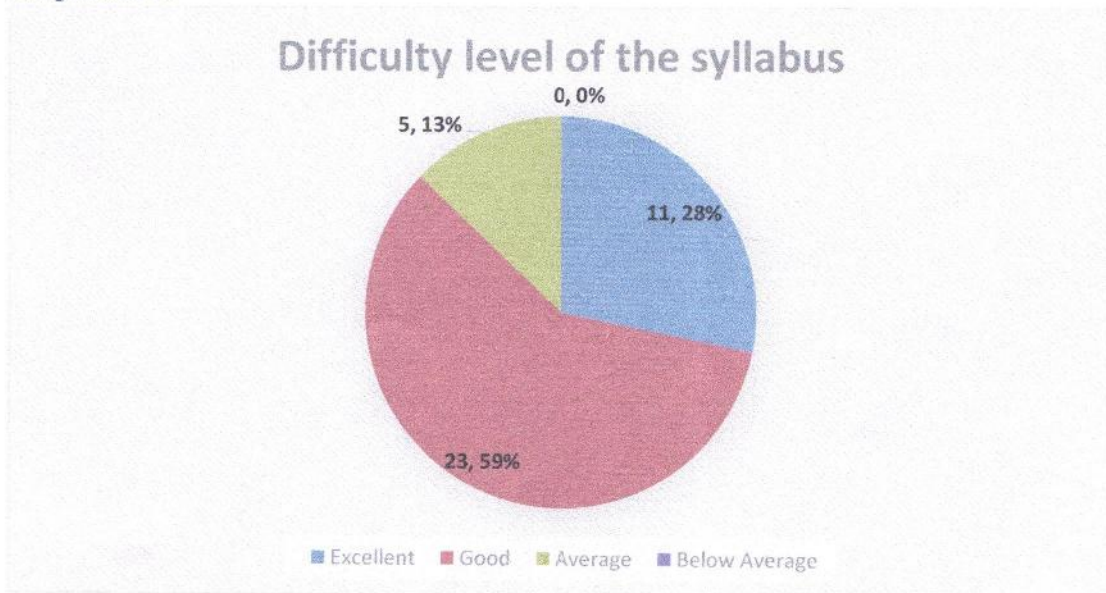
1. Applicability of the syllabus to local developmental needs

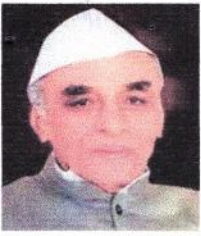
Responses:39



2. Difficulty level of the syllabus

Responses: 39

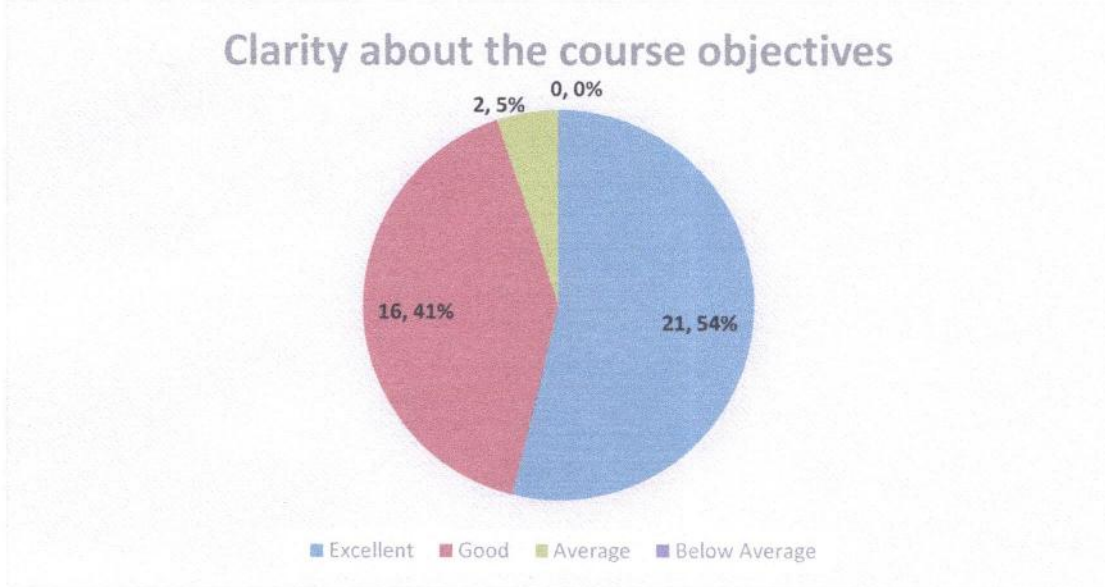




Feedback Analysis

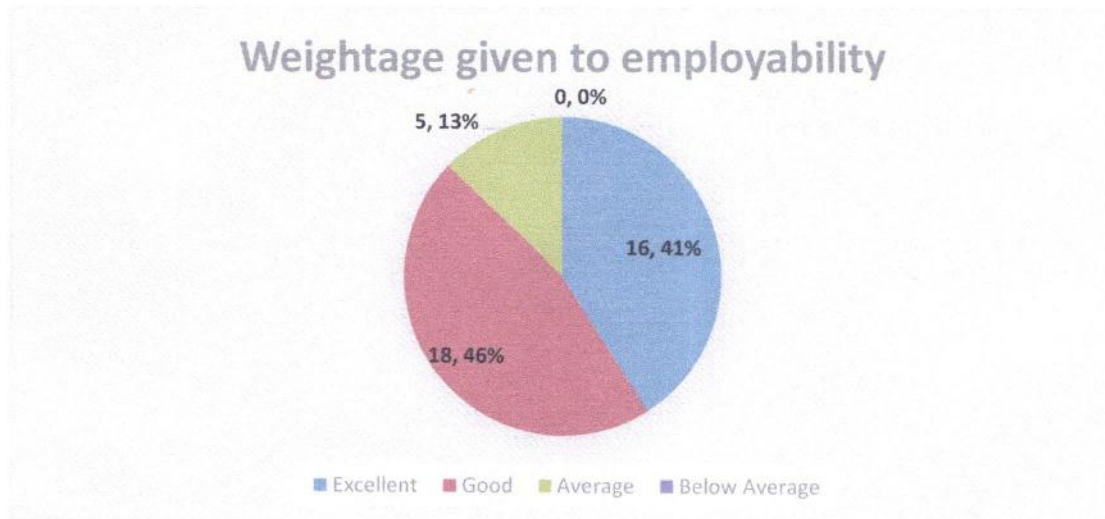
3. Clarity about the course objectives

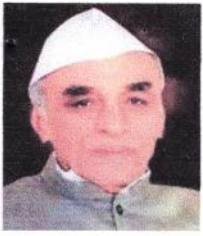
Responses: 39



4. Weightage given to employability

Responses: 39

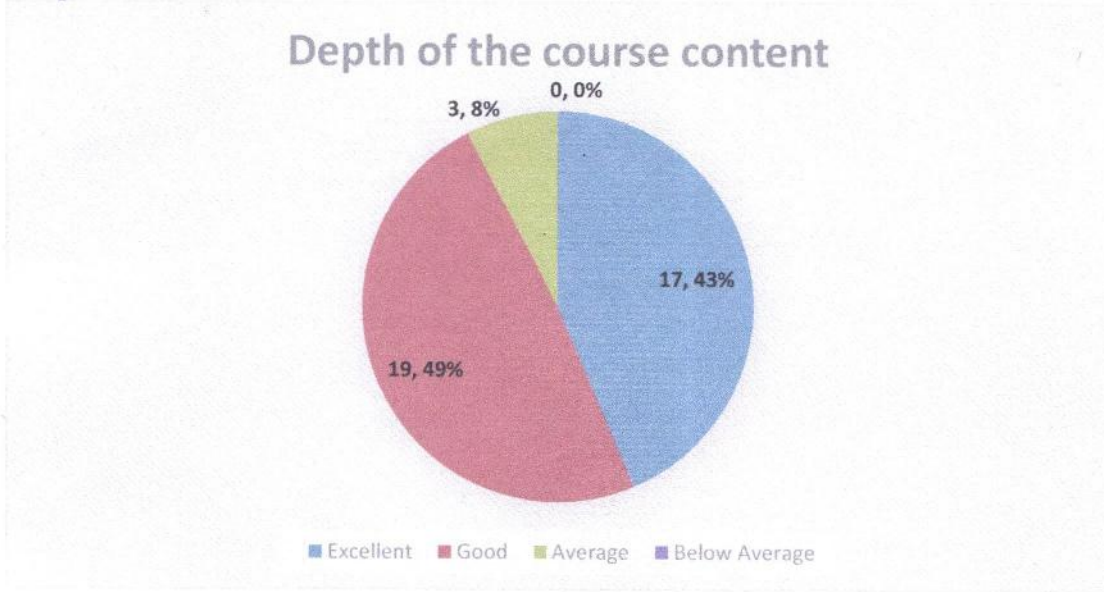




Feedback Analysis

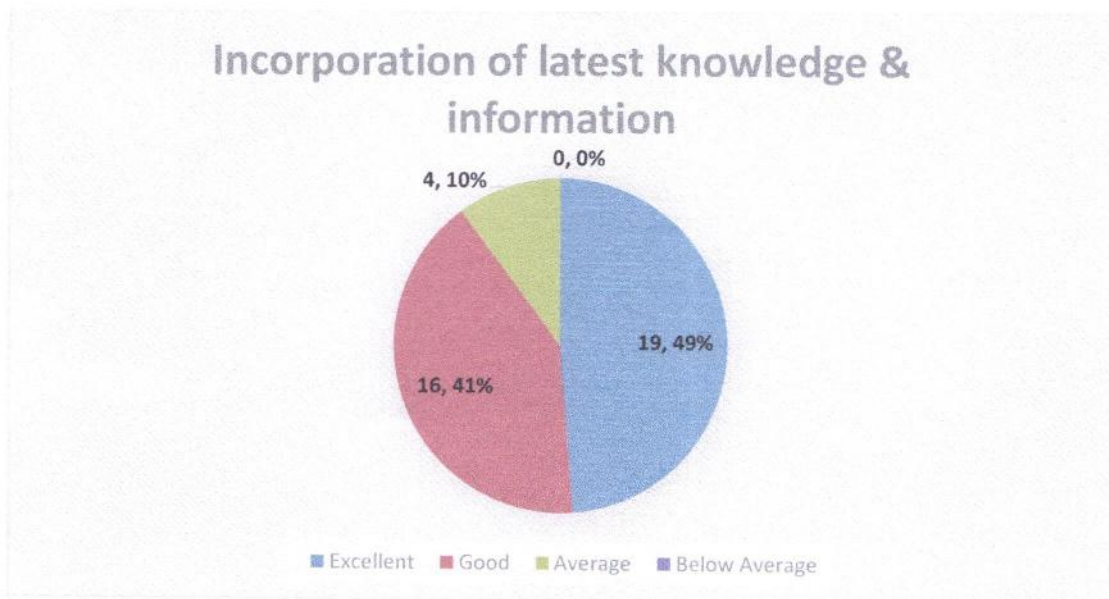
5. Depth of the Course Content

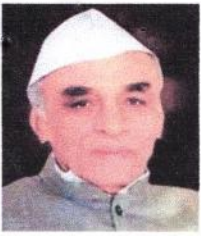
Responses:39



6. Incorporation of latest knowledge & information

Responses:39

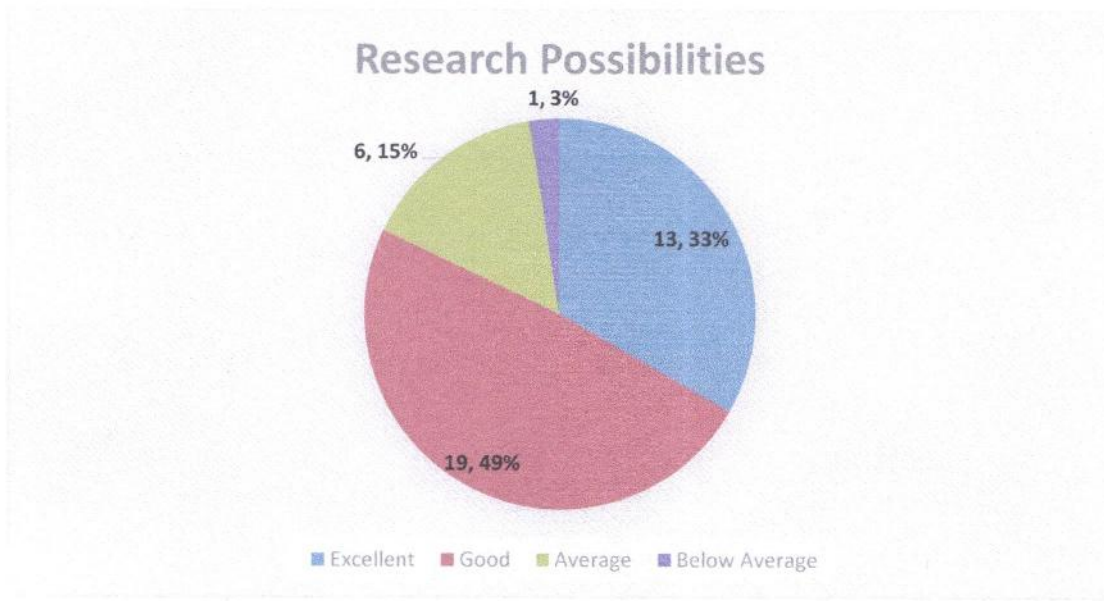




Feedback Analysis

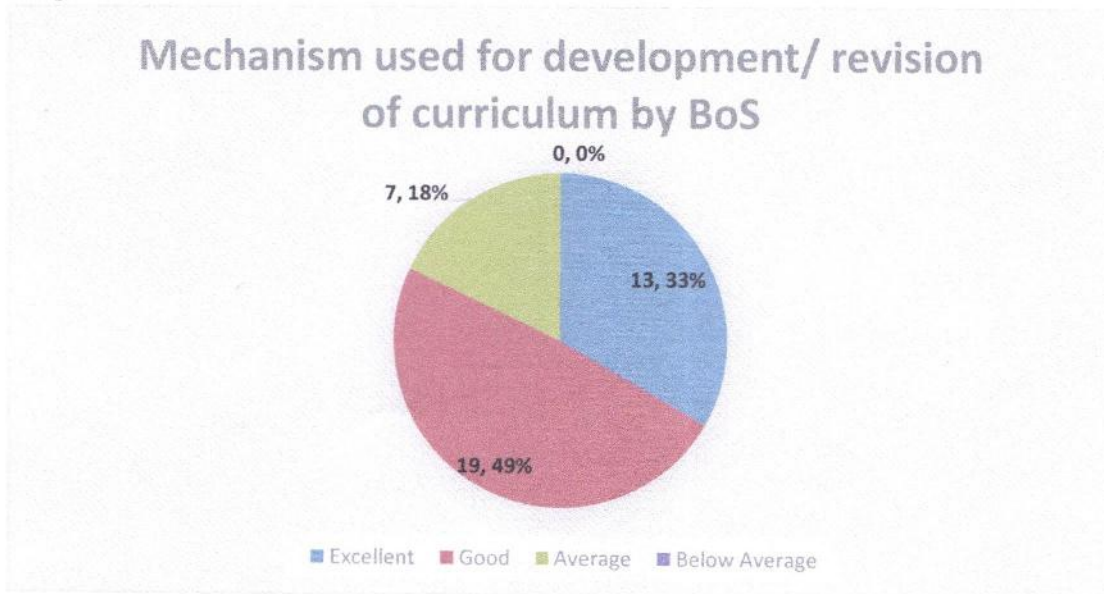
7. Research Possibilities

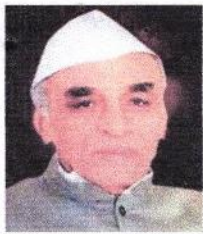
Responses:39



8. Mechanism used for development/ revision of curriculum by BoS

Responses:39

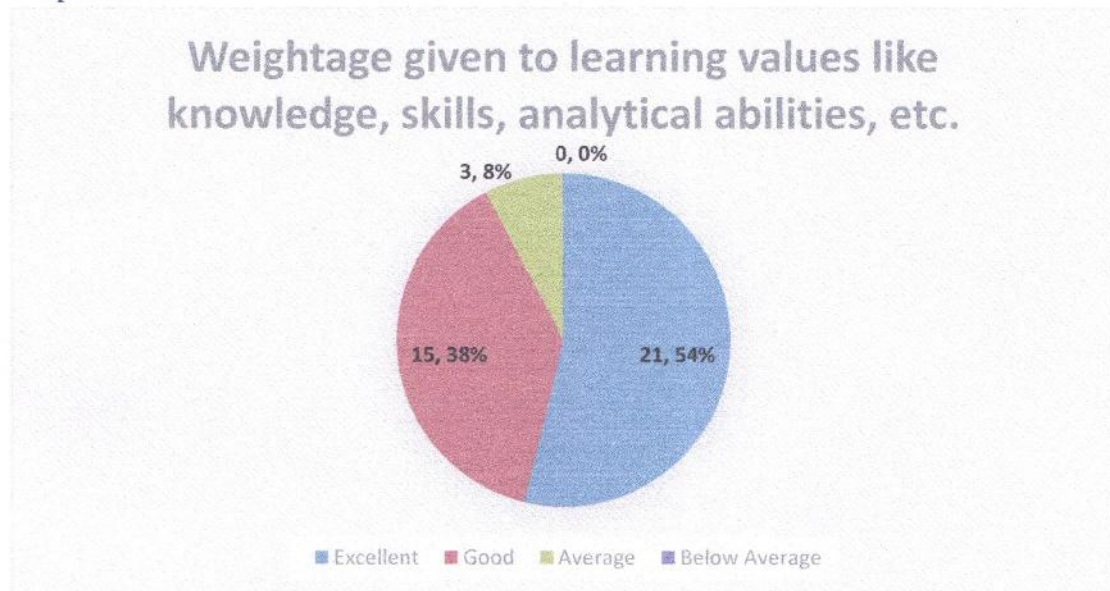




Feedback Analysis

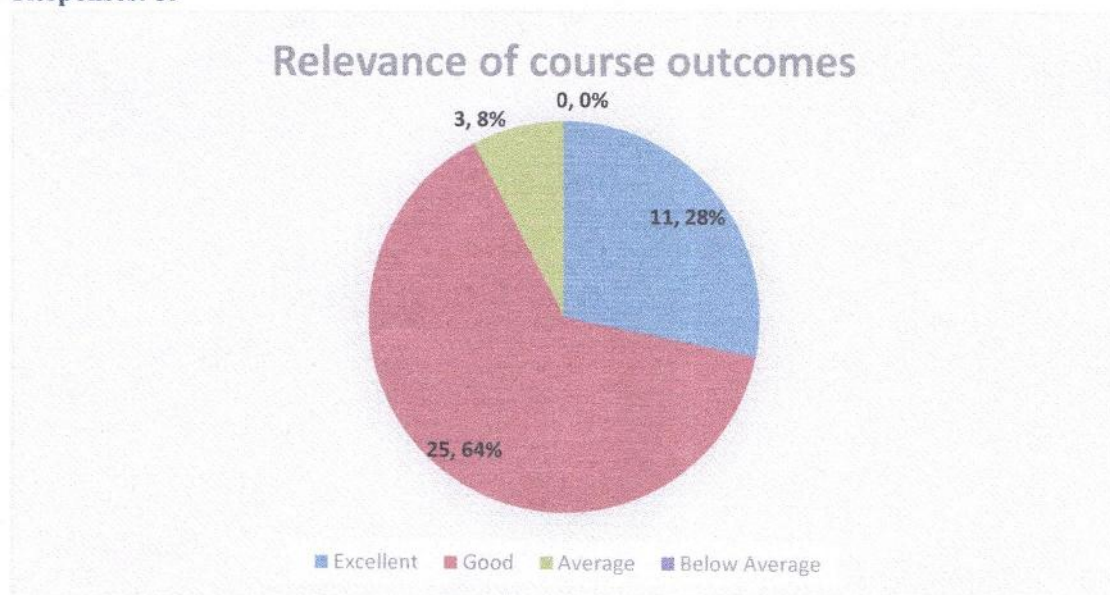
9. Weightage given to learning values like knowledge, skills, analytical abilities, etc.

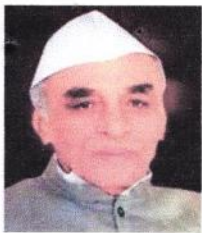
Responses:39



10. Relevance of course outcomes

Responses: 39





M.S.P.Mandal's
SUNDERRAO SOLANKE MAHAVIDYALAYA

MAJALGAON, DIST.BEED (MH)-431131

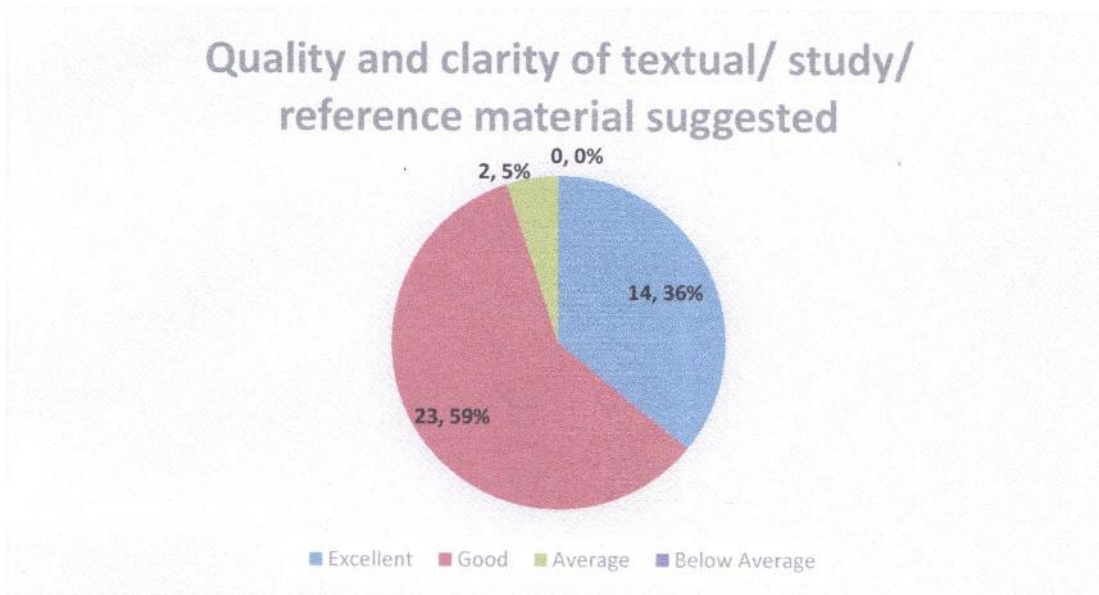
NAAC Re-Accredited "A" Grade



Feedback Analysis

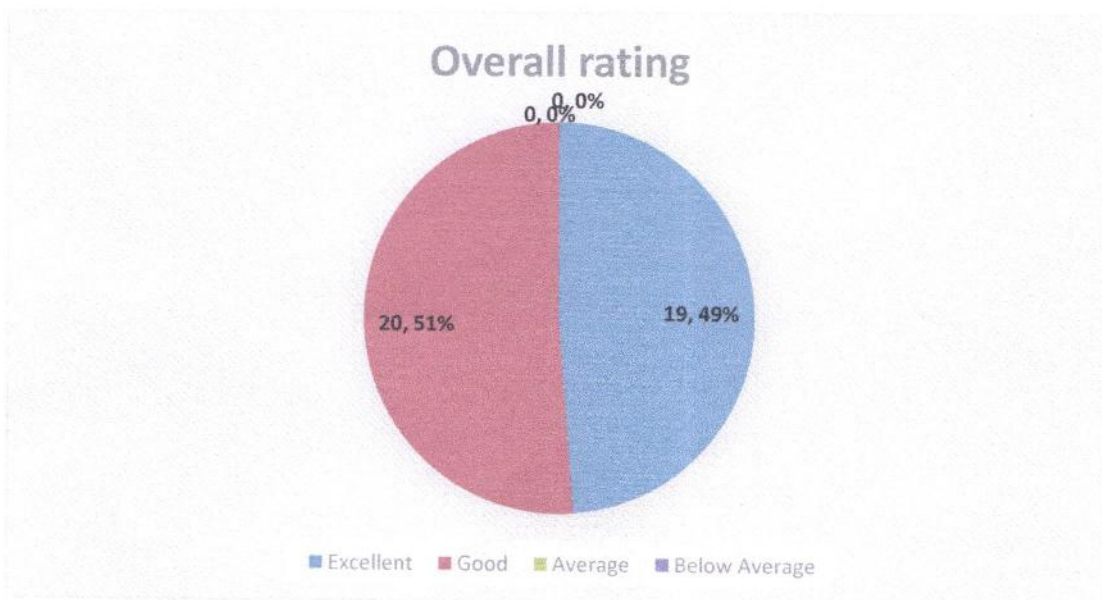
11. Quality and clarity of textual/ study/ reference material suggested

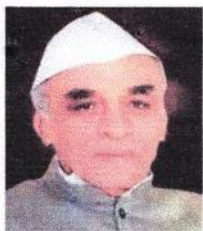
Responses: 39



12. Overall rating

Responses: 39





M.S.P.Mandal's
SUNDERRAO SOLANKE MAHAVIDYALAYA

MAJALGAON, DIST.BEED (MH)-431131

NAAC Re-Accredited "A" Grade



Feedback Analysis

Respondents Details:

A. Applicability of the syllabus to local developmental needs

From the total 39 Teachers respondents, maximum 17 respondents rated as excellent in respect of applicability of the syllabus to local developmental need followed, by 19 respondent, rated it as good

B. Difficulty level of the syllabus

It is found that the maximum 11 of Teachers respondent opined that the difficulty level of the syllabus was excellent, 23 thinks as good, 5 replied as it is average.

C. Clarity about the course objectives

The 21 respondents from the total Teachers noted that clarity about the course objectives in curriculum found excellent; followed by 16 remarked as good.

D. Weightage given to employability

From the total 39 respondents, 16 of respondents opined that the weighted given to employability found excellent and 18 opined it is good.

E. Depth of the Course Content

It is found that the 17 number of Teachers opined that the depth of the course content is found excellent. 19 Teachers think in this case as good.

F. Incorporation of latest knowledge & information

The collected information indicates that the maximum number of respondents 19 found the incorporation of latest knowledge & information, followed by 16 says it is good.

G. Research Possibilities

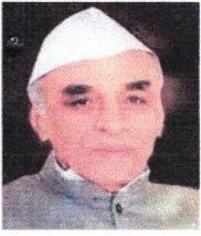
From the total 39 respondents, 13 Teachers rated the Research possibilities is found excellent and majority of 19 respondents rated to Research possibilities is as good, 6 respondents says it is average.

H. Mechanism used for development/ revision of curriculum by BoS

It is observed that 13 of the Teachers feel that Mechanism used for development/ revision of curriculum by BoS is excellent, followed by majority 19 of the opined as good, 7 respondents says it is average.

I. Weightage given to learning values like knowledge, skills, analytical abilities, etc.

From the total 39 Teachers respondents, highest 21 of the respondents opined that Weightage given to



M.S.P.Mandal's
SUNDERRAO SOLANKE MAHAVIDYALAYA
MAJALGAON, DIST.BEED (MH)-431131
NAAC Re-Accredited "A" Grade



Feedback Analysis

learning values like knowledge, skills, analytical abilities, etc. found excellent. 15 respondents of them opined as good.

J. Relevance of course outcomes

From the total 39 Teachers respondents, 11 opined that the relevance of course outcomes is found excellent, followed by majority 25 of them opined as good, 3 thinks that it is Average.

K. Quality and clarity of textual/ study/ reference material suggested

It is found that 14 of Teachers feels that quality and clarity of textual/study/ reference material suggested opined as excellent, followed by majority 23 of them opined as it is good.

L. Overall rating

It is found that maximum 19 of Teachers rated to excellent, followed by 20 think it is good.

Conclusion:

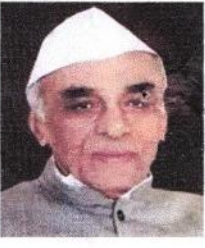
The consolidated feedback report of Teachers is shared with the all HOD's /Coordinators / Officials of different departments for further appropriate action and decision making in this respect.

IQAC Coordinator
Coordinator

Internal Quality Assurance Cell (IQAC)
Sunderrao Solanke Mahavidyalaya,
Majalgaon, Dist. Beed (MS)



Principal
PRINCIPAL
Sunderrao Solanke Mahavidyalaya
Majalgaon Dist. Beed (M.S.)



M.S.P.Mandal's

SUNDERRAO SOLANKE MAHAVIDYALAYA

MAJALGAON, DIST.BEED (MH)-431131

NAAC Re-Accredited "A" Grade

Feedback Analysis



Marathwada Shikshan Prasarak Mandal's

**Sunderrao Solanke Mahavidyalaya, Majalgaon
Dist. Beed**



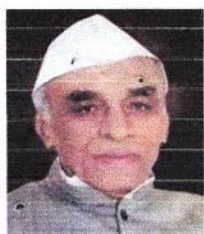
INTERNAL QUALITY ASSURANCE CELL



FEEDBACK ANALYSIS

ALUMAI FEEDBACK ON CURRICULUM

2021-2022



M.S.P.Mandal's

SUNDERRAO SOLANKE MAHAVIDYALAYA

MAJALGAON, DIST.BEED (MH)-431131

NAAC Re-Accredited "A" Grade



Feedback Analysis

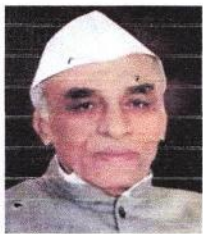
A REPORT ON ALUMNI FEEDBACK ON CURRICULUM

ACADEMIC YEAR 2021 – 2022

Online feedback on curriculum collected from the alumni for the academic year 2021-2022 on various important aspects which include:

1. Fulfilment of my learning needs
2. Applicability of the curriculum to real life situations
3. Clarity about the course objectives
4. Weightage given to employability
5. Weightage given to skill development
6. Weightage given to entrepreneurship
7. Difficulty level of the course content
8. Promotion of independent thinking by curriculum
9. Usefulness of the curriculum at workplace
10. Usefulness of the curriculum in my higher education
11. Fulfilment of learning objectives
12. Overall rating

68 Alumni participated in the survey consisting of 12 aspects/questions.



M.S.P.Mandal's

SUNDERRAO SOLANKE MAHAVIDYALAYA

MAJALGAON, DIST.BEED (MH)-431131

NAAC Re-Accredited "A" Grade



Feedback Analysis

Summary of Feedback

ALUMNI FEEDBACK ON CURRICULUM

ACADEMIC YEAR 2021 – 2022

Sr. NO.	PARAMETERS	Excellent	Good	Average	Below Average
1	Fulfilment of my learning needs	33	31	4	0
2	Applicability of the curriculum to real life situations	28	32	7	1
3	Clarity about the course objectives	32	27	8	1
4	Weightage given to employability	27	34	6	1
5	Weightage given to skill development	30	31	7	0
6	Weightage given to entrepreneurship	23	32	9	4
7	Difficulty level of the course content	29	27	9	3
8	Promotion of independent thinking by curriculum	25	35	7	1
9	Usefulness of the curriculum at workplace	28	29	9	2
10	Usefulness of the curriculum in my higher education	33	24	9	2
11	Fulfilment of learning objectives	29	34	3	2
12	Overall rating	34	29	5	0



M.S.P.Mandal's

SUNDERAO SOLANKE MAHAVIDYALAYA

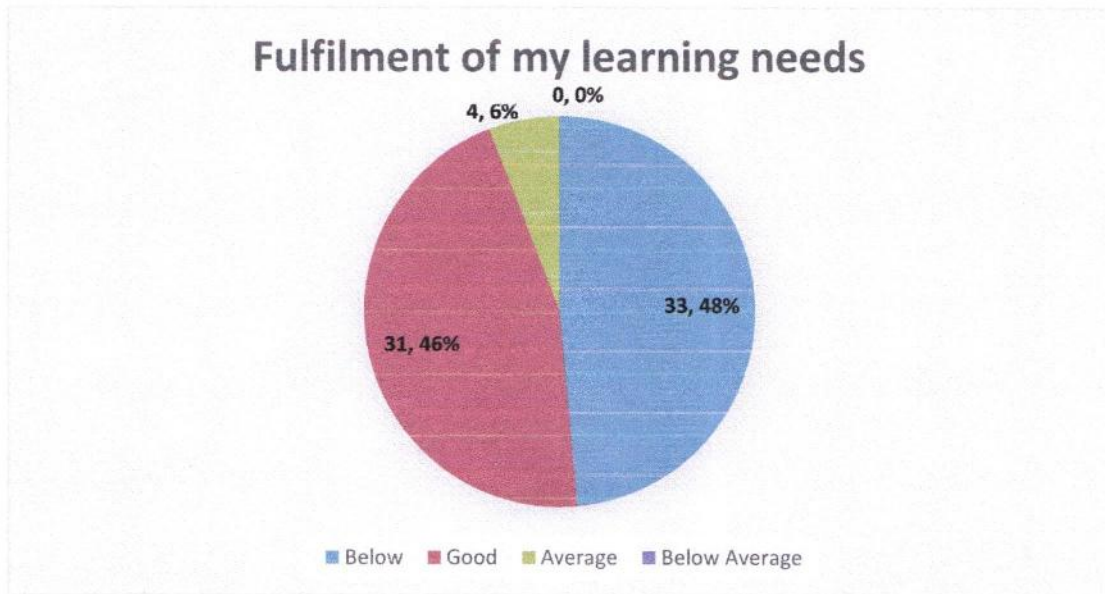
MAJALGAON, DIST.BEED (MH)-431131

NAAC Re-Accredited "A" Grade

Feedback Analysis

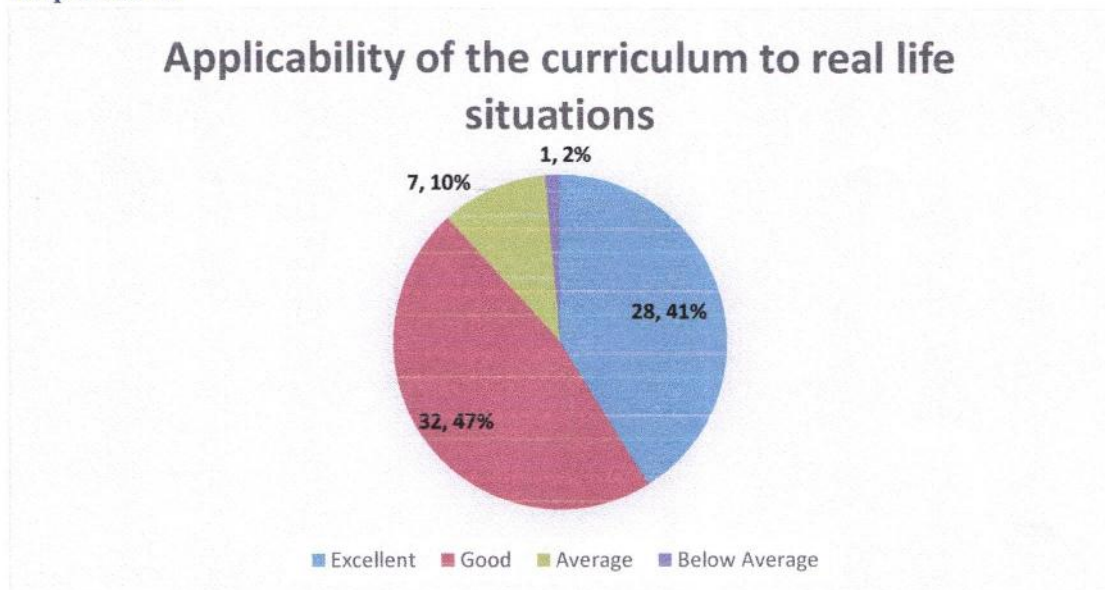
1. Fulfilment of my learning needs

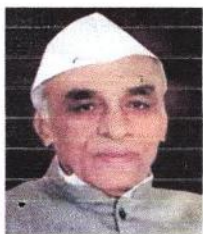
Responses: 68



2. Applicability of the curriculum to real life situations

Responses: 68





M.S.P.Mandal's
SUNDERRAO SOLANKE MAHAVIDYALAYA

MAJALGAON, DIST.BEED (MH)-431131

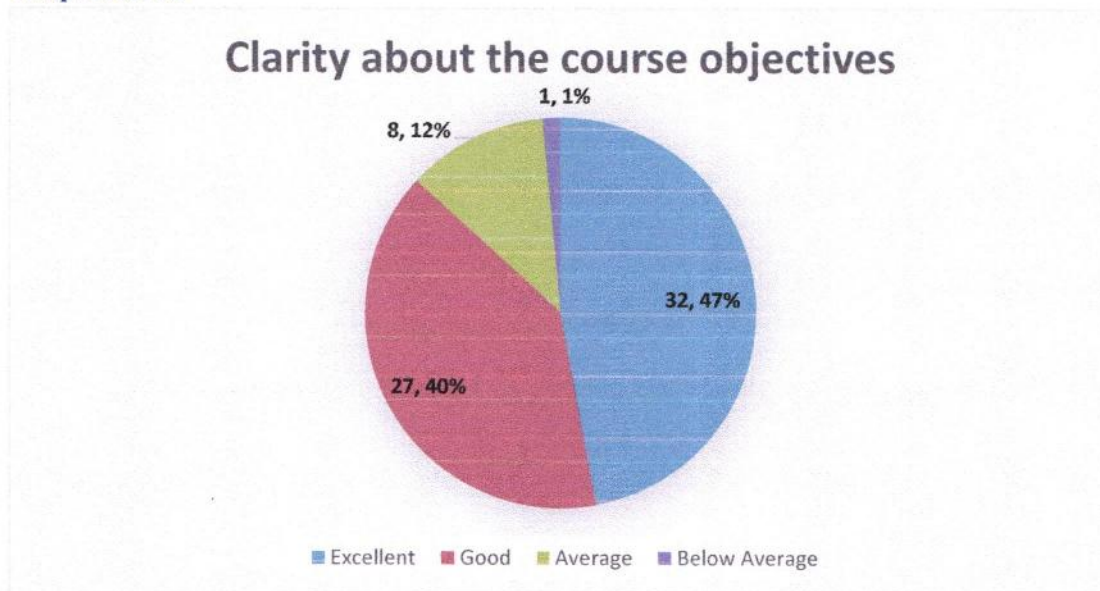
NAAC Re-Accredited "A" Grade



Feedback Analysis

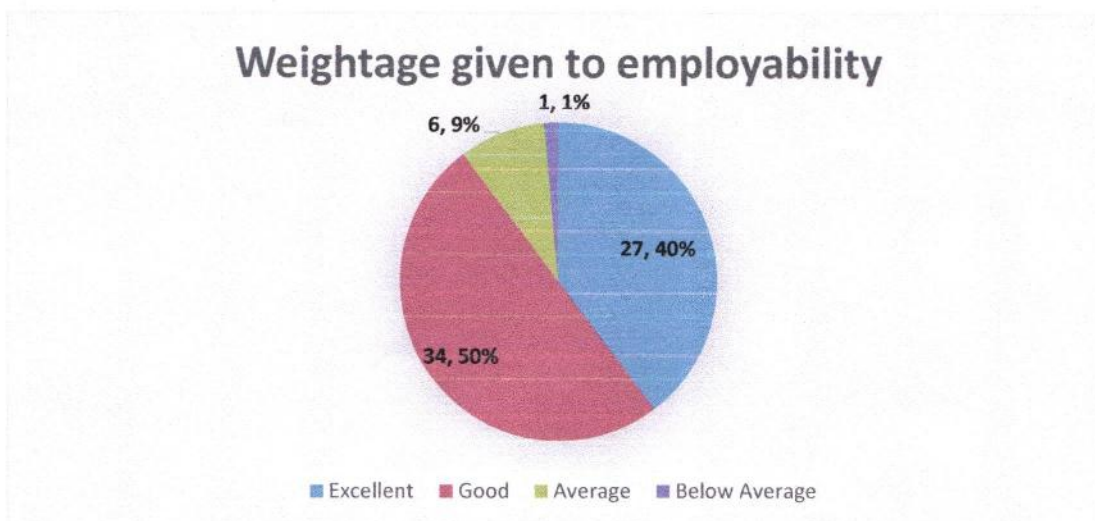
3. Clarity about the course objectives

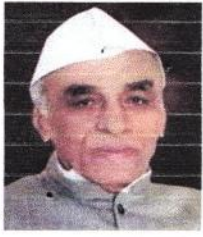
Responses: 68



4. Weightage given to employability

Responses: 68

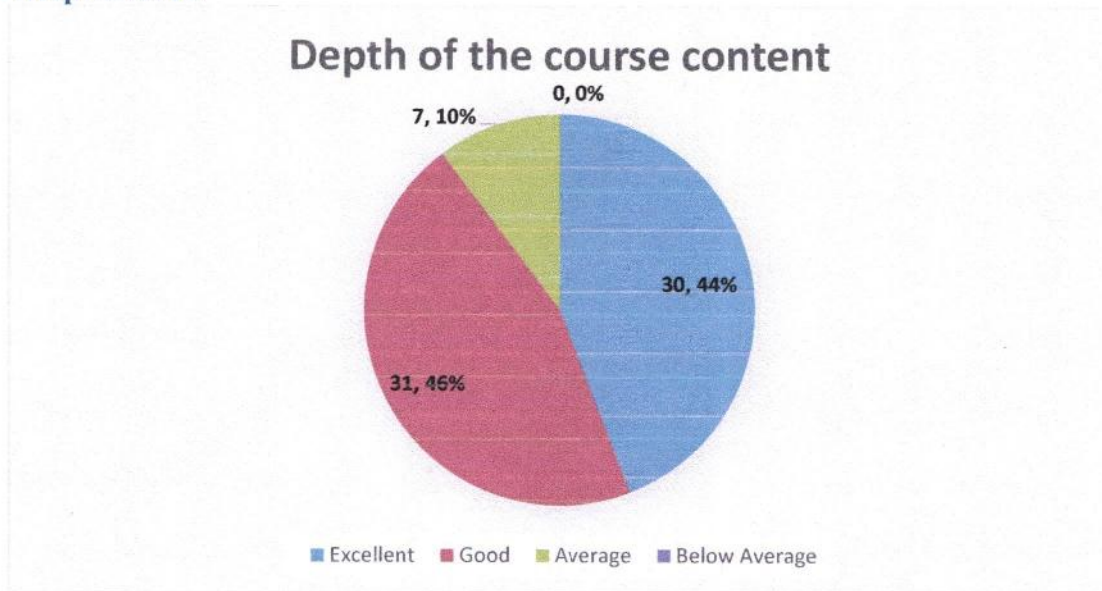




Feedback Analysis

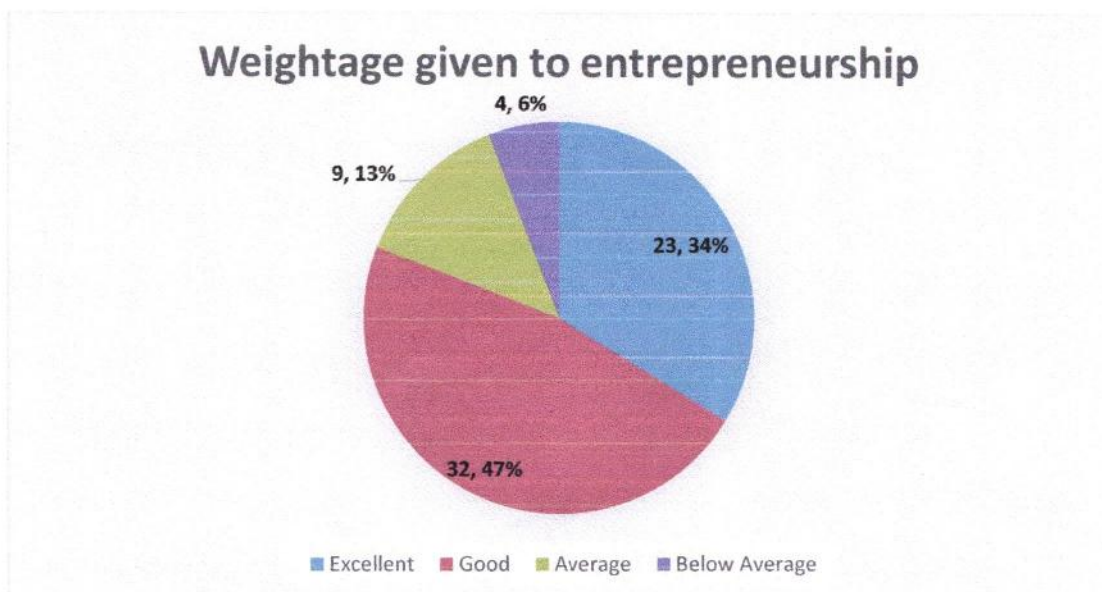
5. Weightage given to skill development

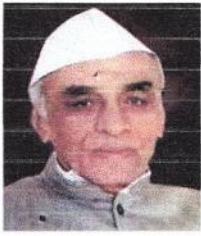
Responses: 68



6. Weightage given to entrepreneurship

Responses: 68

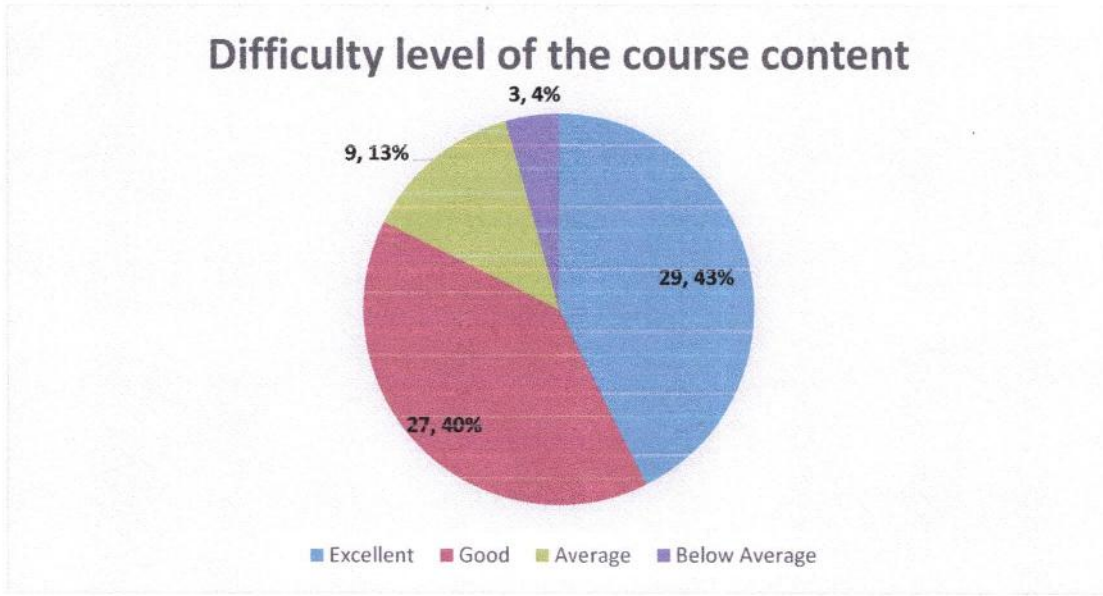




Feedback Analysis

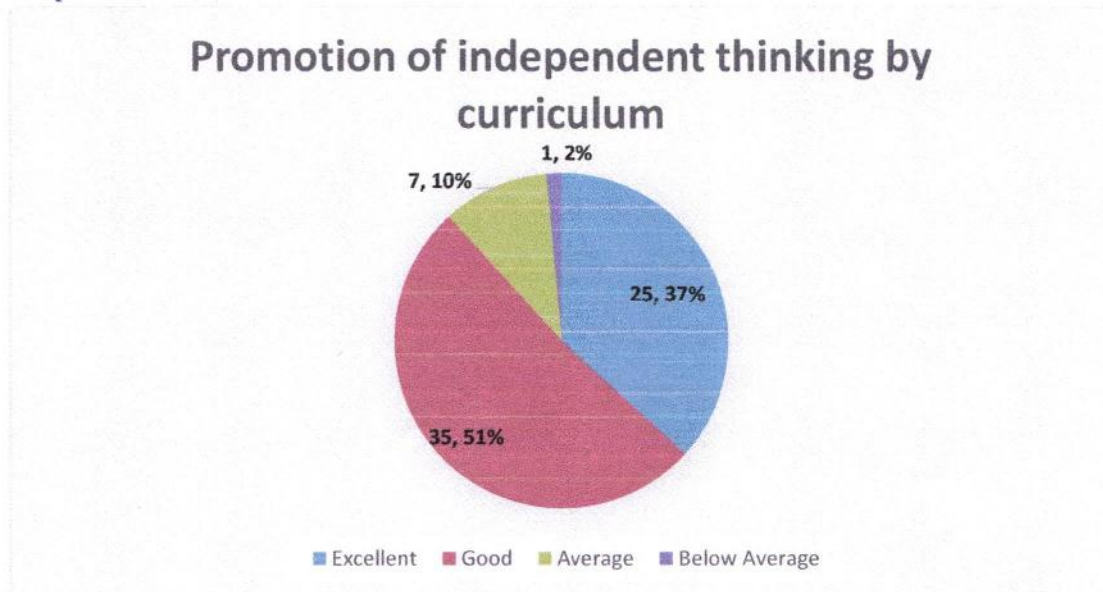
7. Difficulty level of the course content

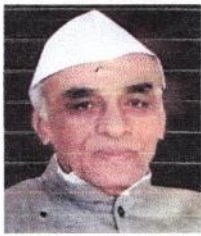
Responses: 68



8. Promotion of independent thinking by curriculum

Responses: 68

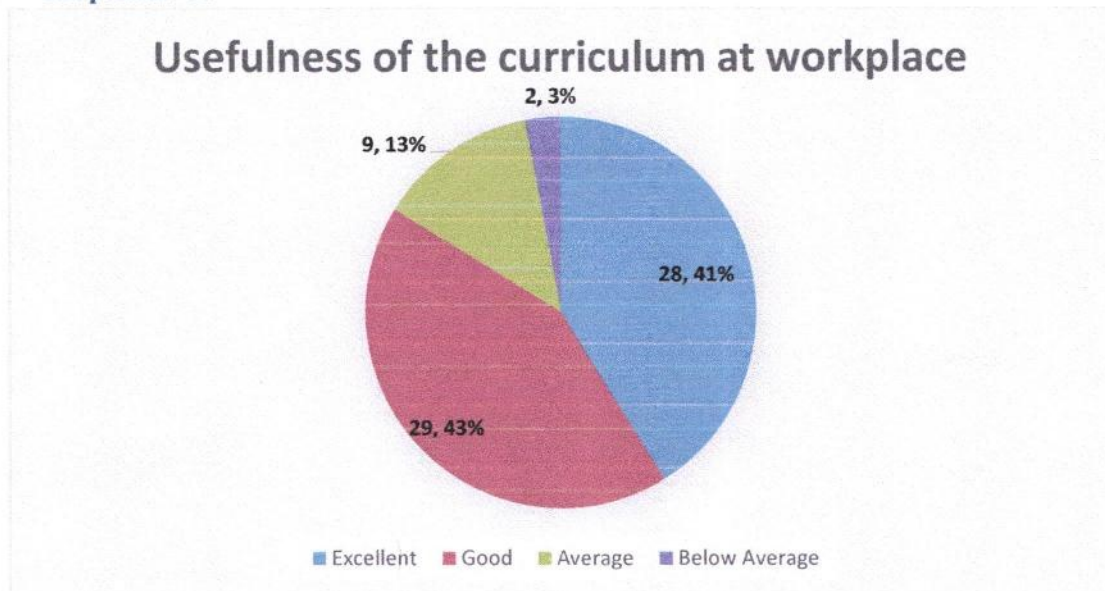




Feedback Analysis

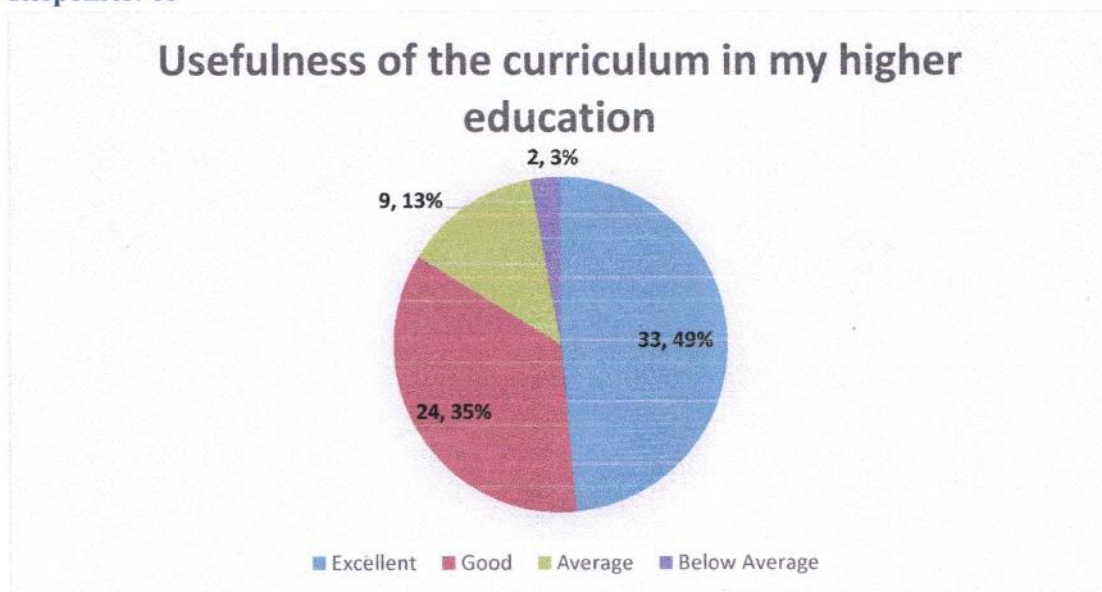
9. Usefulness of the curriculum at workplace

Responses: 68



10. Usefulness of the curriculum in my higher education

Responses: 68

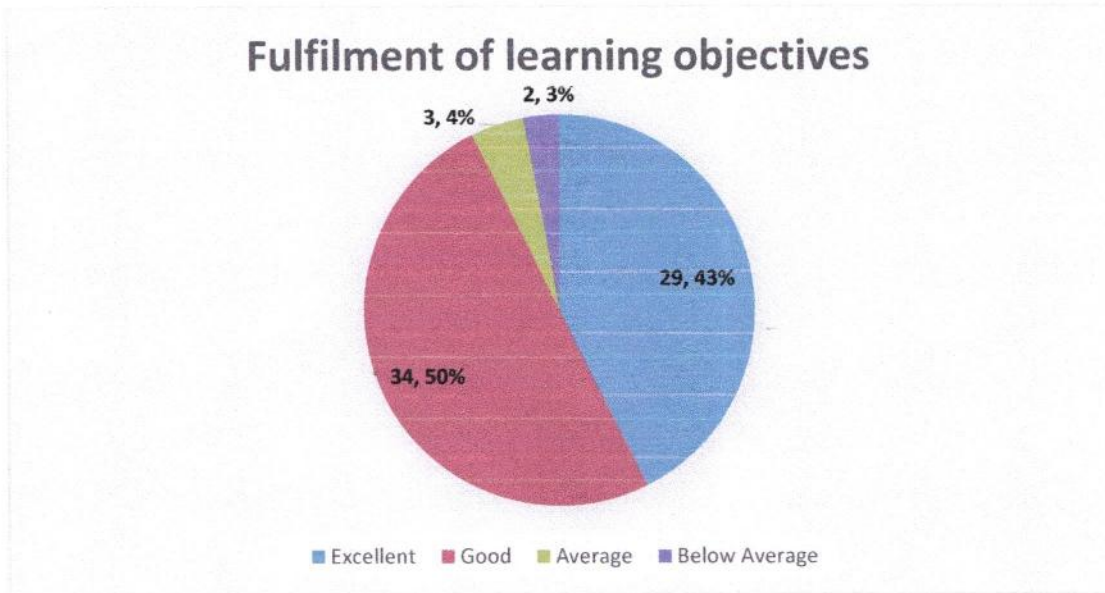




Feedback Analysis

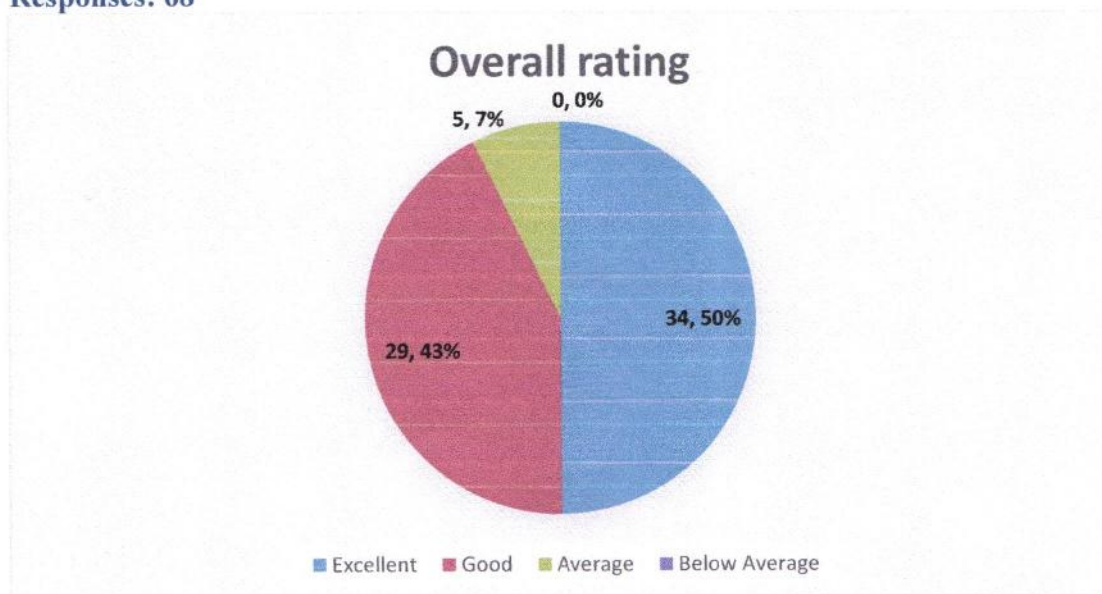
11. Fulfilment of learning objectives

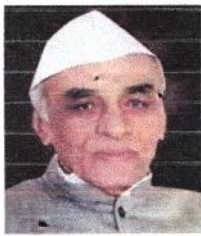
Responses: 68



12. Overall rating

Responses: 68





M.S.P.Mandal's
SUNDERRAO SOLANKE MAHAVIDYALAYA

MAJALGAON, DIST.BEED (MH)-431131

NAAC Re-Accredited "A" Grade



Feedback Analysis

Respondents Details:

A. Applicability of the syllabus to local developmental needs

From the total 68 Alumni respondents, maximum 33 respondents rated as excellent in respect of fulfilment of my learning needs followed, by 31 respondent, rated it as good

B. Applicability of the curriculum to real life situations

It is found that the maximum 28 of Alumni respondent opined that the Applicability of the curriculum to real life situations was excellent, 32 thinks as good, 7 replied as it is average.

C. Clarity about the course objectives

The 32 respondents from the total Alumni noted that clarity about the course objectives in curriculum found excellent; followed by 27 remarked as good.

D. Weightage given to employability

From the total 68 respondents, 27 of respondents opined that the Weighted given to employability found excellent and 34 opined it is good.

E. Weightage given to skill development

It is found that the 30 number of Alumni opined that the Weightage given to skill development is found excellent. 31 Alumni think in this case as good.

F. Weightage given to entrepreneurship

The collected information indicates that the maximum number of respondents 23 found the Weightage given to entrepreneurship, followed by 32 says it is good.

G. Difficulty level of the course content

From the total 68 respondents, 29 Alumni rated the Difficulty level of the course content is found excellent and majority of 35 respondents rated to Difficulty level of the course content is as good, 7 respondents says it is average.

H. Promotion of independent thinking by curriculum

It is observed that 25 of the Alumni feel that Promotion of independent thinking by curriculum is excellent, followed by majority 35 of them opined as good, 7 respondents says it is average.

I. Usefulness of the curriculum at workplace

From the total 68 Alumni respondents, highest 28 of the respondents opined that Usefulness of the



M.S.P.Mandal's
SUNDERRAO SOLANKE MAHAVIDYALAYA
MAJALGAON, DIST.BEED (MH)-431131
NAAC Re-Accredited "A" Grade



Feedback Analysis

curriculum at workplace found excellent. 29 respondents of them opined as good.

J. Usefulness of the curriculum in my higher education

From the total 68 Alumni respondents, 33 opined that the Usefulness of the curriculum in my higher education is found excellent, followed by majority 24 of them opined as good, 9 thinks that it is Average.

K. Fulfilment of learning objectives

It is found that 14 of Alumni feels that Quality and clarity of textual/study/ reference material suggested opined as excellent, followed by majority 23 of them opined as it is good.

L. Overall rating


It is found that maximum 34 of Alumni rated to excellent, followed by 29 think it is good.

Conclusion:

The consolidated feedback report of Alumni is shared with the all HOD's / Coordinators / Officials of different departments for further appropriate action and decision making in this respect.


IQAC Coordinator
Coordinator
Internal Quality Assurance Cell (IQAC)
Sunderrao Solanke Mahavidyalaya,
Majalgaon, Dist. Beed (MS)




Principal
PRINCIPAL
Sunderrao Solanke Mahavidyalaya
Majalgaon Dist. Beed (M.S.)



Index

Sr.no	Content
1	Brief overview
2	Chart
3	Course Of Action
4	Action Taken Report
5	Sample Feed Back Forms

Brief Overview of Feedback process of the institution

M.S.P. Mandal's Sunderrao Solanke Mahavidyalaya, Majalgaon collected feedback (Online and Offline) from different stakeholders

1. Students
2. Teachers
3. Employers
4. Alumni

The college undertakes the following process:

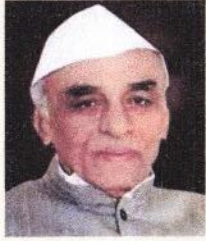
1. Evaluation of the existing curricula
2. Motivate the stakeholders for feedback on Curriculum
3. Receiving the feedback from various stakeholders
4. Properly analyse the responses of the stakeholders
5. Appropriate action is taken

Process of Feedback:

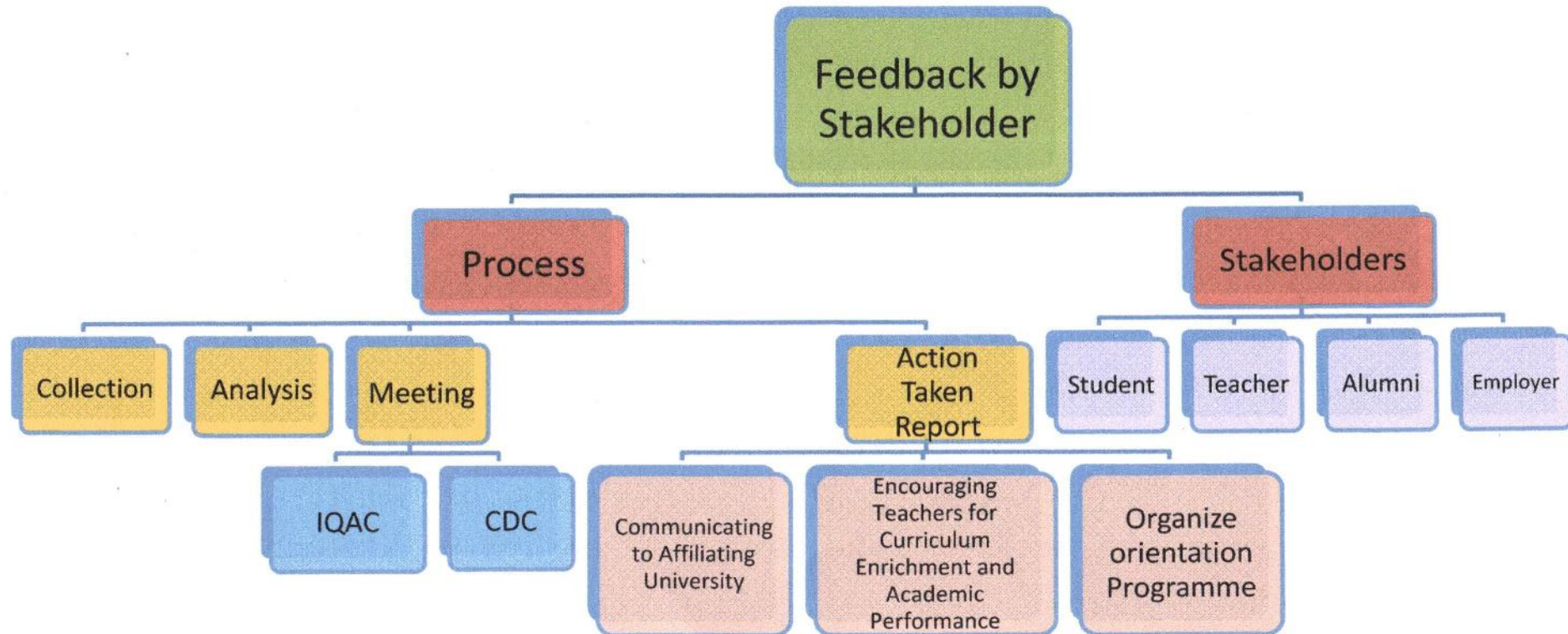
1. To make feedback from.
2. Fill up feedback forms from different stakeholders.
3. To arrange meeting for feedback analysis.
4. Dissemination of feedback analysis to teachers and affiliating university.
5. Communicate the analysis to individual board of studies of the affiliating university.





PRINCIPAL
Sunderrao Solanke Mahavidyalaya
Majalgaon Dist. Beed (M.S.)



M.S.P.Mandal's
SUNDERRAO SOLANKE MAHAVIDYALAYA
MAJALGAON, DIST.BEED (MH)-431131
NAAC Re-Accredited "A" Grade
Feedback Mechanism




PRINCIPAL
Sunderrao Solanke Mahavidyalaya
Majalgaon Dist. Beed (M.S.)

M.S.P. Mandal's
Sunderrao Solanke Mahavidyalaya, Majalgaon
Dist- Beed.

2021-22

Students feedback on Curriculum - :link

<https://www.ssmmajalgaons.com/feedback-by-students-on-curriculum/>

1. Alumni's feedback on Curriculum - :link

<https://www.ssmmajalgaons.com/feedback-by-alumni-on-curriculum/>

2. Teacher's feedback on Curriculum - :link

<https://www.ssmmajalgaons.com/feedback-by-techers/>

3. Employers' feedback on Curriculum - :link

<https://www.ssmmajalgaons.com/employers-on-curriculum/>



NOTICE

Date: 21/04/2022

All students of UG and PG are informed to submit following feedback:

Feedback on curriculum by students: <https://www.smmajalgaons.com/feedback-by-students-on-curriculum/>

Feedback on curriculum by teachers: <https://www.smmajalgaons.com/feedback-by-teachers/>.

Feedback on curriculum by employers <https://www.smmajalgaons.com/employers-on-curriculum/>

Feedback on curriculum by Alumni <https://www.smmajalgaons.com/feedback-by-alumni-on-curriculum/>

Student Satisfaction Survey: <https://www.smmajalgaons.com/student-satisfaction-survey%ef%bf%bc/>

It is mandatory for all students to submit the feedback.


PRINCIPAL
Sunderrao Solanke Mahavidyalaya
Majalgaon Dist. Beed (M.S.)

NOTICE

Date:- 21/04/2022

All Clock Hour Basis/Fix Pay and Regular teachers are hereby informed to submit following feedback

Feedback on curriculum by teachers Link: <https://www.smmajalgaons.com/feedback-by-teachers/>.

All teachers are informed to submit the feedback.


PRINCIPAL
Sundarrao Solanke Mahavidyalaya
Majalgaon Dist. Beed (M.S.)

NOTICE

Date: 03/11/2022

All Vice-principals and IQAC members are informed to remain present for a meeting to discuss the feedback taken from different stakeholders on curriculum and its analysis on 04/11/2022 at IQAC at 01.00 pm.

The meeting would also address the issues pertaining to the suggestions given by different improvement in the curriculum.



PRINCIPAL
Sundarrao Solarke Mahavidyalaya
Majalgaon Dist. Beed (M.S.)

MEETING AGENDA

Date: 4/11/2022

Meeting Subject: Review of the feedback collected from different stakeholders and its analysis.

Objective: To discuss issues pertaining to the feedback analysis and take actions accordingly to bring about positive changes in the curriculum and curriculum delivery.

Date: 04/11/2022

Location: Meeting Hall

Time: 1.00 pm

Type: Formal

Attendees:

Principal, Vice-principals, members of IQAC & IQAC Coordinator

Agenda Items the Present Meeting

1. Feedback collected by IQAC online and offline
2. The suggestions are given by different employers
3. Discussions pertaining to value added /certificate courses
4. Discussion regarding skill oriented programs
5. Discussing the course of action according to the feedback
6. Disseminate the feedback analysis to stakeholders and affiliating university


Coordinator
Internal Quality Assurance Cell (IQAC)
Sunderrao Solanke Mahavidyalaya,
Majalgaon, Dist. Beed (MS)




PRINCIPAL
Sunderrao Solanke Mahavidyalaya
Majalgaon Dist. Beed (M.S.)

NOTICE

All HoDs and teaching staff are hereby informed to go through the curriculum feedback analysis attached herewith for your perusal. You are further instructed. to communicate your feedback to the concerned chairman of BoS in your subject at the affiliating University.


PRINCIPAL
Sundarrao Solanke Mahavidyalaya
Majalgaon Dist. Beed (M.S.)

Encl: Curriculum Feedback analysis 2021-2022



M. S. P. Mandal's

Sunderrao Solanke Mahavidyalaya Majalgaon,

DIST. BEED (MH)-431131

Internal Quality Assurance Report

Feedback on Curriculum

ACTION TAKEN REPORT

2021 -2022

Feedback was collect online for the academic year 2021-2022 in the categories like feedback by students, parents, teachers, alumni and employers. However, looking at the feedback given by all stakeholders, the following measures were taken for appreciation and suggesting certain changes in the curriculum of the university.

- To include certain value addition issues it was decided that few value addition courses will be commenced.
- Feedback given by the various stakeholders was found very encouraging for this academic year. It was advised to the all concern to make it more suitable in real life situation to face challenges.
- To prepare systematic feedback report from each department and send them to the respective BoS for the necessary changes.
- There is scope in the curriculum of various fields to give exposure to new knowledge along with practical /field work. It was decided that to communicate with their syllabus framing committees to add it.
- All feedback was distributed paper wise as well as program wise for certain specifications, to the respective departments for necessary action.
- It was advised to the teachers to give more Weightage on learning values like skill, analytical abilities etc. while contributing to the curriculum framework.
- HoDs were instructed to take feedback from the colleagues in the department and compile it systematically.
- It was decided that the teachers who will contribute in syllabus framing, while suggesting textual/ study, reference material in curriculum he should focused on quality material and suggest it for references.
- To meet certain challenges few skill oriented courses thought to be commenced in the year 2021 -2022.

Coordinator

Internal Quality Assurance Cell (IQAC)
Sunderrao Solanke Mahavidyalaya,
Majalgaon, Dist. Beed (MS)



PRINCIPAL

Sunderrao Solanke Mahavidyalaya
Majalgaon Dist. Beed (M.S.)

FEEDBACK BY STUDENTS ON CURRICULUM (21-22)

Fulfilment of my learning needs

:

Excellent Good Average Below Average

Applicability of the curriculum to real life situations:

Excellent Good Average Below Average

Clarity about the course objectives:

Excellent Good Average Below Average

Weightage given to employability:

Excellent Good Average Below Average

Weightage given to skill development:

Excellent Good Average Below Average

Structure of the syllabus:

Excellent Good Average Below Average

Difficulty level of the course content:

Excellent Good Average Below Average

Promotion of independent thinking by curriculum

:

Excellent Good Average Below Average

Exposure to new knowledge and practices:

Excellent Good Average Below Average

Weightage to practical /field work

:

Excellent Good Average Below Average

Creation of interest to pursue higher education

:

Excellent Good Average Below Average

Overall rating:

Excellent Good Average Below Average


Coordinator

Internal Quality Assurance Cell (IQAC)
Sunderrao Solanke Mahavidyalaya,
Majalgaon, Dist. Beed (MS)





PRINCIPAL
Sunderrao Solanke Mahavidyalaya
Majalgaon Dist. Beed (M.S.)