



Marathwada Shikshan Prasarak Mandal's

Sunderrao Solanke Mahavidyalaya, Majalgaon



INTERNAL QUALITY ASSURANCE CELL

CRITERION 2 – TEACHING-LEARNING EVALUATION

2.3 Teaching-Learning Process

2.3.1 Student centric methods, such as experiential learning, participative learning and problem solving methodologies are used for enhancing learning experiences using ICT tools

Student Satisfaction survey on overall teaching learning process and action taken report

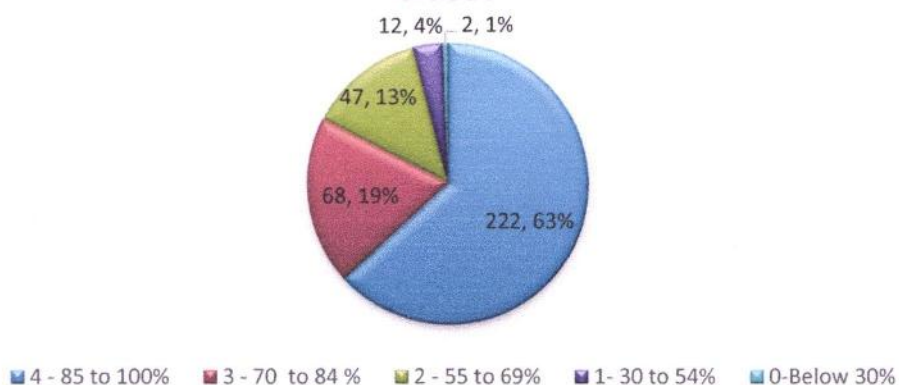


STUDENT SATISFACTION SURVEY

1. How much of the syllabus was covered in the class?

4 - 85 to 100%	222
3 - 70 to 84 %	68
2 - 55 to 69%	47
1- 30 to 54%	12
0-Below 30%	2

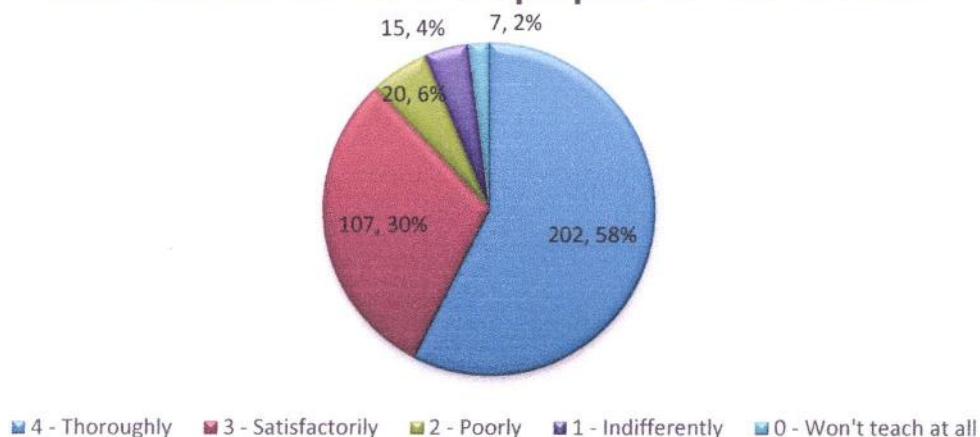
How much of the syllabus was covered in the class?



2. How well did the teachers prepare for the classes?

4 - Thoroughly	202
3 - Satisfactorily	107
2 - Poorly	20
1 - Indifferently	15
0 - Won't teach at all	7

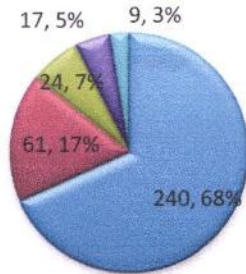
How well did the teachers prepare for the classes?



3. How well were the teachers able to communicate?

4 - Always effective	240
3 - Sometimes effective	61
2 - Just satisfactorily	24
1 - Generally ineffective	17
0 - Very poor communication	9

How well were the teachers able to communicate?

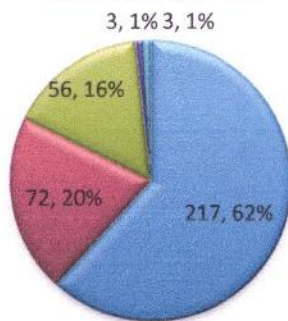


- 4 - Always effective
- 3 - Sometimes effective
- 2 - Just satisfactorily
- 1 - Generally ineffective
- 0 - Very poor communication

4. The teacher's approach to teaching can best be described as

4 - Excellent	217
3 - Very good	72
2 - Good	56
1 - Fair	3
0 - Poor	3

The teacher's approach to teaching can best be described as

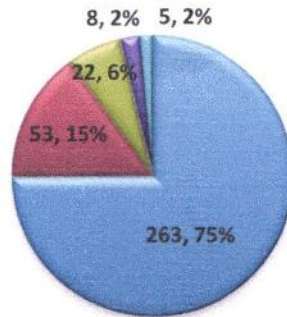


- 4 - Excellent
- 3 - Very good
- 2 - Good
- 1 - Fair
- 0 - Poor

5. Was your performance in assignments discussed with you?

4 - Every time	263
3 - Usually	53
2 - Occasionally/Sometimes	22
1 - Rarely	8
0 - Never	5

Was your performance in assignments discussed with you?

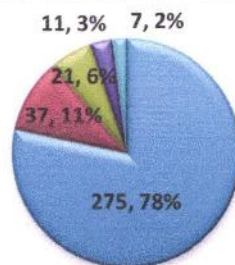


■ 4 - Every time ■ 3 - Usually ■ 2 - Occasionally/Sometimes ■ 1 - Rarely ■ 0 - Never

6. The institute takes active interest in promoting internship, student exchange, field visit opportunities for students.

4 - Regularly	275
3 - Often	37
2 - Sometimes	21
1 - Rarely	11
0 - Never	7

The institute takes active interest in promoting internship, student exchange, field visit opportunities for students.

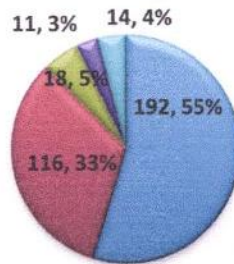


■ 4 - Regularly ■ 3 - Often ■ 2 - Sometimes ■ 1 - Rarely ■ 0 - Never

7. The teaching and mentoring process in your institution facilitates you in cognitive, social and emotional growth.

4 - Significantly	192
3 - Very well	116
2 - Moderately	18
1 - Marginally	11
0 - Not at all	14

The teaching and mentoring process in your institution facilitates you in cognitive, social and emotional growth.

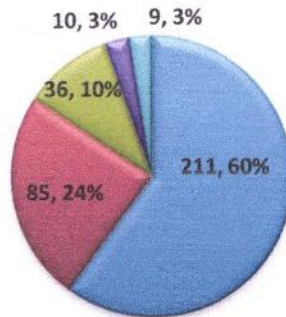


■ 4 - Significantly ■ 3 - Very well ■ 2 - Moderately ■ 1 - Marginally ■ 0 - Not at all

8. The institution provides multiple opportunities to learn and grow.

4 - Strongly agree	211
3 - Agree	85
2 - Neutral	36
1 - Disagree	10
0 - Strongly disagree	9

The institution provides multiple opportunities to learn and grow.

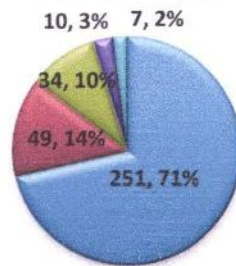


■ 4 - Strongly agree ■ 3 - Agree ■ 2 - Neutral ■ 1 - Disagree ■ 0 - Strongly disagree

9. Teachers inform you about your expected competencies, course outcomes and programme outcomes.

4 -Every time	251
3 - Usually	49
2 - Occasionally/Sometimes	34
1 - Rarely	10
0 - Never	7

Teachers inform you about your expected competencies, course outcomes and programme outcomes.

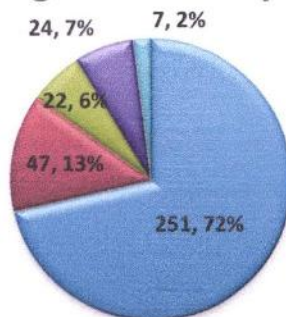


■ 4 -Every time ■ 3 - Usually ■ 2 - Occasionally/Sometimes ■ 1 - Rarely ■ 0 - Never

10. Your mentor does a necessary follow-up with an assigned task to you.

4 - Every time	251
3 - Usually	47
2 - Occasionally/Sometimes	22
1 - Rarely	24
0 - I don't have a mentor	7

Your mentor does a necessary follow-up with an assigned task to you.

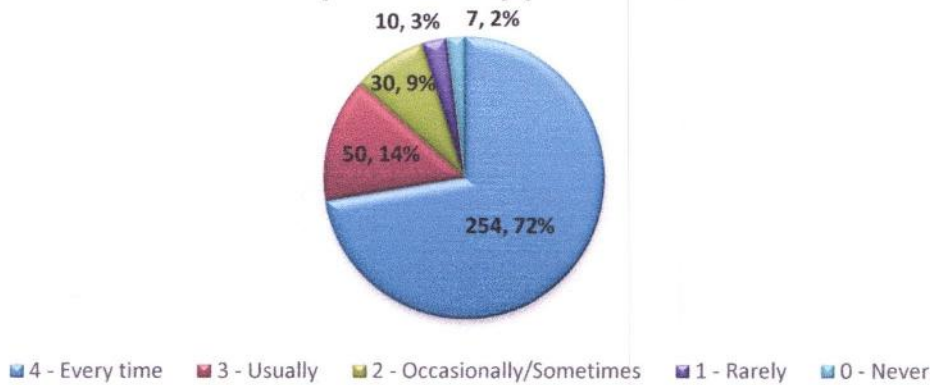


■ 4 - Every time ■ 3 - Usually ■ 2 - Occasionally/Sometimes ■ 1 - Rarely ■ 0 - I don't have a mentor

11. The teachers illustrate the concepts through examples and applications.

4 - Every time	254
3 - Usually	50
2 - Occasionally/Sometimes	30
1 - Rarely	10
0 - Never	7

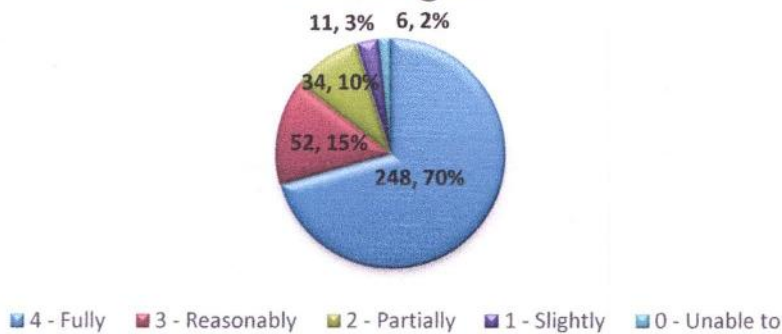
The teachers illustrate the concepts through examples and applications.



12. The teachers identify your strengths and encourage you with providing right level of challenges.

4 - Fully	248
3 - Reasonably	52
2 - Partially	34
1 - Slightly	11
0 - Unable to	6

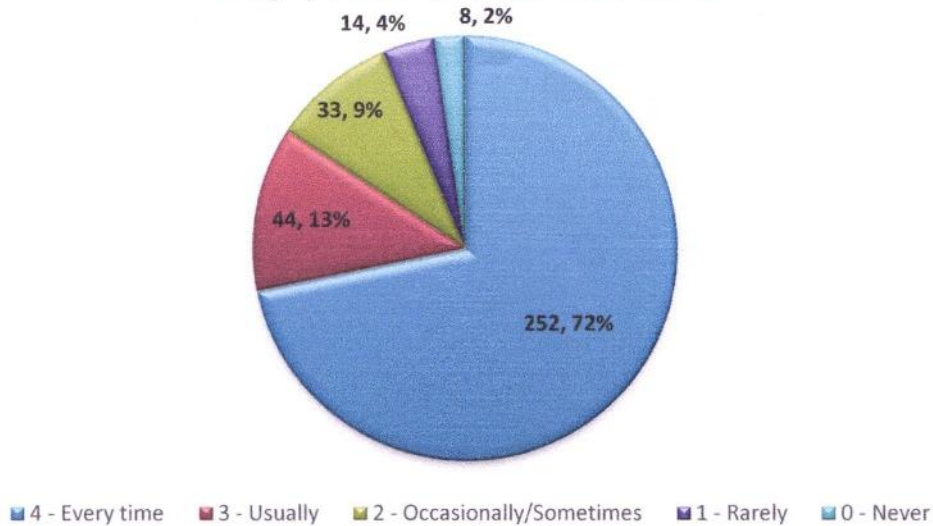
The teachers identify your strengths and encourage you with providing right level of challenges.



13. Teachers are able to identify your weaknesses and help you to overcome them.

4 - Every time	252
3 - Usually	44
2 - Occasionally/Sometimes	33
1 - Rarely	14
0 - Never	8

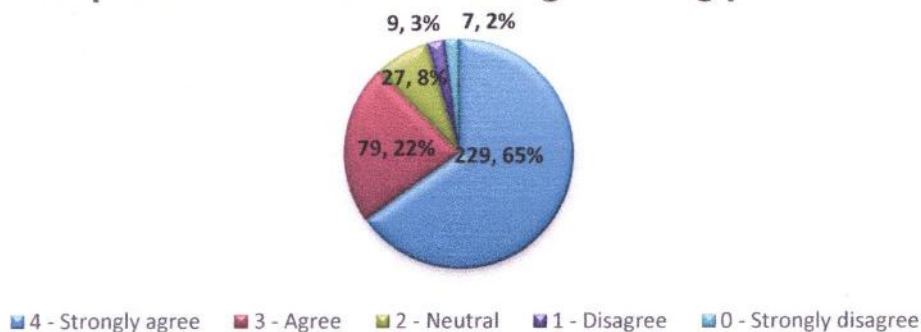
Teachers are able to identify your weaknesses and help you to overcome them.



14. The institution makes effort to engage students in the monitoring, review and continuous quality improvement of the teaching learning process.

4 - Strongly agree	229
3 - Agree	79
2 - Neutral	27
1 - Disagree	9
0 - Strongly disagree	7

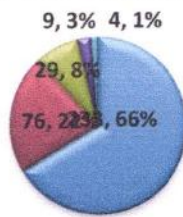
The institution makes effort to engage students in the monitoring, review and continuous quality improvement of the teaching learning process.



15. The institute / teachers use student centric methods, such as experiential learning, participative learning and problem solving methodologies for enhancing learning experiences.

4 - To a great extent	233
3 - Moderate	76
2 - Some what	29
1 - Very little	9
0 - Not at all	4

The institute / teachers use student centric methods, such as experiential learning, participative learning and problem solving methodologies for enhancing learning...

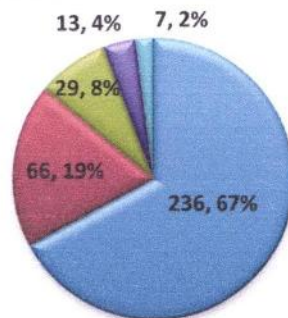


■ 4 - To a great extent ■ 3 - Moderate ■ 2 - Some what ■ 1 - Very little ■ 0 - Not at all

16. Teachers encourage you to participate in extracurricular activities.

4 - Strongly agree	236
3 - Agree	66
2 - Neutral	29
1 - Disagree	13
0 - Strongly disagree	7

Teachers encourage you to participate in extracurricular activities.

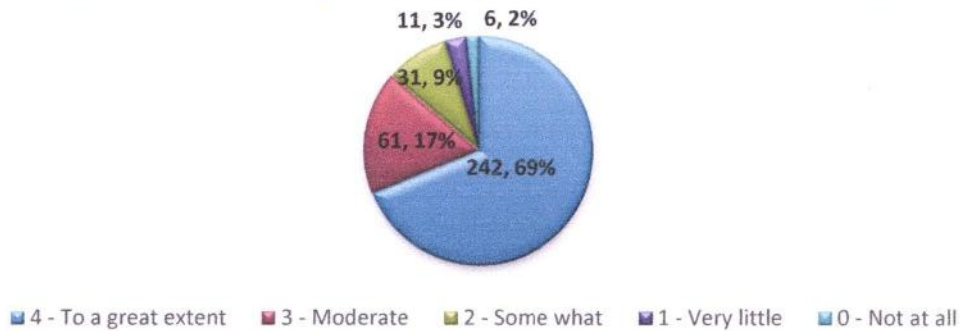


■ 4 - Strongly agree ■ 3 - Agree ■ 2 - Neutral ■ 1 - Disagree ■ 0 - Strongly disagree

17. Efforts are made by the institute / teachers to inculcate soft skills, life skills and employability skills to make you ready for the world of work.

4 - To a great extent	242
3 - Moderate	61
2 - Some what	31
1 - Very little	11
0 - Not at all	6

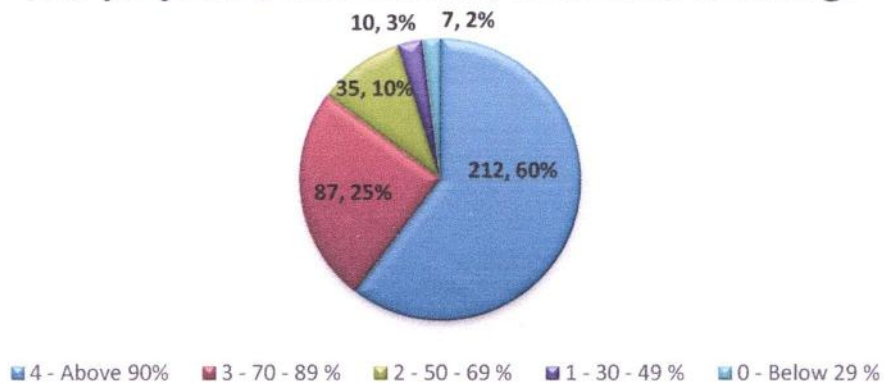
Efforts are made by the institute / teachers to inculcate soft skills, life skills and employability skills to make you ready for the world of work.



18. What percentage of teachers use ICT tools such as LCD projector, Multimedia, etc. while teaching.

4 - Above 90%	212
3 - 70 - 89 %	87
2 - 50 - 69 %	35
1 - 30 - 49 %	10
0 - Below 29 %	7

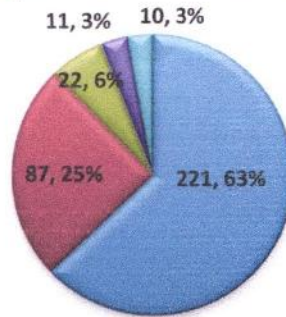
What percentage of teachers use ICT tools such as LCD projector, Multimedia, etc. while teaching.



19. The overall quality of teaching — learning. process in your institute is very good.

4 - Strongly agree	221
3 - Agree	87
2 - Neutral	22
1 - Disagree	11
0 - Strongly disagree	10

The overall quality of teaching — learning. process in your institute is very good.

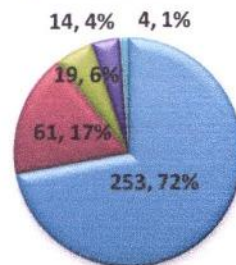


■ 4 - Strongly agree ■ 3 - Agree ■ 2 - Neutral ■ 1 - Disagree ■ 0 - Strongly disagree

20. Give three observation / suggestions to improve the overall teaching — learning experience in your institution.

4 - To a great extent	253
3 - Moderate	61
2 - Some what	19
1 - Very little	14
0 - Not at all	4

Give three observation / suggestions to improve the overall teaching — learning experience in your institution.



■ 4 - To a great extent ■ 3 - Moderate ■ 2 - Some what ■ 1 - Very little ■ 0 - Not at all


Coordinator
 Internal Quality Assurance Cell (IQAC)
 Sunderrao Solanke Mahavidyalaya,
 Majalgaon, Dist. Beed (MS)




PRINCIPAL
 Sunderrao Solanke Mahavidyalaya
 Majalgaon Dist. Beed (M.S.)



M.S.P.Mandal's
SUNDERRAO SOLANKE MAHAVIDYALAYA
MAJALGAON, DIST.BEED (MH)-431131

NAAC Re-Accredited "A" Grade



Students Satisfactory Survey

Sr. No.	Contents
1.	The context
2.	Observations
3.	Detailed feedback analysis
4.	Positive comments from the students
5.	Suggestions received from the students Action taken
6.	Action Taken



M.S.P.Mandal's
SUNDERRAO SOLANKE MAHAVIDYALAYA

MAJALGAON, DIST.BEED (MH)-431131

NAAC Re-Accredited "A" Grade

Students Satisfactory Survey



The context

The Internal Quality Assurance Cell, Sunderrao Solanke Mahavidyalaya, Majalgaon conducted a survey on the students feedback on the overall Teaching-Learning Process during the academic year 2021-22. A questionnaire comprising of twenty multiple choice questions was circulated among the students and 351 responses were recorded. The recorded responses were analyzed and necessary actions were taken.

• Observations

Analysis of students feedback on teaching learning process received from the 351 students was analyzed which revealed the following notable observations.

1. Approximately 65% of the respondents agree with more than 85 % of the syllabus covered by the faculty and around 20% of the respondents agree with the syllabus covered more than 70 to 84%. Thus teachers covered almost all the syllabus.
2. Around 60% of the respondents rated the teacher's preparation prior to classes as excellent or good.
3. The teacher-student interaction is effective in the institute.
4. Approximately 60% of the respondents rated the teachers approach towards teaching as excellent and around 20% responded the teachers approach as the best.
5. Teacher performance in assignment discussed with students is approximately 75%.
6. Around 80% of the respondents were quite satisfied with active interest in promoting internship, student exchange and field visit opportunities for students.
7. Approximately 55 % of the respondents related to teaching and mentoring process in the institutes facilities in cognitive, social and emotional growth were excellent or good.
8. Approximately 85% of the respondents were satisfied with opportunities provided by the institutes to learn and grow.
9. Around 85% of the respondents were agreeing to the teacher communication about the expected competencies, course outcomes and programme outcome with the students.



M.S.P.Mandal's

SUNDERRAO SOLANKE MAHAVIDYALAYA

MAJALGAON, DIST.BEED (MH)-431131

NAAC Re-Accredited "A" Grade



Students Satisfactory Survey

10. Around 85% of the students were agree to mentor usually does a necessary follow-up with an assigned task to them
11. It shows that around 90% of the teachers illustrate the concepts through examples and applications.
12. Approximately 85% of the respondents were agreeing to that the teacher usually identify their strength and encourage them with providing right level of challenges.
13. More than 70% of the respondents rated that every time teachers are able to identify their weakness and help them to overcome with that.
14. Around 90% of the respondents were agreeing to that the institution makes effort to engage students in the monitoring, review and continuous quality improvement of the teaching and learning process.
15. Approximately 90% of respondent rated to the teachers use various types of student centric teaching methods such participative, experiential and problem solving methodologies for enhancing learning experience to a great extent.
16. Around 85% students were agreeing to teachers encourage to them to participate in extracurricular activities.
17. More than 85% of respondent were rated that the great extent and moderate effort are made by the institute / teachers to inculcate soft skills, life skills and employability skill to make you ready for the world of work.
18. More than 85% of the students rated that the more than 70% of the teachers used ICT tools such as LCD projector, multimedia etc. while teaching.
19. Around 90% of the respondents were agreeing that the overall quality of teaching learning process in the institutes is very good.
20. Respondent given the suggestion related to offline practical's, online study materials, internal test, ICT teaching etc.



M.S.P.Mandal's

SUNDERRAO SOLANKE MAHAVIDYALAYA

MAJALGAON, DIST.BEED (MH)-431131

NAAC Re-Accredited "A" Grade

Students Satisfactory Survey



Positive comments received from the students:

- All teachers teach us very excellently.
- Teachers teach us in a good manner in lockdown also.

Suggestions received from the students

- Offline practicals are better to understand than online.
- Provide for hands-on activities (active learning) over straight lecturing.
- Need more group discussion groups and group work.
- Use online study material in classrooms.
- More internal test should be taken.
- Increasing the number of books in library.
- More use of ICT in teaching.
- Need some competition and programs for mood fresh and some other activities and sports outdoor activities.

Action taken

1. The Internal Quality Assurance Cell prepared institutional e-content consisting of videos and power point presentations.
2. College decided to strengthen ICT infrastructure for teaching-learning.
3. College to turn ICT enabled classrooms into smart class rooms.
4. Teachers were informed to increase the number of internal tests.
5. Teachers were informed to establish new club and run the club activities effectively to increase the number of student participants.

IQAC Coordinator
Coordinator

Internal Quality Assurance Cell (IQAC)
Sunderrao Solanke Mahavidyalaya,
Majalgaon, Dist. Beed (MS),

Committee Chairman

Principal
PRINCIPAL
Sunderrao Solanke Mahavidyalaya
Majalgaon Dist. Beed (M.S.)