



Marathwada Shikshan Prasarak Mandal's

Sunderrao Solanke Mahavidyalaya, Majalgaon



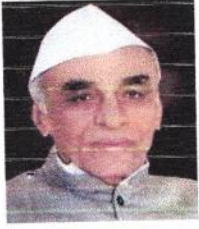
INTERNAL QUALITY ASSURANCE CELL

Criterion 1- Curricular Aspects

1.4 Feedback System

1.4.1 Institution obtains feedback on the academic performance and ambience of the institution from various stakeholders, such as Students, Teachers, Employers, Alumni etc. and action taken report on the feedback is made available on institutional website (Yes or No).

Feedback 2019-2020



M.S.P.Mandal's
SUNDERRAO SOLANKE MAHAVIDYALAYA

MAJALGAON, DIST.BEED (MH)-431131

NAAC Re-Accredited "A" Grade

Feedback Analysis

A REPORT ON FEEDBACK FROM STUDENTS ON CURRICULUM

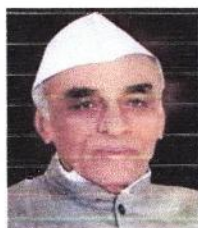
ACADEMIC YEAR 2019 – 2020

Feedback on curriculum collected from the students for academic year 2019-2020 on various important aspects which include:

- 1 Fulfillment of my learning needs
- 2 Applicability of the curriculum to real life situations
- 3 Clarity about the course objectives
- 4 Weightage given to employability
- 5 Weightage given to skill development
- 6 Structure of the syllabus
- 7 Difficulty level of the course content
- 8 Promotion of independent thinking by curriculum
- 9 Exposure to new knowledge and practices
- 10 Weightage to practical /field work
- 11 Creation of interest to pursue higher education
- 12 Overall rating

30 Alumni participated in the survey consisting of 12 aspects/questions on the Curriculum.





M.S.P.Mandal's
SUNDERRAO SOLANKE MAHAVIDYALAYA

MAJALGAON, DIST.BEED (MH)-431131

NAAC Re-Accredited "A" Grade



Feedback Analysis

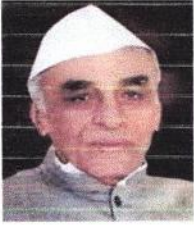
M.S.P.Mandal's

Sunderrao Solanke Mahavidyalaya Majalgaon

STUDENT FEEDBACK ON CURRICULUM

ACADEMIC YEAR -2019-20

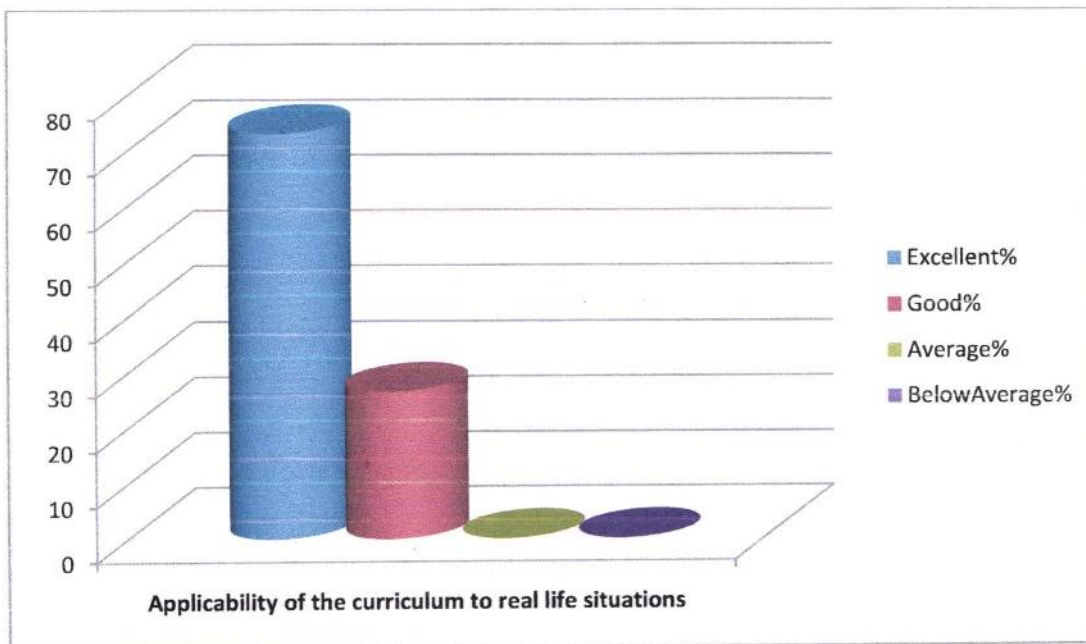
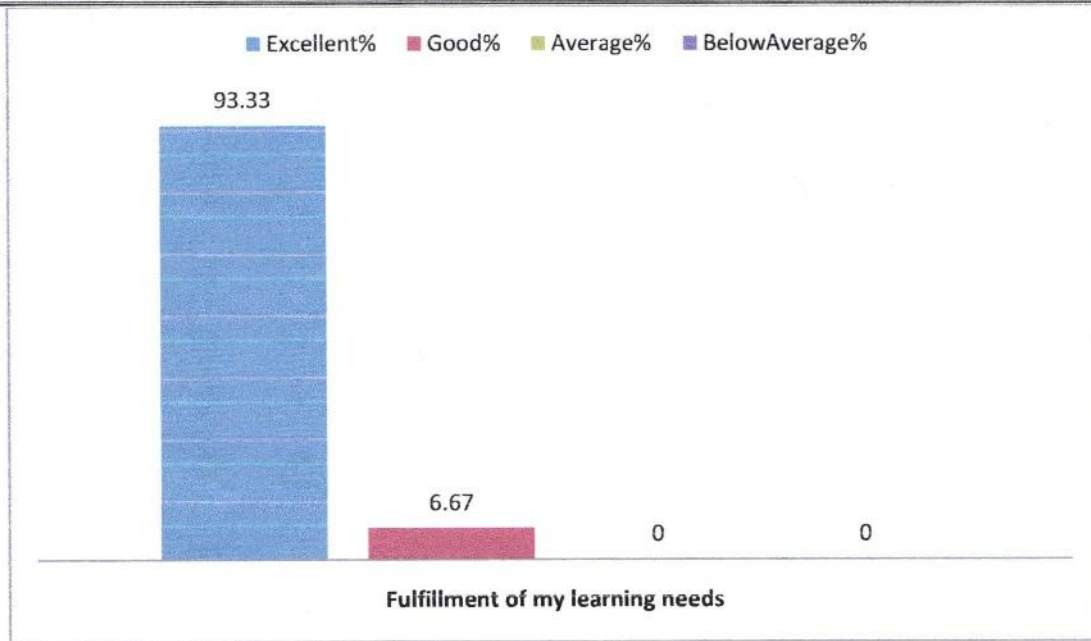
Sr. NO	PARAMETERS	Excellent%	Good %	Average %	Below Average %
1	Fulfillment of my learning needs	93.33	6.67	0	0
2	Applicability of the curriculum to real life situations	73.33	26.67	0	0
3	Clarity about the course objectives	63.33	36.67	0	0
4	Weightage given to employability	33.33	66.67	0	0
5	Weightage given to skill development	66.67	33.33	0	0
6	Structure of the syllabus	80.00	20.00	0	0
7	Difficulty level of the course content	63.33	36.67	0	0
8	Promotion of independent thinking by curriculum	70.00	30.00	0	0
9	Exposure to new knowledge and practices	76.67	23.33	0	0
10	Weightage to practical /field work	93.33	6.67	0	0
11	Creation of interest to pursue higher education	43.33	90.00	0	0
12	Overall Rating	46.67	53.33	0	0

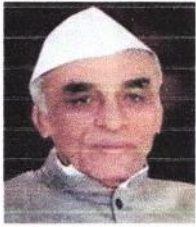


M.S.P.Mandal's
SUNDERRAO SOLANKE MAHAVIDYALAYA
MAJALGAON, DIST.BEED (MH)-431131
NAAC Re-Accredited "A" Grade



Feedback Analysis

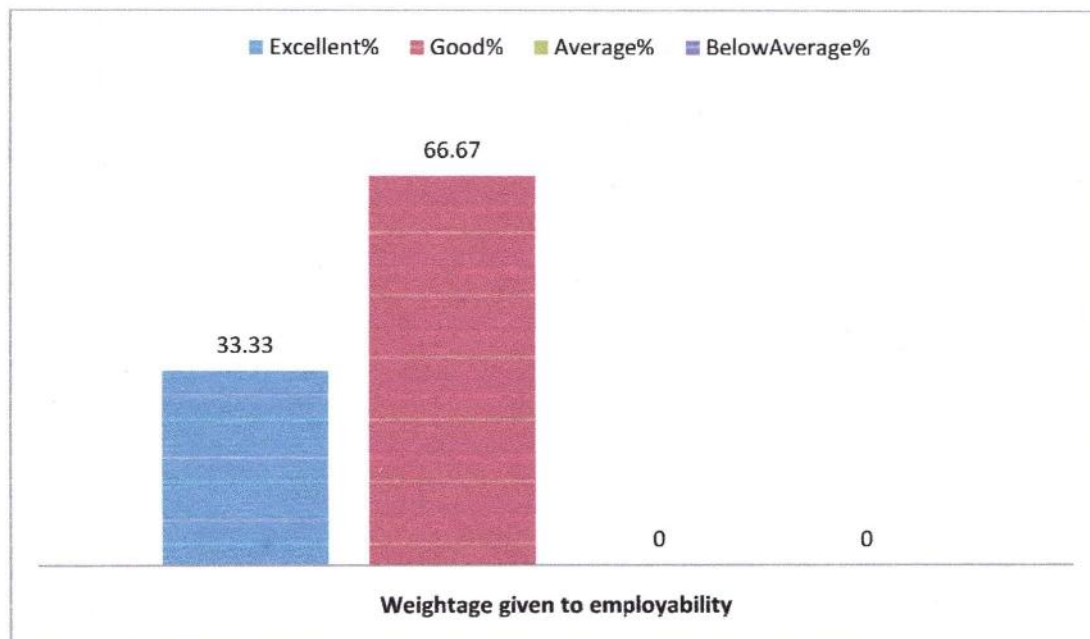
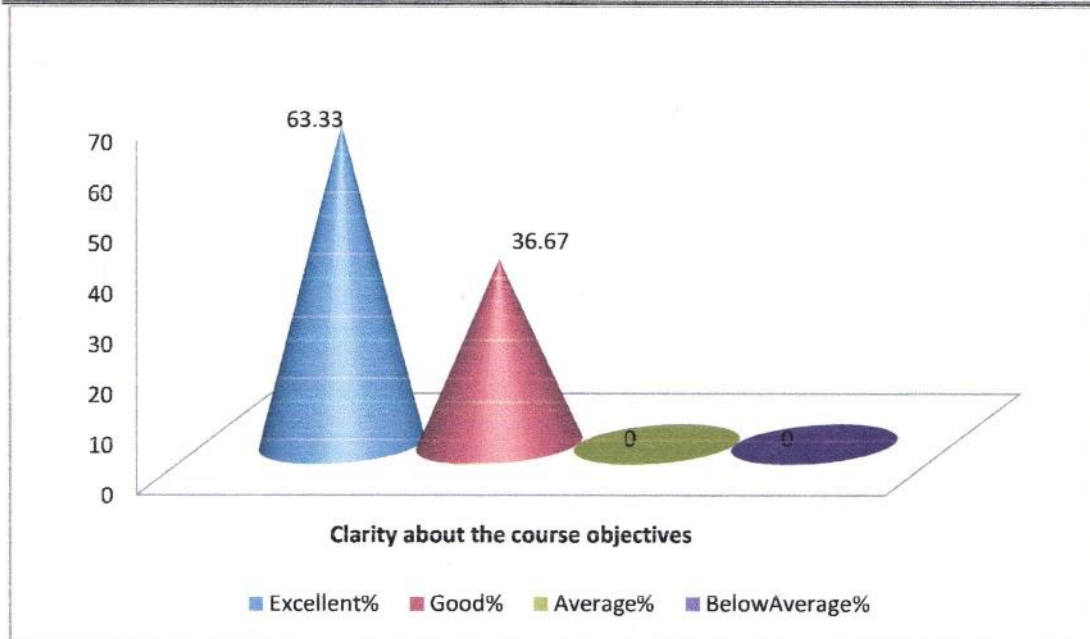


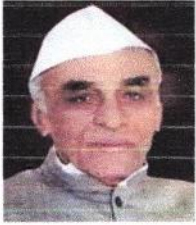


M.S.P.Mandal's
SUNDERRAO SOLANKE MAHAVIDYALAYA
MAJALGAON, DIST.BEED (MH)-431131
NAAC Re-Accredited "A" Grade



Feedback Analysis





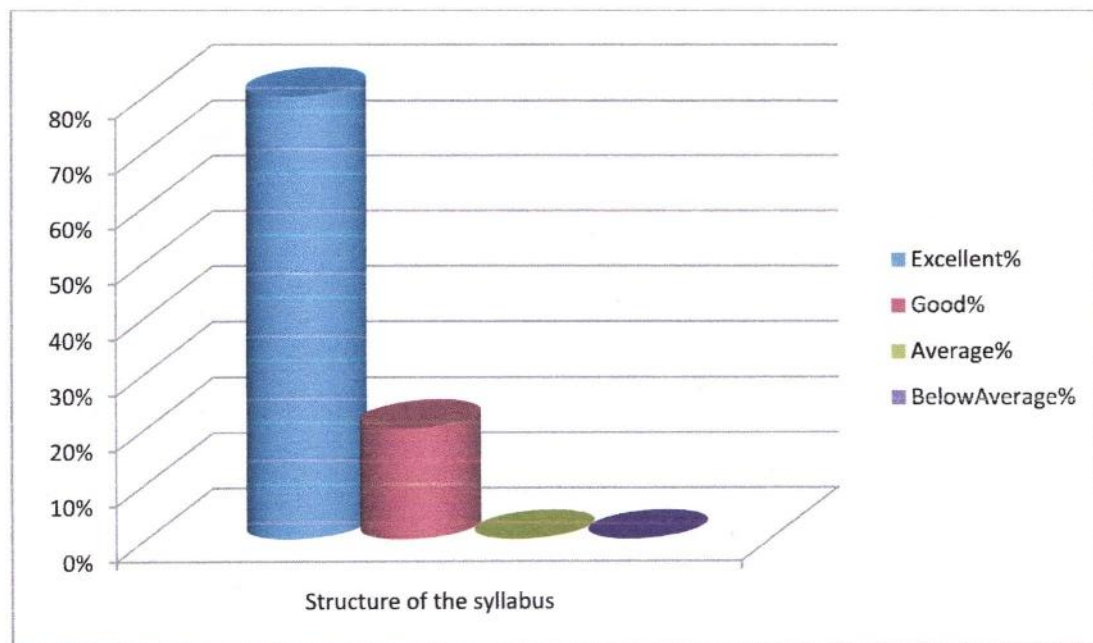
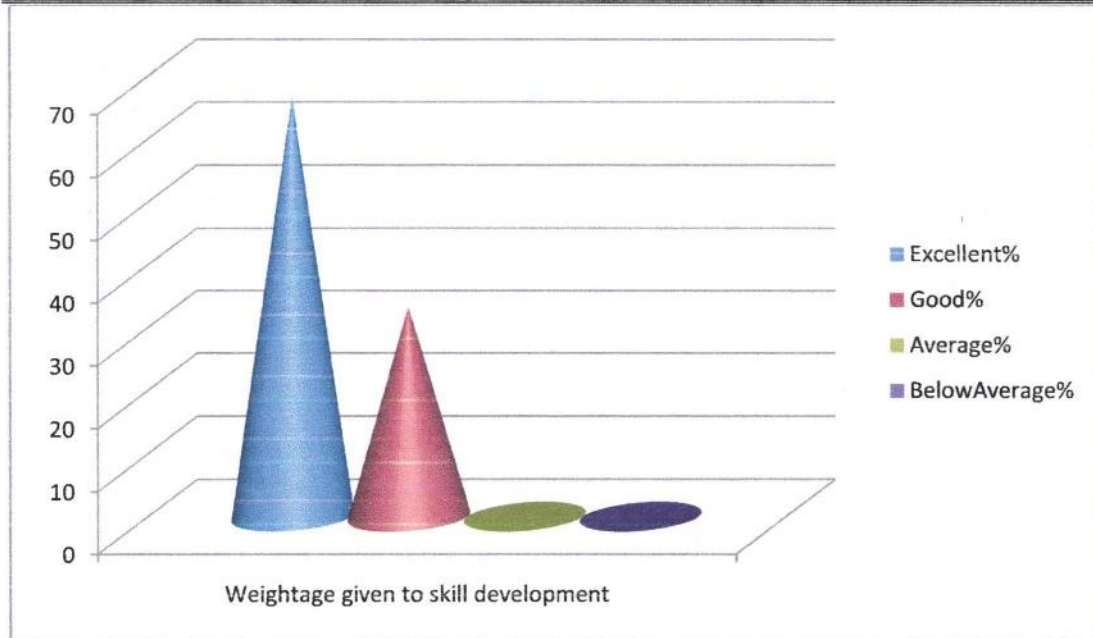
M.S.P.Mandal's
SUNDERRAO SOLANKE MAHAVIDYALAYA

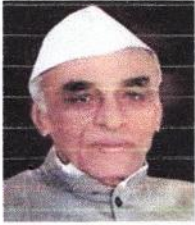
MAJALGAON, DIST.BEED (MH)-431131

NAAC Re-Accredited "A" Grade



Feedback Analysis

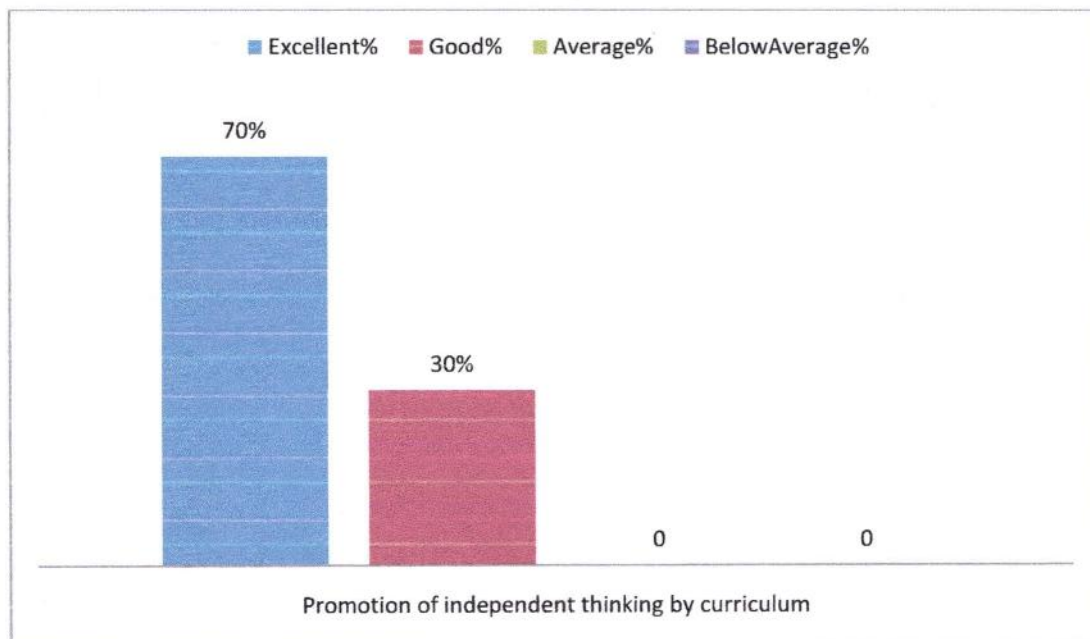
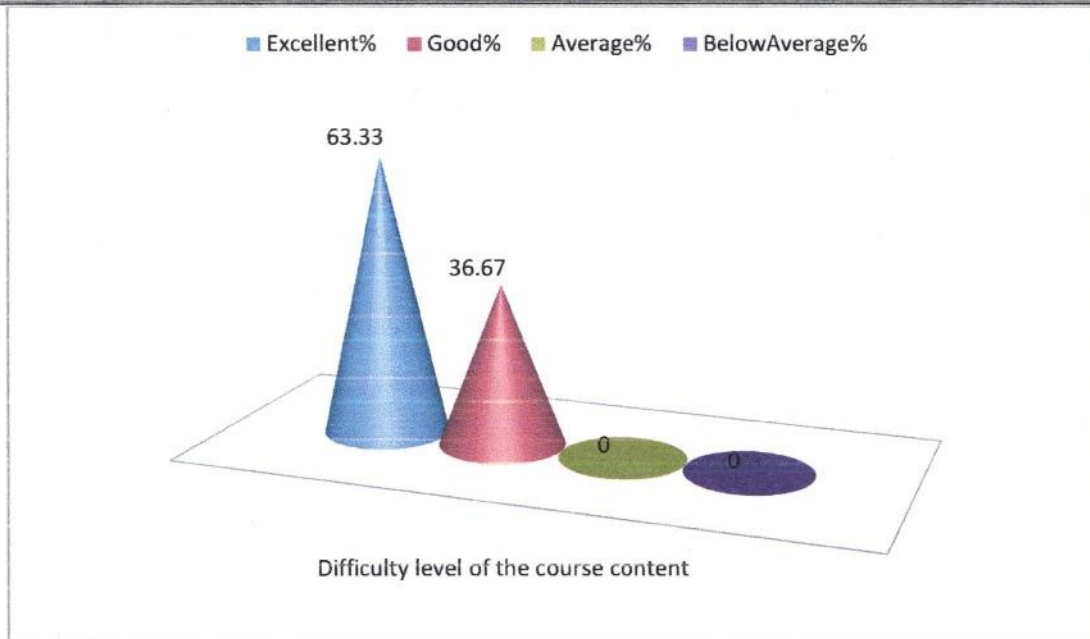


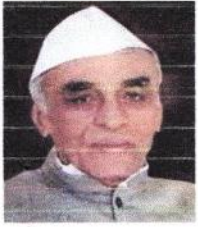


M.S.P.Mandal's
SUNDERRAO SOLANKE MAHAVIDYALAYA
MAJALGAON, DIST.BEED (MH)-431131
NAAC Re-Accredited "A" Grade



Feedback Analysis

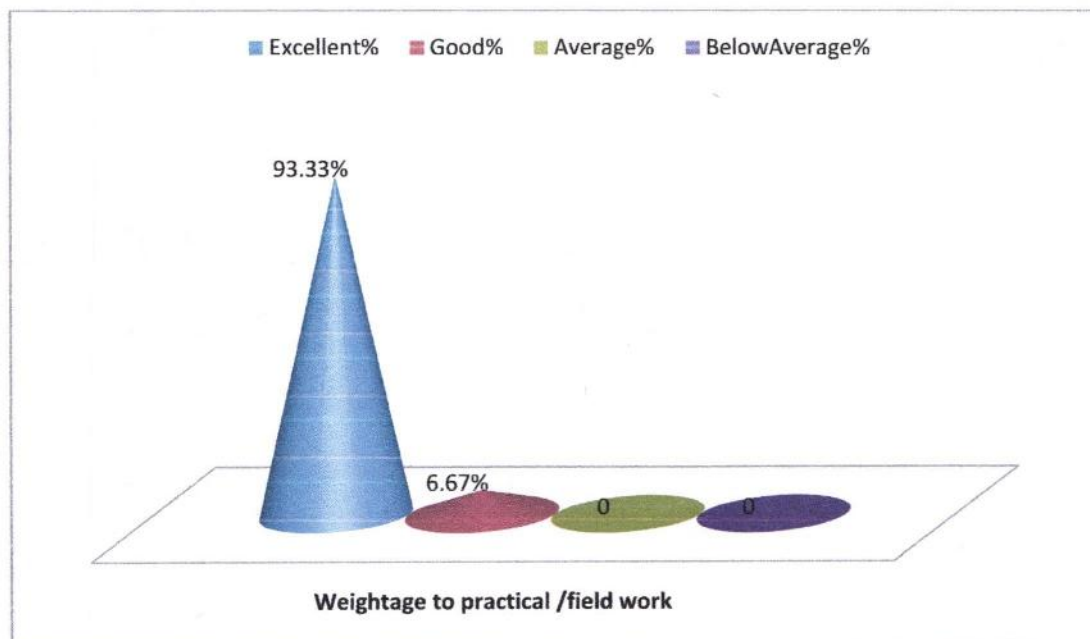
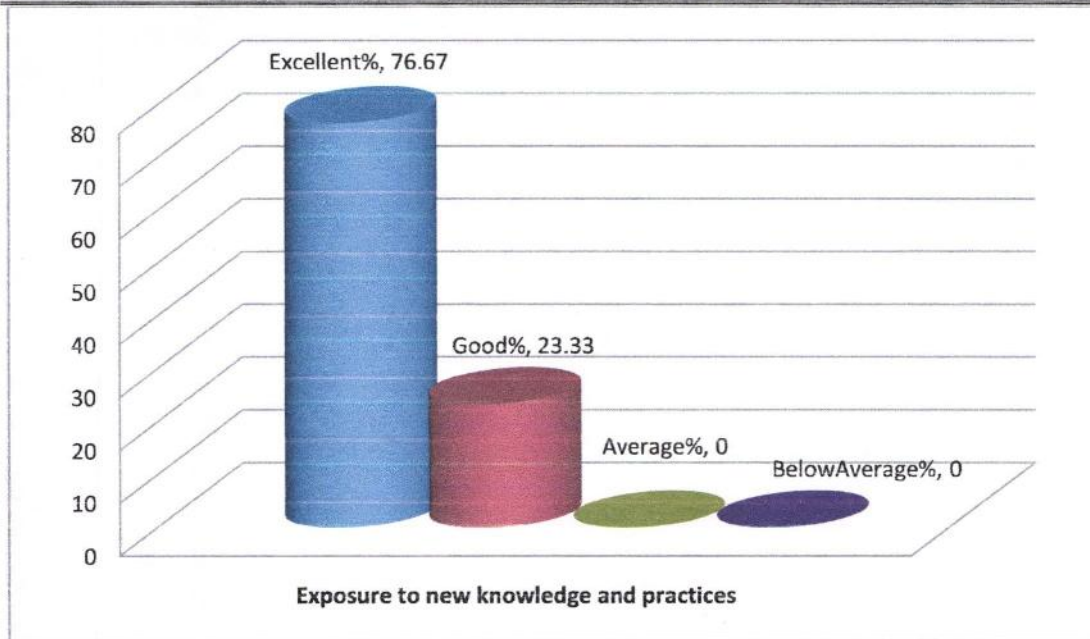


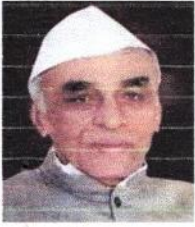


M.S.P.Mandal's
SUNDERRAO SOLANKE MAHAVIDYALAYA
MAJALGAON, DIST.BEED (MH)-431131
NAAC Re-Accredited "A" Grade



Feedback Analysis





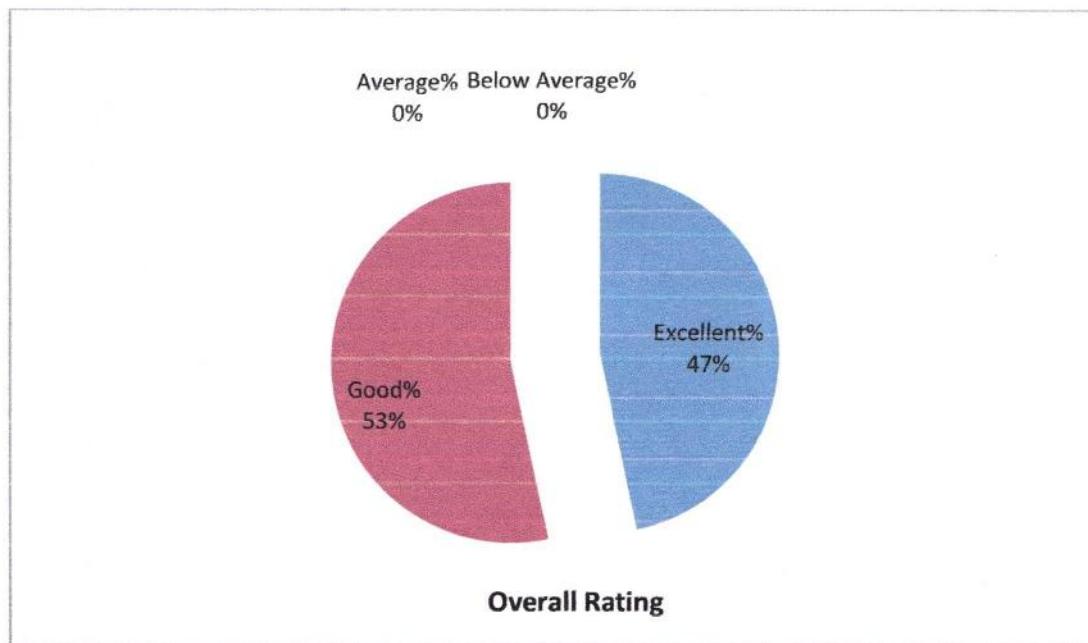
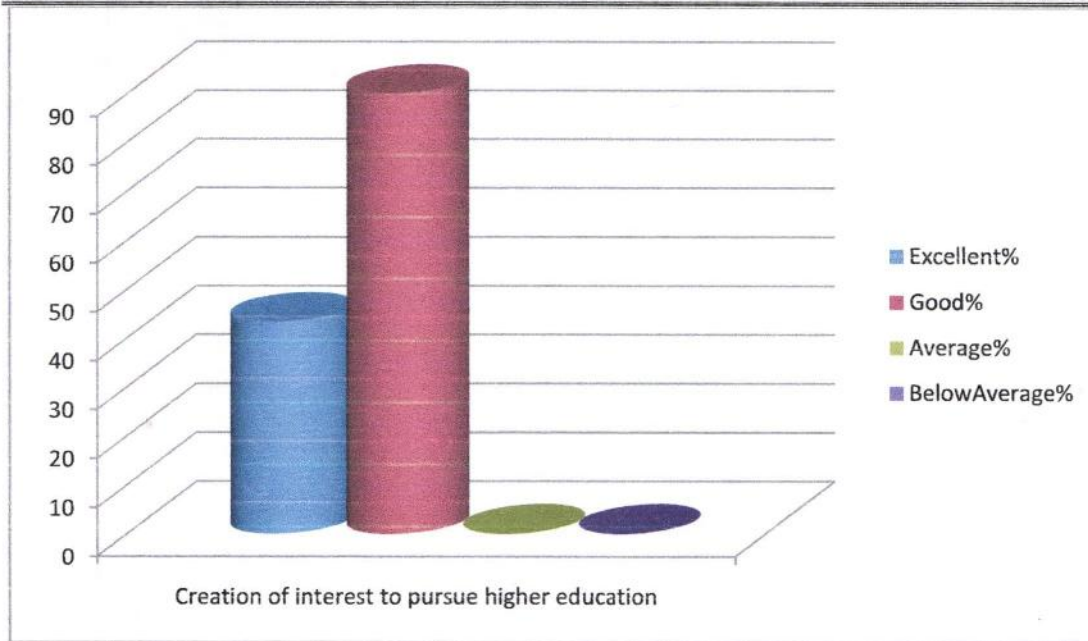
M.S.P.Mandal's
SUNDERRAO SOLANKE MAHAVIDYALAYA

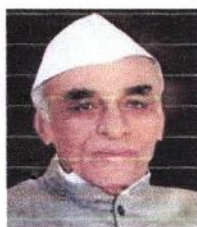
MAJALGAON, DIST.BEED (MH)-431131

NAAC Re-Accredited "A" Grade



Feedback Analysis





M.S.P.Mandal's
SUNDERRAO SOLANKE MAHAVIDYALAYA

MAJALGAON, DIST.BEED (MH)-431131

NAAC Re-Accredited "A" Grade



Feedback Analysis

Respondent details

Responses: 30

1. Fulfillment of my learning needs

It is found that the maximum (28) of student's respondent opined fulfillment of my learning needs found excellent, 02 think as good.

2. Applicability of the curriculum to real life situations

The highest (22) respondents from the total students noted applicability of the curriculum to real life situations excellent, followed by 08 remarked as good.

3. Clarity about the course objectives

From the total 30 respondents, (19) respondents opined that clarity about the course objectives is excellent, 11 opined it is good.

4. Weightage given to employability

From the total 30 respondents, 10 respondents opined weightage given to employability is excellent, 20 opined it is good.

5. Weightage given to skill development

It is found that the 20 number of respondents opined that weightage given to skill development is excellent, 10 thinks in this case as good.

6. Structure of the syllabus

The collected information indicate that the maximum number of respondents (24) found Structure of the syllabus is excellent, followed by 6 says it is good.

7. Difficulty level of the course content

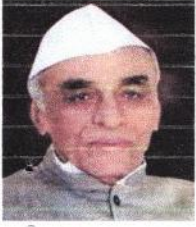
From the total 30 respondents, highest (19) of the respondents opined difficulty level of the course content found excellent, 11 think as good.

8. Promotion of independent thinking by curriculum

It is found that the highest (21) number of respondents opined that promotion of independent thinking by curriculum is excellent, 09 thinks in this case as good.

9. Exposure to new knowledge and practices

It is found that the maximum (23) of respondent opined that exposure to new knowledge and practices found excellent, 07 think as good.



M.S.P.Mandal's
SUNDERRAO SOLANKE MAHAVIDYALAYA

MAJALGAON, DIST.BEED (MH)-431131

NAAC Re-Accredited "A" Grade



Feedback Analysis

10. Weightage to practical /field work

The highest (28) respondents from the total students noted that the Weightage to practical /field work is excellent, followed by 02 remarked as good.

11. Creation of interest to pursue higher education

From the total 30 respondents, majority (13) of student respondents opined that creation of interest to pursue higher education are excellent, 17 opined it is good.

12. Overall rating

It is found that (14) of the respondent opined that the Overall rating found excellent, 26 think as good.

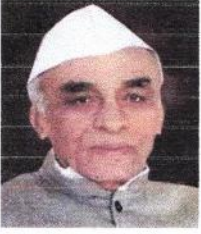
Coordinator

Internal Quality Assurance Cell (IQAC)
Sunderrao Solanke Mahavidyalaya,
Majalgaon, Dist.Beed (MS)



PRINCIPAL

Sunderrao Solanke Mahavidyalaya
Majalgaon Dist. Beed (M.S.)



M.S.P.Mandal's
SUNDERRAO SOLANKE MAHAVIDYALAYA

MAJALGAON, DIST.BEED (MH)-431131

NAAC Re-Accredited "A" Grade



Feedback Analysis

Marathwada Shikshan Prasarak Mandal's

**Sunderrao Solanke Mahavidyalaya, Majalgaon
Dist. Beed**

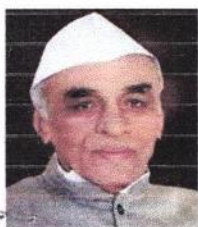


INTERNAL QUALITY ASSURANCE CELL



FEEDBACK ANALYSIS

2019-2020



M.S.P.Mandal's
SUNDERRAO SOLANKE MAHAVIDYALAYA

MAJALGAON, DIST.BEED (MH)-431131

NAAC Re-Accredited "A" Grade

Feedback Analysis

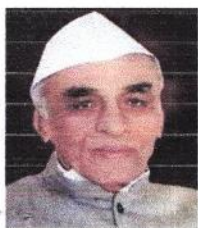
A REPORT ON FEEDBACK FROM TEACHERS ON CURRICULUM

ACADEMIC YEAR 2019 – 2020

Feedback on curriculum collected from the teachers for academic year 2019-2020 on various important aspects which include:

- 1 Applicability of the syllabus to local developmental needs
- 2 Difficulty level of the syllabus
- 3 Clarity about the course objectives
- 4 Weightage given to employability
- 5 Depth of the Course Content
- 6 Incorporation of latest knowledge & information
- 7 Research Possibilities
- 8 Mechanism used for development/ revision of curriculum by BoS
- 9 Weightage given to learning values like knowledge, skills, analytical abilities, etc.
- 10 Relevance of course outcomes
- 11 Quality and clarity of textual/ study/ reference material suggested
- 12 Overall rating

17 Teachers participated in the survey consisting of 12 aspects/questions on the Curriculum.



M.S.P.Mandal's
SUNDERRAO SOLANKE MAHAVIDYALAYA

MAJALGAON, DIST.BEED (MH)-431131

NAAC Re-Accredited "A" Grade



Feedback Analysis

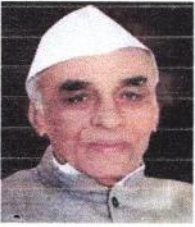
M.S.P.Mandal's

Sunderrao Solanke Mahavidyalaya Majalgaon

TEACHER FEEDBACK ON CURRICULUM

ACADEMIC YEAR -2019-20

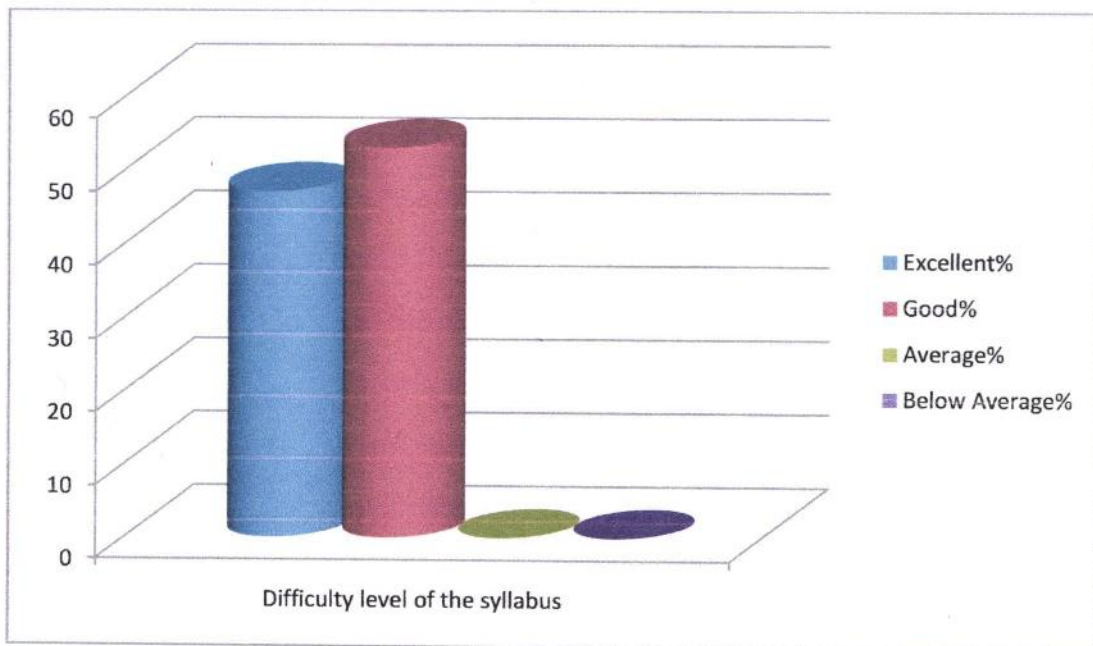
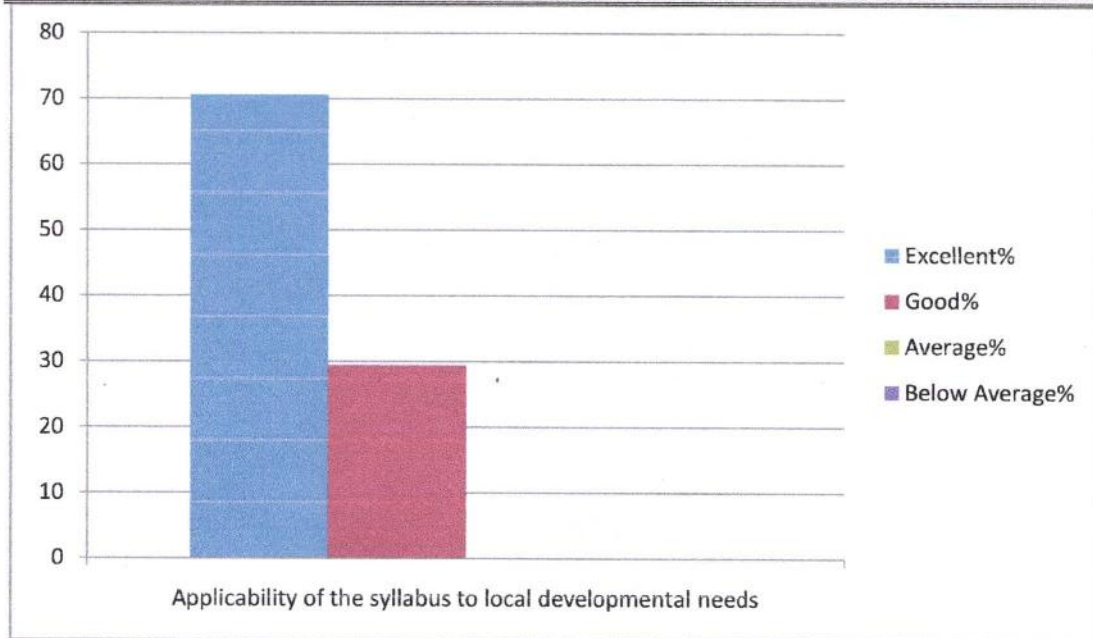
Sr. NO.	PARAMETERS	Excell ent%	Good %	Aver age%	Below Average %
1	Applicability of the syllabus to local developmental needs	70.59	29.41	00	00
2	Difficulty level of the syllabus	47.06	52.94	00	00
3	Clarity about the course objectives	76.47	23.53	00	00
4	Weightage given to employability	70.59	29.41	00	00
5	Depth of the Course Content	64.71	35.29	00	00
6	Incorporation of latest knowledge & information	52.94	47.06	00	00
7	Research Possibilities	70.59	29.41	00	00
8	Mechanism used for development/ revision of curriculum by BoS	41.18	58.82	00	00
9	Weightage given to learning values like knowledge, skills, analytical abilities, etc.	76.47	23.53	00	00
10	Relevance of course outcomes	52.94	47.06	00	00
11	Quality and clarity of textual/ study/ reference material suggested	76.47	23.53	00	00
12	Overall rating	17.65	23.53	00	00

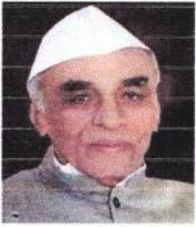


M.S.P.Mandal's
SUNDERRAO SOLANKE MAHAVIDYALAYA
MAJALGAON, DIST.BEED (MH)-431131
NAAC Re-Accredited "A" Grade



Feedback Analysis





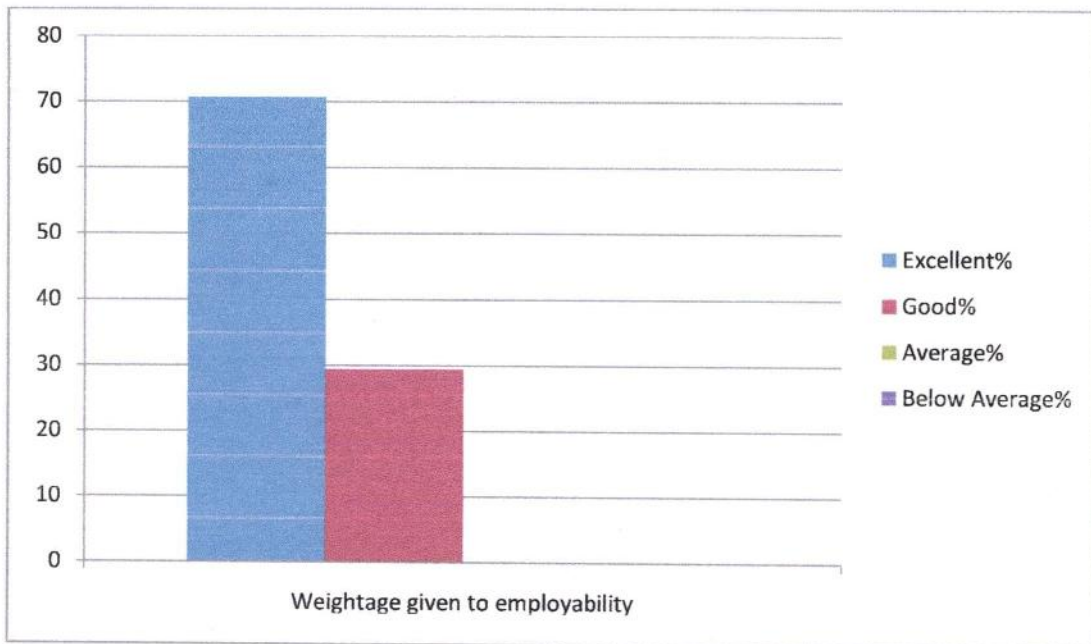
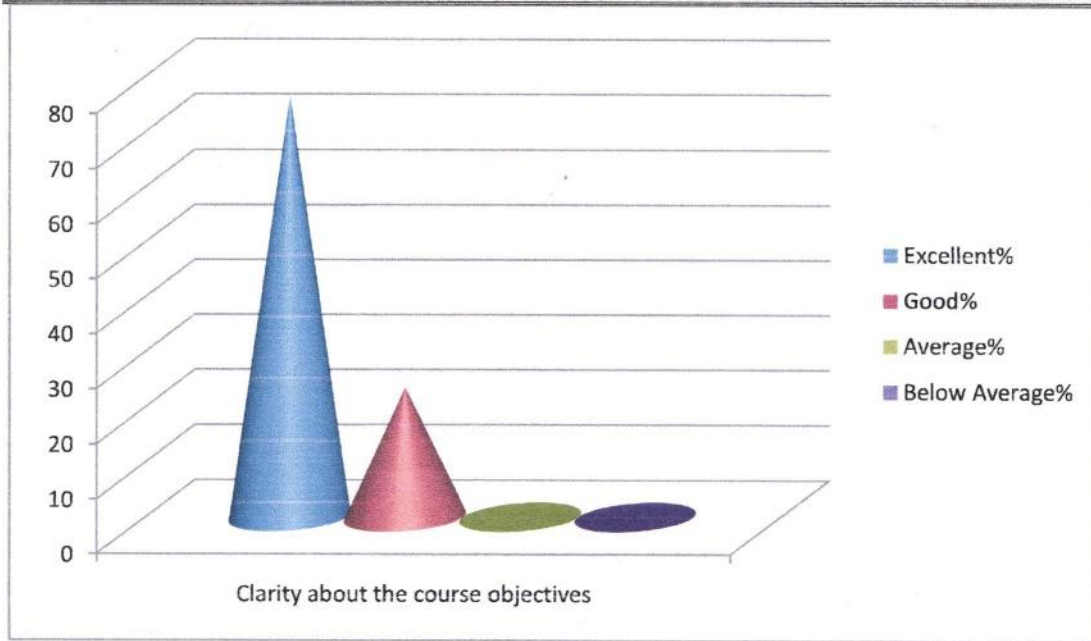
M.S.P.Mandal's
SUNDERRAO SOLANKE MAHAVIDYALAYA

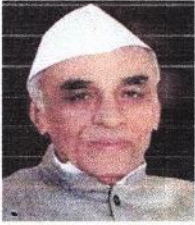
MAJALGAON, DIST.BEED (MH)-431131

NAAC Re-Accredited "A" Grade



Feedback Analysis

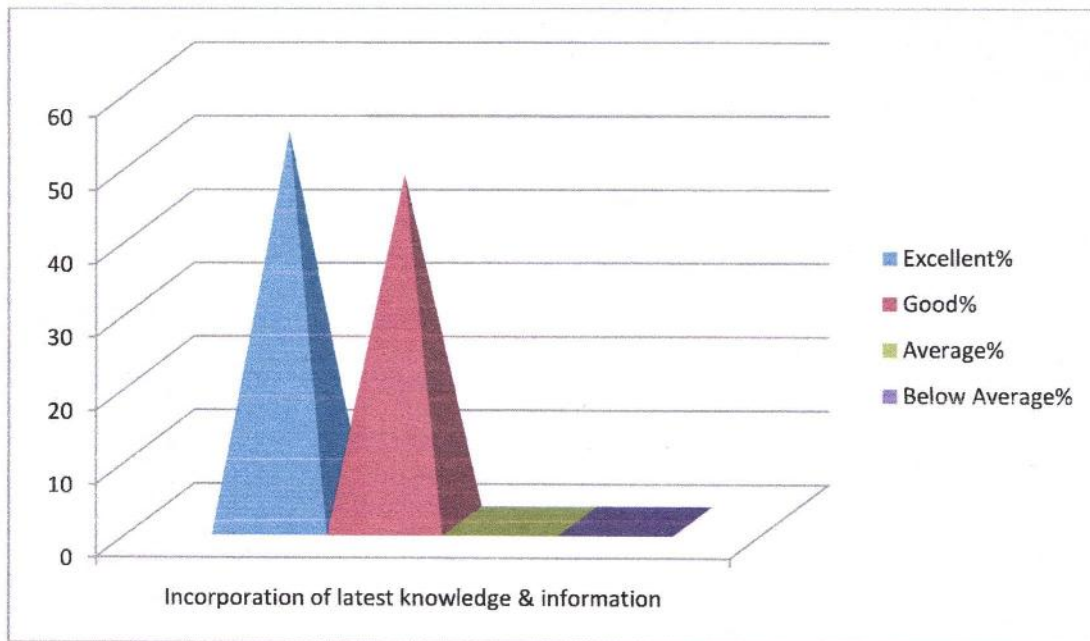
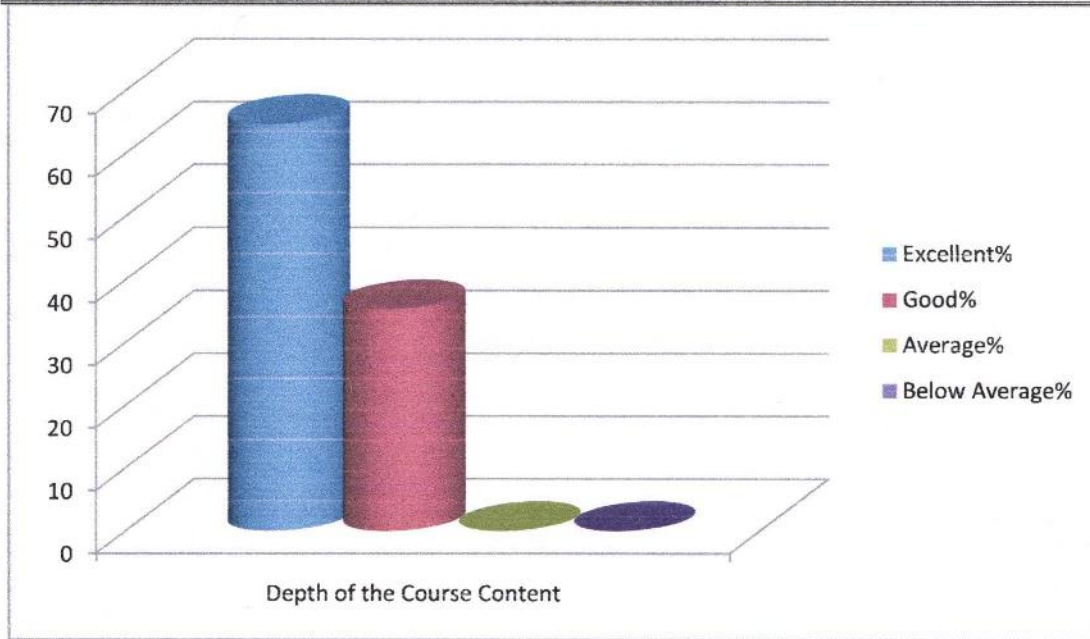


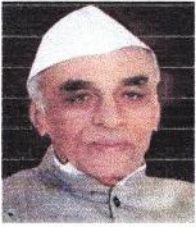


M.S.P.Mandal's
SUNDERRAO SOLANKE MAHAVIDYALAYA
MAJALGAON, DIST.BEED (MH)-431131
NAAC Re-Accredited "A" Grade



Feedback Analysis

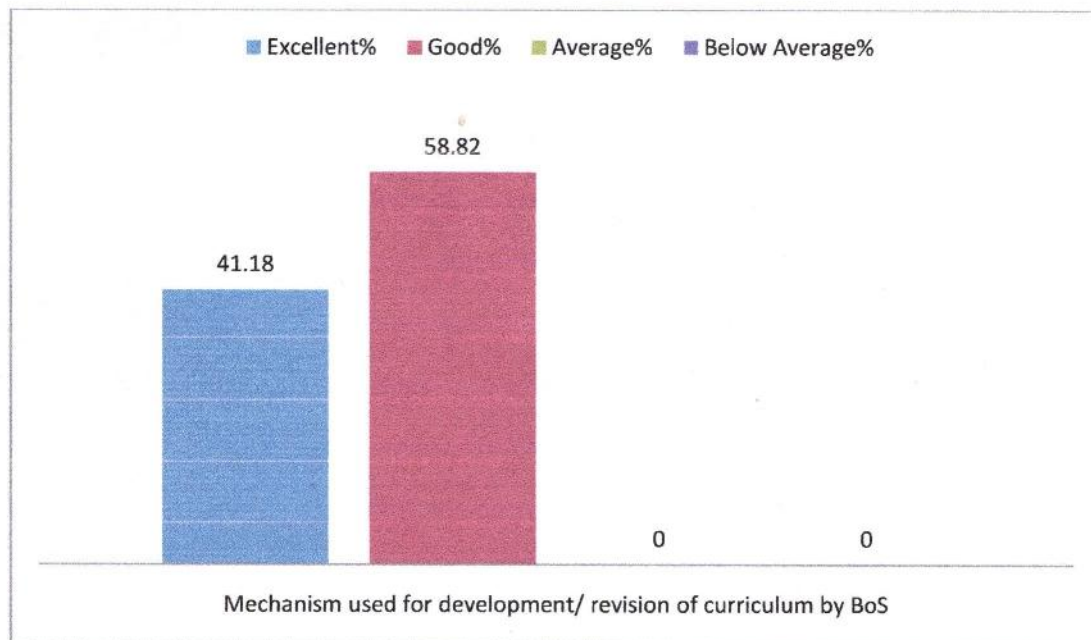
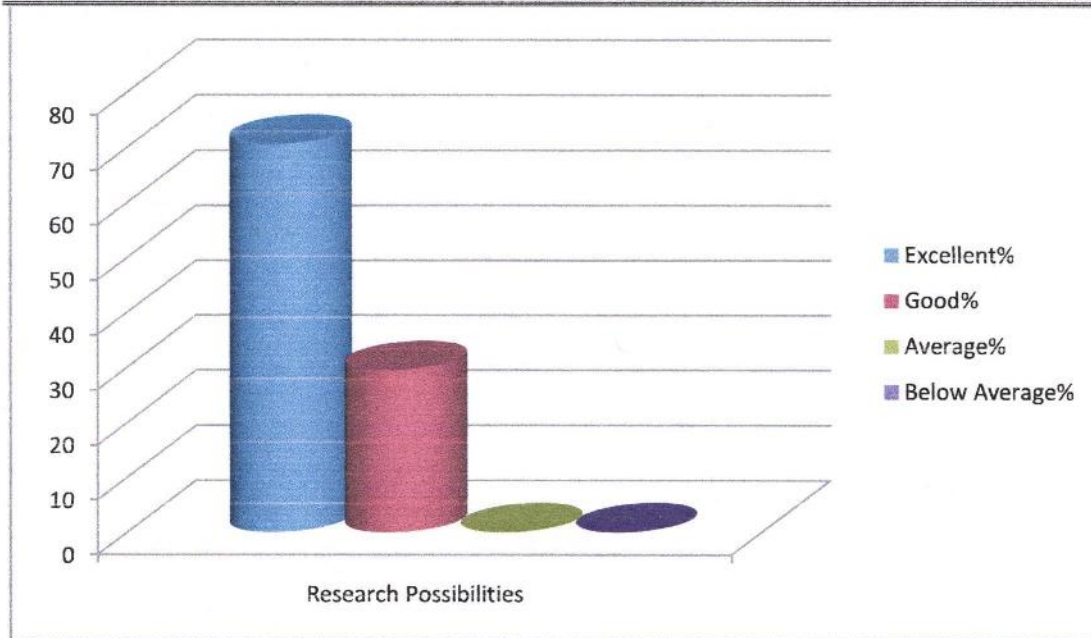


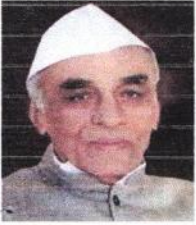


M.S.P.Mandal's
SUNDERRAO SOLANKE MAHAVIDYALAYA
MAJALGAON, DIST.BEED (MH)-431131
NAAC Re-Accredited "A" Grade



Feedback Analysis

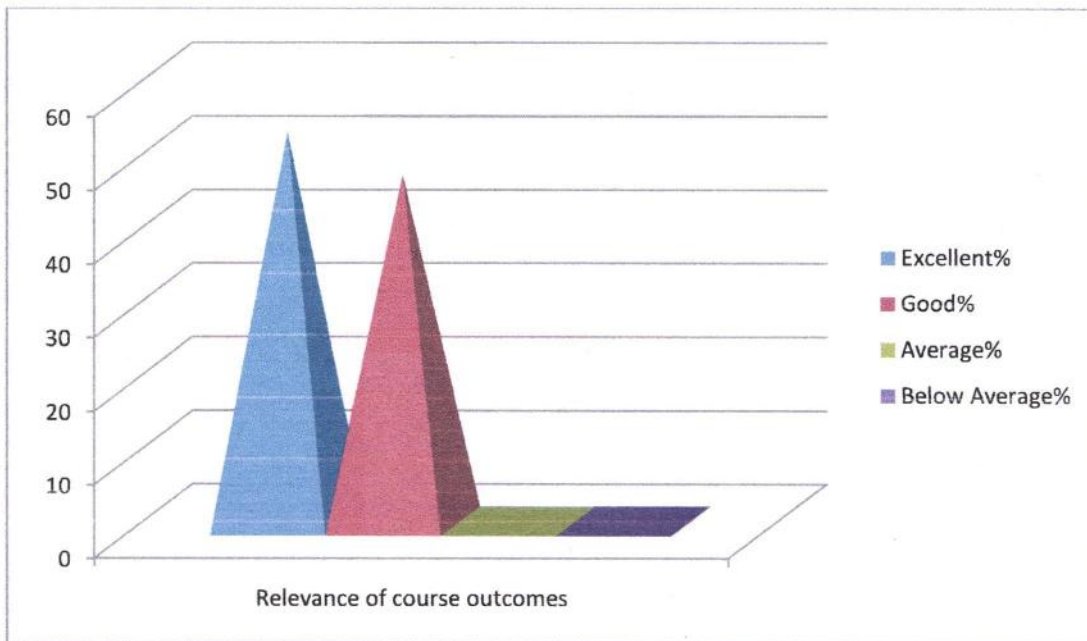
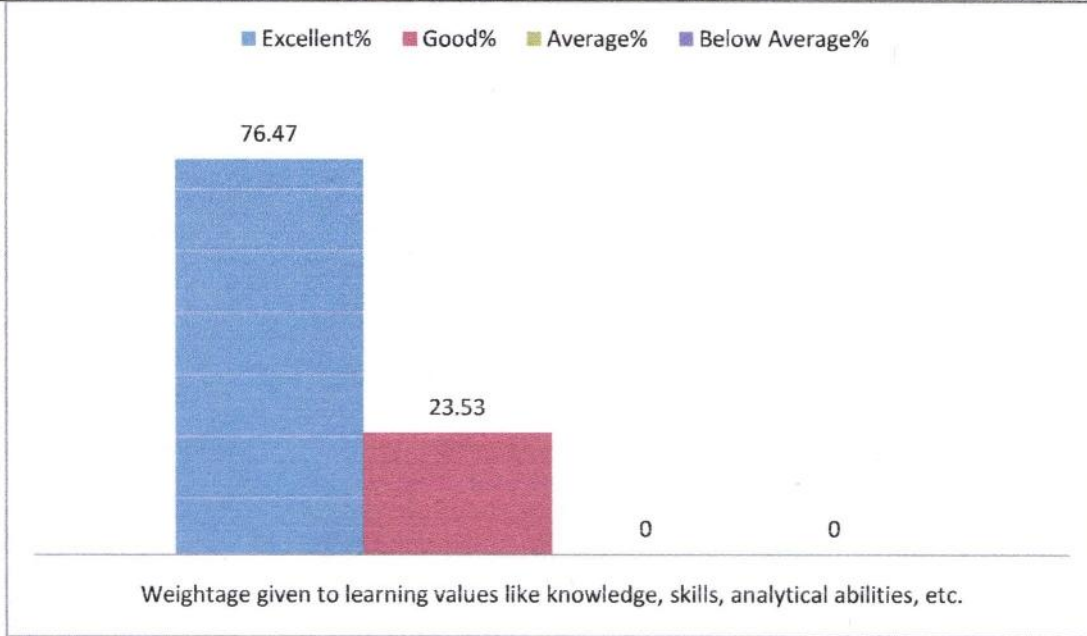


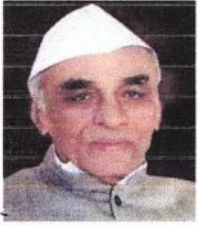


M.S.P.Mandal's
SUNDERRAO SOLANKE MAHAVIDYALAYA
MAJALGAON, DIST.BEED (MH)-431131
NAAC Re-Accredited "A" Grade



Feedback Analysis





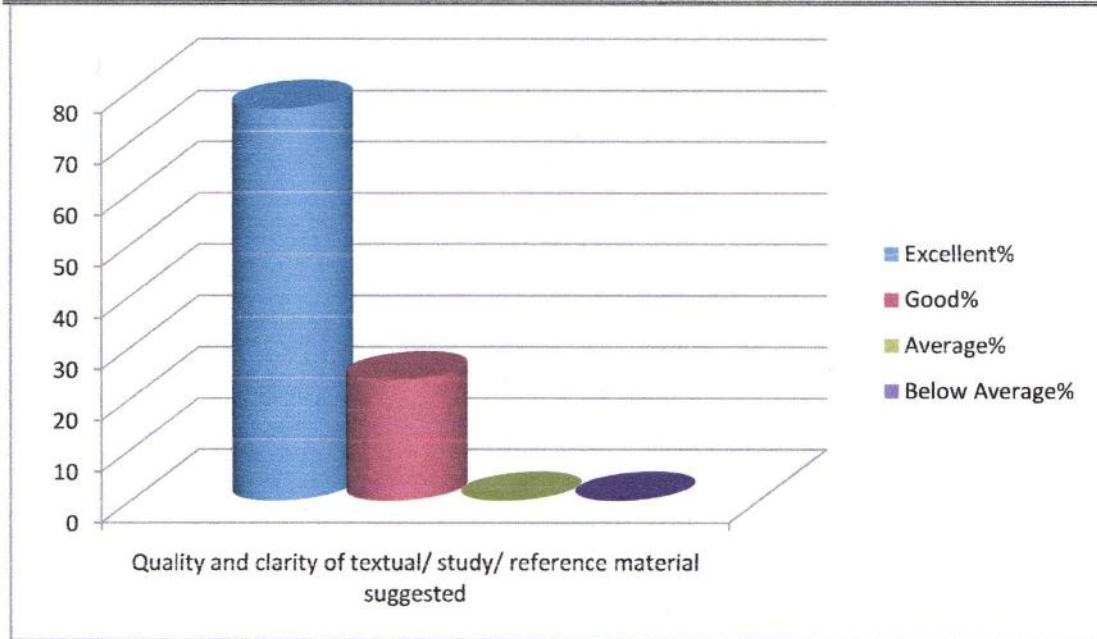
M.S.P.Mandal's
SUNDERRAO SOLANKE MAHAVIDYALAYA

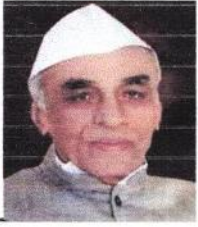
MAJALGAON, DIST.BEED (MH)-431131

NAAC Re-Accredited "A" Grade



Feedback Analysis





M.S.P.Mandal's
SUNDERRAO SOLANKE MAHAVIDYALAYA

MAJALGAON, DIST.BEED (MH)-431131

NAAC Re-Accredited "A" Grade



Feedback Analysis

Respondent details

Responses: 17

1. Applicability of the syllabus to local developmental needs

It is found that the maximum (12) of teacher's respondent opined that the applicability of the syllabus to local developmental needs found excellent, 05 think as good.

2. Difficulty level of the syllabus

The (08) respondents from the total respondents noted that the difficulty level of the syllabus is excellent; followed by 09 remarked as good.

3. Clarity about the course objectives

From the total 17 respondents, majority (13) of teacher respondents opined that clarity about the course objectives are excellent, 04 opined it is good.

4. Weightage given to employability

From the total 17 respondents, (12) of respondents opined weightage given to employability is excellent, 05 opined it is good.

5. Depth of the Course Content

It is found that the (11) number of respondents opined that depth of the course content is excellent, 06 think in this case as good.

6. Incorporation of latest knowledge & information

The collected information indicate that the maximum number of respondents (09) found the incorporation of latest knowledge & information is excellent, followed by 08 says it is good.

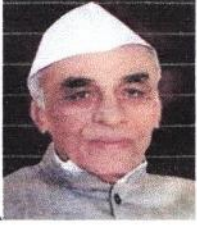
7. Research Possibilities

From the total 17 respondents, highest (12) of the respondents opined that research possibilities found excellent, 05 think as good.

8. Mechanism used for development/ revision of curriculum by BoS

It is found that the (07) number of respondents opined that mechanism used for development/ revision of curriculum by BoS excellent, 10 think in this case as good.

9. Weightage given to learning values like knowledge, skills, analytical abilities, etc.



M.S.P.Mandal's
SUNDERRAO SOLANKE MAHAVIDYALAYA

MAJALGAON, DIST.BEED (MH)-431131

NAAC Re-Accredited "A" Grade



Feedback Analysis

It is found that the (13) of respondent opined that weightage given to learning values like knowledge, skills, analytical abilities, etc. are excellent, 04 thinks good about it.

10. Relevance of course outcomes

The highest (09) respondents noted that relevance of course outcomes is excellent; followed by 08 remarked as good.

11. Quality and clarity of textual/ study/ reference material suggested

It is found that the (13) of the respondents opined that quality and clarity of textual/ study/ reference material suggested is excellent, 04 opined it is good.

12. Overall rating

It is found that the (13) of student's respondent opined that the overall rating of the college found is excellent, 04 think good about it.

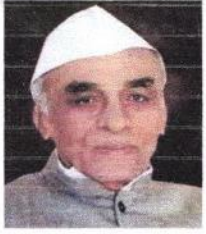
Coordinator

Internal Quality Assurance Cell (IQAC)
Sunderrao Solanke Mahavidyalaya,
Majalgaon, Dist.Beed (MS)



PRINCIPAL

Sunderrao Solanke Mahavidyalaya
Majalgaon Dist. Beed (M.S.)



M.S.P.Mandal's
SUNDERRAO SOLANKE MAHAVIDYALAYA

MAJALGAON, DIST.BEED (MH)-431131

NAAC Re-Accredited "A" Grade



Feedback Analysis

Marathwada Shikshan Prasarak Mandal's

**Sunderrao Solanke Mahavidyalaya, Majalgaon
Dist. Beed**

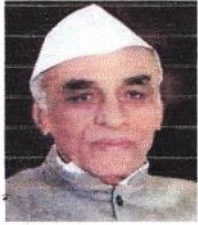


INTERNAL QUALITY ASSURANCE CELL



FEEDBACK ANALYSIS

2019-2020



M.S.P.Mandal's
SUNDERRAO SOLANKE MAHAVIDYALAYA

MAJALGAON, DIST.BEED (MH)-431131

NAAC Re-Accredited "A" Grade

Feedback Analysis

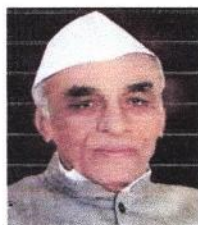
A REPORT ON FEEDBACK FROM SUBJECT EXPERTS ON CURRICULUM

ACADEMIC YEAR 2019 – 2020

Feedback on curriculum collected from the subject expert for academic year 2019-2020 on various important aspects which include:

- 1 Applicability of the syllabus to local developmental needs
- 2 Difficulty level of the syllabus
- 3 Clarity about the course objectives
- 4 Weightage given to employability
- 5 Depth of the Course Content
- 6 Incorporation of latest knowledge & information
- 7 Research Possibilities
- 8 Mechanism used for development/ revision of curriculum by BoS
- 9 Weightage given to learning values like knowledge, skills, analytical abilities, etc.
- 10 Relevance of course outcomes
- 11 Quality and clarity of textual/ study/ reference material suggested
- 12 Overall rating

5 Subject experts participated in the survey consisting of 12 aspects/questions on the Curriculum.



M.S.P.Mandal's
SUNDERRAO SOLANKE MAHAVIDYALAYA

MAJALGAON, DIST.BEED (MH)-431131

NAAC Re-Accredited "A" Grade



Feedback Analysis

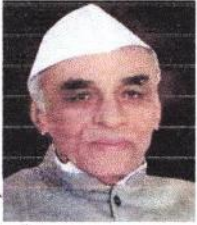
M.S.P.Mandal's

Sunderrao Solanke Mahavidyalaya Majalgaon

SUBJECT EXPERT FEEDBACK ON CURRICULUM

ACADEMIC YEAR -2019-20

Sr. NO.	PARAMETERS	Excellent	Good	Average	Below Average
1	Applicability of the syllabus to local developmental needs	60.00	20.00	20.00	0
2	Difficulty level of the syllabus	80.00	20.00	0.00	0
3	Clarity about the course objectives	80.00	20.00	0.00	0
4	Weightage given to employability	40.00	60.00	0.00	0
5	Depth of the Course Content	60.00	40.00	0.00	0
6	Incorporation of latest knowledge & information	60.00	40.00	0.00	0
7	Research Possibilities	40.00	60.00	0.00	0
8	Mechanism used for development/ revision of curriculum by BoS	60.00	40.00	0.00	0
9	Weightage given to learning values like knowledge, skills, analytical abilities, etc.	80.00	20.00	0.00	0
10	Relevance of course outcomes	100.00	0.00	0.00	0
11	Quality and clarity of textual/ study/ reference material suggested	20.00	80.00	0.00	0
12	Overall rating	60.00	40.00	0.00	0



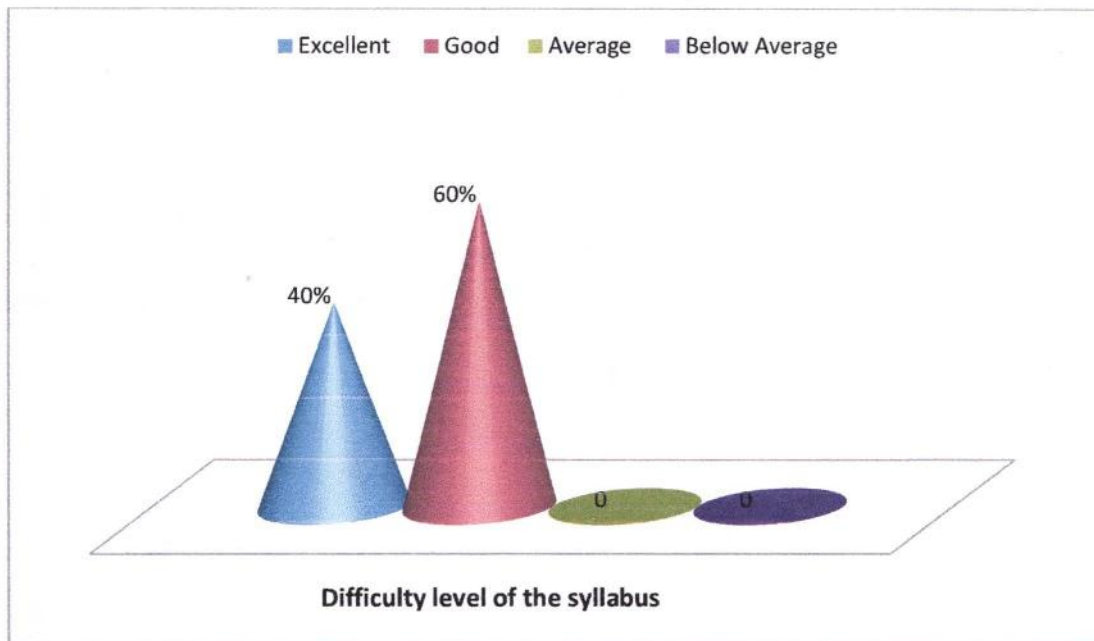
M.S.P.Mandal's
SUNDERRAO SOLANKE MAHAVIDYALAYA

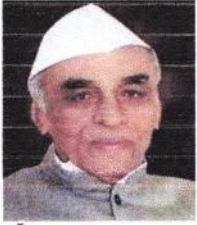
MAJALGAON, DIST.BEED (MH)-431131

NAAC Re-Accredited "A" Grade



Feedback Analysis





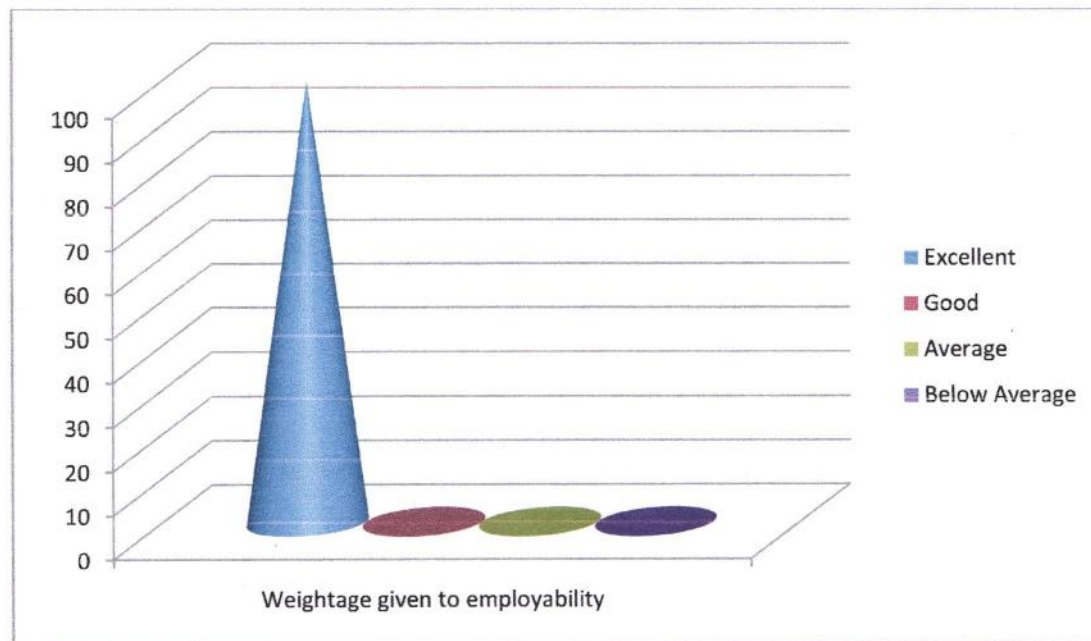
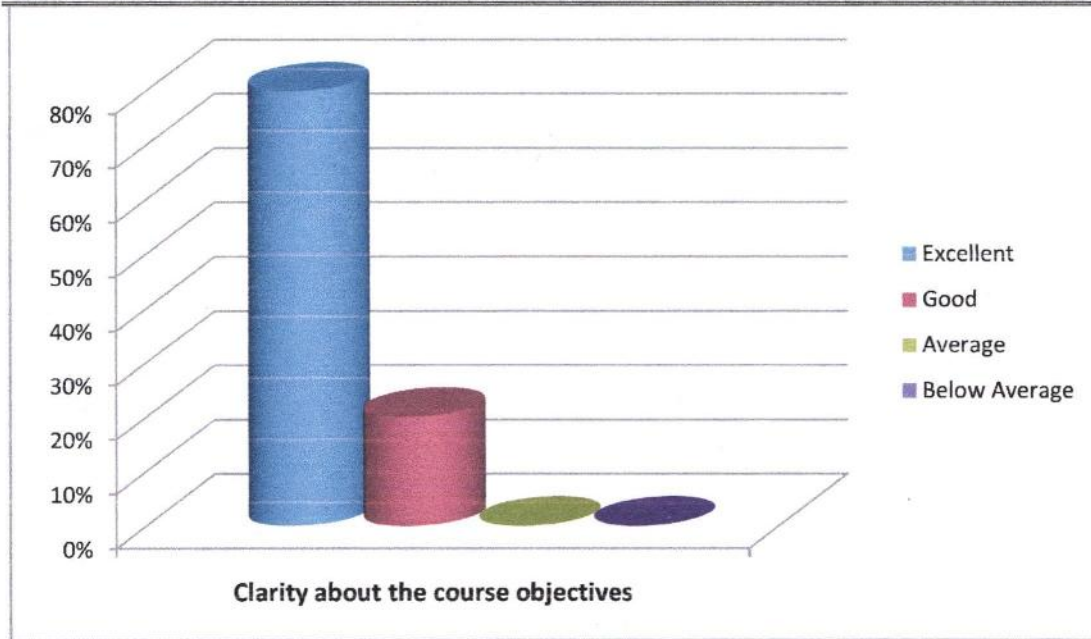
M.S.P.Mandal's
SUNDERRAO SOLANKE MAHAVIDYALAYA

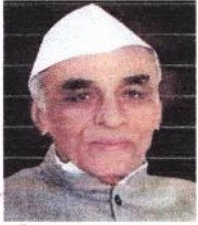
MAJALGAON, DIST.BEED (MH)-431131

NAAC Re-Accredited "A" Grade



Feedback Analysis





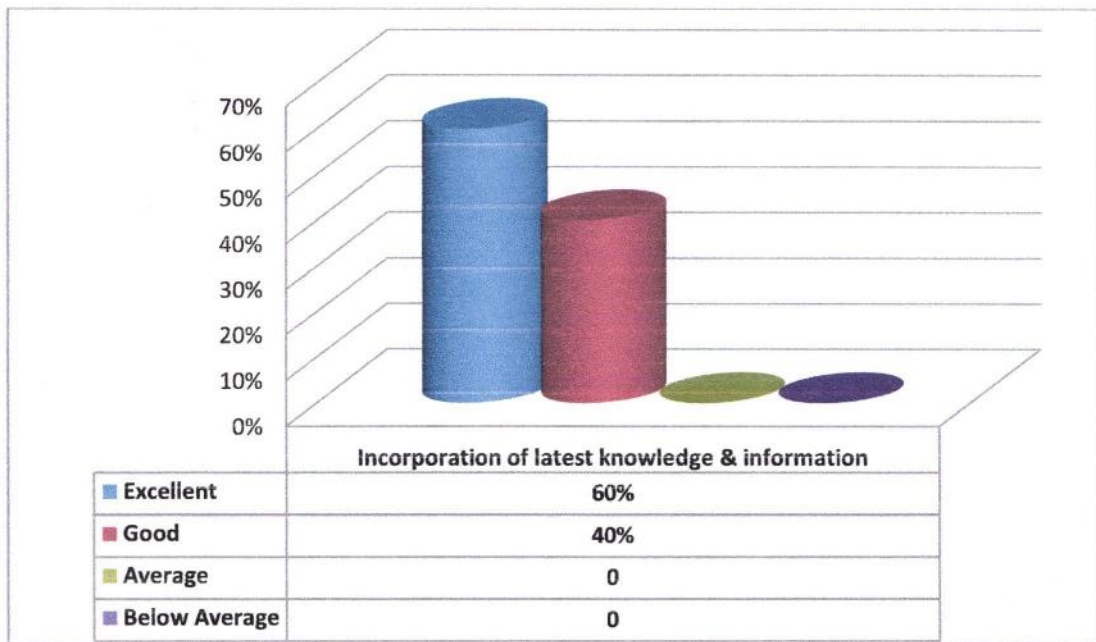
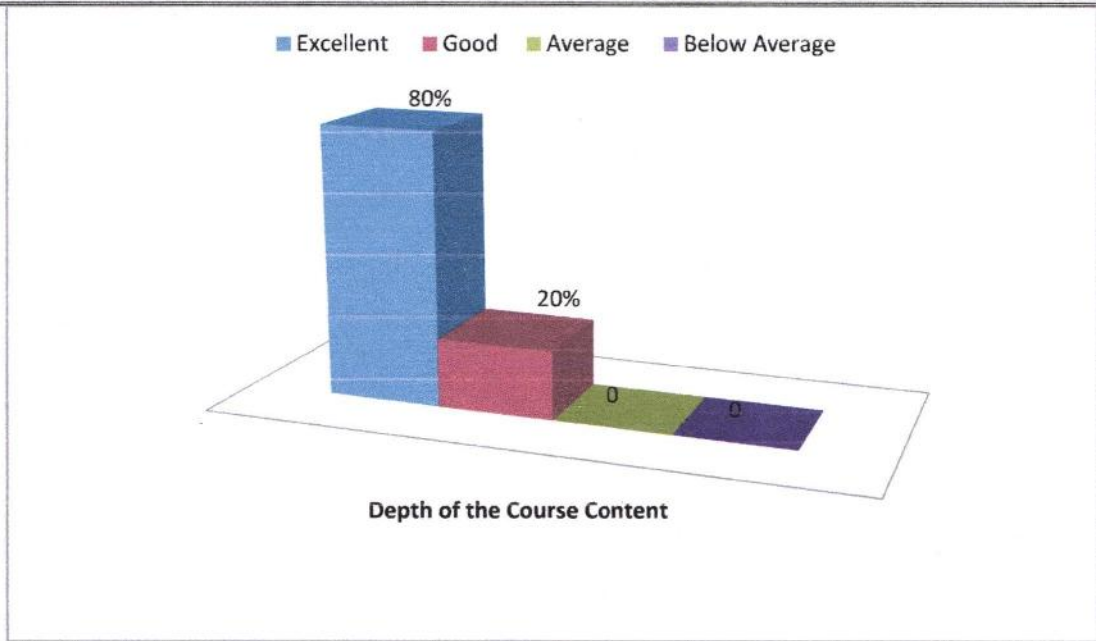
M.S.P.Mandal's
SUNDERRAO SOLANKE MAHAVIDYALAYA

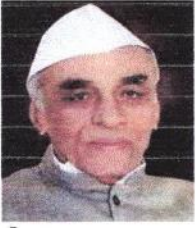
MAJALGAON, DIST.BEED (MH)-431131

NAAC Re-Accredited "A" Grade



Feedback Analysis





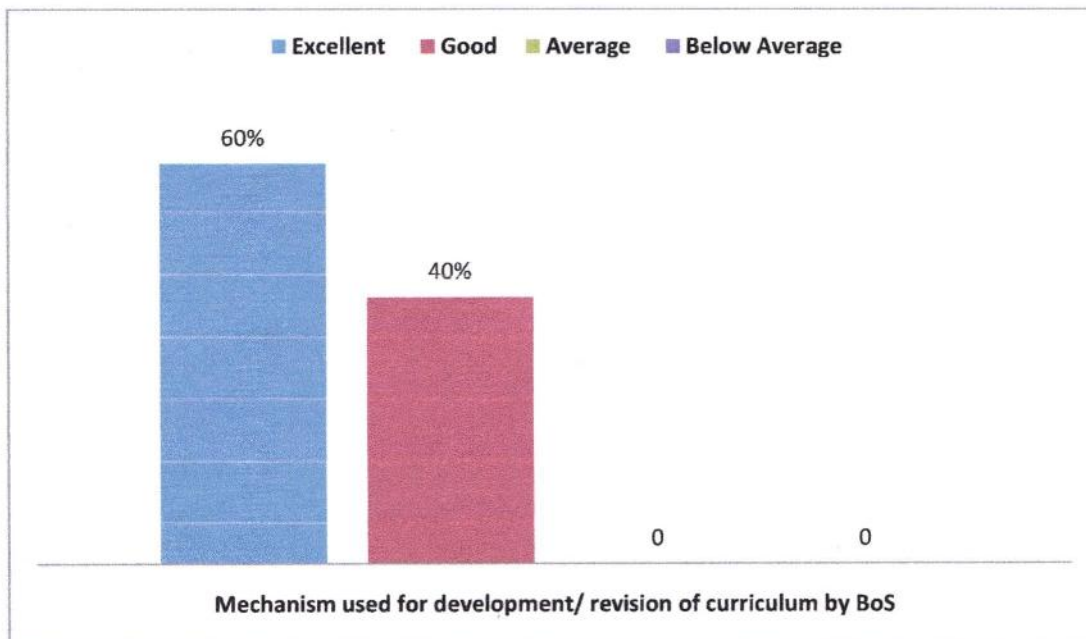
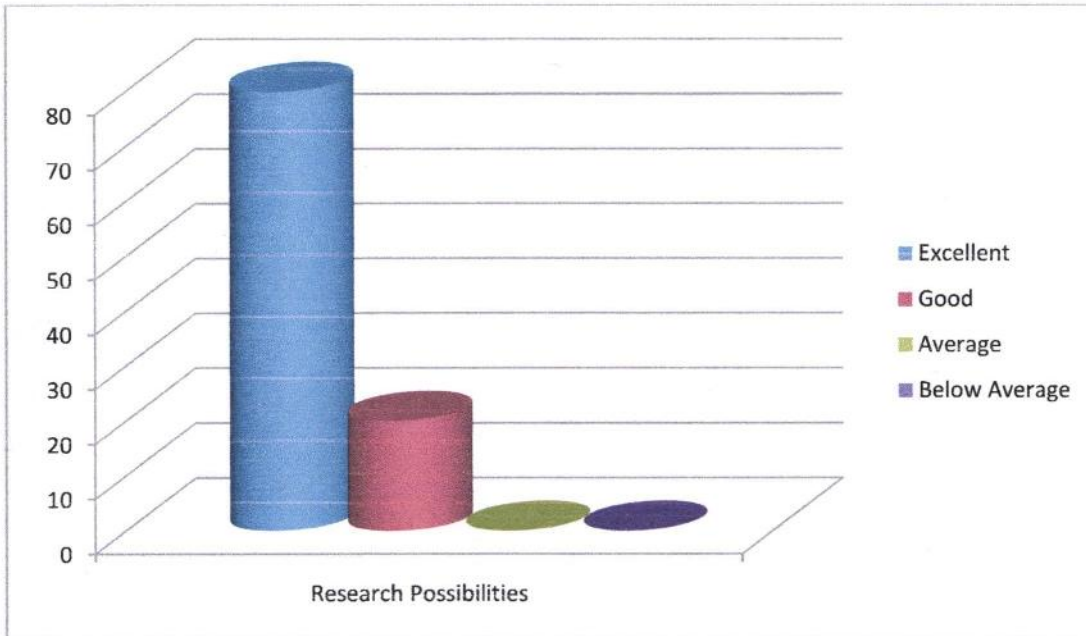
M.S.P.Mandal's
SUNDERRAO SOLANKE MAHAVIDYALAYA

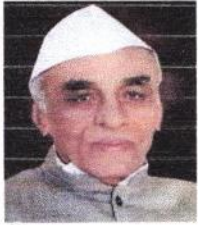
MAJALGAON, DIST.BEED (MH)-431131

NAAC Re-Accredited "A" Grade



Feedback Analysis





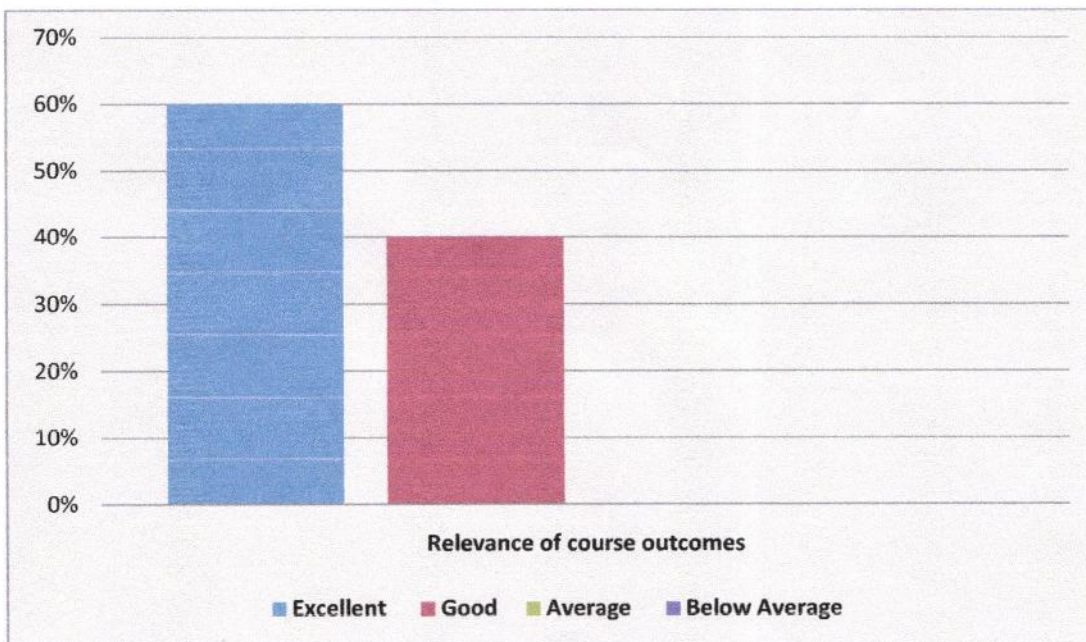
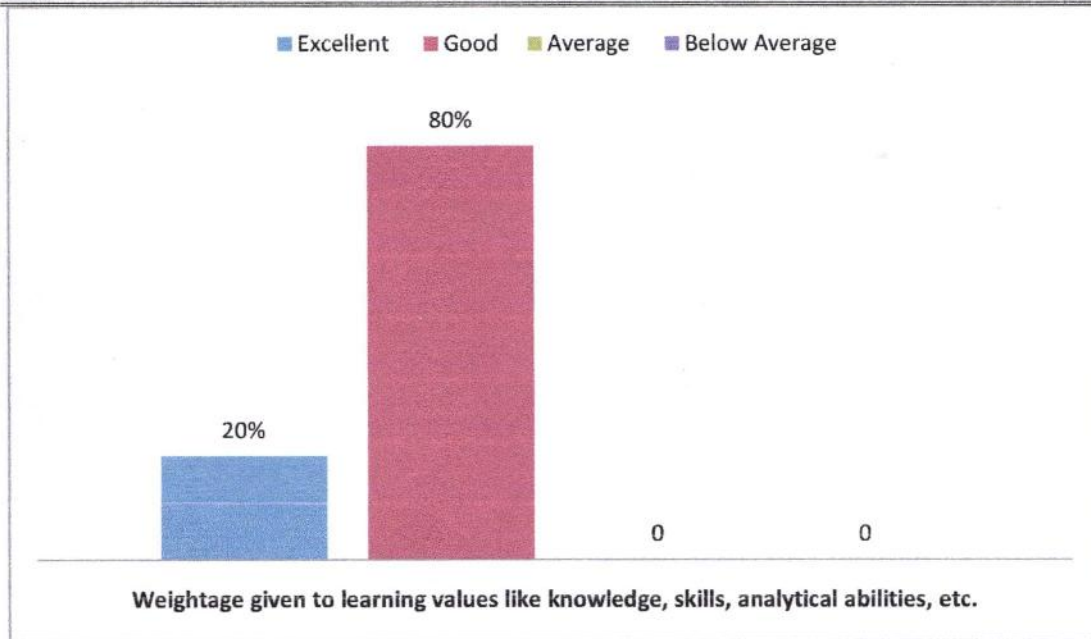
M.S.P.Mandal's
SUNDERRAO SOLANKE MAHAVIDYALAYA

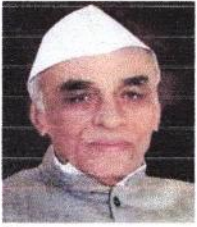
MAJALGAON, DIST.BEED (MH)-431131

NAAC Re-Accredited "A" Grade



Feedback Analysis





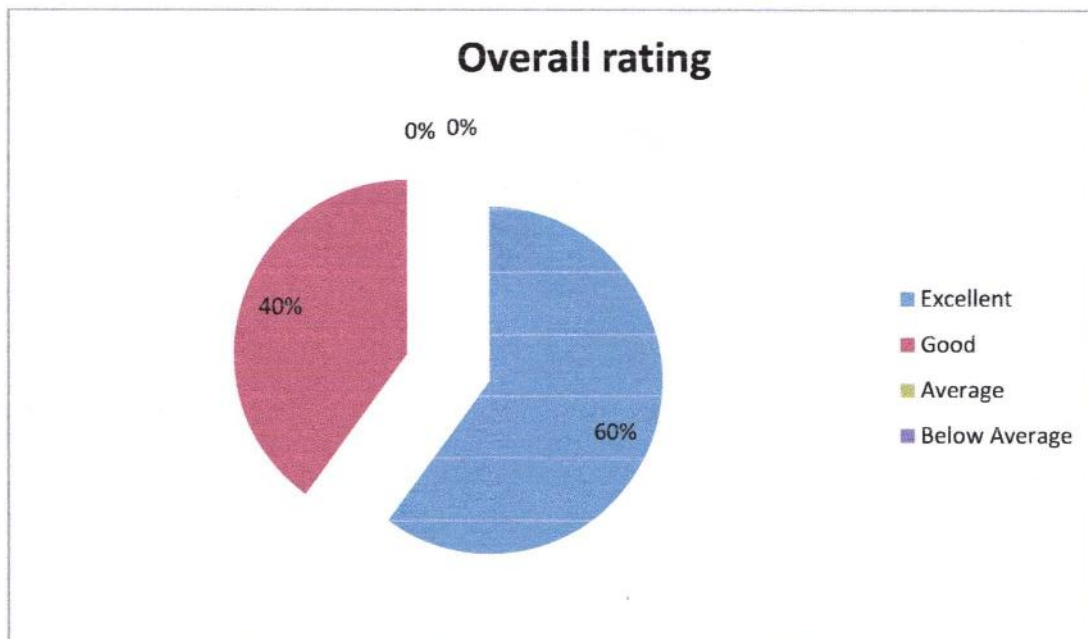
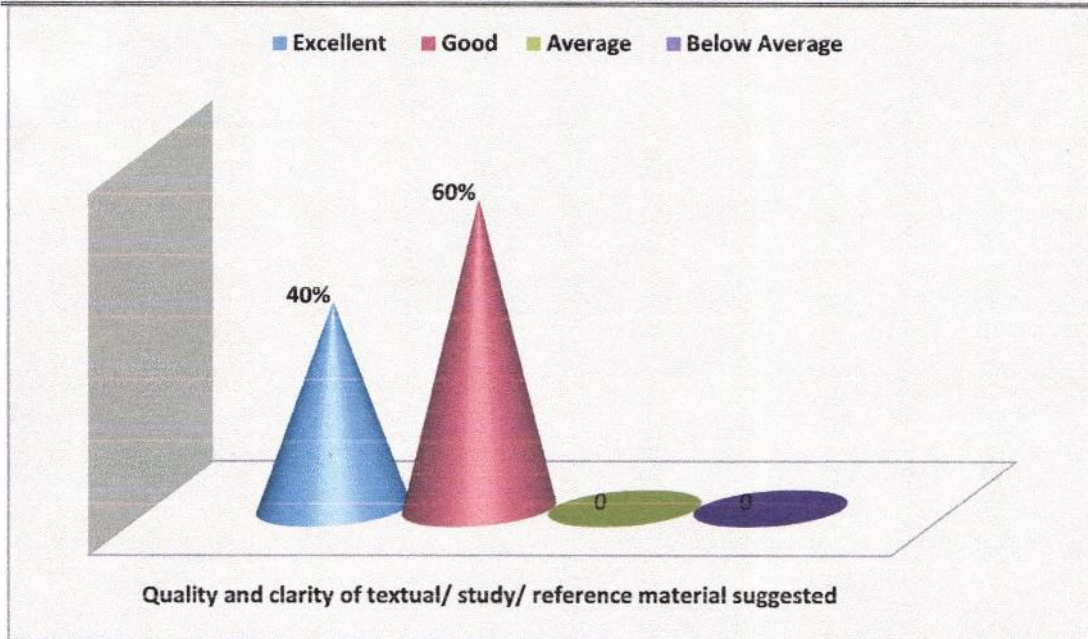
M.S.P.Mandal's
SUNDERRAO SOLANKE MAHAVIDYALAYA

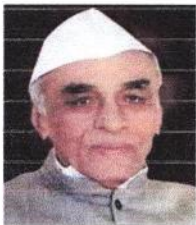
MAJALGAON, DIST.BEED (MH)-431131

NAAC Re-Accredited "A" Grade



Feedback Analysis





M.S.P.Mandal's
SUNDERRAO SOLANKE MAHAVIDYALAYA

MAJALGAON, DIST.BEED (MH)-431131

NAAC Re-Accredited "A" Grade



Feedback Analysis

Respondent details

Responses: 05

1. Applicability of the syllabus to local developmental needs

It is found that the maximum (03) of student's respondent opined that the applicability of the syllabus to local developmental needs found excellent, 01 think as good.

2. Difficulty level of the syllabus

The highest (02) respondents from the total respondents noted that the difficulty level of the syllabus is excellent; followed by 03 remarked as good.

3. Clarity about the course objectives

From the total 08 respondents, majority (05) of student respondents opined that Clarity about the course objectives are excellent, 3 opined it is good.

4. Weightage given to employability

From the total 05 respondents, majority (05) of respondents opined weightage given to employability is excellent.

5. Depth of the Course Content

It is found that the (03) number of respondents opined that depth of the course content is excellent, 02 thinks in this case as good.

6. Incorporation of latest knowledge & information

The collected information indicate that the maximum number of respondents (03) found the incorporation of latest knowledge & information is excellent, followed by 02 says it is good,

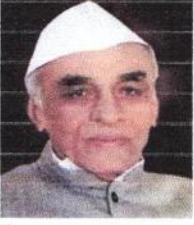
7. Research Possibilities

From the total 05 respondents, highest (04) of the respondents opined that research possibilities found excellent, 01 think as good.

8. Mechanism used for development/ revision of curriculum by BoS

It is found that the (03) number of respondents opined that mechanism used for development/ revision of curriculum by BoS excellent, 02 think in this case as good.

9. Weightage given to learning values like knowledge, skills, analytical abilities, etc.



M.S.P.Mandal's
SUNDERRAO SOLANKE MAHAVIDYALAYA

MAJALGAON, DIST.BEED (MH)-431131

NAAC Re-Accredited "A" Grade



Feedback Analysis

It is found that (01) of respondent opined that weightage given to learning values like knowledge, skills, analytical abilities, etc. are excellent, followed by 04 remarked as good.

10. Relevance of course outcomes

The highest (03) respondents noted that relevance of course outcomes is excellent; followed by 02 remarked as good.

11. Quality and clarity of textual/ study/ reference material suggested

It is found that (02) of respondent opined that quality and clarity of textual/ study/ reference material suggested is excellent, 03 opined it is good.

12. Overall rating

It is found that the maximum (03) of student's respondent opined that the overall rating of the College found is excellent, 02 think as good.

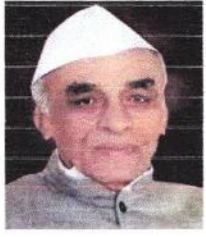
Coordinator

Internal Quality Assurance Cell (IQAC)
Sunderrao Solanke Mahavidyalaya,
Majalgaon, Dist.Beed (MS)



PRINCIPAL

Sunderrao Solanke Mahavidyalaya
Majalgaon Dist. Beed (M.S.)



M.S.P.Mandal's
SUNDERRAO SOLANKE MAHAVIDYALAYA

MAJALGAON, DIST.BEED (MH)-431131

NAAC Re-Accredited "A" Grade



Feedback Analysis

Marathwada Shikshan Prasarak Mandal's

**Sunderrao Solanke Mahavidyalaya, Majalgaon
Dist. Beed**

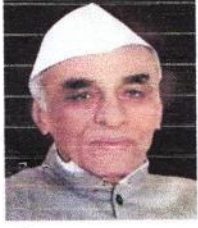


INTERNAL QUALITY ASSURANCE CELL



FEEDBACK ANALYSIS

2019-2020



M.S.P.Mandal's
SUNDERRAO SOLANKE MAHAVIDYALAYA

MAJALGAON, DIST.BEED (MH)-431131

NAAC Re-Accredited "A" Grade

Feedback Analysis

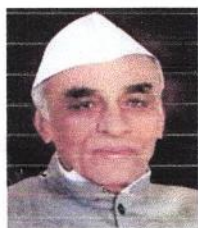
A REPORT ON FEEDBACK FROM ALUMNI ON CURRICULUM

ACADEMIC YEAR 2019 – 2020

Feedback on curriculum collected from the Alumni of college for academic year 2019-2020 on various important aspects which include:

- 1 Applicability of the curriculum to real life situations
- 2 Clarity about the course objectives
- 3 Difficulty level of the course content
- 4 Fulfillment of learning objectives
- 5 Fulfillment of my learning needs
- 6 Promotion of independent thinking by Curriculum
- 7 Usefulness of the curriculum in my higher education
- 8 Usefulness of the curriculum at workplace
- 9 Weightage given to employability
- 10 Weightage given to entrepreneurship
- 11 Weightage given to skill development
- 12 Overall rating

20 Alumni participated in the survey consisting of 12 aspects/questions on the Curriculum.



M.S.P.Mandal's
SUNDERRAO SOLANKE MAHAVIDYALAYA

MAJALGAON, DIST.BEED (MH)-431131

NAAC Re-Accredited "A" Grade



Feedback Analysis

M.S.P.Mandal's

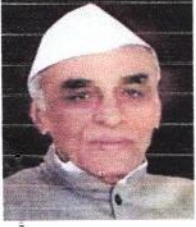
Sunderrao Solanke Mahavidyalaya Majalgaon

ALUMNI FEEDBACK ON CURRICULUM

ACADEMIC YEAR -2019-20

ANALYSIS OF FEEDBACK

Sr. NO.	PARAMETERS	Excellent %	Good %	Average %	Below Average %
1	Applicability of the curriculum to real life	40	60	0	0
2	Clarity about the course objectives	20	60	20	0
3	Difficulty level of the course content	60	40	0	0
4	Fulfillment of learning objectives	50	50	0	0
5	Fulfillment of my learning needs	95	5	0	0
6	Promotion of independent thinking by Curriculum	40	60	0	0
7	Usefulness of the curriculum in my higher education	30	70	0	0
8	Usefulness of the curriculum at workplace	60	40	0	0
9	Weightage given to employability	55	35	10	0
10	Weightage given to entrepreneurship	35	60	5	0
11	Weightage given to skill development	65	35	0	0
12	Overall rating	40	60	0	0

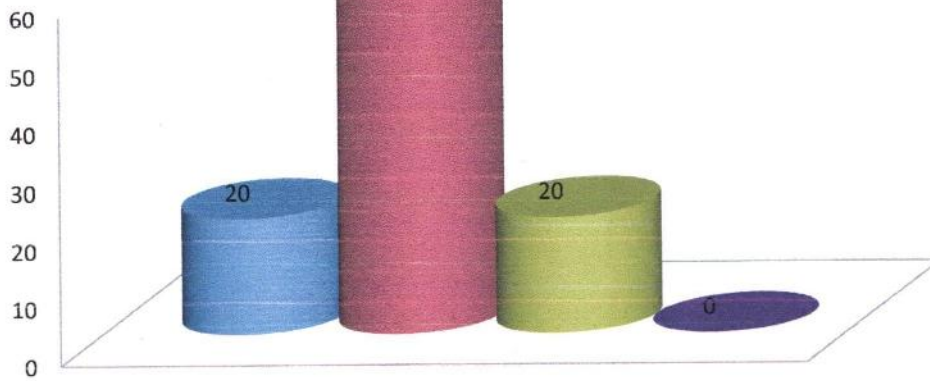
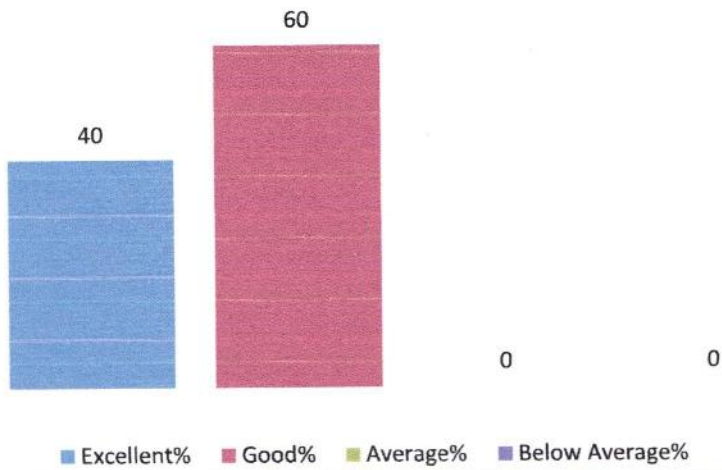


M.S.P.Mandal's
SUNDERRAO SOLANKE MAHAVIDYALAYA
MAJALGAON, DIST.BEED (MH)-431131
NAAC Re-Accredited "A" Grade



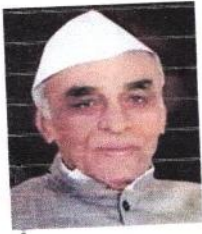
Feedback Analysis

Applicability of the curriculum to real life situations



Clarity about the course objectives

■ Excellent% ■ Good% ■ Average% ■ Below Average%



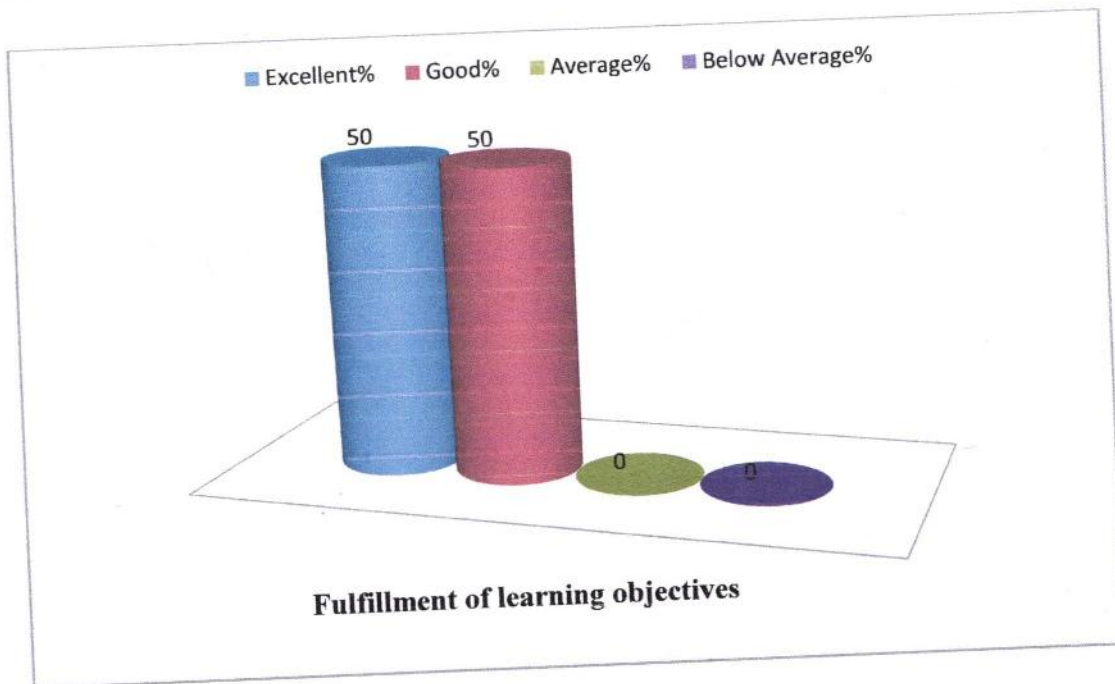
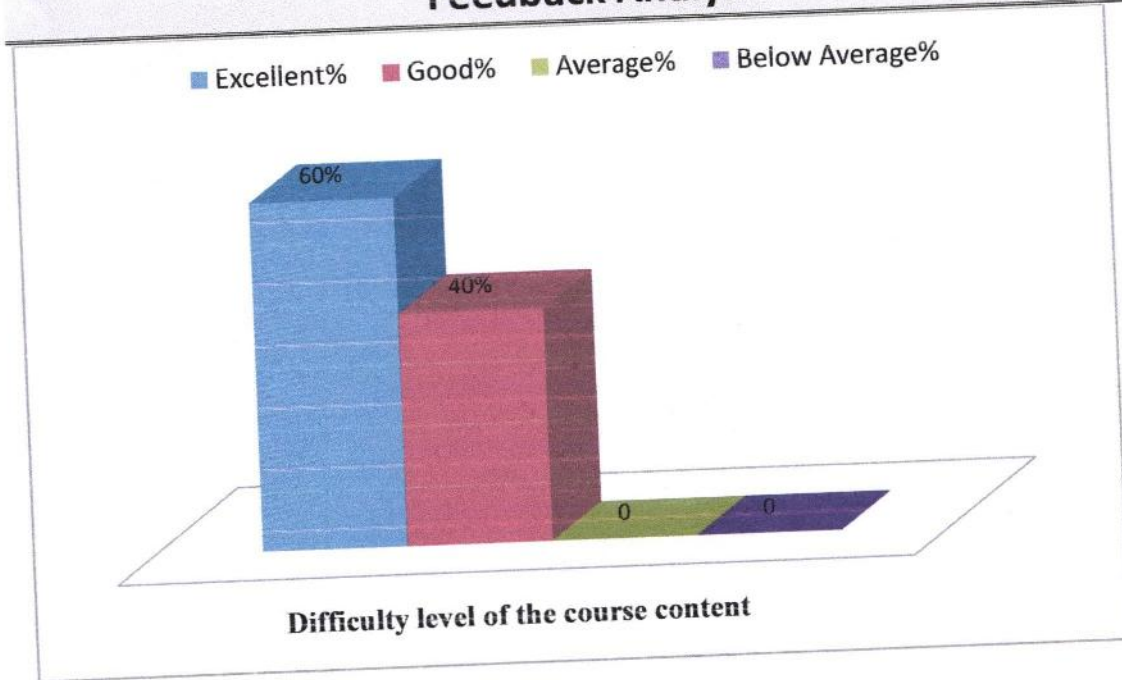
M.S.P.Mandal's
SUNDERRAO SOLANKE MAHAVIDYALAYA

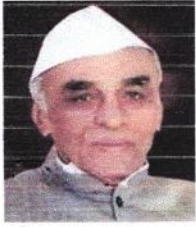
MAJALGAON, DIST.BEED (MH)-431131

NAAC Re-Accredited "A" Grade



Feedback Analysis





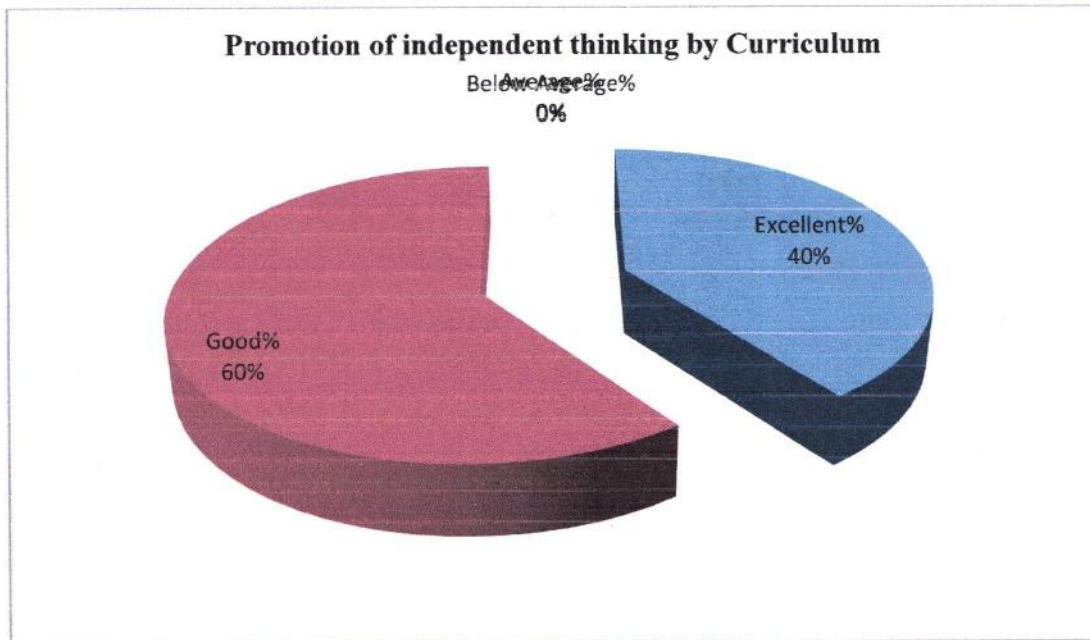
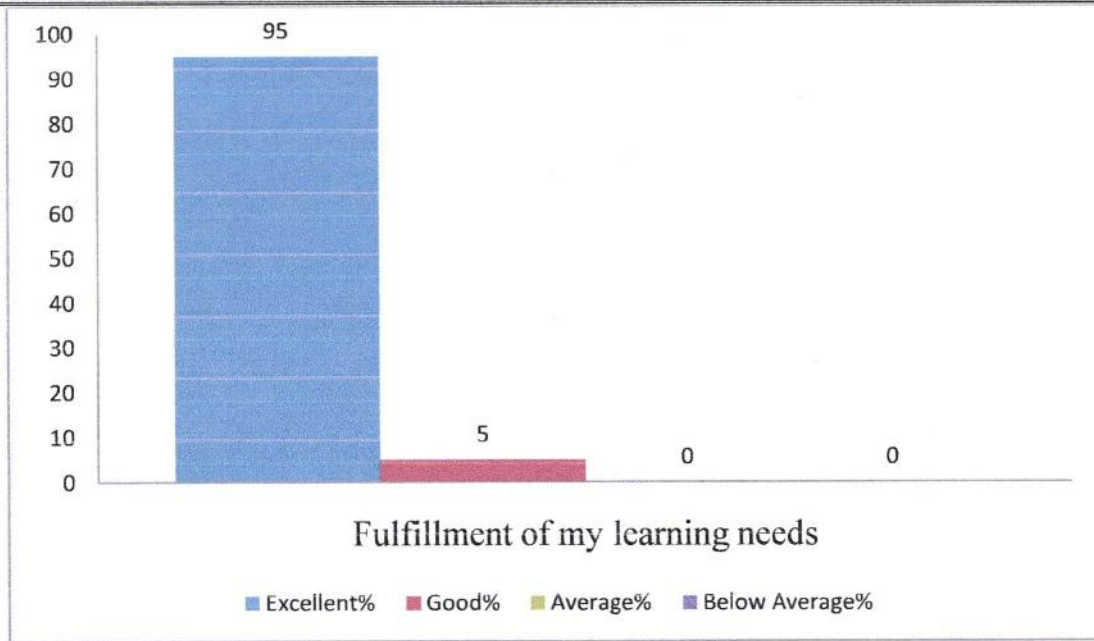
M.S.P.Mandal's
SUNDERRAO SOLANKE MAHAVIDYALAYA

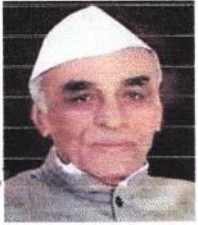
MAJALGAON, DIST.BEED (MH)-431131

NAAC Re-Accredited "A" Grade



Feedback Analysis





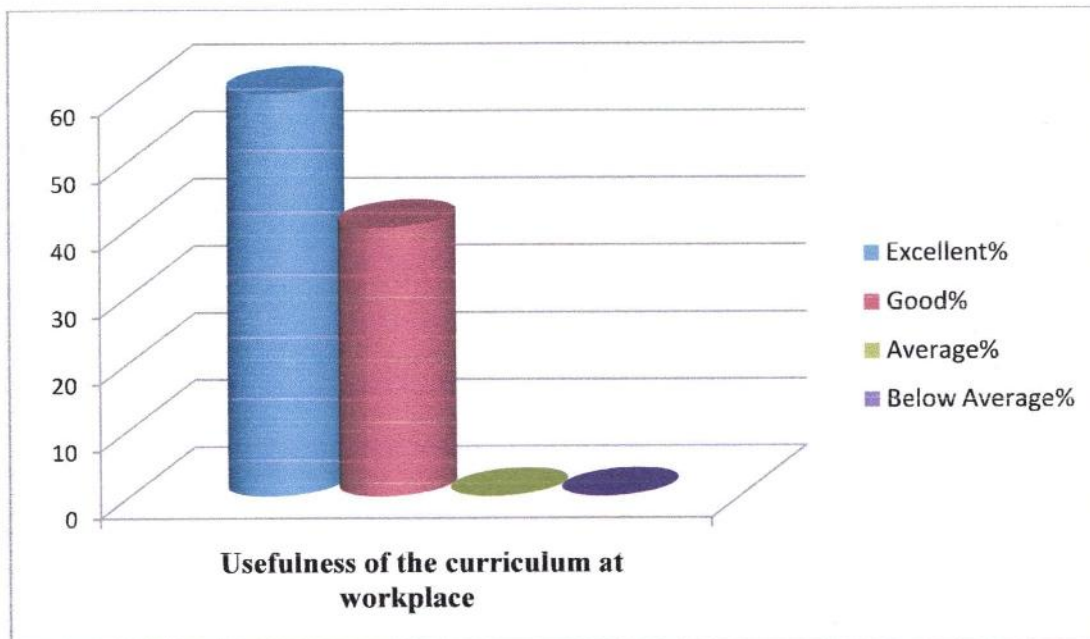
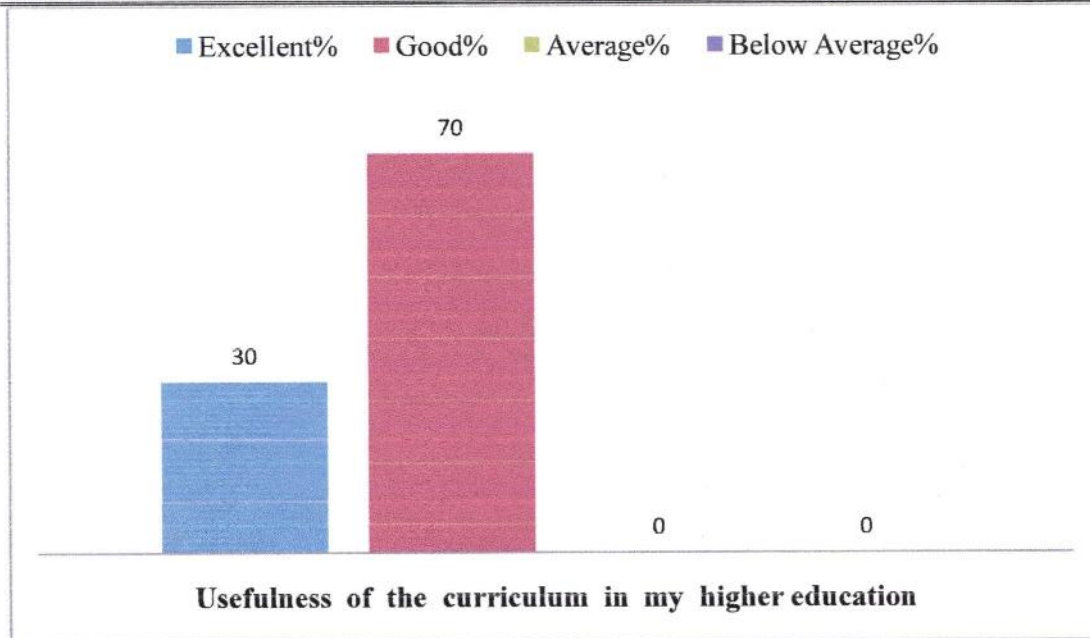
M.S.P.Mandal's
SUNDERRAO SOLANKE MAHAVIDYALAYA

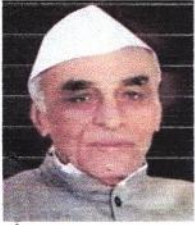
MAJALGAON, DIST.BEED (MH)-431131

NAAC Re-Accredited "A" Grade



Feedback Analysis





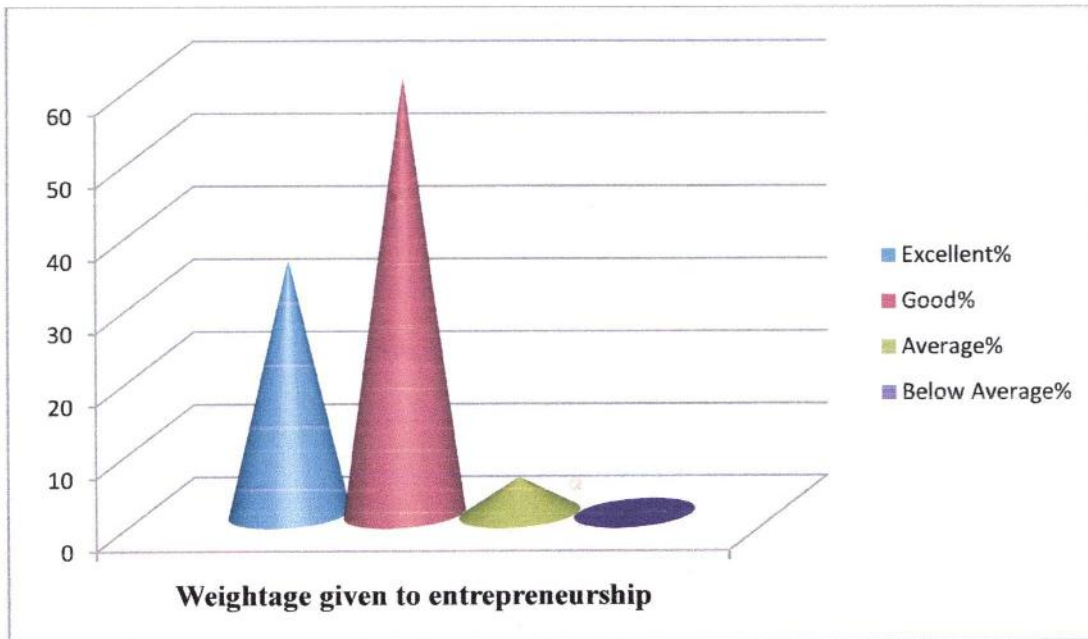
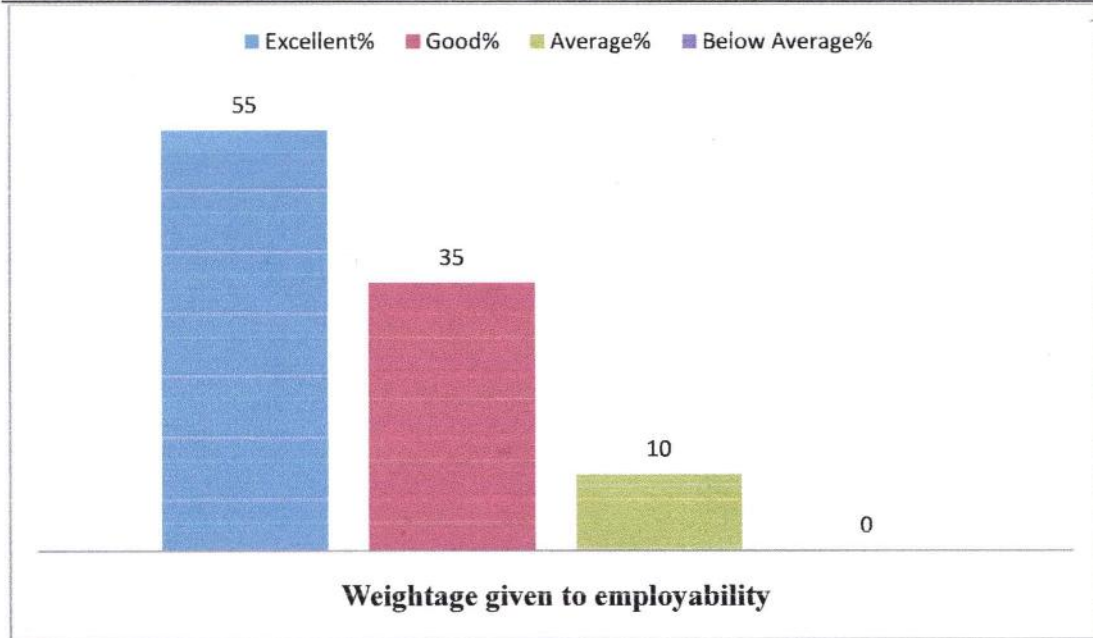
M.S.P.Mandal's
SUNDERRAO SOLANKE MAHAVIDYALAYA

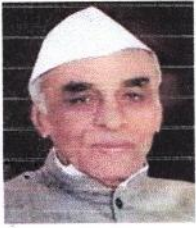
MAJALGAON, DIST.BEED (MH)-431131

NAAC Re-Accredited "A" Grade



Feedback Analysis





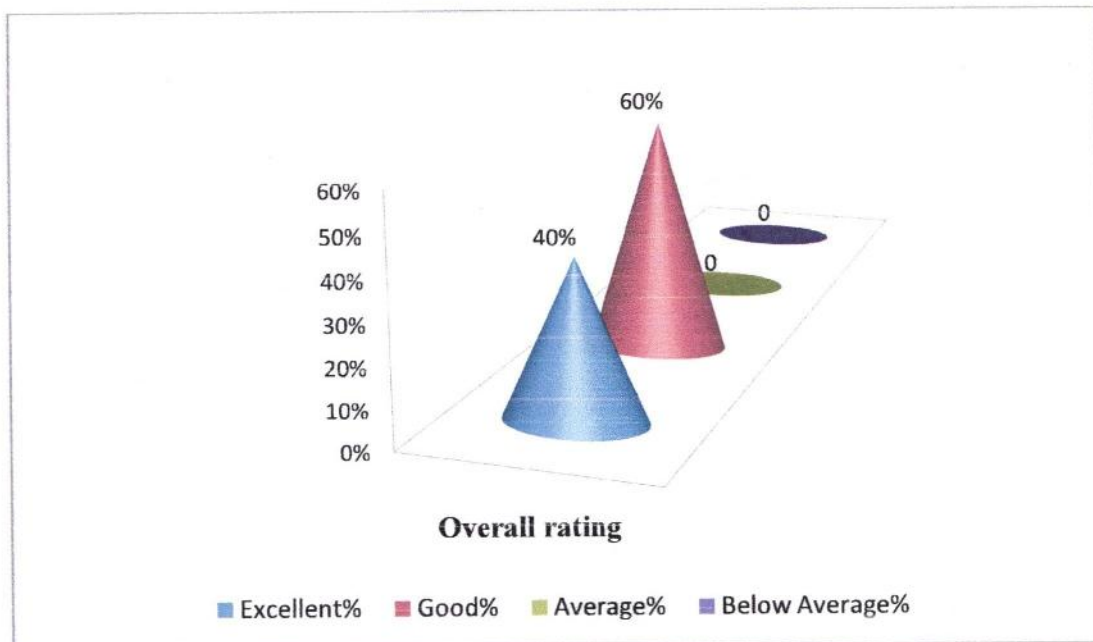
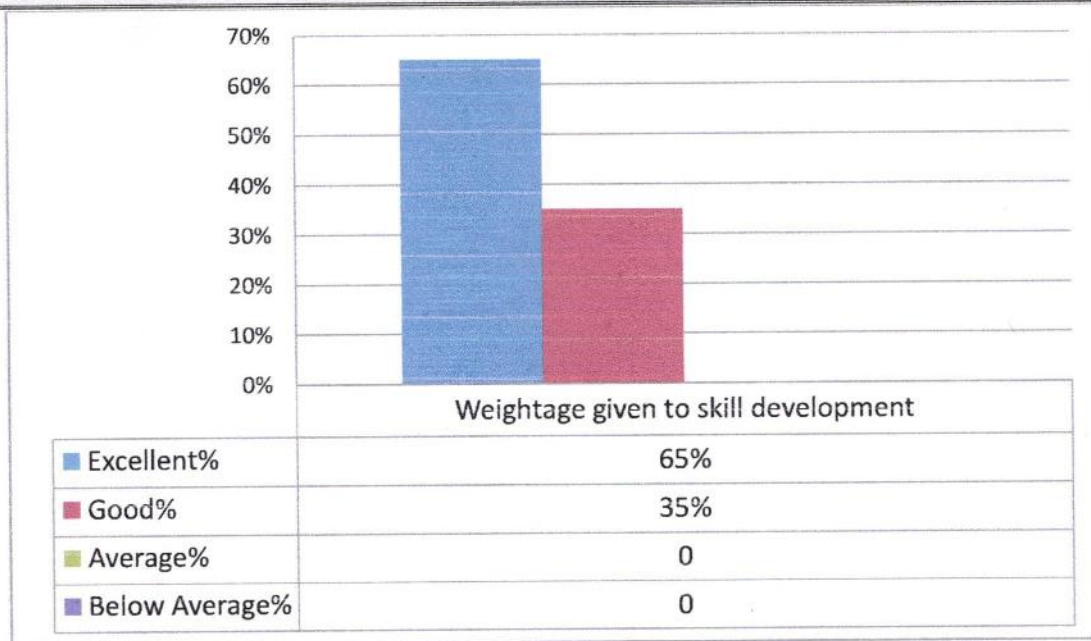
M.S.P.Mandal's
SUNDERRAO SOLANKE MAHAVIDYALAYA

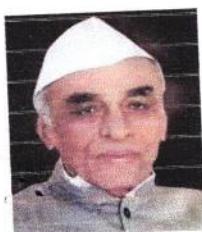
MAJALGAON, DIST.BEED (MH)-431131

NAAC Re-Accredited "A" Grade



Feedback Analysis





M.S.P.Mandal's
SUNDERRAO SOLANKE MAHAVIDYALAYA

MAJALGAON, DIST.BEED (MH)-431131

NAAC Re-Accredited "A" Grade



Feedback Analysis

Respondent details

Responses: 20

1. Applicability of the curriculum to real life situations

It is found that the maximum (19) of student's respondent opined applicability of the curriculum to real life situations found excellent, 01 think as good.

2. Clarity about the course objectives

The highest (08) respondents from the total students noted clarity about the course objectives excellent; followed by 12 remarked as good.

3. Difficulty level of the course content

From the total 20 respondents, (04) respondents opined that difficulty level of the course content is excellent, 12 opined it is good, followed by 04 remarked as average.

4. Fulfillment of learning objectives

From the total 20 respondents, 11 respondents opined fulfillment of learning objectives is excellent, 07 opined it is good, followed by 02 remarked as average.

5. Fulfillment of my learning needs

It is found that the 13 number of respondents opined that fulfillment of my learning needs is excellent, 07 thinks in this case as good.

6. Promotion of independent thinking by Curriculum

The collected information indicate that the maximum number of respondents (07) found promotion of independent thinking by curriculum is excellent, followed by 12 says it is good, 1 opined as it is average.

7. Usefulness of the curriculum in my higher education

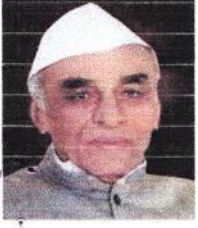
From the total 30 respondents, highest (16) of the respondents opined usefulness of the curriculum in my higher education found excellent. 12 think as good, 2 opined as it is average.

8. Usefulness of the curriculum at workplace

It is found that the highest (08) number of respondents opined that usefulness of the curriculum at workplace is excellent, 12 thinks in this case as good.

9. Weightage given to employability

It is found that the maximum (12) of respondent opined that Weightage given to employability found excellent, 08 think as good.



M.S.P.Mandal's
SUNDERRAO SOLANKE MAHAVIDYALAYA
MAJALGAON, DIST.BEED (MH)-431131
NAAC Re-Accredited "A" Grade



Feedback Analysis

10. Weightage given to entrepreneurship

The highest (06) respondents from the total students noted that the Weightage given to entrepreneurship is excellent; followed by 14 remarked as good.

11. Weightage given to skill development

From the total 20 respondents, majority (10) of student respondents opined that weightage given to skill development are excellent, 10 opined it is good.

12. Overall rating

It is found that (08) of the respondent opined that the overall rating found excellent, 12 think as good.

Coordinator

Internal Quality Assurance Cell (IQAC)
Sunderrao Solanke Mahavidyalaya,
Majalgaon, Dist.Beed (MS)



PRINCIPAL

Sunderrao Solanke Mahavidyalaya
Majalgaon Dist. Beed (M.S.)



M.S.P.Mandal's

Sunderrao Solanke Mahavidyalaya Majalgaon

STUDENT FEEDBACK ON CURRICULUM

ACADEMIC YEAR -2019-20

Name of Student: Fande pradep Ramesh

Class: B.A-T.Y

Department: History

Sr. NO	PARAMETERS	Excellent	Good	Average	Below Average
1	Fulfillment of my learning needs	✓			
2	Applicability of the curriculum to real life situations	✓			
3	Clarity about the course objectives	✓			
4	Weightage given to employability		✓		
5	Weightage given to skill development		✓		
6	Structure of the syllabus	✓			
7	Difficulty level of the course content	✓			
8	Promotion of independent thinking by curriculum		✓		
9	Exposure to new knowledge and practices	✓			
10	Weightage to practical /field work	✓			
11	Creation of interest to pursue higher education	✓			
12	Overall Rating	✓			


Coordinator

Internal Quality Assurance Cell (IQAC)
Sunderrao Solanke Mahavidyalaya,
Majalgaon, Dist. Beed (MS)




Signature

PRINCIPAL

Sunderrao Solanke Mahavidyalaya
Majalgaon Dist. Beed (M.S.)



M.S.P.Mandal's

Sunderrao Solanke Mahavidyalaya Majalgaon

TEACHER FEEDBACK ON CURRICULUM

ACADEMIC YEAR -2019-20

Name of the Teacher: *Dr. A.S. Pentawat*

Department: *Pol-sci*

Sr. NO.	PARAMETERS	Excellent	Good	Average	Below Average
1	Applicability of the syllabus to local developmental needs		✓		
2	Difficulty level of the syllabus		✓		
3	Clarity about the course objectives	✓			
4	Weightage given to employability	✓			
5	Depth of the Course Content	✓			
6	Incorporation of latest knowledge & information		✓		
7	Research Possibilities	✓			
8	Mechanism used for development/ revision of curriculum by BoS		✓		
9	Weightage given to learning values like knowledge, skills, analytical abilities, etc.	✓			
10	Relevance of course outcomes	✓			
11	Quality and clarity of textual/ study/ reference material suggested	✓			
12	Overall rating	✓			

Coordinator

Internal Quality Assurance Cell (IQAC)
Sunderrao Solanke Mahavidyalaya,
Majalgaon, Dist. Beed (MS)



Signature

PRINCIPAL

Sunderrao Solanke Mahavidyalaya
Majalgaon Dist. Beed (M.S.)



M.S.P.Mandal's

Sunderrao Solanke Mahavidyalaya Majalgaon

SUBJECT EXPERT FEEDBACK ON CURRICULUM

ACADEMIC YEAR -2019-20

Name of the Subject Expert: *Dr. Ganesh Kathore*

Department: *Commerce*

Sr. NO.	PARAMETERS	Excellent	Good	Average	Below Average
1	Applicability of the syllabus to local developmental needs	✓			
2	Difficulty level of the syllabus		✓		
3	Clarity about the course objectives	✓			
4	Weightage given to employability	✓			
5	Depth of the Course Content	✓			
6	Incorporation of latest knowledge & information	✓			
7	Research Possibilities		✓		
8	Mechanism used for development/ revision of curriculum by BoS		✓		
9	Weightage given to learning values like knowledge, skills, analytical abilities, etc.	✓			
10	Relevance of course outcomes	✓			
11	Quality and clarity of textual/ study/ reference material suggested		✓		
12	Overall rating	✓			

[Signature]
Signature

[Signature]
Coordinator

Internal Quality Assurance Cell (IQAC)
Sunderrao Solanke Mahavidyalaya,
Majalgaon, Dist. Beed (MS)



[Signature]
PRINCIPAL

Sunderrao Solanke Mahavidyalaya
Majalgaon Dist. Beed (M.S.)



M.S.P.Mandal's

Sunderrao Solanke Mahavidyalaya Majalgaon

ALUMNI FEEDBACK ON CURRICULUM

ACADEMIC YEAR -2019-20

Name of the Alumni: *Chandanshiv Sujata Subhasrao.*

Sr. NO.	PARAMETERS	Excellent	Good	Average	Below Average
1	Fulfillment of my learning needs	✓			
2	Applicability of the curriculum to real life situations		✓		
3	Clarity about the course objectives	✓			
4	Weightage given to employability			✓	
5	Weightage given to skill development	✓			
6	Weightage given to entrepreneurship		✓		
7	Difficulty level of the course content	✓			
8	Promotion of independent thinking by Curriculum		✓		
9	Usefulness of the curriculum at workplace	✓			
10	Usefulness of the curriculum in my higher education		✓		
11	Fulfillment of learning objectives	✓			
12	Overall rating		✓		

Sujata.
Signature

[Signature]
Coordinator

Internal Quality Assurance Cell (IQAC)
Sunderrao Solanke Mahavidyalaya,
Majalgaon, Dist. Beed (MS)



[Signature]
PRINCIPAL
Sunderrao Solanke Mahavidyalaya
Majalgaon Dist. Beed (M.S.)