



Marathwada Shikshan Prasarak Mandal's

Sunderrao Solanke Mahavidyalaya, Majalgaon



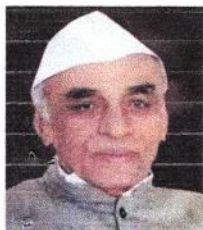
INTERNAL QUALITY ASSURANCE CELL

Criterion 1- Curricular Aspects

1.4 Feedback System

1.4.1 Institution obtains feedback on the academic performance and ambience of the institution from various stakeholders, such as Students, Teachers, Employers, Alumni etc. and action taken report on the feedback is made available on institutional website (Yes or No).

Feedback 2018-2019



M.S.P.Mandal's

SUNDERRAO SOLANKE MAHAVIDYALAYA

MAJALGAON, DIST.BEED (MH)-431131

NAAC Re-Accredited "A" Grade



Feedback Analysis

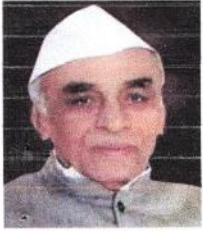
A REPORT ON FEEDBACK FROM STUDENTS ON CURRICULUM

ACADEMIC YEAR 2018 – 2019

Feedback on Curriculum collected from the Students on college for academic year 2018-2019 on various important aspects which include:

- 1 Fulfillment of my learning needs
- 2 Applicability of the curriculum to real life situations
- 3 Clarity about the course objectives
- 4 Weightage given to employability
- 5 Weightage given to skill development
- 6 Structure of the syllabus
- 7 Difficulty level of the course content
- 8 Promotion of independent thinking by curriculum
- 9 Exposure to new knowledge and practices
- 10 Weightage to practical /field work
- 11 Creation of interest to pursue higher education
- 12 Overall Rating

23 Students participated in the survey consisting of 12 aspects/questions on the Curriculum.



M.S.P.Mandal's
SUNDERRAO SOLANKE MAHAVIDYALAYA

MAJALGAON, DIST.BEED (MH)-431131

NAAC Re-Accredited "A" Grade



Feedback Analysis

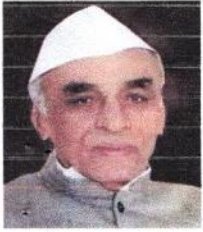
M.S.P.Mandal's

Sunderrao Solanke Mahavidyalaya Majalgaon

STUDENT FEEDBACK ON CURRICULUM

ACADEMIC YEAR -2018-19

Sr. NO	PARAMETERS	Excellent%	Good %	Average%	Below Average %
1	Fulfillment of my learning needs	95.65	4.35	0.00	0
2	Applicability of the curriculum to real life situations	52.17	4.35	4.35	0
3	Clarity about the course objectives	82.61	17.39	0.00	0
4	Weightage given to employability	52.17	47.83	0.00	0
5	Weightage given to skill development	43.48	56.52	0.00	0
6	Structure of the syllabus	73.91	26.09	0.00	0
7	Difficulty level of the course content	65.22	34.78	0.00	0
8	Promotion of independent thinking by curriculum	52.17	47.83	0.00	0
9	Exposure to new knowledge and practices	73.91	26.09	0.00	0
10	Weightage to practical /field work	65.22	34.78	0.00	0
11	Creation of interest to pursue higher education	69.57	30.43	0.00	0
12	Overall Rating	56.52	39.13	0.00	0



M.S.P.Mandal's
SUNDERRAO SOLANKE MAHAVIDYALAYA

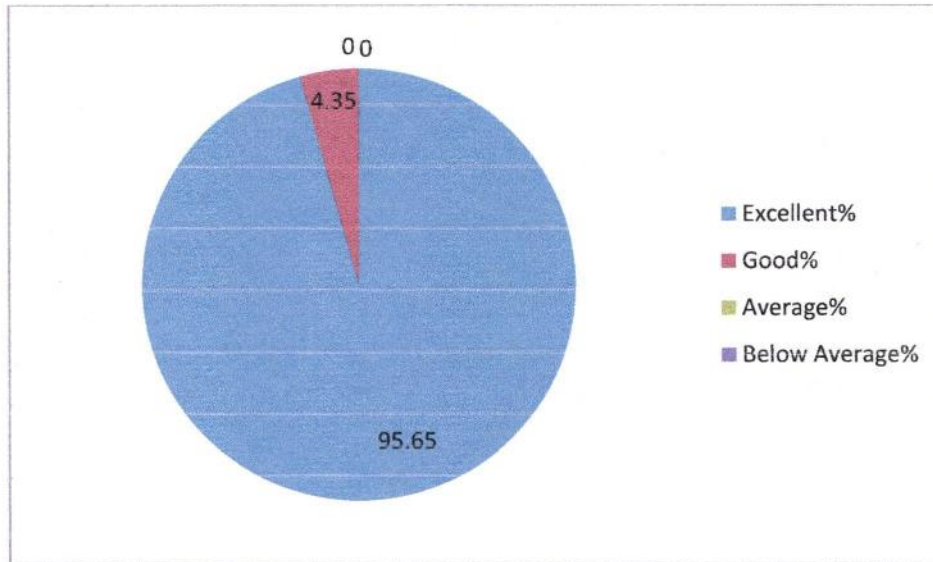
MAJALGAON, DIST.BEED (MH)-431131

NAAC Re-Accredited "A" Grade

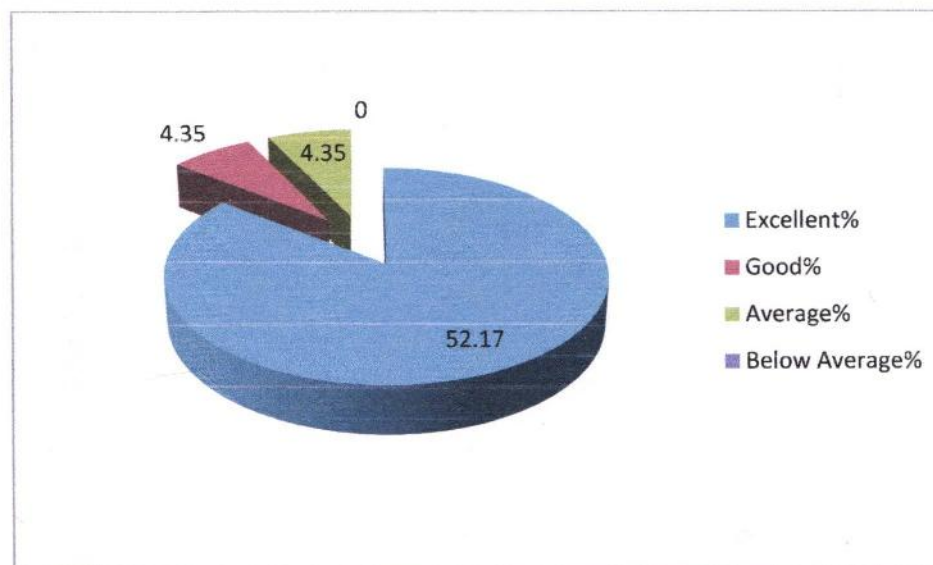


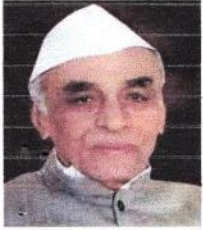
Feedback Analysis

1. Fulfillment of my learning needs



2. Applicability of the curriculum to real life situations





M.S.P.Mandal's
SUNDERRAO SOLANKE MAHAVIDYALAYA

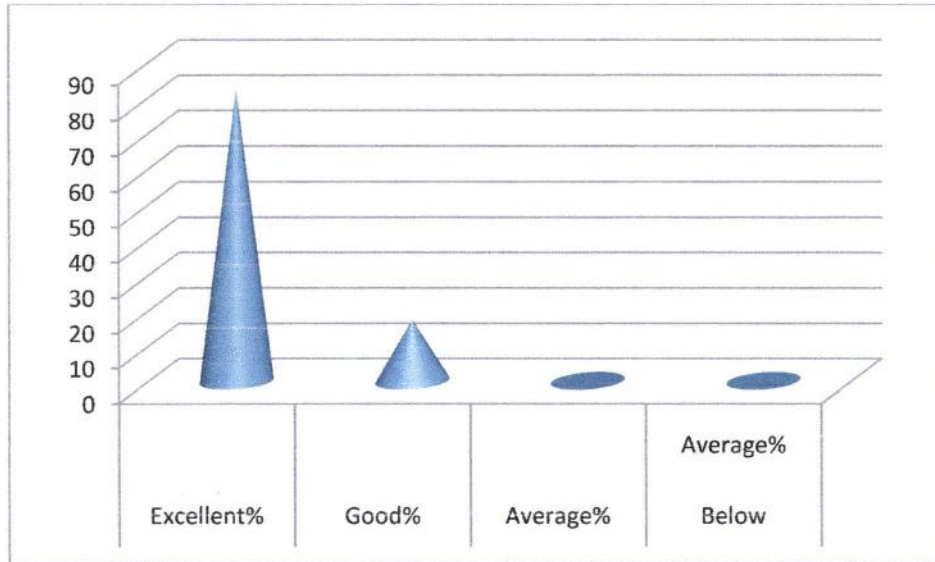
MAJALGAON, DIST.BEED (MH)-431131

NAAC Re-Accredited "A" Grade

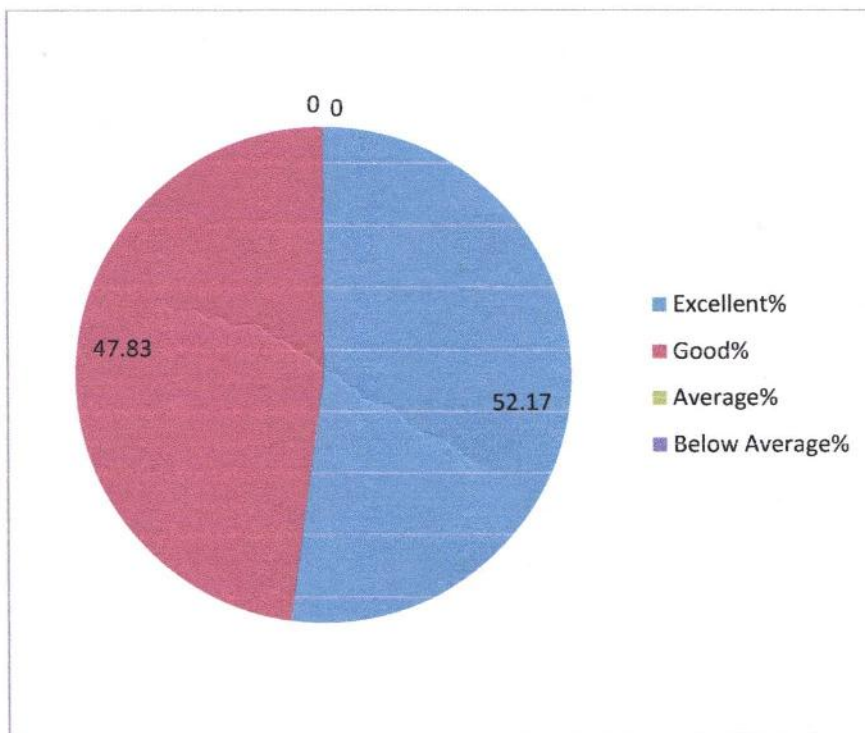


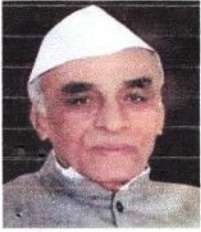
Feedback Analysis

3. Clarity about the course objectives



4. Weightage given to employability





M.S.P.Mandal's
SUNDERRAO SOLANKE MAHAVIDYALAYA

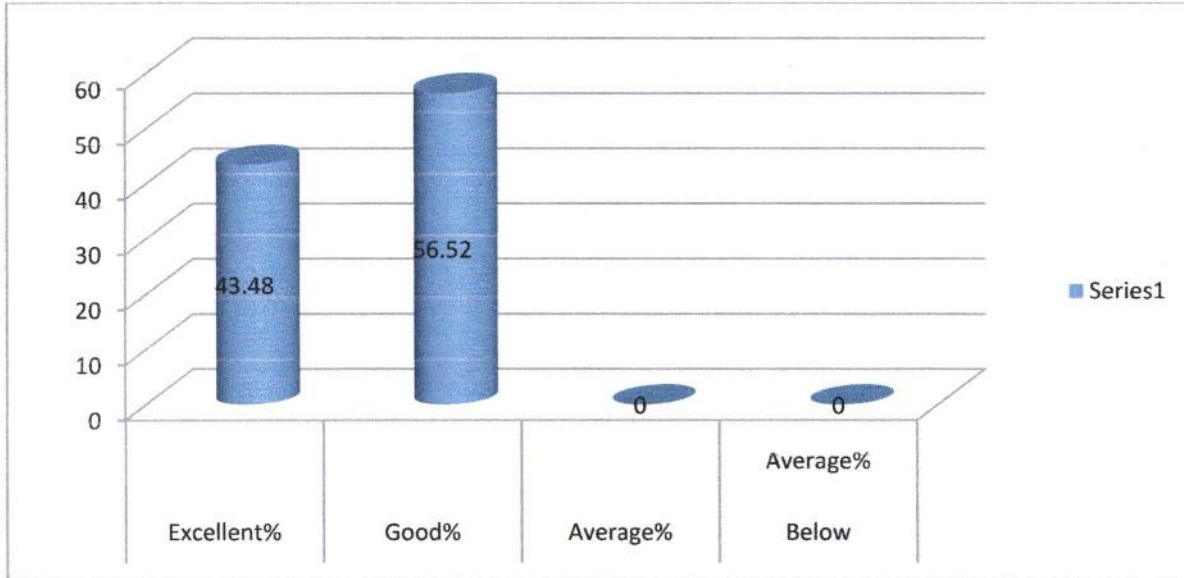
MAJALGAON, DIST.BEED (MH)-431131

NAAC Re-Accredited "A" Grade

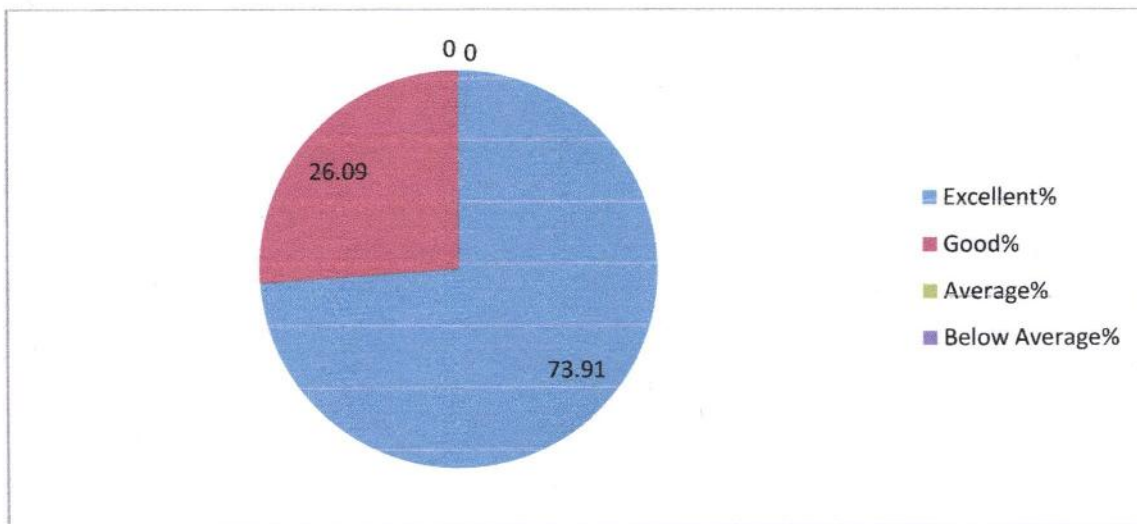


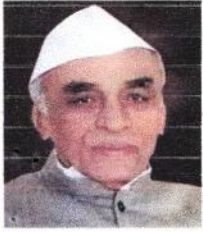
Feedback Analysis

5. Weightage given to skill development



6. Structure of the syllabus





M.S.P.Mandal's
SUNDERRAO SOLANKE MAHAVIDYALAYA

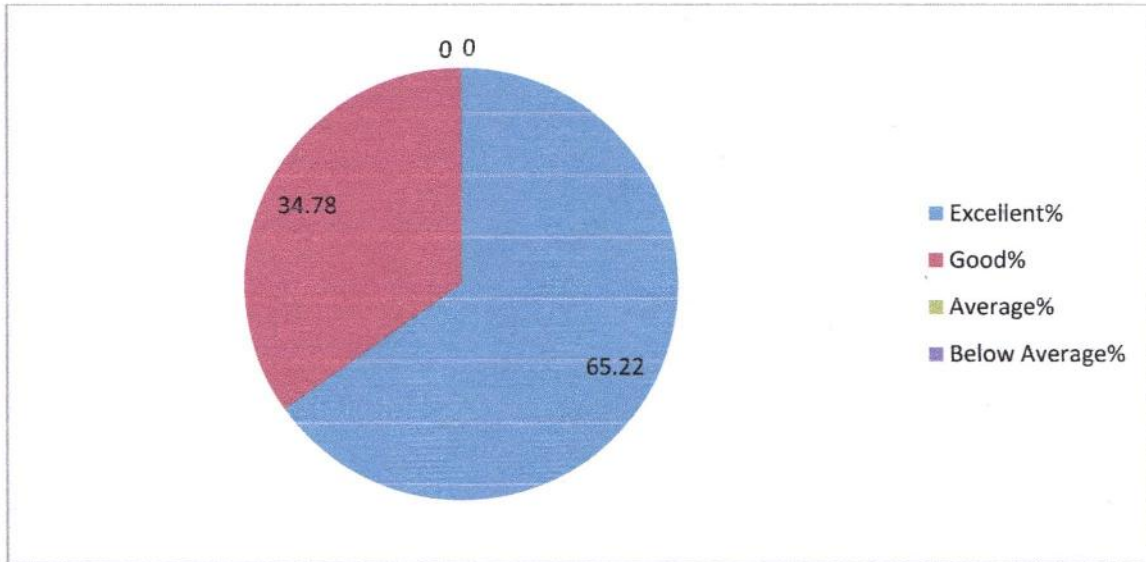
MAJALGAON, DIST.BEED (MH)-431131

NAAC Re-Accredited "A" Grade

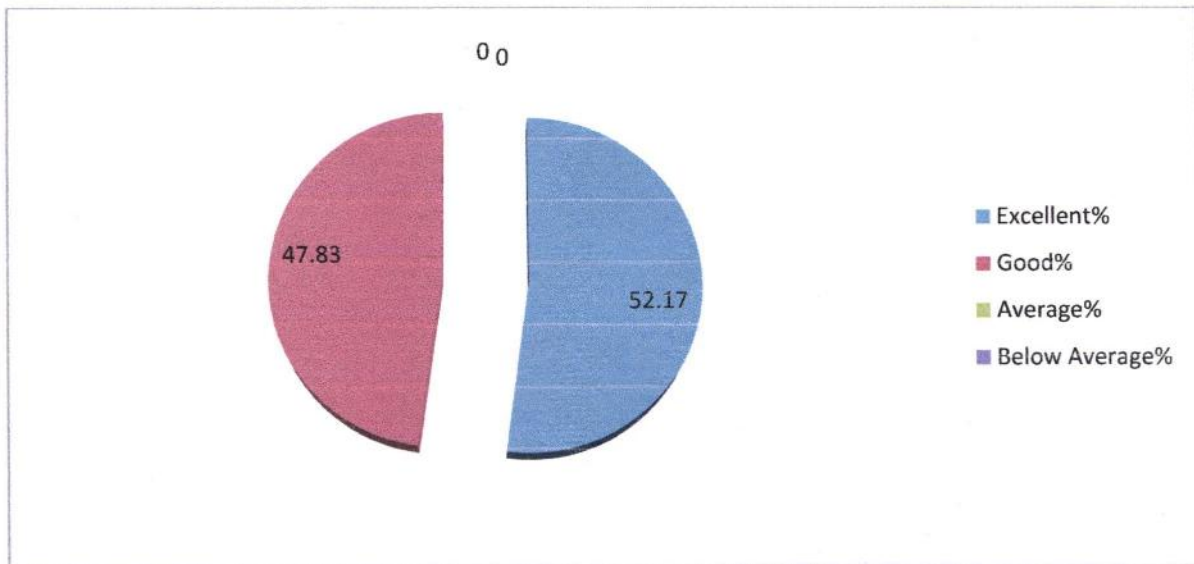


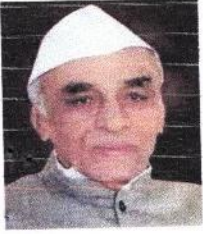
Feedback Analysis

7. Difficulty level of the course content



8. Promotion of independent thinking by curriculum





M.S.P.Mandal's
SUNDERRAO SOLANKE MAHAVIDYALAYA

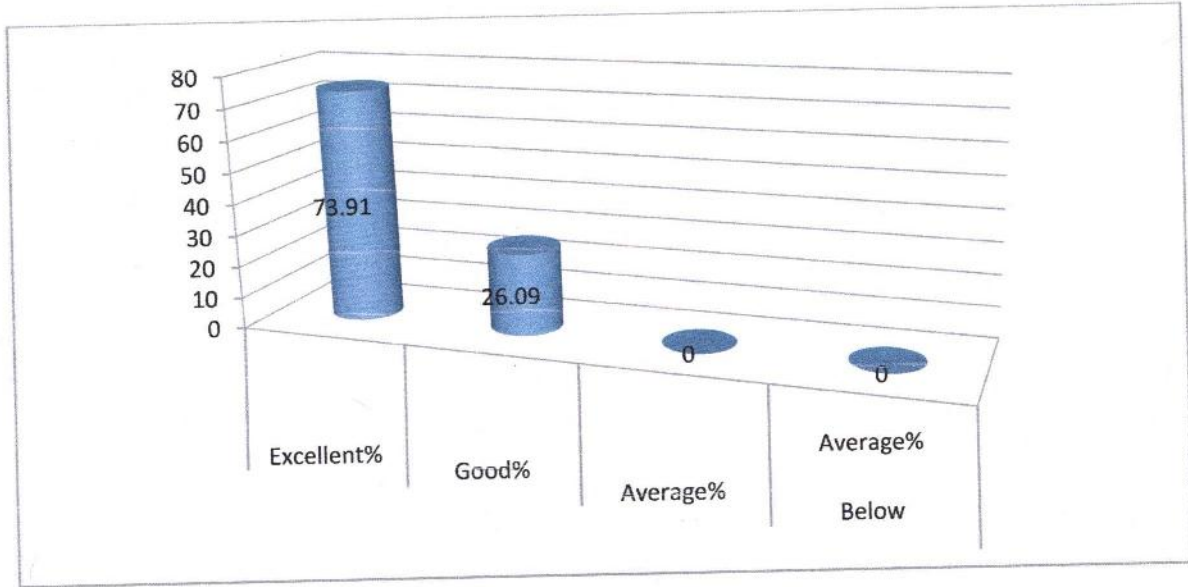
MAJALGAON, DIST.BEED (MH)-431131

NAAC Re-Accredited "A" Grade

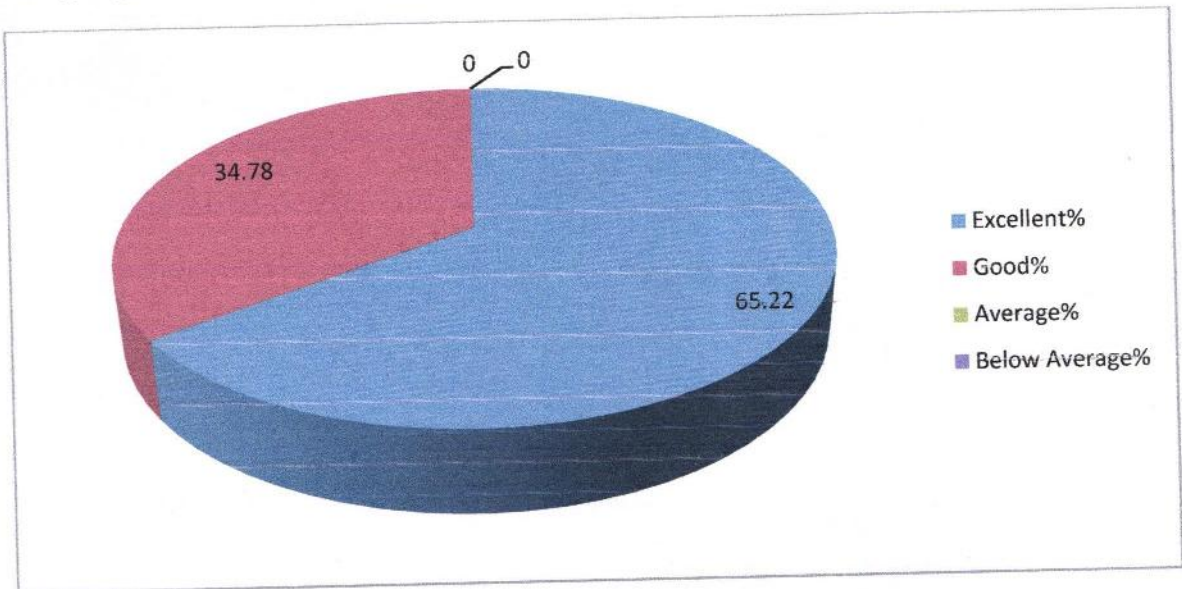


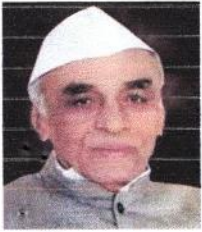
Feedback Analysis

9. Exposure to new knowledge and practices



10. Weightage to practical /field work





M.S.P.Mandal's
SUNDERRAO SOLANKE MAHAVIDYALAYA

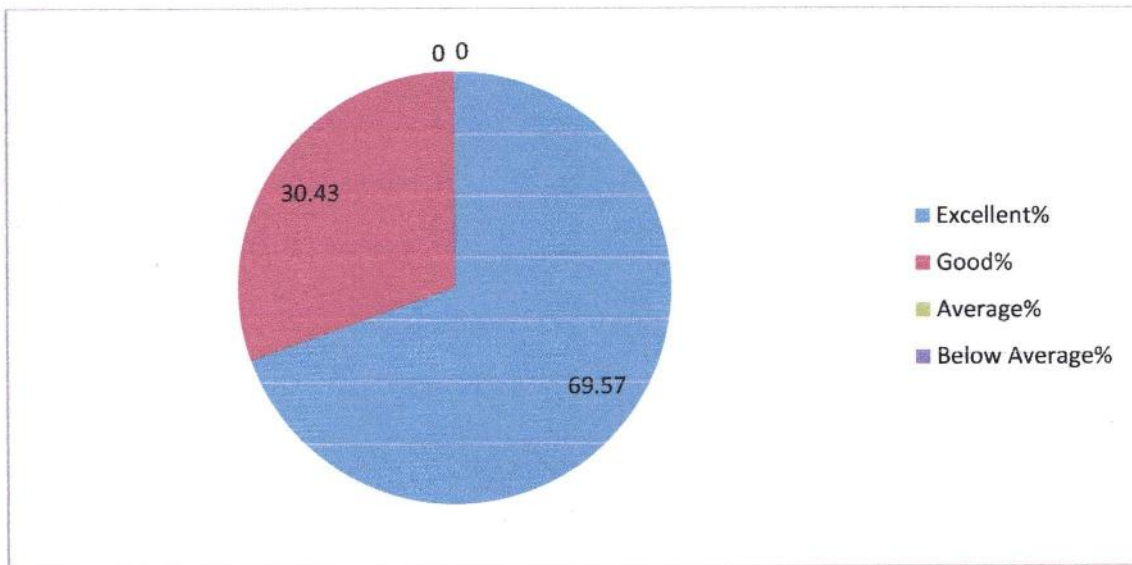
MAJALGAON, DIST.BEED (MH)-431131

NAAC Re-Accredited "A" Grade

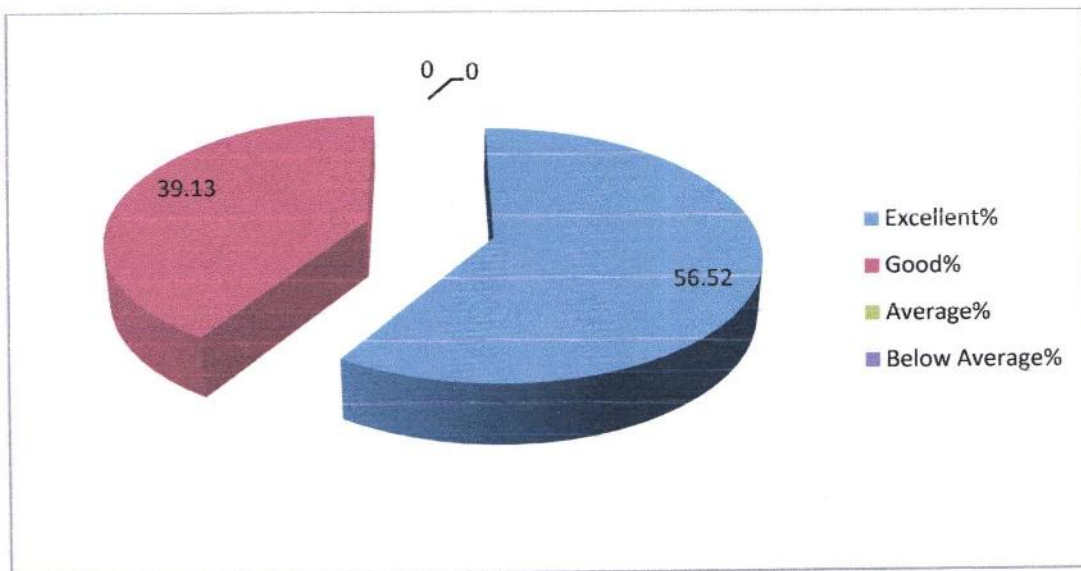


Feedback Analysis

11. Creation of interest to pursue higher education



12. Overall Rating





M.S.P.Mandal's
SUNDERRAO SOLANKE MAHAVIDYALAYA

MAJALGAON, DIST.BEED (MH)-431131

NAAC Re-Accredited "A" Grade



Feedback Analysis

Respondent details

Responses: 23

1. Fulfillment of my learning needs

It is found that the maximum (22) of student's respondent opined Fulfillment of my learning needs found excellent, 01 think as good, 1 opined as it is average.

2. Applicability of the curriculum to real life situations

The highest (12) respondents from the total students noted Applicability of the curriculum to real life situations excellent; followed by 10 remarked as good, 1 opined as it is average.

3. Clarity about the course objectives

From the total 23 respondents, (19) respondents opined that Clarity about the course objectives is excellent, 04 opined it is good.

4. Weightage given to employability

From the total 23 respondents, 12 respondents opined Weightage given to employability is excellent, 11 opined it is good..

5. Weightage given to skill development

It is found that the 10 number of respondents opined that Weightage given to skill development is excellent. 13 thinks in this case as good.

6. Weightage given to entrepreneurship

The collected information indicate that the maximum number of respondents (17) found Weightage given to entrepreneurship is excellent, followed by 6 says it is good.

7. Difficulty level of the course content

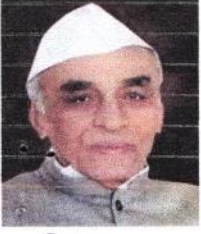
From the total 23 respondents, highest (15) of the respondents opined Difficulty level of the course content found excellent. 08 think as good.

8. Promotion of independent thinking by Curriculum

It is found that the highest (12) number of respondents opined that Promotion of independent thinking by Curriculum is excellent. 11 thinks in this case as good.

9 Usefulness of the curriculum at workplace

It is found that the maximum (17) of respondent opined that Usefulness of the curriculum at workplace found excellent, 6 think as good.



M.S.P.Mandal's
SUNDERRAO SOLANKE MAHAVIDYALAYA

MAJALGAON, DIST.BEED (MH)-431131

NAAC Re-Accredited "A" Grade



Feedback Analysis

10 Usefulness of the curriculum in my higher education

The highest (15) respondents from the total students noted that the Usefulness of the curriculum in my higher education is excellent; followed by 8 remarked as good..

11. Fulfillment of learning objectives

From the total 23 respondents, majority (16) of student respondents opined that Fulfillment of learning objectives are excellent, 7 opined it is good.

12. Overall rating

It is found that (13) of the respondent opined that the Overall rating found excellent, 09 think as good.

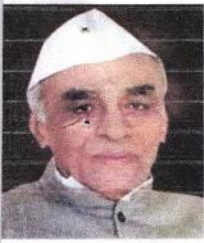
Coordinator

Internal Quality Assurance Cell (IQAC)
Sunderrao Solanke Mahavidyalaya,
Majalgaon, Dist.Beed (MS)



PRINCIPAL

Sunderrao Solanke Mahavidyalaya
Majalgaon Dist. Beed (M.S.)



M.S.P.Mandal's
SUNDERRAO SOLANKE MAHAVIDYALAYA
MAJALGAON, DIST.BEED (MH)-431131
NAAC Re-Accredited "A" Grade



Feedback Analysis

Marathwada Shikshan Prasarak Mandal's

**Sunderrao Solanke Mahavidyalaya, Majalgaon
Dist. Beed**

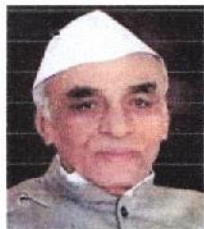


INTERNAL QUALITY ASSURANCE CELL



FEEDBACK ANALYSIS

2018-2019



M.S.P.Mandal's

SUNDERRAO SOLANKE MAHAVIDYALAYA

MAJALGAON, DIST.BEED (MH)-431131

NAAC Re-Accredited "A" Grade



Feedback Analysis

A REPORT ON FEEDBACK FROM TEACHERS ON CURRICULUM

ACADEMIC YEAR 2018 – 2019

Feedback on Curriculum collected from the Students on college for academic year 2018-2019 on various important aspects which include:

- 1 Applicability of the syllabus to local developmental needs
- 2 Difficulty level of the syllabus
- 3 Clarity about the course objectives
- 4 Weightage given to employability
- 5 Depth of the Course Content
- 6 Incorporation of latest knowledge & information
- 7 Research Possibilities
- 8 Mechanism used for development/ revision of curriculum by BoS
- 9 Weightage given to learning values like knowledge, skills, analytical abilities, etc.
- 10 Relevance of course outcomes
- 11 Quality and clarity of textual/ study/ reference material suggested
- 12 Overall rating

18 Teachers participated in the survey consisting of 12 aspects/questions on the Curriculum.



M.S.P.Mandal's
SUNDERRAO SOLANKE MAHAVIDYALAYA

MAJALGAON, DIST.BEED (MH)-431131

NAAC Re-Accredited "A" Grade



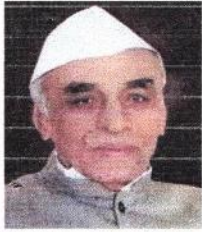
Feedback Analysis

M.S.P.Mandal's

Sunderrao Solanke Mahavidyalaya Majalgaon

TEACHER FEEDBACK ON CURRICULUM

Sr. NO.	PARAMETERS	Excellent	Good	Average	Below Average
1	Applicability of the syllabus to local developmental needs	88.89	11.11	0.00	0
2	Difficulty level of the syllabus	38.89	61.11	0.00	0
3	Clarity about the course objectives	88.89	11.11	0.00	0
4	Weightage given to employability	44.44	50.00	5.56	0
5	Depth of the Course Content	77.78	22.22	0.00	0
6	Incorporation of latest knowledge & information	61.11	33.33	5.56	0
7	Research Possibilities	72.22	27.78	0.00	0
8	Mechanism used for development/ revision of curriculum by BoS	66.67	33.33	0.00	0
9	Weightage given to learning values like knowledge, skills, analytical abilities, etc.	83.33	16.67	0.00	0
10	Relevance of course outcomes	72.22	27.78	0.00	0
11	Quality and clarity of textual/ study/ reference material suggested	77.78	22.22	0.00	0
12	Overall rating	27.78	72.22	0.00	0



M.S.P.Mandal's
SUNDERRAO SOLANKE MAHAVIDYALAYA

MAJALGAON, DIST.BEED (MH)-431131

NAAC Re-Accredited "A" Grade

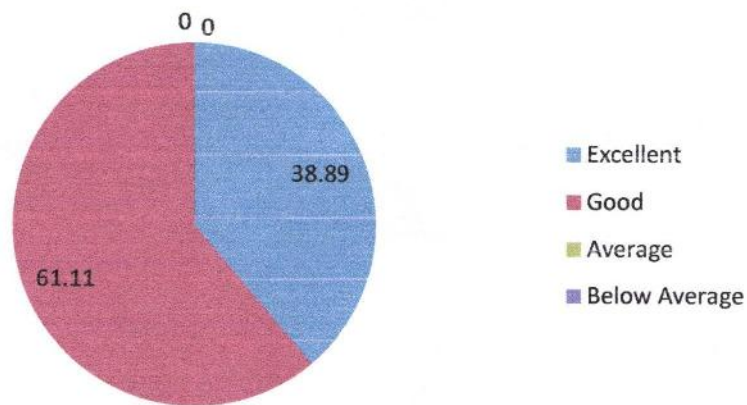


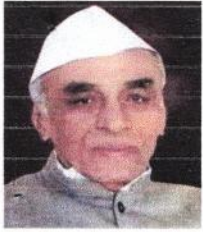
Feedback Analysis

Applicability of the syllabus to local developmental needs



Difficulty level of the syllabus





M.S.P.Mandal's
SUNDERRAO SOLANKE MAHAVIDYALAYA

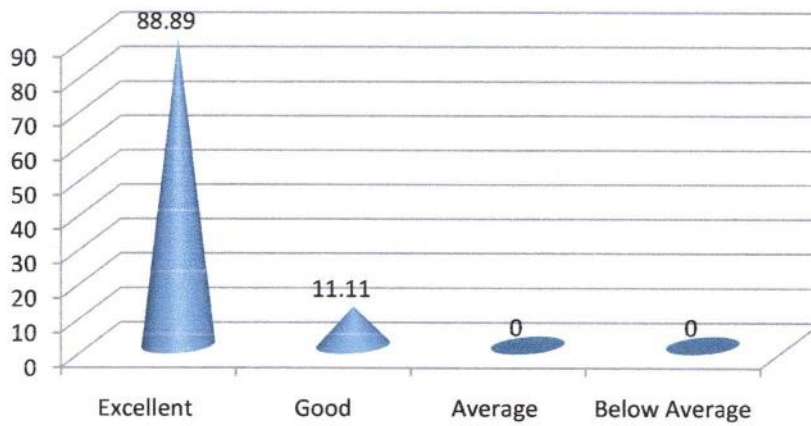
MAJALGAON, DIST.BEED (MH)-431131

NAAC Re-Accredited "A" Grade

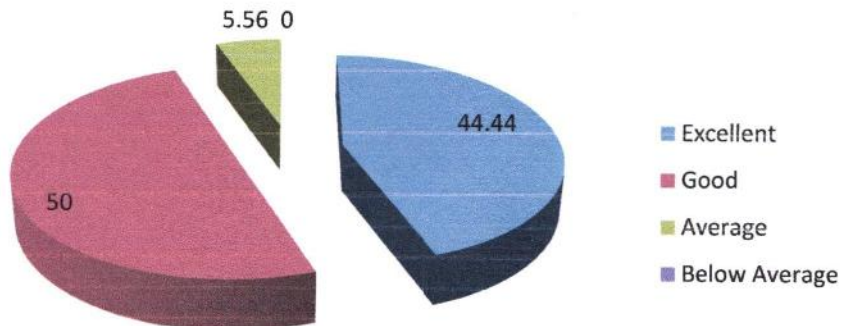


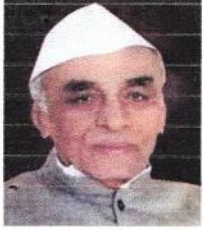
Feedback Analysis

Clarity about the course objectives



Weightage given to employability





M.S.P.Mandal's
SUNDERRAO SOLANKE MAHAVIDYALAYA

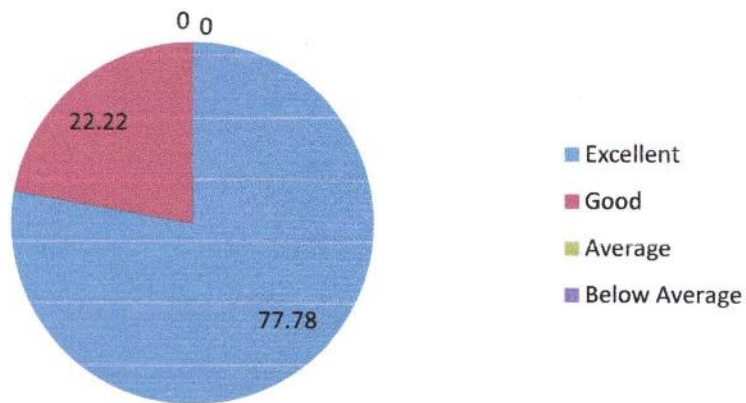
MAJALGAON, DIST.BEED (MH)-431131

NAAC Re-Accredited "A" Grade

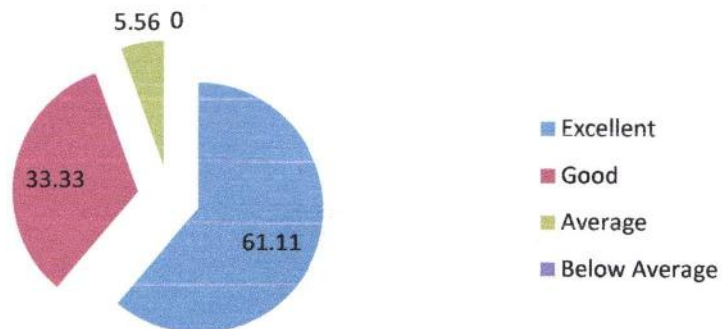


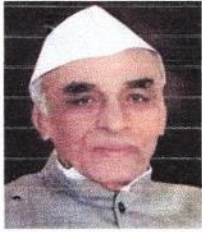
Feedback Analysis

Depth of the Course Content



Incorporation of latest knowledge & information





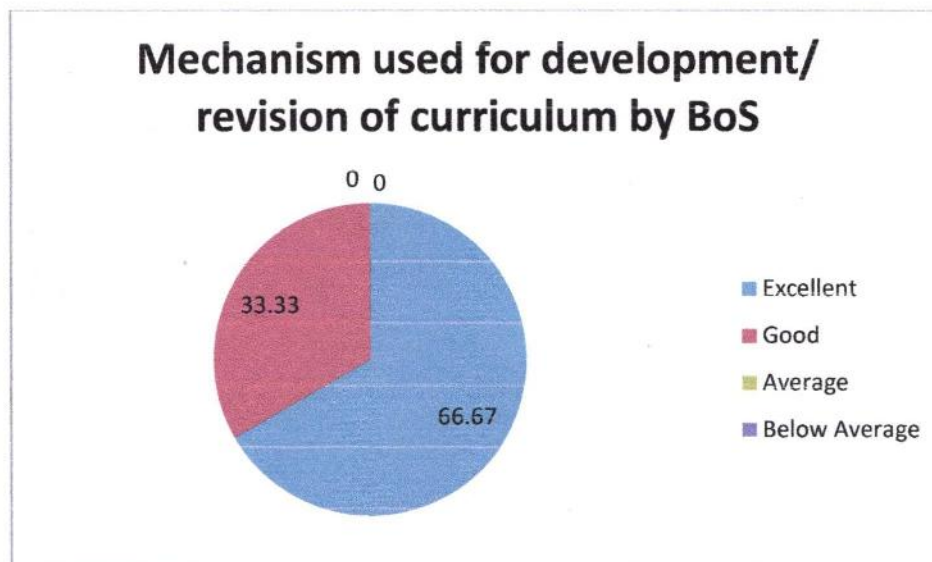
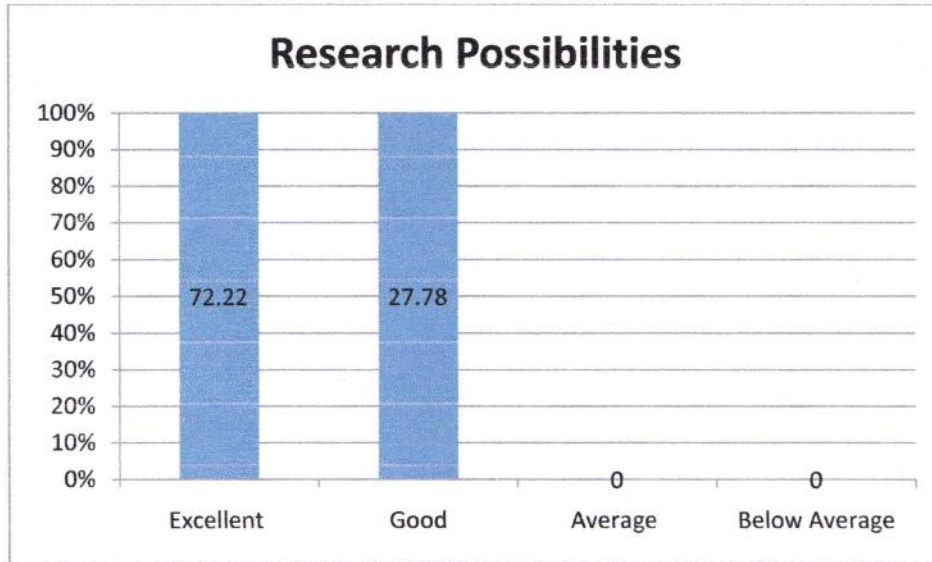
M.S.P.Mandal's
SUNDERRAO SOLANKE MAHAVIDYALAYA

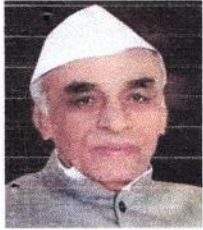
MAJALGAON, DIST.BEED (MH)-431131

NAAC Re-Accredited "A" Grade



Feedback Analysis





M.S.P.Mandal's
SUNDERRAO SOLANKE MAHAVIDYALAYA

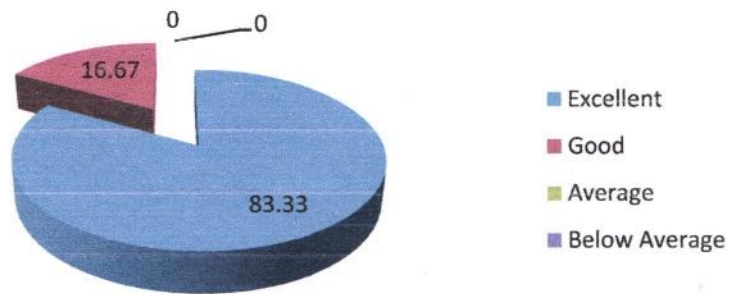
MAJALGAON, DIST.BEED (MH)-431131

NAAC Re-Accredited "A" Grade

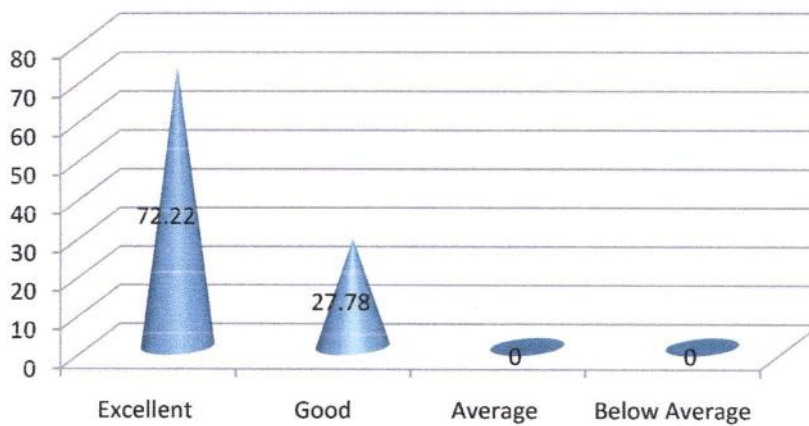


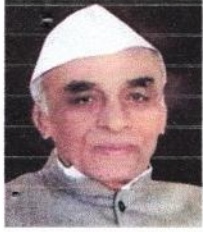
Feedback Analysis

**Weightage given to learning values
like knowledge, skills, analytical
abilities, etc.**



Relevance of course outcomes





M.S.P.Mandal's
SUNDERRAO SOLANKE MAHAVIDYALAYA

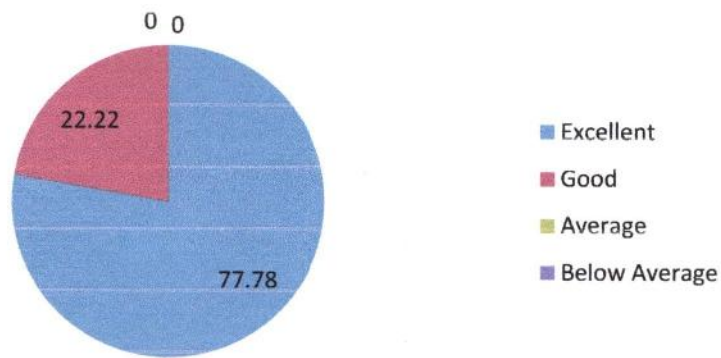
MAJALGAON, DIST.BEED (MH)-431131

NAAC Re-Accredited "A" Grade

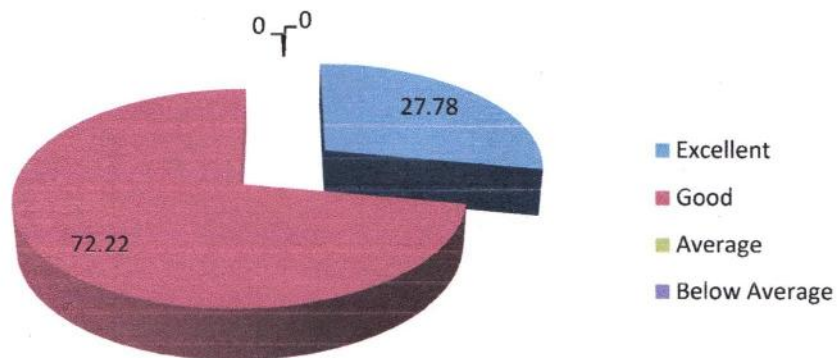


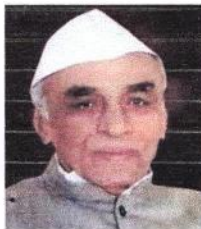
Feedback Analysis

**Quality and clarity of textual/ study/
reference material suggested**



Overall rating





M.S.P.Mandal's
SUNDERRAO SOLANKE MAHAVIDYALAYA

MAJALGAON, DIST.BEED (MH)-431131

NAAC Re-Accredited "A" Grade



Feedback Analysis

Respondent details

Responses:18

1. Applicability of the syllabus to local developmental needs

It is found that the maximum (16) of student's respondent opined that the Applicability of the syllabus to local developmental needs found excellent, 02 think as good.

2. Difficulty level of the syllabus

The (07) respondents from the total respondents noted that the Difficulty level of the syllabus is excellent; followed by 11 remarked as good.

3. Clarity about the course objectives

From the total 18 respondents, majority (16) of student respondents opined that Clarity about the course objectives are excellent, 2 opined it is good.

4. Weightage given to employability

From the total 18 respondents, (08) of respondents opined Weightage given to employability is excellent, 9 opined it is good 01 think average.

5. Depth of the Course Content

It is found that the (14) number of respondents opined that Depth of the Course Content is excellent. 4 think in this case as good.

6. Incorporation of latest knowledge & information

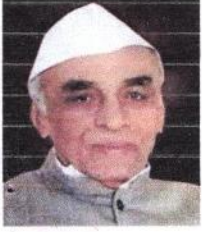
The collected information indicate that the maximum number of respondents (11) found the Incorporation of latest knowledge & information is excellent, followed by 6 says it is good, 01 says average.

7. Research Possibilities

From the total 18 respondents, highest (13) of the respondents opined that Quality of support material found excellent. 5 think as good.

8. Mechanism used for development/ revision of curriculum by BoS

It is found that the (12) number of respondents opined that Mechanism used for development/ revision of curriculum by BoS excellent. 6 think in this case as good.



M.S.P.Mandal's
SUNDERRAO SOLANKE MAHAVIDYALAYA

MAJALGAON, DIST.BEED (MH)-431131

NAAC Re-Accredited "A" Grade



Feedback Analysis

9. Weightage given to learning values like knowledge, skills, analytical abilities, etc.

It is found that the (15) of respondent opined that Weightage given to learning values like knowledge, skills, analytical abilities, etc. are excellent. 03 thinks good about it.

10. Relevance of course outcomes

The highest (13) respondents noted that Relevance of course outcomes is Excellent; followed by 05 remarked as good.

11 Quality and clarity of textual/ study/ reference material suggested

14 of the respondents opined that Quality and clarity of textual/ study/ reference material suggested is excellent, 04 opined it is good.

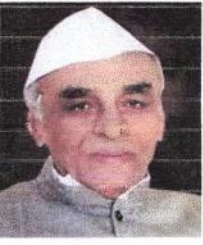
12. Overall rating

It is found that the (05) of student's respondent opined that the Overall Rating of the College found is excellent, 13 think good about it.


Coordinator
Internal Quality Assurance Cell (IQAC)
Sunderrao Solanke Mahavidyalaya,
Majalgaon, Dist.Beed (MS)




PRINCIPAL
Sunderrao Solanke Mahavidyalaya
- Majalgaon Dist. Beed (M.S.)



M.S.P.Mandal's
SUNDERRAO SOLANKE MAHAVIDYALAYA

MAJALGAON, DIST.BEED (MH)-431131

NAAC Re-Accredited "A" Grade



Feedback Analysis

Marathwada Shikshan Prasarak Mandal's

**Sunderrao Solanke Mahavidyalaya, Majalgaon
Dist. Beed**

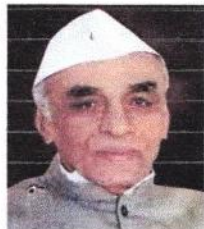


INTERNAL QUALITY ASSURANCE CELL



FEEDBACK ANALYSIS

2018-2019



M.S.P.Mandal's

SUNDERRAO SOLANKE MAHAVIDYALAYA

MAJALGAON, DIST.BEED (MH)-431131

NAAC Re-Accredited "A" Grade



Feedback Analysis

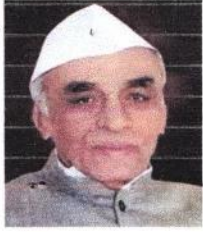
A REPORT ON FEEDBACK FROM SUBJECT EXPERTS ON CURRICULUM

ACADEMIC YEAR 2018 – 2019

Feedback on Curriculum collected from the Students on college for academic year 2018-2019 on various important aspects which include:

- 1 Applicability of the syllabus to local developmental needs
- 2 Difficulty level of the syllabus
- 3 Clarity about the course objectives
- 4 Weightage given to employability
- 5 Depth of the Course Content
- 6 Incorporation of latest knowledge & information
- 7 Research Possibilities
- 8 Mechanism used for development/ revision of curriculum by BoS
- 9 Weightage given to learning values like knowledge, skills, analytical abilities, etc.
- 10 Relevance of course outcomes
- 11 Quality and clarity of textual/ study/ reference material suggested
- 12 Overall rating

8 Subject experts participated in the survey consisting of 12 aspects/questions on the Curriculum.



M.S.P.Mandal's
SUNDERRAO SOLANKE MAHAVIDYALAYA

MAJALGAON, DIST.BEED (MH)-431131

NAAC Re-Accredited "A" Grade



Feedback Analysis

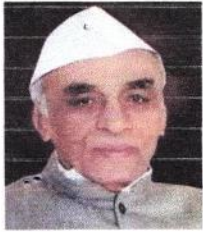
M.S.P.Mandal's

Sunderrao Solanke Mahavidyalaya Majalgaon

SUBJECT EXPERT FEEDBACK ON CURRICULUM

ACADEMIC YEAR -2018-19

Sr. NO.	PARAMETERS	Excellent	Good	Average	Below Average
1	Applicability of the syllabus to local developmental needs	87.50	12.50	0.00	0.00
2	Difficulty level of the syllabus	62.50	37.50	0.00	0.00
3	Clarity about the course objectives	62.50	37.50	0.00	0.00
4	Weightage given to employability	62.50	37.50	0.00	0.00
5	Depth of the Course Content	50.00	50.00	0.00	0.00
6	Incorporation of latest knowledge & information	62.50	37.50	0.00	0.00
7	Research Possibilities	50.00	50.00	0.00	0.00
8	Mechanism used for development/ revision of curriculum by BoS	50.00	50.00	0.00	0.00
9	Weightage given to learning values like knowledge, skills, analytical abilities, etc.	100.00	0.00	0.00	0.00
10	Relevance of course outcomes	50.00	50.00	0.00	0.00
11	Quality and clarity of textual/ study/ reference material suggested	50.00	50.00	0.00	0.00
12	Overall rating	62.50	37.50	0.00	0.00



M.S.P.Mandal's
SUNDERRAO SOLANKE MAHAVIDYALAYA

MAJALGAON, DIST.BEED (MH)-431131

NAAC Re-Accredited "A" Grade

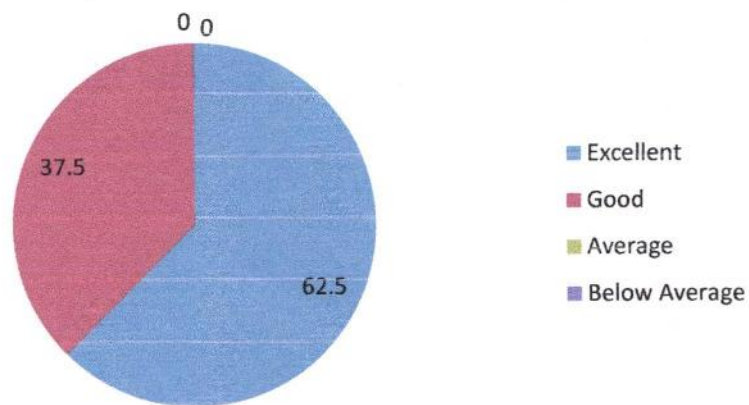


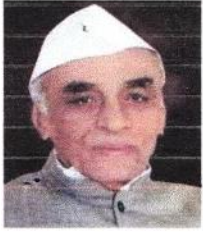
Feedback Analysis

Clarity about the course objectives



Weightage given to employability





M.S.P.Mandal's
SUNDERRAO SOLANKE MAHAVIDYALAYA

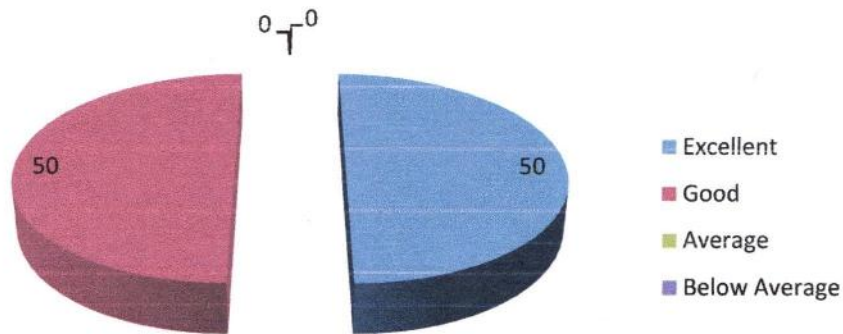
MAJALGAON, DIST.BEED (MH)-431131

NAAC Re-Accredited "A" Grade

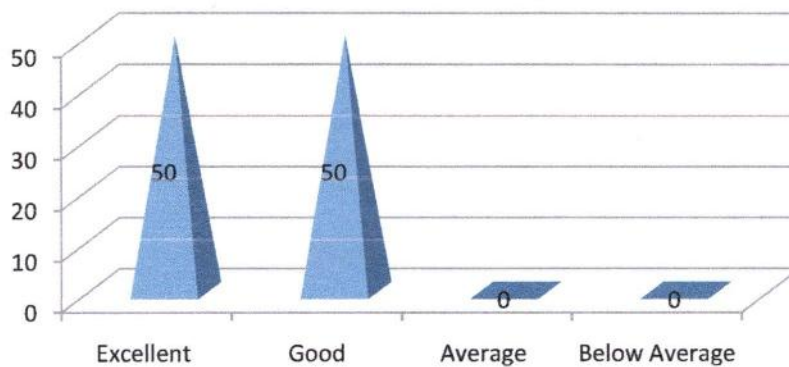


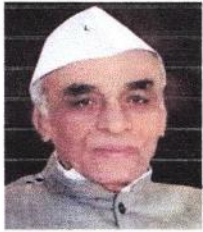
Feedback Analysis

Research Possibilities



**Mechanism used for development/
revision of curriculum by BoS**





M.S.P.Mandal's
SUNDERRAO SOLANKE MAHAVIDYALAYA

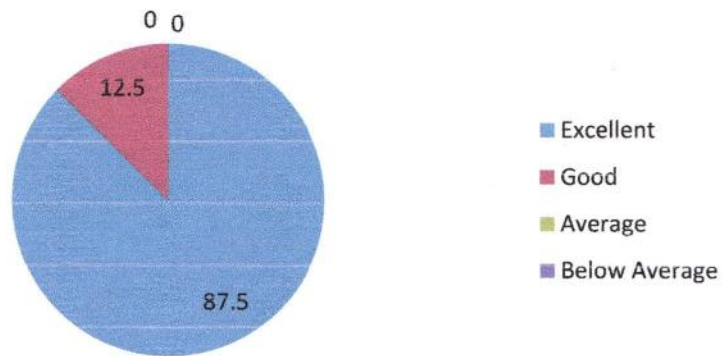
MAJALGAON, DIST.BEED (MH)-431131

NAAC Re-Accredited "A" Grade

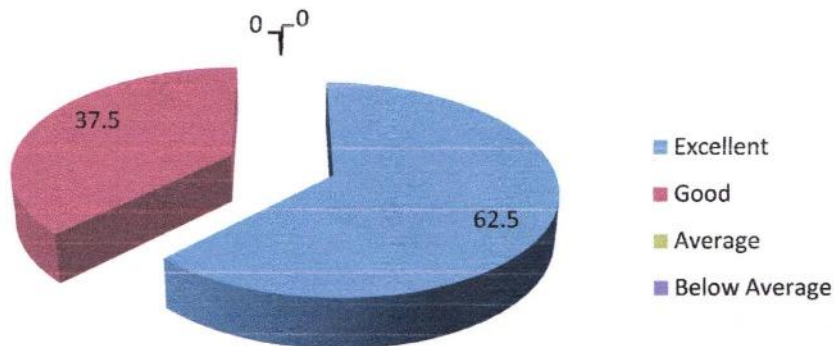


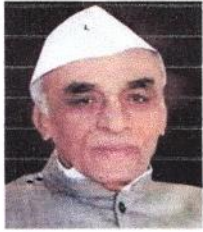
Feedback Analysis

Applicability of the syllabus to local developmental needs



Difficulty level of the syllabus





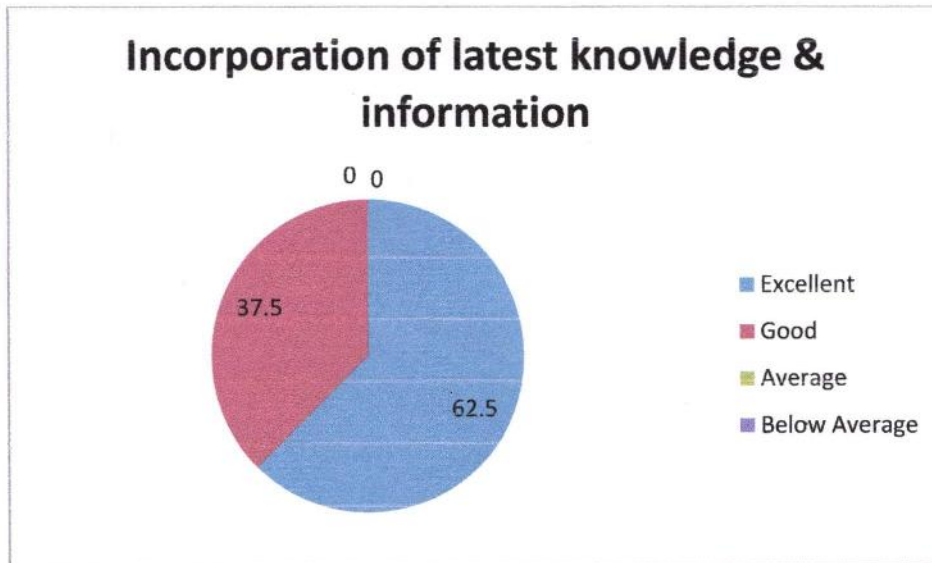
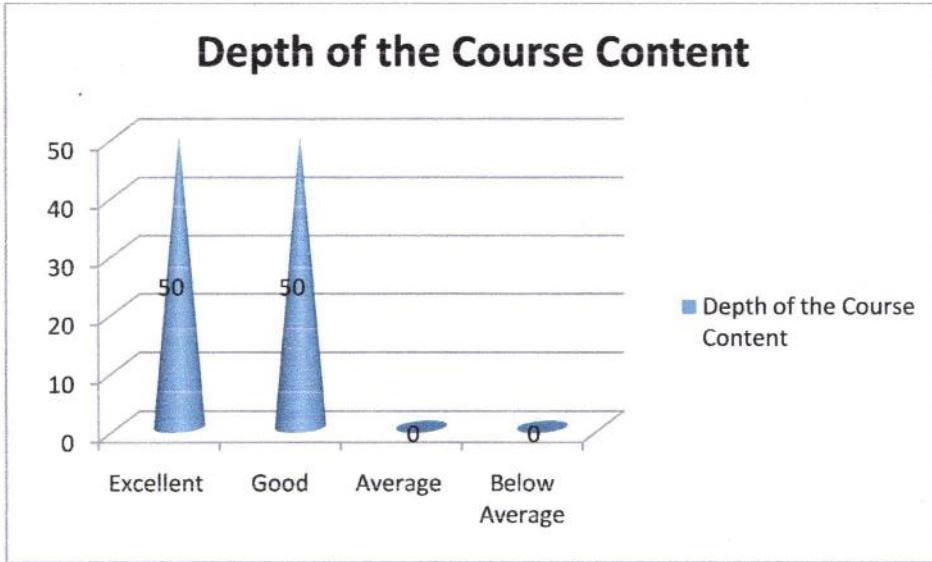
M.S.P.Mandal's
SUNDERRAO SOLANKE MAHAVIDYALAYA

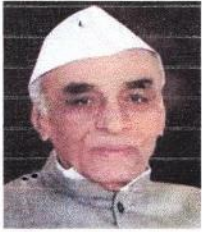
MAJALGAON, DIST.BEED (MH)-431131

NAAC Re-Accredited "A" Grade



Feedback Analysis





M.S.P.Mandal's
SUNDERRAO SOLANKE MAHAVIDYALAYA

MAJALGAON, DIST.BEED (MH)-431131

NAAC Re-Accredited "A" Grade

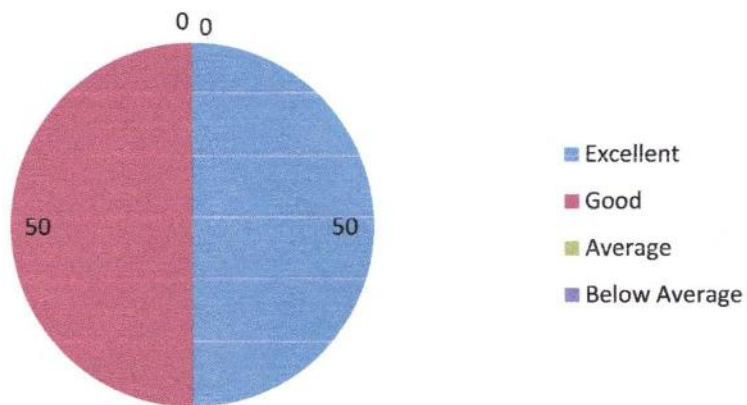


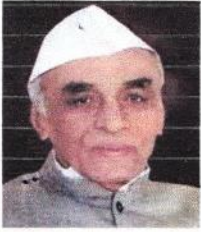
Feedback Analysis

**Weightage given to learning values
like knowledge, skills, analytical
abilities, etc.**



Relevance of course outcomes





M.S.P.Mandal's
SUNDERRAO SOLANKE MAHAVIDYALAYA

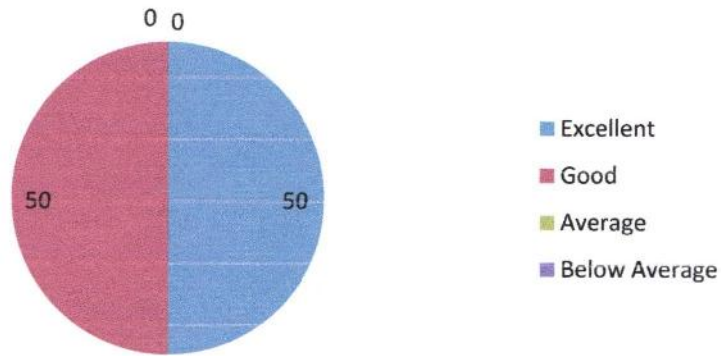
MAJALGAON, DIST.BEED (MH)-431131

NAAC Re-Accredited "A" Grade

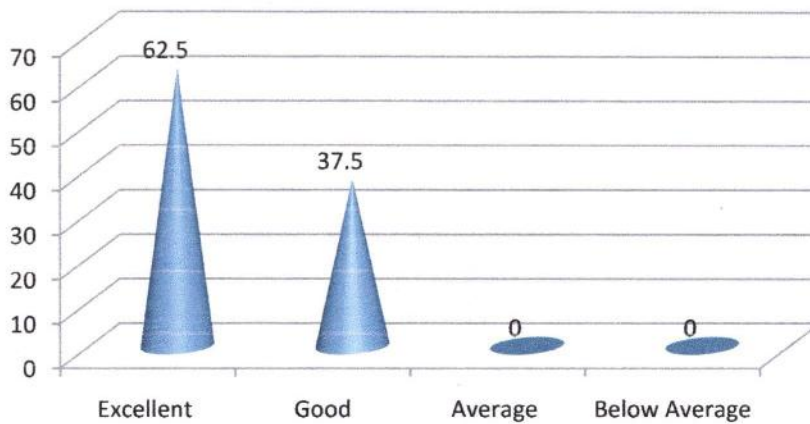


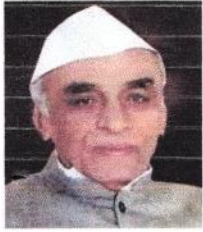
Feedback Analysis

**Quality and clarity of textual/ study/
reference material suggested**



Overall rating





M.S.P.Mandal's
SUNDERRAO SOLANKE MAHAVIDYALAYA

MAJALGAON, DIST.BEED (MH)-431131

NAAC Re-Accredited "A" Grade



Feedback Analysis

Respondent details

Responses: 08

1. Applicability of the syllabus to local developmental needs

It is found that the maximum (07) of student's respondent opined that the Applicability of the syllabus to local developmental needs found excellent, 01 think as good.

2. Difficulty level of the syllabus

The highest (05) respondents from the total respondents noted that the Difficulty level of the syllabus is excellent; followed by 03 remarked as good.

3. Clarity about the course objectives

From the total 08 respondents, majority (05) of student respondents opined that Clarity about the course objectives are excellent, 3 opined it is good.

4. Weightage given to employability

From the total 08 respondents, majority (05) of respondents opined Weightage given to employability is excellent, 3 opined it is good.

5. Depth of the Course Content

It is found that the (04) number of respondents opined that Depth of the Course Content is excellent. 4 thinks in this case as good.

6. Incorporation of latest knowledge & information

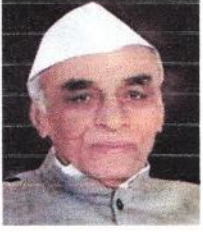
The collected information indicate that the maximum number of respondents (05) found the Incorporation of latest knowledge & information is excellent, followed by 3 says it is good,

7. Research Possibilities

From the total 25 respondents, highest (15) of the respondents opined that Quality of support material found excellent. 4 think as good, 6 opined as it is satisfactory.

8. Mechanism used for development/ revision of curriculum by BoS

It is found that the (04) number of respondents opined that Mechanism used for development/ revision of curriculum by BoS excellent. 4 think in this case as good.



M.S.P.Mandal's
SUNDERRAO SOLANKE MAHAVIDYALAYA

MAJALGAON, DIST.BEED (MH)-431131

NAAC Re-Accredited "A" Grade



Feedback Analysis

9. Weightage given to learning values like knowledge, skills, analytical abilities, etc.

It is found that the all (08) of respondent opined that Weightage given to learning values like knowledge, skills, analytical abilities, etc. are excellent.

10. Relevance of course outcomes

The highest (04) respondents noted that Relevance of course outcomes is Excellent; followed by 04 remarked as good.

11 Quality and clarity of textual/ study/ reference material suggested

04 of student respondents opined that Quality and clarity of textual/ study/ reference material suggested is excellent, 04 opined it is good.

12. Overall rating

It is found that the maximum (05) of student's respondent opined that the Overall Rating of the College found is excellent, 03 think as good.

Coordinator
Internal Quality Assurance Cell (IQAC)
Sunderrao Solanke Mahavidyalaya,
Majalgaon, Dist.Beed (MS)



PRINCIPAL
Sunderrao Solanke Mahavidyalaya
Majalgaon Dist. Beed (M.S.)



M.S.P.Mandal's
SUNDERRAO SOLANKE MAHAVIDYALAYA
MAJALGAON, DIST.BEED (MH)-431131
NAAC Re-Accredited "A" Grade



Feedback Analysis

Marathwada Shikshan Prasarak Mandal's

Sunderrao Solanke Mahavidyalaya, Majalgaon
Dist. Beed

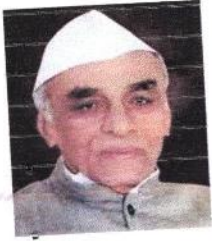


INTERNAL QUALITY ASSURANCE CELL



FEEDBACK ANALYSIS

2018-2019



M.S.P.Mandal's

SUNDERRAO SOLANKE MAHAVIDYALAYA

MAJALGAON, DIST.BEED (MH)-431131

NAAC Re-Accredited "A" Grade

Feedback Analysis

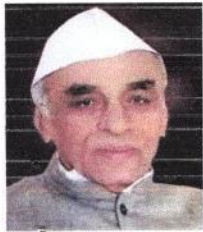
A REPORT ON FEEDBACK FROM ALUMNI ON CURRICULUM

ACADEMIC YEAR 2018 – 2019

Feedback on Curriculum collected from the Alumni the college for academic year 2018-2019 on various important aspects which include:

- 1 Fulfillment of my learning needs
- 2 Applicability of the curriculum to real life situations
- 3 Clarity about the course objectives
- 4 Weightage given to employability
- 5 Weightage given to skill development
- 6 Weightage given to entrepreneurship
- 7 Difficulty level of the course content
- 8 Promotion of independent thinking by Curriculum
- 9 Usefulness of the curriculum at workplace
- 10 Usefulness of the curriculum in my higher education
- 11 Fulfillment of learning objectives
- 12 Overall rating

30 Alumni participated in the survey consisting of 12 aspects/questions on the Curriculum.



M.S.P.Mandal's
SUNDERRAO SOLANKE MAHAVIDYALAYA

MAJALGAON, DIST.BEED (MH)-431131

NAAC Re-Accredited "A" Grade



Feedback Analysis

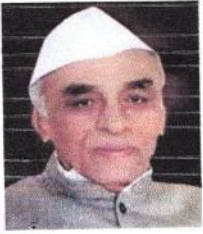
M.S.P.Mandal's

Sunderrao Solanke Mahavidyalaya Majalgaon

ALUMNI FEEDBACK ON CURRICULUM

ACADEMIC YEAR -2018-19

Sr. NO.	PARAMETERS	Excellent %	Good%	Average %	Below Average %
1	Fulfillment of my learning needs	93.33	6.67	0.00	0
2	Applicability of the curriculum to real life situations	50.00	50.00	0.00	0
3	Clarity about the course objectives	43.33	56.67	0.00	0
4	Weightage given to employability	46.67	53.33	0.00	0
5	Weightage given to skill development	46.67	53.33	0.00	0
6	Weightage given to entrepreneurship	40.00	56.67	3.33	0
7	Difficulty level of the course content	53.33	40.00	6.67	0
8	Promotion of independent thinking by Curriculum	53.33	40.00	6.67	0
9	Usefulness of the curriculum at workplace	66.67	20.00	13.33	0
10	Usefulness of the curriculum in my higher education	93.33	6.67	0.00	0
11	Fulfillment of learning objectives	76.67	23.33	0.00	0
12	Overall rating	30.00	70.00	0.00	0



M.S.P.Mandal's
SUNDERRAO SOLANKE MAHAVIDYALAYA

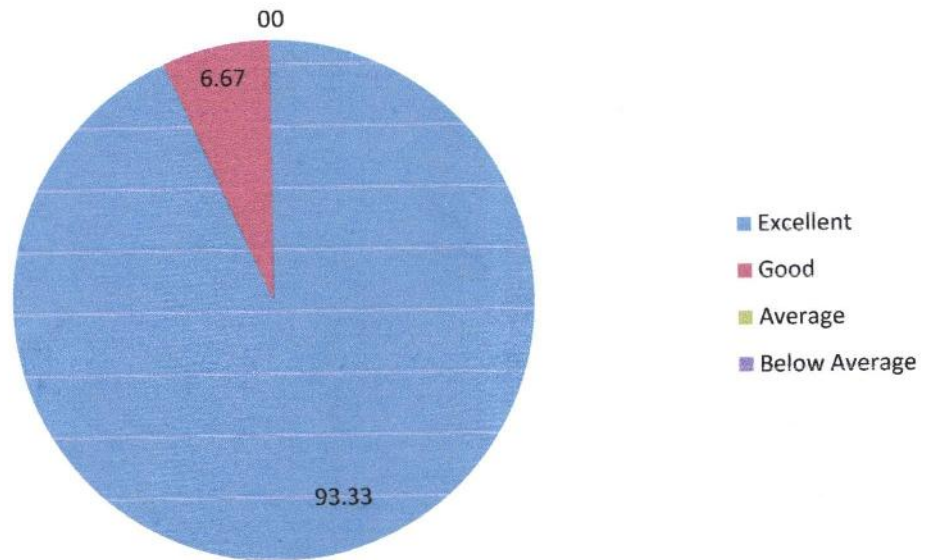
MAJALGAON, DIST.BEED (MH)-431131

NAAC Re-Accredited "A" Grade

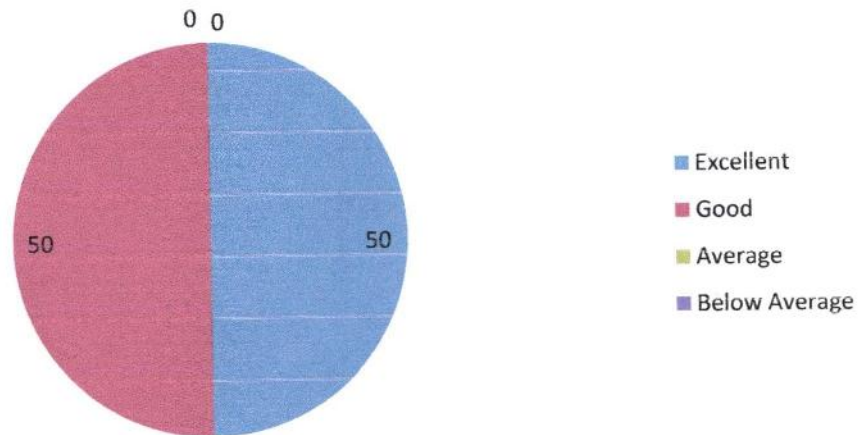


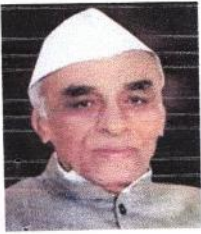
Feedback Analysis

1. Fulfillment of my learning needs



2. Applicability of the curriculum to real life situations





M.S.P.Mandal's
SUNDERRAO SOLANKE MAHAVIDYALAYA

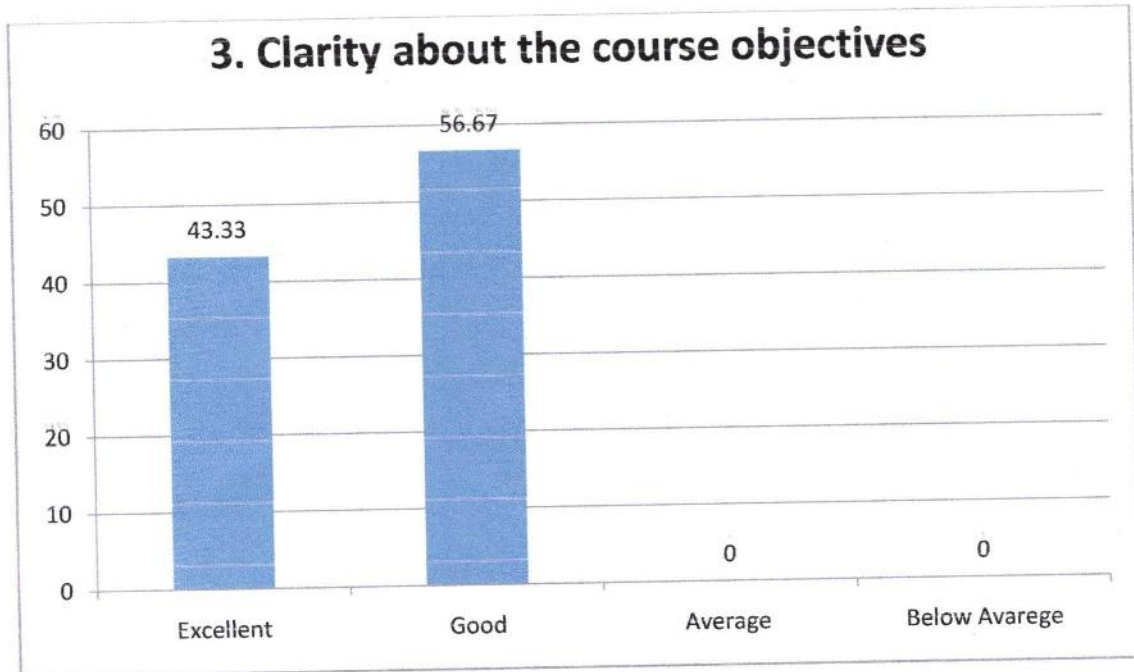
MAJALGAON, DIST.BEED (MH)-431131

NAAC Re-Accredited "A" Grade

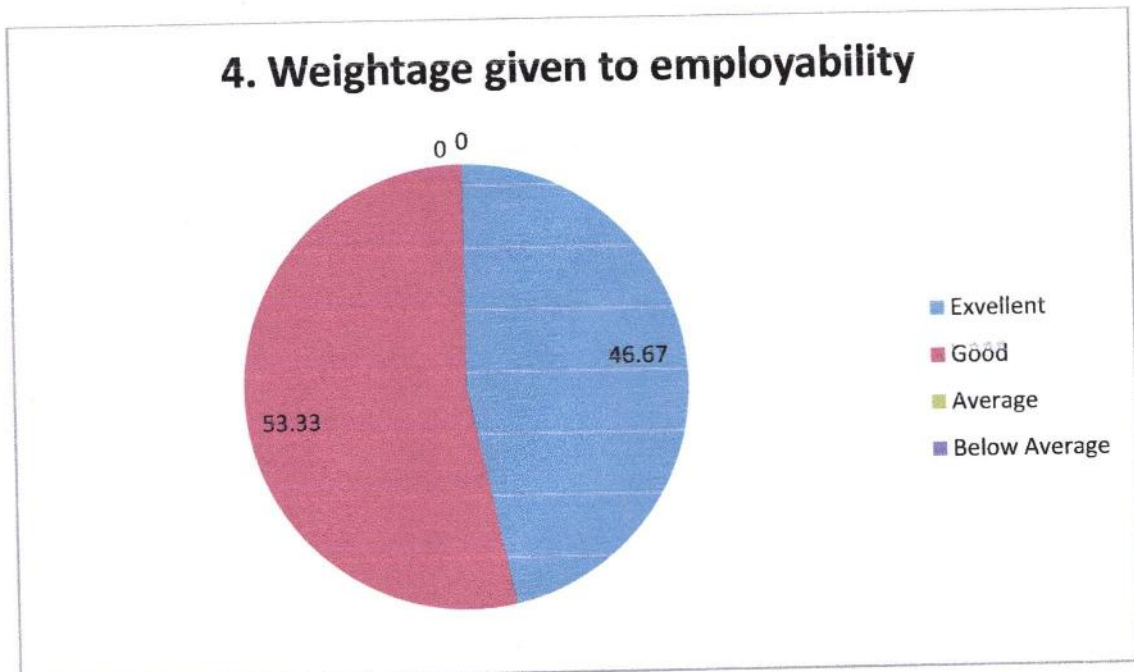


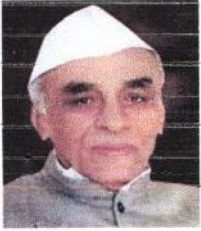
Feedback Analysis

3. Clarity about the course objectives



4. Weightage given to employability





M.S.P.Mandal's
SUNDERRAO SOLANKE MAHAVIDYALAYA

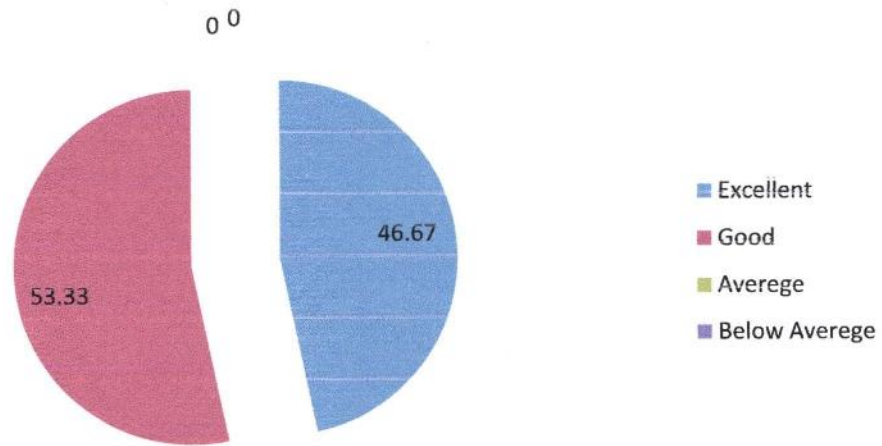
MAJALGAON, DIST.BEED (MH)-431131

NAAC Re-Accredited "A" Grade

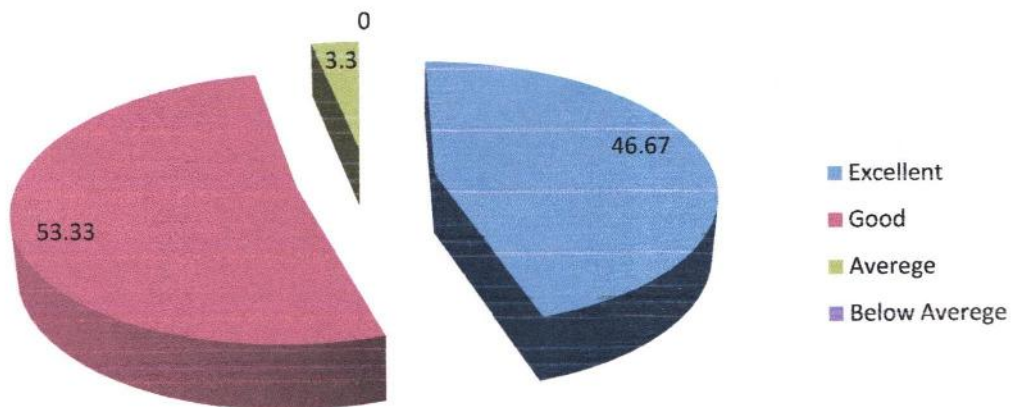


Feedback Analysis

5. Weightage given to skill developments



6. Weightage given to Entrepreneurship





M.S.P.Mandal's
SUNDERRAO SOLANKE MAHAVIDYALAYA

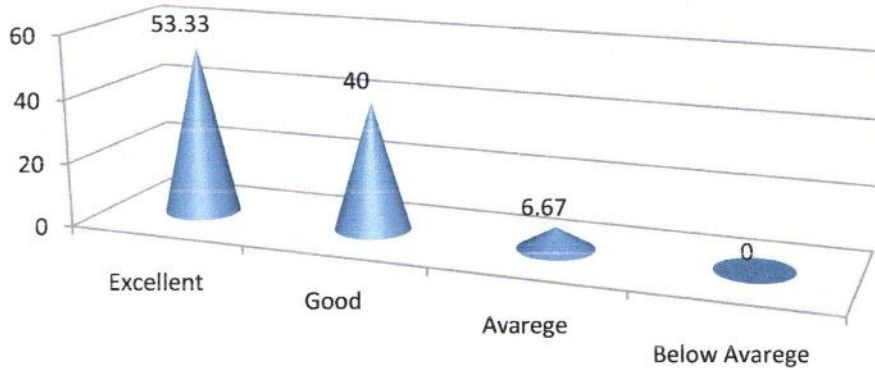
MAJALGAON, DIST.BEED (MH)-431131

NAAC Re-Accredited "A" Grade

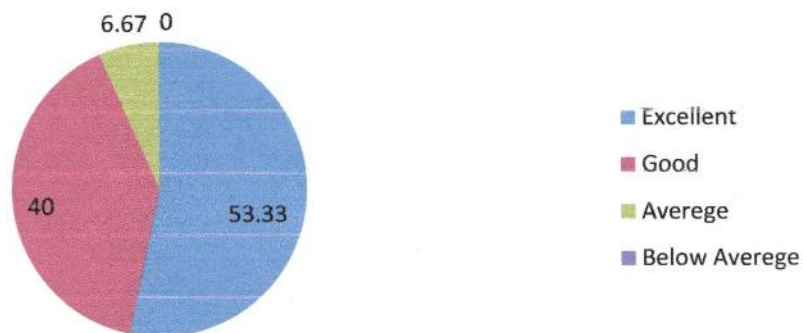


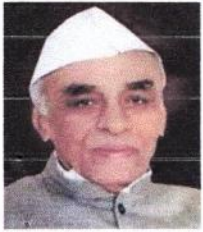
Feedback Analysis

7. Difficulty level of the course content



8. Promotion of independent thinking by Curriculum





M.S.P.Mandal's
SUNDERRAO SOLANKE MAHAVIDYALAYA

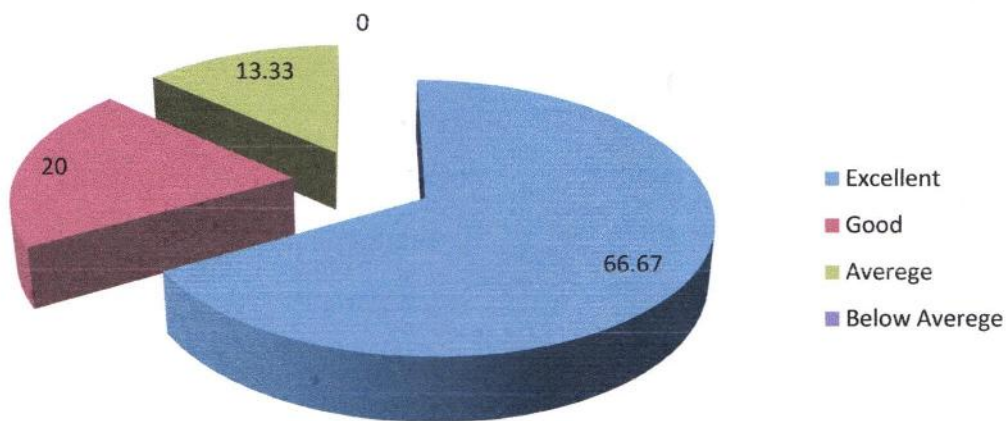
MAJALGAON, DIST.BEED (MH)-431131

NAAC Re-Accredited "A" Grade

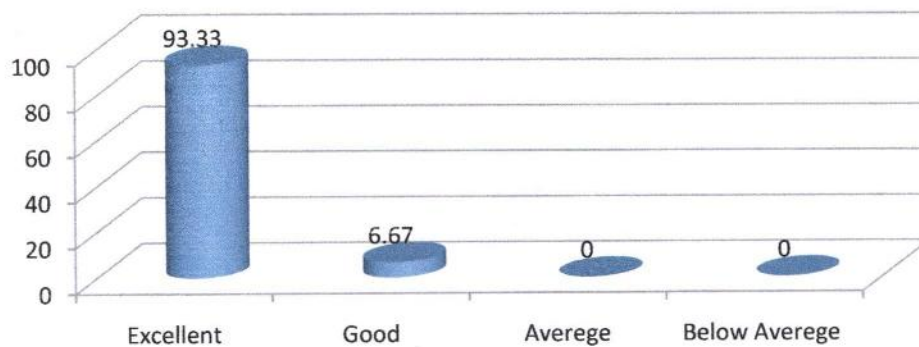


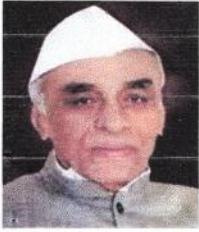
Feedback Analysis

9. Usefulness of the curriculum at workplace



10. Usefulness of the curriculum in my higher education





M.S.P.Mandal's
SUNDERRAO SOLANKE MAHAVIDYALAYA

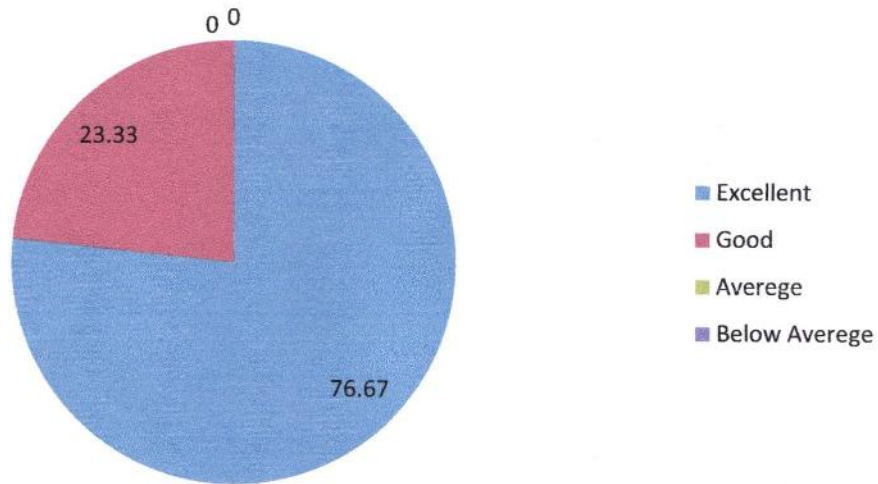
MAJALGAON, DIST.BEED (MH)-431131

NAAC Re-Accredited "A" Grade

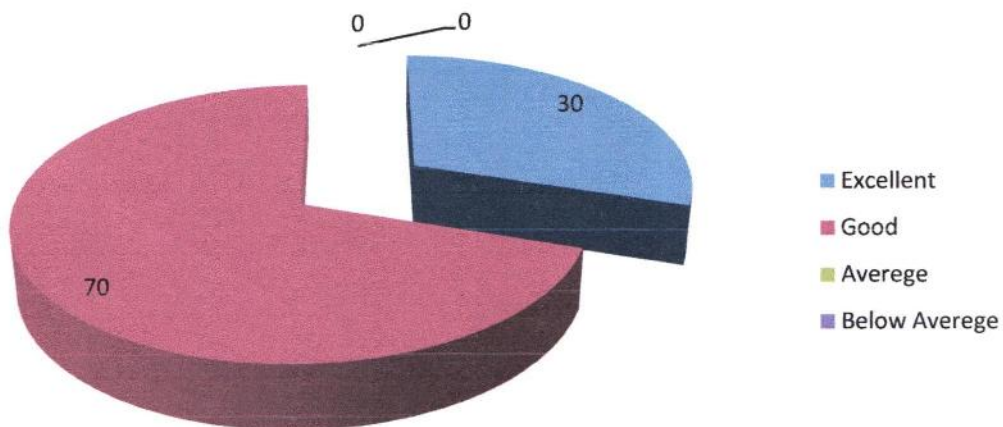


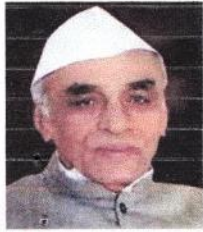
Feedback Analysis

11. Fulfillment of learning objectives



12. Overall rating





M.S.P.Mandal's
SUNDERRAO SOLANKE MAHAVIDYALAYA

MAJALGAON, DIST.BEED (MH)-431131

NAAC Re-Accredited "A" Grade



Feedback Analysis

Respondent details

Responses:30

1. Fulfillment of my learning needs

It is found that the maximum (28) of student's respondent opined Fulfillment of my learning needs found excellent, 02 think as good.

2. Applicability of the curriculum to real life situations

The highest (15) respondents from the total students noted Applicability of the curriculum to real life situations excellent; followed by 15 remarked as good.

3. Clarity about the course objectives

From the total 30 respondents, (13) respondents opined that Clarity about the course objectives is excellent, 17 opined it is good.

4. Weightage given to employability

From the total 30 respondents, 14 respondents opined Weightage given to employability is excellent, 16 opined it is good..

5. Weightage given to skill development

It is found that the 14 number of respondents opined that Weightage given to skill development is excellent. 16 thinks in this case as good.

6. Weightage given to entrepreneurship

The collected information indicate that the maximum number of respondents (17) found Weightage given to entrepreneurship is excellent, followed by 7 says it is good, 1 opined as it is avereg.

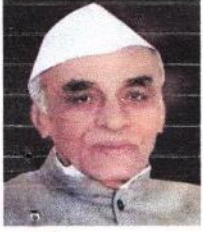
7. Difficulty level of the course content

From the total 30 respondents, highest (16) of the respondents opined Difficulty level of the course content found excellent. 12 think as good, 2 opined as it is avereg.

8. Promotion of independent thinking by Curriculum

It is found that the highest (16) number of respondents opined that Promotion of independent thinking by Curriculum is excellent. 12 thinks in this case as good, 2 opined as average.

9 Usefulness of the curriculum at workplace



M.S.P.Mandal's
SUNDERRAO SOLANKE MAHAVIDYALAYA

MAJALGAON, DIST.BEED (MH)-431131

NAAC Re-Accredited "A" Grade



Feedback Analysis

It is found that the maximum (20) of respondent opined that Usefulness of the curriculum at workplace found excellent, 6 think as good, 4 replied as it is average

10 Usefulness of the curriculum in my higher education

The highest (28) respondents from the total students noted that the Usefulness of the curriculum in my higher education is excellent; followed by 2 remarked as good..

11. Fulfillment of learning objectives

From the total 30 respondents, majority (23) of student respondents opined that Fulfillment of learning objectives are excellent, 7 opined it is good.

12. Overall rating

It is found that (09) of the respondent opined that the Overall rating found excellent, 21 think as good.


Coordinator

Internal Quality Assurance Cell (IQAC)
Sunderrao Solanke Mahavidyalaya,
Majalgaon, Dist.Beed (MS)




PRINCIPAL
Sunderrao Solanke Mahavidyalaya
Majalgaon Dist. Beed (M.S.)



M.S.P.Mandal's

Sunderrao Solanke Mahavidyalaya Majalgaon

STUDENT FEEDBACK ON CURRICULUM

ACADEMIC YEAR -2018-19

Name of Student: Dhaygude. Diya. Arun

Class: B.Sc.S.Y.

Department: Zoology.

Sr. NO	PARAMETERS	Excellent	Good	Average	Below Average
1	Fulfillment of my learning needs	✓			
2	Applicability of the curriculum to real life situations		✓		
3	Clarity about the course objectives	✓			
4	Weightage given to employability		✓		
5	Weightage given to skill development	✓			
6	Structure of the syllabus		✓		
7	Difficulty level of the course content		✓		
8	Promotion of independent thinking by curriculum	✓			
9	Exposure to new knowledge and practices	✓			
10	Weightage to practical /field work	✓			
11	Creation of interest to pursue higher education		✓		
12	Overall Rating	✓			

Coordinator

Internal Quality Assurance Cell (IQAC)
Sunderrao Solanke Mahavidyalaya,
Majalgaon, Dist. Beed (MS)

Signature

PRINCIPAL

Sunderrao Solanke Mahavidyalaya
Majalgaon Dist. Beed (M.S.)



M.S.P.Mandal's

Sunderrao Solanke Mahavidyalaya Majalgaon

TEACHER FEEDBACK ON CURRICULUM

ACADEMIC YEAR -2018-19

Name of the Teacher: *Domuley M.K*

Department: *Economics*

Sr. NO.	PARAMETERS	Excellent	Good	Average	Below Average
1	Applicability of the syllabus to local developmental needs	✓			
2	Difficulty level of the syllabus		✓		
3	Clarity about the course objectives		✓		
4	Weightage given to employability	✓			
5	Depth of the Course Content	✓			
6	Incorporation of latest knowledge & information	✓			
7	Research Possibilities	✓			
8	Mechanism used for development/ revision of curriculum by BoS	✓			
9	Weightage given to learning values like knowledge, skills, analytical abilities, etc.	✓			
10	Relevance of course outcomes	✓			
11	Quality and clarity of textual/ study/ reference material suggested		✓		
12	Overall rating	✓			

Coordinator

Internal Quality Assurance Cell (IQAC)
Sunderrao Solanke Mahavidyalaya,
Majalgaon, Dist. Beed (MS)

Signature

PRINCIPAL

Sunderrao Solanke Mahavidyalaya
Majalgaon Dist. Beed (M.S.)



M.S.P.Mandal's

Sunderrao Solanke Mahavidyalaya Majalgaon

SUBJECT EXPERT FEEDBACK ON CURRICULUM

ACADEMIC YEAR -2018-19

Name of the Subject Expert: *Dr. Kamalkishor Lestda*

Department: *English*

Sr. NO.	PARAMETERS	Excellent	Good	Average	Below Average
1	Applicability of the syllabus to local developmental needs		✓		
2	Difficulty level of the syllabus	✓			
3	Clarity about the course objectives		✓		
4	Weightage given to employability	✓			
5	Depth of the Course Content	✓			
6	Incorporation of latest knowledge & information		✓		
7	Research Possibilities	✓			
8	Mechanism used for development/ revision of curriculum by BoS		✓		
9	Weightage given to learning values like knowledge, skills, analytical abilities, etc.	✓			
10	Relevance of course outcomes		✓		
11	Quality and clarity of textual/ study/ reference material suggested	✓			
12	Overall rating		✓		

Coordinator

Internal Quality Assurance Cell (IQAC)
Sunderrao Solanke Mahavidyalaya,
Majalgaon, Dist. Beed (MS)

Signature

PRINCIPAL

Sunderrao Solanke Mahavidyalaya
Majalgaon Dist. Beed (M.S.)



M.S.P.Mandal's

Sunderrao Solanke Mahavidyalaya Majalgaon

ALUMNI FEEDBACK ON CURRICULUM

ACADEMIC YEAR -2018-19

Name of the Alumni: *Suresh Prasad*

Sr. NO.	PARAMETERS	Excellent	Good	Average	Below Average
1	Fulfillment of my learning needs	✓			
2	Applicability of the curriculum to real life situations		✓		
3	Clarity about the course objectives		✓		
4	Weightage given to employability	✓			
5	Weightage given to skill development		✓		
6	Weightage given to entrepreneurship		✓		
7	Difficulty level of the course content	✓			
8	Promotion of independent thinking by Curriculum		✓		
9	Usefulness of the curriculum at workplace	✓			
10	Usefulness of the curriculum in my higher education		✓		
11	Fulfillment of learning objectives	✓			
12	Overall rating		✓		

Punej
Signature

[Signature]
Coordinator

Internal Quality Assurance Cell (IQAC)
Sunderrao Solanke Mahavidyalaya,
Majalgaon, Dist. Beed (MS)

[Signature]
PRINCIPAL
Sunderrao Solanke Mahavidyalaya
Majalgaon Dist. Beed (M.S.)