



Marathwada Shikshan Prasarak Mandal's

Sunderrao Solanke Mahavidyalaya, Majalgaon



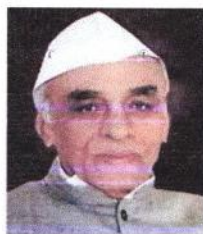
INTERNAL QUALITY ASSURANCE CELL

Criterion 1- Curricular Aspects

1.4 Feedback System

1.4.1 Institution obtains feedback on the academic performance and ambience of the institution from various stakeholders, such as Students, Teachers, Employers, Alumni etc. and action taken report on the feedback is made available on institutional website (Yes or No).

Feedback 2017-2018



M.S.P.Mandal's

SUNDERRAO SOLANKE MAHAVIDYALAYA

MAJALGAON, DIST. BEED (MH)-431131

NAAC Re-Accredited "A" Grade

Feedback Analysis

A REPORT ON FEEDBACK FROM STUDENTS ON SYLLABUS

ACADEMIC YEAR 2017 – 2018

Feedback on Syllabus collected from Students for the academic year 2017-2018 on various important aspects which include:

- 1 Depth of the course content including project work if any
- 2 Application of coverage of Course
- 3 Applicability/relevance to real life situations
Learning value (in term of knowledge, concept, manual skill analytical ability and broadening perspectives)
- 4 broadening perspectives)
- 5 Clarity and relevance of textual reading material
- 6 Relevance of additional source material (Library)
- 7 Extend of effort required by Students
- 8 Overall Rating

25 Students participated in the survey consisting of 8 aspects/questions on the Syllabus.



M.S.P.Mandal's
SUNDERRAO SOLANKE MAHAVIDYALAYA

MAJALGAON, DIST.BEED (MH)-431131

NAAC Re-Accredited "A" Grade

Feedback Analysis

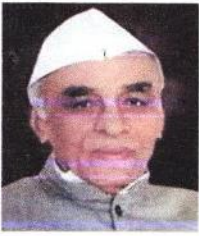
M.S.P.Mandal's

Sunderrao Solanke Mahavidyalaya Majalgaon

STUDENT FEEDBACK ON SYLLABUS

ACADEMIC YEAR -2017-18

Sr. No.	Parameters	A Excellent%	B Good%	C Satisfactory%	D Unsatisfactory%
1.	Depth of the course content including project work if any	50.14	47.24	2.62	00
2.	Application of coverage of Course	80.26	14.36	5.38	00
3.	Applicability/relevance to real life situations	49.52	44.37	6.11	00
4.	Learning value (in term of knowledge, concept, manual skill analytical ability and broadening perspectives)	62.42	22.32	15.26	00
5.	Clarity and relevance of textual reading material	38.16	56.19	5.65	00
6.	Relevance of additional source material (Library)	62.14	18.36	19.5	00
7.	Extend of effort required by Students	67.14	17.39	15.47	00
8.	Overall Rating	58.54	31.46	9.99	00



M.S.P.Mandal's
SUNDERRAO SOLANKE MAHAVIDYALAYA

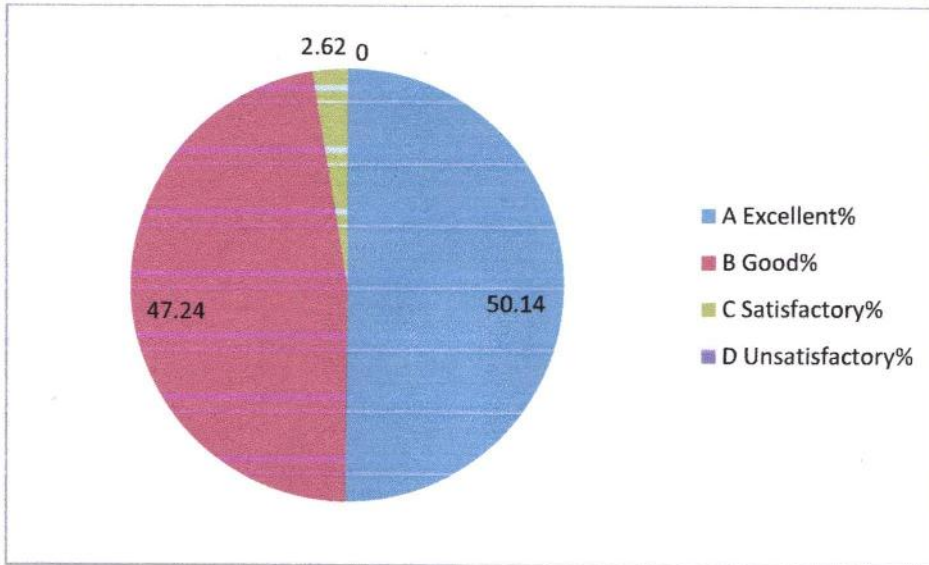
MAJALGAON, DIST.BEED (MH)-431131

NAAC Re-Accredited "A" Grade

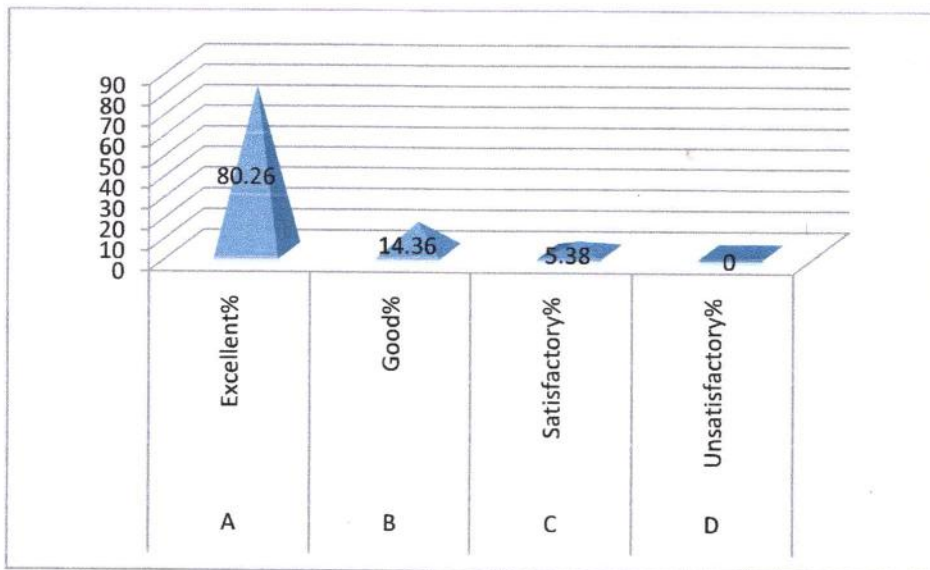


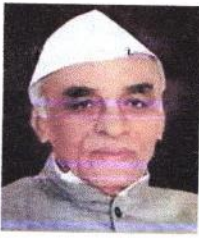
Feedback Analysis

1. Depth of the course content including project work if any



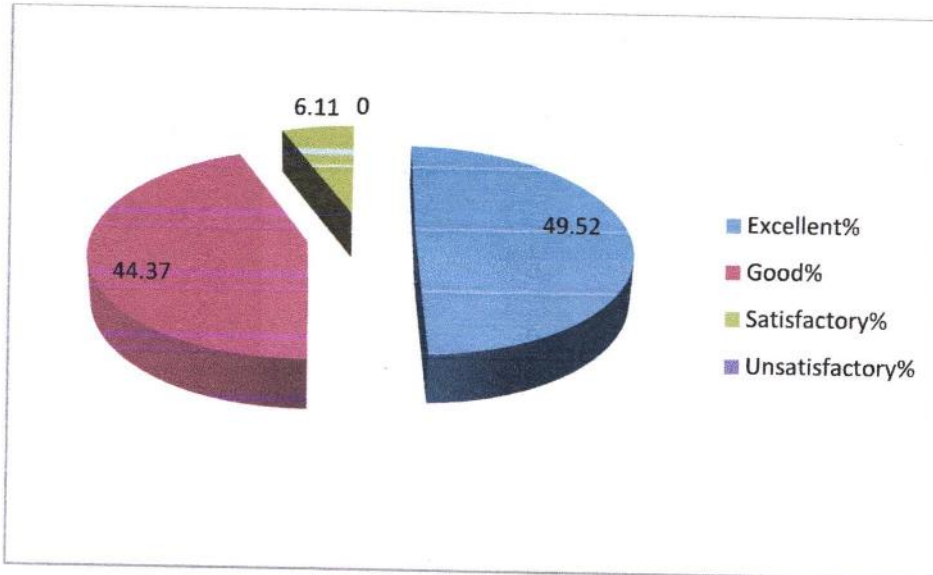
2. Application of coverage of Course



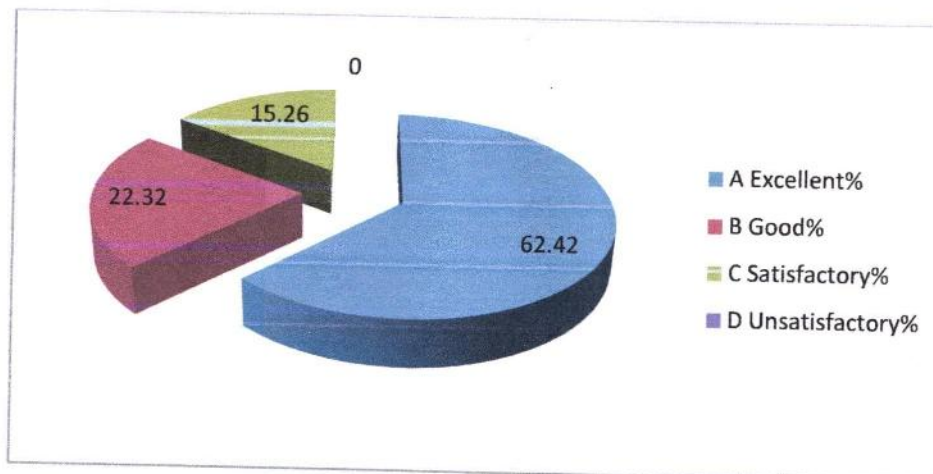


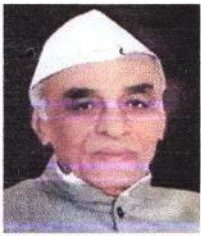
Feedback Analysis

3. Applicability/relevance to real life situations



4. Learning value (in term of knowledge, concept, manual skill analytical ability and broadening perspectives)





M.S.P.Mandal's
SUNDERRAO SOLANKE MAHAVIDYALAYA

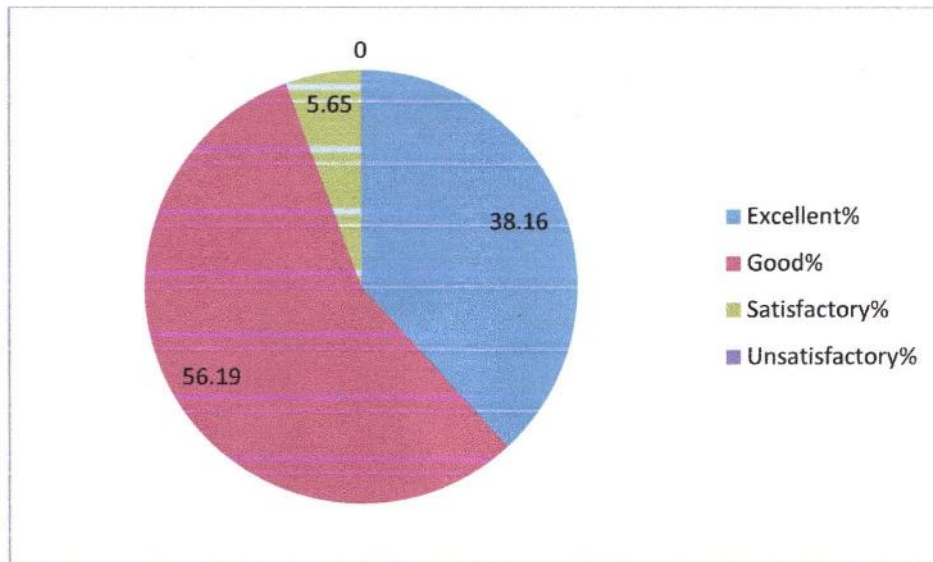
MAJALGAON, DIST.BEED (MH)-431131

NAAC Re-Accredited "A" Grade

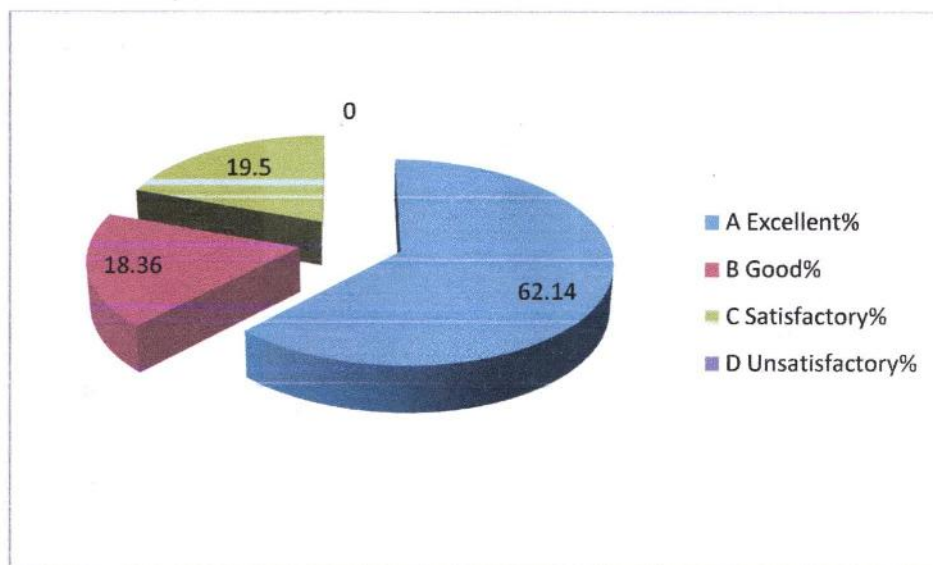


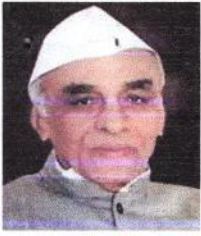
Feedback Analysis

5. Clarity and relevance of textual reading material



6. Relevance of additional source material (Library)





M.S.P.Mandal's
SUNDERRAO SOLANKE MAHAVIDYALAYA

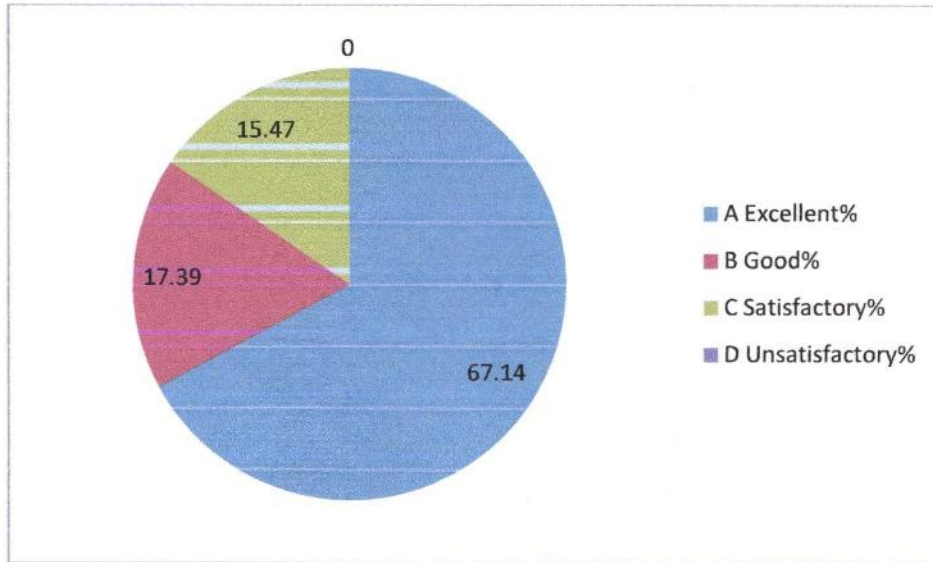
MAJALGAON, DIST.BEED (MH)-431131

NAAC Re-Accredited "A" Grade

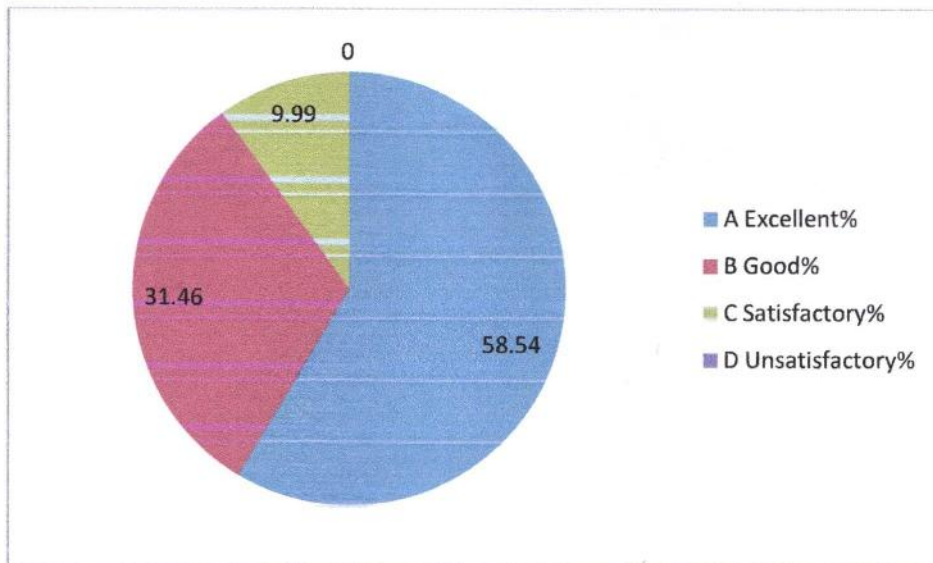


Feedback Analysis

7. Extend of effort required by Students



8. Overall Rating





M.S.P.Mandal's
SUNDERRAO SOLANKE MAHAVIDYALAYA

MAJALGAON, DIST.BEED (MH)-431131

NAAC Re-Accredited "A" Grade



Feedback Analysis

Respondent details

Responses: 25

1. Depth of the course content including project work if any

It is found that the maximum (13) of student's respondent opined that Depth of the course content including project work if any found excellent, 12 think as good, 1 replied as it is satisfactory.

2. Application of coverage of Course

The highest (20) respondents from the total students noted that the Application of coverage of Course Is excellent; followed by 4 remarked as good, 1 thinks it is satisfactory.

3. Applicability/relevance to real life situations

From the total 25 respondents, majority (12) of student respondents opined that Applicability/relevance to real life situations is excellent, 11 opined it is good, 2 rated it is satisfactory.

4. Learning value (in term of knowledge, concept, manual skill analytical ability and broadening perspectives)

From the total 25 respondents, majority (16) of student respondents Learning value (in term of knowledge, concept, manual skill analytical ability and broadening perspectives) are excellent, 4 opined it is good, 4 rated it is satisfactory.

5. Clarity and relevance of textual reading material

It is found that the highest (10) number of respondents opined that Clarity and relevance of textual reading material are excellent, 14 thinks in this case as good, 1 opined as satisfactory.

6. Relevance of additional source material (Library)

The collected information indicate that the maximum number of respondents (16) found the Relevance of additional source material (Library) is excellent, followed by 5 says it is good, 5 opined as it is satisfactory.

7. Extend of effort required by Students

From the total 25 respondents, highest (17) of the respondents opined that Extend of effort required by Students found excellent. 4 think as good, 4 opined as it is satisfactory.

8. Overall Rating

It is found that the highest (15) number of respondents opined that Overall Rating are excellent. 8 thinks in this case as good, 2 opined as satisfactory.


Coordinator
Internal Quality Assurance Cell (IQAC)
Sunderrao Solanke Mahavidyalaya,
Majalgaon, Dist. Beed (MS)




PRINCIPAL
Sunderrao Solanke Mahavidyalaya
Majalgaon Dist. Beed (M. S.)



M.S.P.Mandal's

Sunderrao Solanke Mahavidyalaya Majalgaon

STUDENT FEEDBACK ON CURRICULUM

ACADEMIC YEAR -2017-18

Name of Student: Gaikwad Nishal

Class: B.Com 5th Y

Department: commerce

Sr. NO	PARAMETERS	Excellent	Good	Average	Below Average
1	Fulfillment of my learning needs	✓			
2	Applicability of the curriculum to real life situations	✓			
3	Clarity about the course objectives	✓			
4	Weightage given to employability		✓		
5	Weightage given to skill development	✓			
6	Structure of the syllabus	✓			
7	Difficulty level of the course content	✓			
8	Promotion of independent thinking by curriculum	✓			
9	Exposure to new knowledge and practices	✓			
10	Weightage to practical /field work		✓		
11	Creation of interest to pursue higher education	✓			
12	Overall Rating	✓			


Coordinator

Internal Quality Assurance Cell (IQAC)
Sunderrao Solanke Mahavidyalaya,
Majalgaon, Dist. Beed (MS)


Signature


PRINCIPAL

Sunderrao Solanke Mahavidyalaya
Majalgaon Dist. Beed (M.S.)